



REGISTERED SURVEYOR'S CERTIFICATION

I, Veris Australia Pty Ltd, hereby certify that the vertical and horizontal locations and dimensions shown on this plan are a true and correct record and were located by survey.

6448
 Old Registered Surveyor (sig.) Old Reg. Surveyor No. Date

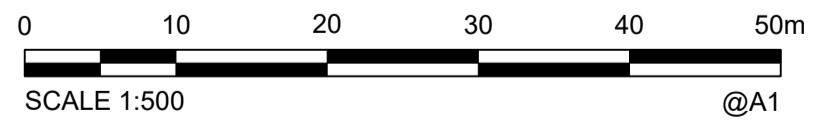
ENGINEER'S CERTIFICATION

I, _____, hereby certify that:

- The information contained in this drawing / document is in compliance with approved drawings and design.
- The new water and sewerage works defined by this drawing have been designed and constructed in accordance with the SEQ Code.
- This represents an accurate record of as-constructed works.
- I accept responsibility for the information contained in this drawing / document.

RPEQ (signature) RPEQ No. Date:

- LEGEND**
- NEW HYDRANT
 - NEW SLUICE VALVE
 - NEW TEE
 - NEW END CAP
 - NEW TAPER
 - NEW WATER SERVICE CONDUIT (Ø100 PVC-O PN16)
 - NEW WATER SERVICE (Ø25 PE PN16)
 - NEW WATER METER
 - NEW WATER HOUSE CONNECTION (TAPPING BAND)
 - NEW WATER MAIN (Ø180 PE-100 PN16)
 - WATER MARKER
 - EXISTING WATER MAIN & FITTINGS
 - ① Ø180 90° BEND
 - ② Ø180 Fire Hydrant
 - ③ Ø180 Stop Valve
 - ④ Ø180 x Ø180 Tee
 - ⑤ Ø180 Dead End Cap
 - ⑥ Ø180 Duck Foot Fire Hydrant
 - ⑦ Ø180 Temporary Fire Hydrant to be removed at live connection



A1	C	18/09/2025	EXISTING WATER INFRASTRUCTURE COLOURED PINK	JMc		DRAWN	AD	29/04/2025
	B	20/06/2025	FINAL	JMc		CHECKED		
	A	29/04/2025	PROGRESS PLOT AS CON WATER	AD		APPROVED		
	REV NO	DATE	REVISION PURPOSE / DESCRIPTION	DRAWN	RPEQ	RPEQ No	INITIALS	DATE

veris

BRISBANE (07) 3666 4700 WHITSUNDAYS (07) 4945 6600
 MACKAY (07) 4957 9700 CAIRNS (07) 4052 9400

veris.com.au
 ACN 615 735 727
 Veris Australia Pty Ltd



DAWN WALLOON
 Banjo Drive Walloon

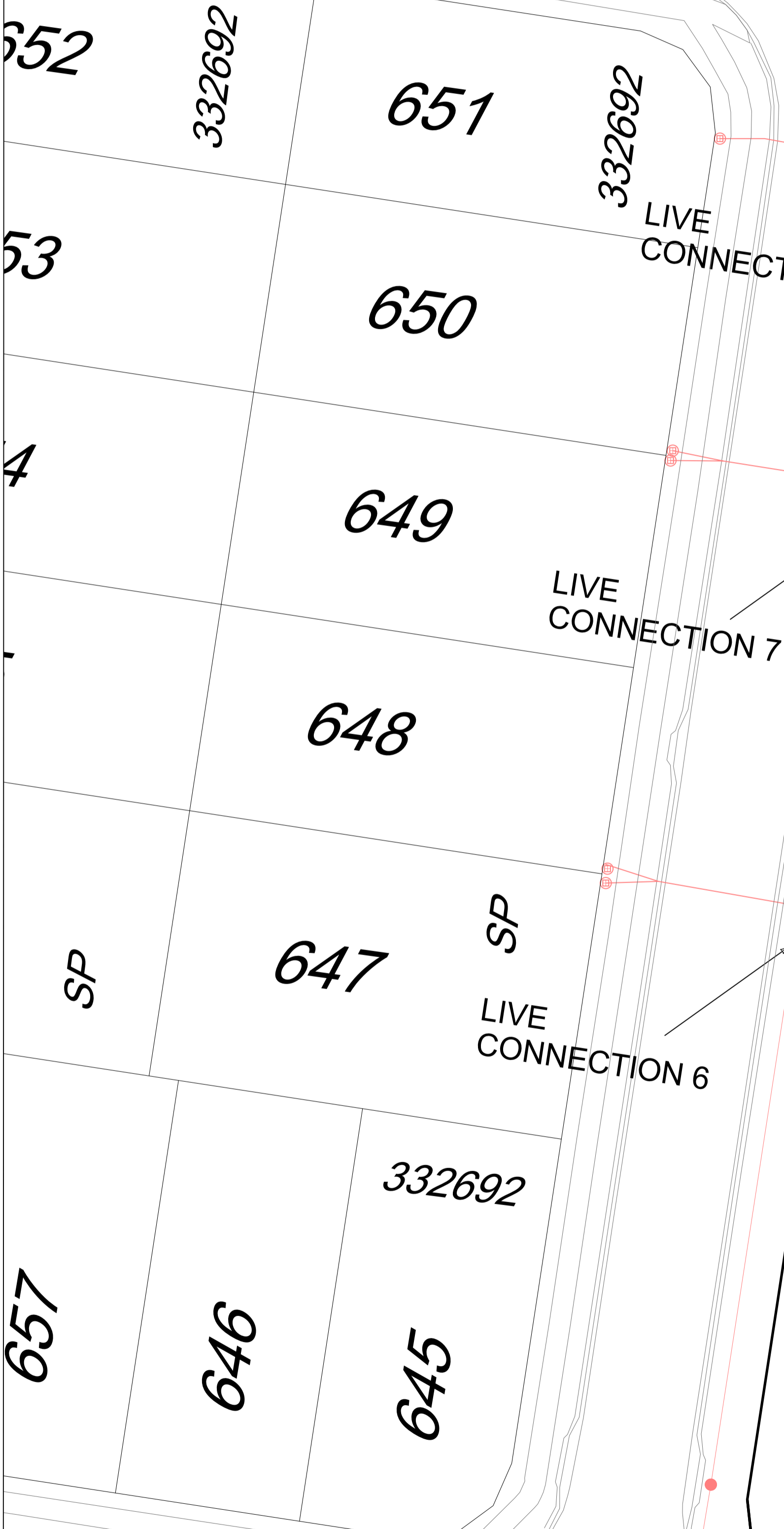
STAGE 6J
 AS CONSTRUCTED WATER

DRAWING STATUS AS CONSTRUCTED	
SHEET 1 OF 3 SHEETS	
DRAWING NO. 401905-6J-AW01-C	REV. C



LIVE CONNECTION 2 14

HEWETT STREET



REGISTERED SURVEYOR'S CERTIFICATION

I, Veris Australia Pty. Ltd., hereby certify that the vertical and horizontal locations and dimensions shown on this plan are a true and correct record and were located by survey.

Old Registered Surveyor (sig.) 6448 Old Reg. Surveyor No. Date

ENGINEER'S CERTIFICATION

I, _____, hereby certify that:

- The information contained in this drawing / document is in compliance with approved drawings and design.
- The new water and sewerage works defined by this drawing have been designed and constructed in accordance with the SEQ Code.
- This represents an accurate record of as-constructed works.
- I accept responsibility for the information contained in this drawing / document.

RPEQ (signature) RPEQ No. Date:

LEGEND

- NEW HYDRANT
 - NEW SLUICE VALVE
 - NEW TEE
 - NEW END CAP
 - NEW TAPER
 - NEW WATER SERVICE CONDUIT (Ø100 PVC-O PN16)
 - NEW WATER SERVICE (Ø25 PE PN16)
 - NEW WATER METER
 - NEW WATER HOUSE CONNECTION (TAPPING BAND)
 - NEW WATER MAIN (Ø180 PE-100 PN16)
 - WATER MARKER
 - EXISTING WATER MAIN & FITTINGS
- ① Ø180 90° BEND
 - ② Ø180 Fire Hydrant
 - ③ Ø180 Stop Valve
 - ④ Ø180 x Ø180 Tee
 - ⑤ Ø180 Dead End Cap
 - ⑥ Ø180 Duck Foot Fire Hydrant
 - ⑦ Ø180 Temporary Fire Hydrant to be removed at live connection



SCALE OF METRES
1 : 250 FULL SIZE A1 SHEET

A1	C	18/09/2025	EXISTING WATER INFRASTRUCTURE COLOURED PINK	JMc	DRAWN	AD	29/04/2025
	B	20/06/2025	FINAL	JMc	CHECKED		
	A	29/04/2025	PROGRESS PLOT AS CON WATER	AD	APPROVED		
	REV NO	DATE	REVISION PURPOSE / DESCRIPTION	DRAWN	RPEQ	RPEQ No	INITIALS

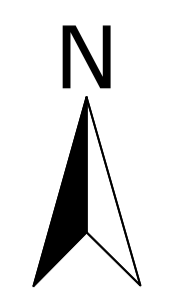
veris

BRISBANE (07) 3666 4700 WHITSUNDAYS (07) 4945 6600
 MACKAY (07) 4957 9700 CAIRNS (07) 4052 9400
 veris.com.au
 ACN 615 735 727
 Veris Australia Pty Ltd



DAWN WALLOON
 Banjo Drive Walloon
 STAGE 6J
 AS CONSTRUCTED WATER

DRAWING STATUS AS CONSTRUCTED	
SHEET 2 OF 3 SHEETS	
DRAWING NO. 401905-6J-AW01-C	REV. C



REGISTERED SURVEYOR'S CERTIFICATION

I, Veris Australia Pty Ltd, hereby certify that the vertical and horizontal locations and dimensions shown on this plan are a true and correct record and were located by survey.

6448
 Old Registered Surveyor (sig.) Old Reg. Surveyor No. Date

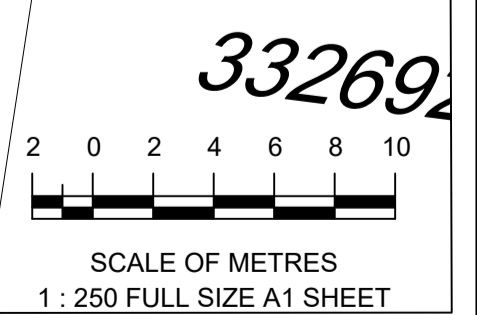
ENGINEER'S CERTIFICATION

I, _____, hereby certify that:

- The information contained in this drawing / document is in compliance with approved drawings and design.
- The new water and sewerage works defined by this drawing have been designed and constructed in accordance with the SEQ Code.
- This represents an accurate record of as-constructed works.
- I accept responsibility for the information contained in this drawing / document.

RPEQ (signature) RPEQ No. Date:

- LEGEND**
- NEW HYDRANT
 - NEW SLUICE VALVE
 - NEW TEE
 - NEW END CAP
 - NEW TAPER
 - NEW WATER SERVICE CONDUIT (Ø100 PVC-O PN16)
 - NEW WATER SERVICE (Ø25 PE PN16)
 - NEW WATER METER
 - NEW WATER HOUSE CONNECTION (TAPPING BAND)
 - NEW WATER MAIN (Ø180 PE-100 PN16)
 - WATER MARKER
 - EXISTING WATER MAIN & FITTINGS
- ① Ø180 90° BEND
 - ② Ø180 Fire Hydrant
 - ③ Ø180 Stop Valve
 - ④ Ø180 x Ø180 Tee
 - ⑤ Ø180 Dead End Cap
 - ⑥ Ø180 Duck Foot Fire Hydrant
 - ⑦ Ø180 Temporary Fire Hydrant to be removed at live connection



A1	C	18/09/2025	EXISTING WATER INFRASTRUSTURE COLOURED PINK	JMc		DRAWN	AD	29/04/2025
	B	20/06/2025	FINAL	JMc		CHECKED		
	A	29/04/2025	PROGRESS PLOT AS CON WATER	AD		APPROVED		
	REV NO	DATE	REVISION PURPOSE / DESCRIPTION	DRAWN	RPEQ	RPEQ No	INITIALS	DATE

veris

BRISBANE (07) 3666 4700 WHITSUNDAYS (07) 4945 6600
 MACKAY (07) 4957 9700 CAIRNS (07) 4052 9400
 veris.com.au
 ACN 615 735 727
 Veris Australia Pty Ltd



DAWN WALLOON
 Banjo Drive Walloon

STAGE 6J
 AS CONSTRUCTED WATER

DRAWING STATUS
 AS CONSTRUCTED

SHEET 2 OF 3 SHEETS

DRAWING NO. 401905-6J-AW01-C REV. C