

ADDITIONAL NOTES:

The LOT dimensions and area shown hereon are subject to final field survey and also to the requirements of Council and any other authority which may have requirements under any relevant legislation

Final surface contours & retaining walls shown hereon have been supplied by Egis Engineers.

Compaction of any fill material placed on this site shall be completed to level one inspection and testing services in accordance with AS3798-2007.

Depth of fill values are calculated to the lower of the pre-development surface and the ground surface from Survey.

Copyright © Veris Australia Pty Ltd April 2024.

Dawn
Walloon - Stage 6D
For
ID_Land

IMPORTANT NOTES:
(These notes are an integral part of this plan)

This plan has been prepared for ID_LAND for the purposes of A Disclosure Plan Under the Land Sales Act 1984 (as amended).

It is not to be used by any other person or corporation or for any other purposes and is subject to the following limitations:

Please refer to the approved Development Application for conditions relating to the LOT and to approved Operational Works drawings for services location and possible easements.

THESE DESIGNS AND DRAWINGS ARE COPYRIGHT AND ARE NOT TO BE USED OR REPRODUCED WITHOUT THE WRITTEN PERMISSION OF VERIS

Data Sources

Cadastral Boundaries	401905-LC01-(Z).dwg
Engineering Design	5721_2023_OW.pdf
Final Surface Contours	23-000032-6D-6F-design tin.12daz
Pre-development Surface	401184-DS01 A

Issue	Revisions	Date	KL/RCS	Drawn
A	Original	10.04.2024	KL/RCS	

Locality:	Walloon
Local Authority:	Ipswich City Council
Horizontal Meridian:	MGA Zone 56
Vertical Level Datum:	AHD
Scale:	1:250 @ A4
Designed:	EGIS ENGINEERS
Drawn:	KL 05/04/2024
Checked:	MJC 18/4/2024
Plot Date:	01 May, 2024
Computer File Ref: 401905-ST6D-DP(A).dwg	

DISCLOSURE PLAN
of Proposed LOT 475
being part of
Lot 4
on SP336196



veris

BRISBANE (07) 3686 4700 WHITSUNDAYS (07) 4945 6600

MACKAY (07) 4957 9700 CAIRNS (07) 4252 9400

veris.com.au
ACN 615 735 727
Veris Australia Pty Ltd

Drawing No 401905-DP 475 Issue A

LEGEND

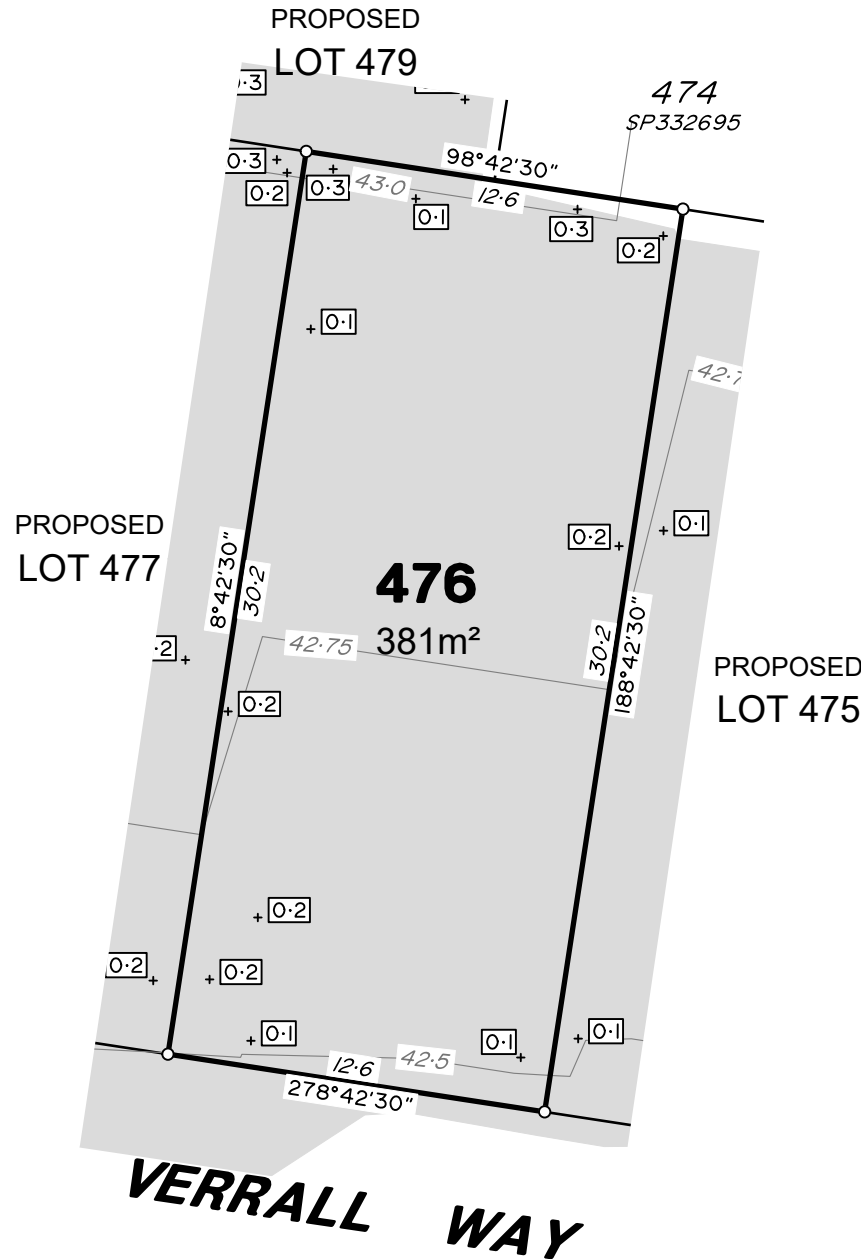
Final surface contours based on A.H.D. datum at an interval of 0.25m, shown as: — 15.5 —

Where applicable, areas to be filled are shown as:

Depth of fill, in metres, shown as: - +0.5

Retaining wall and retaining wall height, shown on the lower side of the wall, have been calculated from digital data supplied by Egis Engineers and shown as:



**ADDITIONAL NOTES:**

The LOT dimensions and area shown hereon are subject to final field survey and also to the requirements of Council and any other authority which may have requirements under any relevant legislation

Final surface contours & retaining walls shown hereon have been supplied by Egis Engineers.

Compaction of any fill material placed on this site shall be completed to level one inspection and testing services in accordance with AS3798-2007.

Depth of fill values are calculated to the lower of the pre-development surface and the ground surface from Survey.

Copyright © Veris Australia Pty Ltd April 2024.

Dawn
Walloon - Stage 6D
For
ID_Land

IMPORTANT NOTES:
(These notes are an integral part of this plan)

This plan has been prepared for ID_LAND for the purposes of A Disclosure Plan Under the Land Sales Act 1984 (as amended).

It is not to be used by any other person or corporation or for any other purposes and is subject to the following limitations:

Please refer to the approved Development Application for conditions relating to the LOT and to approved Operational Works drawings for services location and possible easements.

THESE DESIGNS AND DRAWINGS ARE COPYRIGHT AND ARE NOT TO BE USED OR REPRODUCED WITHOUT THE WRITTEN PERMISSION OF VERIS

Data Sources	
Cadastral Boundaries	401905-LC01-(Z).dwg
Engineering Design	5721_2023_OW.pdf
Final Surface Contours	23-000032-6D-6F-design tin.12daz
Pre-development Surface	401184-DS01 A

Issue	Revisions	Date	KL/RCS	Drawn
A	Original	10.04.2024	KL/RCS	

Locality:	Walloon
Local Authority:	Ipswich City Council
Horizontal Meridian:	MGA Zone 56
Vertical Level Datum:	AHD
Scale:	1:250 @ A4
Designed:	EGIS ENGINEERS
Drawn:	KL 05/04/2024
Checked:	MJC 18/4/2024
Plot Date:	01 May, 2024
Computer File Ref: 401905-ST6D-DP(A).dwg	

DISCLOSURE PLAN
of Proposed LOT 476
being part of
Lot 4
on SP336196



veris

BRISBANE (07) 3686 4700 WHITSUNDAYS (07) 4945 6600

MACKAY (07) 4957 9700 CAIRNS (07) 4252 9400

veris.com.au
ACN 615 735 727
Veris Australia Pty Ltd

Drawing No 401905-DP 476 Issue A

LEGEND

Final surface contours based on A.H.D. datum at an interval of 0.25m, shown as: — 15.5 —

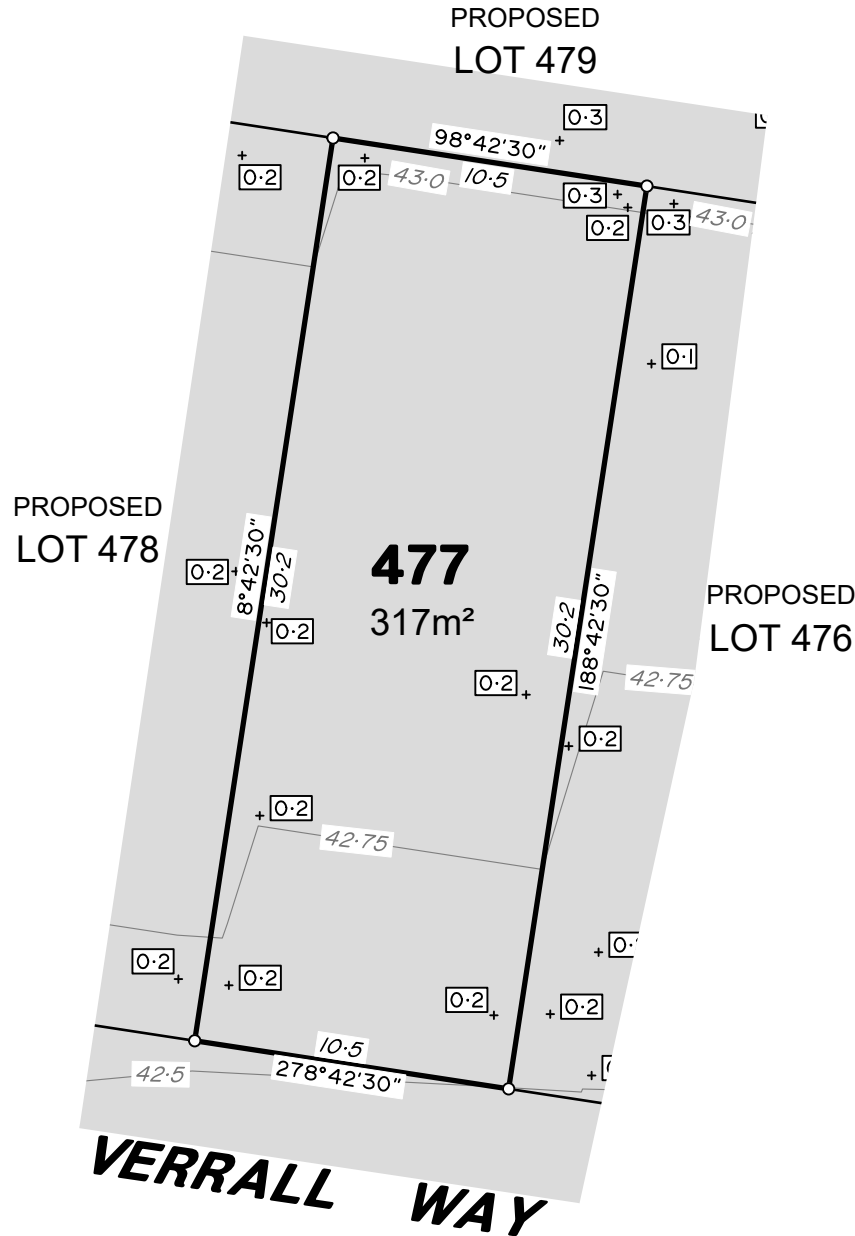
Where applicable, areas to be filled are shown as:

Depth of fill, in metres, shown as: - +0.5

Retaining wall and retaining wall height, shown on the lower side of the wall, have been calculated from digital data supplied by Egis Engineers and shown as:

(1.2)



**ADDITIONAL NOTES:**

The LOT dimensions and area shown hereon are subject to final field survey and also to the requirements of Council and any other authority which may have requirements under any relevant legislation

Final surface contours & retaining walls shown hereon have been supplied by Egis Engineers.

Compaction of any fill material placed on this site shall be completed to level one inspection and testing services in accordance with AS3798-2007.

Depth of fill values are calculated to the lower of the pre-development surface and the ground surface from Survey.

Copyright © Veris Australia Pty Ltd April 2024.

Dawn
Walloon - Stage 6D
For
ID_Land

IMPORTANT NOTES:
(These notes are an integral part of this plan)

This plan has been prepared for ID_LAND for the purposes of A Disclosure Plan Under the Land Sales Act 1984 (as amended).

It is not to be used by any other person or corporation or for any other purposes and is subject to the following limitations:

Please refer to the approved Development Application for conditions relating to the LOT and to approved Operational Works drawings for services location and possible easements.

THESE DESIGNS AND DRAWINGS ARE COPYRIGHT AND ARE NOT TO BE USED OR REPRODUCED WITHOUT THE WRITTEN PERMISSION OF VERIS

Data Sources
Cadastral Boundaries 401905-LC01-(Z).dwg
Engineering Design 5721_2023_OW.pdf
Final Surface Contours 23-000032-6D-6F-design tin.12daz
Pre-development Surface 401184-DS01 A

Issue	Revisions	Date	KL/RCS	Drawn
A	Original	10.04.2024	KL/RCS	

Locality: Walloon
Local Authority: Ipswich City Council
Horizontal Meridian: MGA Zone 56
Vertical Level Datum: AHD
Scale: 1:250 @ A4
Designed: EGIS ENGINEERS
Drawn: KL 05/04/2024
Checked: MJC 18/4/2024
Plot Date: 01 May, 2024
Computer File Ref: 401905-ST6D-DP(A).dwg

DISCLOSURE PLAN
of Proposed LOT 477
being part of
Lot 4
on SP336196



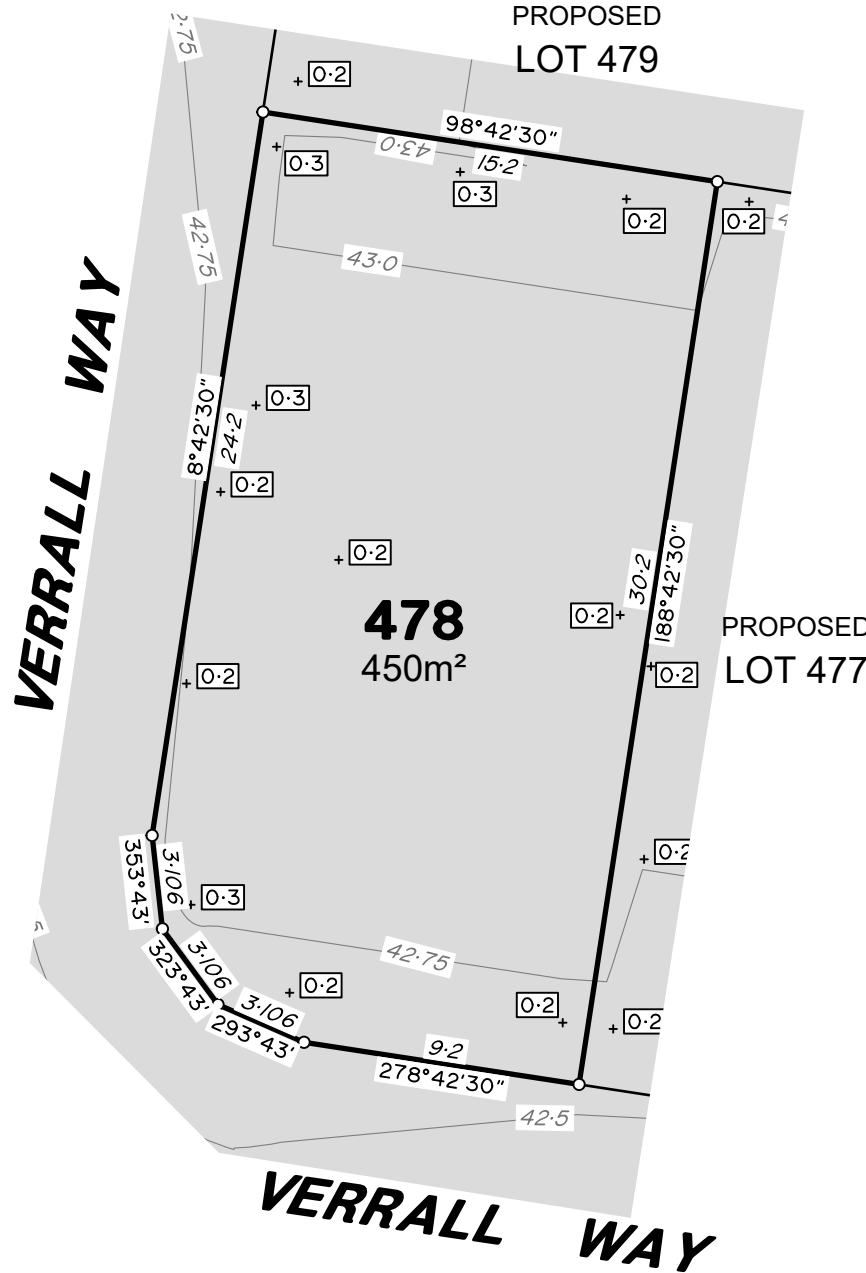
veris

BRISBANE (07) 3686 4700 WHITSUNDAYS (07) 4945 6600

MACKAY (07) 4957 9700 CAIRNS (07) 4252 9400

veris.com.au
ACN 615 735 727
Veris Australia Pty Ltd

Drawing No 401905-DP 477 Issue A

**ADDITIONAL NOTES:**

The LOT dimensions and area shown hereon are subject to final field survey and also to the requirements of Council and any other authority which may have requirements under any relevant legislation

Final surface contours & retaining walls shown hereon have been supplied by Egis Engineers.

Compaction of any fill material placed on this site shall be completed to level one inspection and testing services in accordance with AS3798-2007.

Depth of fill values are calculated to the lower of the pre-development surface and the ground surface from Survey.

Copyright © Veris Australia Pty Ltd April 2024.

Dawn
Walloon - Stage 6D
For
ID_Land

IMPORTANT NOTES:
(These notes are an integral part of this plan)

This plan has been prepared for ID_LAND for the purposes of A Disclosure Plan Under the Land Sales Act 1984 (as amended).

It is not to be used by any other person or corporation or for any other purposes and is subject to the following limitations:

Please refer to the approved Development Application for conditions relating to the LOT and to approved Operational Works drawings for services location and possible easements.

THESE DESIGNS AND DRAWINGS ARE COPYRIGHT AND ARE NOT TO BE USED OR REPRODUCED WITHOUT THE WRITTEN PERMISSION OF VERIS

Data Sources	
Cadastral Boundaries	401905-LC01-(Z).dwg
Engineering Design	5721_2023_OW.pdf
Final Surface Contours	23-000032-6D-6F-design tin.12daz
Pre-development Surface	401184-DS01 A

Issue	Revisions	Date	Drawn
A	Original	10.04.2024	KL/RCS

Locality:	Walloon
Local Authority:	Ipswich City Council
Horizontal Meridian:	MGA Zone 56
Vertical Level Datum:	AHD
Scale:	1:250 @ A4
Designed:	EGIS ENGINEERS
Drawn:	KL 05/04/2024
Checked:	MJC 18/4/2024
Plot Date:	01 May, 2024
Computer File Ref: 401905-ST6D-DP(A).dwg	

DISCLOSURE PLAN
of Proposed LOT 478
being part of
Lot 4
on SP336196



veris

BRISBANE (07) 3686 4700 WHITSUNDAYS (07) 4945 6600

MACKAY (07) 4957 9700 CAIRNS (07) 4252 9400

veris.com.au
ACN 615 735 727
Veris Australia Pty Ltd

Drawing No 401905-DP 478 Issue A

LEGEND

Final surface contours based on A.H.D. datum at an interval of 0.25m, shown as: — 15.5 —

Where applicable, areas to be filled are shown as:

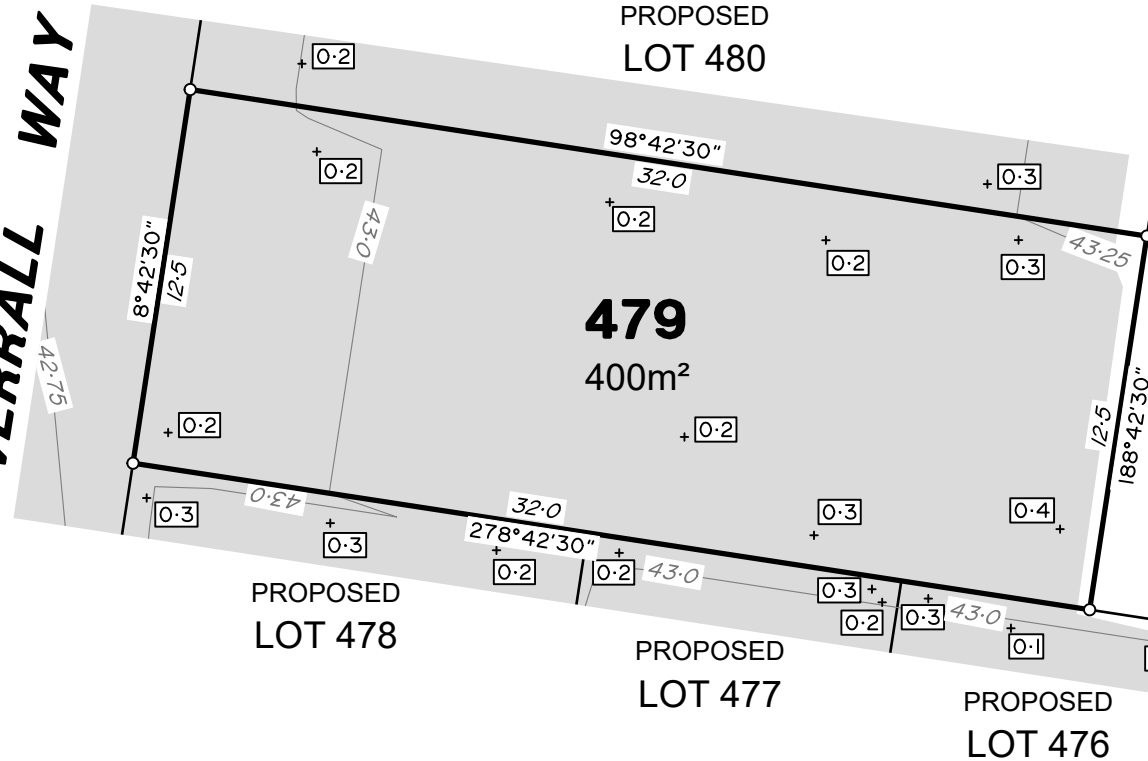
Depth of fill, in metres, shown as: - +0.5

Retaining wall and retaining wall height, shown on the lower side of the wall, have been calculated from digital data supplied by Egis Engineers and shown as:

(1.2)



VERRALL WAY



ADDITIONAL NOTES:

The LOT dimensions and area shown hereon are subject to final field survey and also to the requirements of Council and any other authority which may have requirements under any relevant legislation

Final surface contours & retaining walls shown hereon have been supplied by Egis Engineers.

Compaction of any fill material placed on this site shall be completed to level one inspection and testing services in accordance with AS3798-2007.

Depth of fill values are calculated to the lower of the pre-development surface and the ground surface from Survey.

Copyright © Veris Australia Pty Ltd April 2024.

Dawn
Walloon - Stage 6D
For
ID_Land

IMPORTANT NOTES:
(These notes are an integral part of this plan)

This plan has been prepared for ID_LAND for the purposes of A Disclosure Plan Under the Land Sales Act 1984 (as amended).

It is not to be used by any other person or corporation or for any other purposes and is subject to the following limitations:

Please refer to the approved Development Application for conditions relating to the LOT and to approved Operational Works drawings for services location and possible easements.

THESE DESIGNS AND DRAWINGS ARE COPYRIGHT AND ARE NOT TO BE USED OR REPRODUCED WITHOUT THE WRITTEN PERMISSION OF VERIS

Data Sources	
Cadastral Boundaries	401905-LC01-(Z).dwg
Engineering Design	5721_2023_OW.pdf
Final Surface Contours	23-000032-6D-6F-design tin.12daz
Pre-development Surface	401184-DS01 A

Issue	Revisions	Date	KL/RCS	Drawn
A	Original	10.04.2024	KL/RCS	

Locality:	Walloon
Local Authority:	Ipswich City Council
Horizontal Meridian:	MGA Zone 56
Vertical Level Datum:	AHD
Scale:	1:250 @ A4
Designed:	EGIS ENGINEERS
Drawn:	KL 05/04/2024
Checked:	MJC 18/4/2024
Plot Date:	01 May, 2024
Computer File Ref: 401905-ST6D-DP(A).dwg	

DISCLOSURE PLAN
of Proposed LOT 479
being part of
Lot 4
on SP336196



veris

BRISBANE WHITSUNDAYS
(07) 3686 4700 (07) 4945 6600

MACKAY CAIRNS
(07) 4957 9700 (07) 4252 9400

veris.com.au
ACN 615 735 727
Veris Australia Pty Ltd

Drawing No Issue
401905-DP 479 A

LEGEND

Final surface contours based on A.H.D. datum at an interval of 0.25m, shown as: 15.5

Where applicable, areas to be filled are shown as:

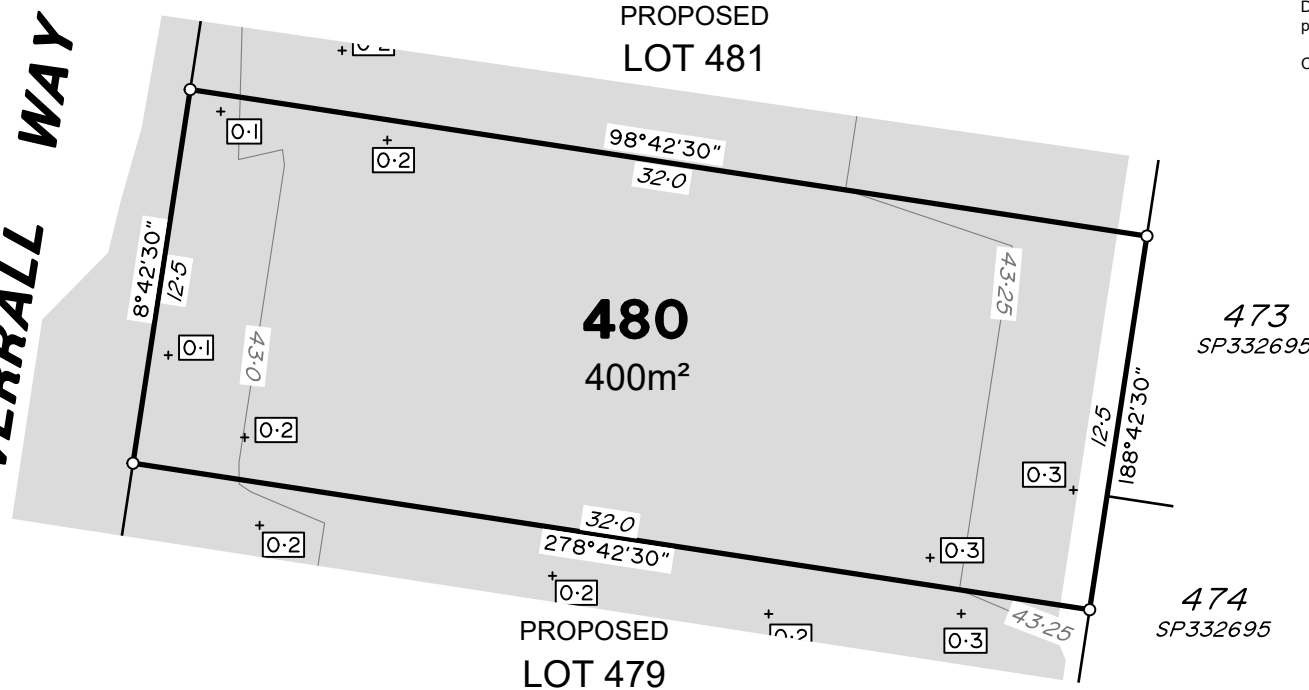
Depth of fill, in metres, shown as: - + 0.5

Retaining wall and retaining wall height, shown on the lower side of the wall, have been calculated from digital data supplied by Egis Engineers and shown as: (1.2)





VERRALL WAY



ADDITIONAL NOTES:

The LOT dimensions and area shown hereon are subject to final field survey and also to the requirements of Council and any other authority which may have requirements under any relevant legislation

Final surface contours & retaining walls shown hereon have been supplied by Egis Engineers.

Compaction of any fill material placed on this site shall be completed to level one inspection and testing services in accordance with AS3798-2007.

Depth of fill values are calculated to the lower of the pre-development surface and the ground surface from Survey.

Copyright © Veris Australia Pty Ltd April 2024.

Dawn
Walloon - Stage 6D
For
ID_Land

IMPORTANT NOTES:
(These notes are an integral part of this plan)

This plan has been prepared for ID_LAND for the purposes of A Disclosure Plan Under the Land Sales Act 1984 (as amended).

It is not to be used by any other person or corporation or for any other purposes and is subject to the following limitations:

Please refer to the approved Development Application for conditions relating to the LOT and to approved Operational Works drawings for services location and possible easements.

THESE DESIGNS AND DRAWINGS ARE COPYRIGHT AND ARE NOT TO BE USED OR REPRODUCED WITHOUT THE WRITTEN PERMISSION OF VERIS

Data Sources	
Cadastral Boundaries	401905-LC01-(Z).dwg
Engineering Design	5721_2023_OW.pdf
Final Surface Contours	23-000032-6D-6F-design.tin.12daz
Pre-development Surface	401184-DS01 A

Issue	Original	Revisions	Date	KL/RCS	Drawn
A			10.04.2024	KL/RCS	

Locality:	Walloon
Local Authority:	Ipswich City Council
Horizontal Meridian:	MGA Zone 56
Vertical Level Datum:	AHD
Scale:	1:250 @ A4
Designed:	EGIS ENGINEERS
Drawn:	KL 05/04/2024
Checked:	MJC 18/4/2024
Plot Date:	01 May, 2024
Computer File Ref:	401905-ST6D-DP(A).dwg

DISCLOSURE PLAN
of Proposed LOT 480
being part of
Lot 4
on SP336196



veris

BRISBANE (07) 3686 4700 WHITSUNDAYS (07) 4945 6600

MACKAY (07) 4957 9700 CAIRNS (07) 4252 9400

veris.com.au
ACN 615 735 727
Veris Australia Pty Ltd

Drawing No 401905-DP 480 Issue A

LEGEND

Final surface contours based on A.H.D. datum at an interval of 0.25m, shown as: — 15.5 —

Where applicable, areas to be filled are shown as:

Depth of fill, in metres, shown as: - +0.5

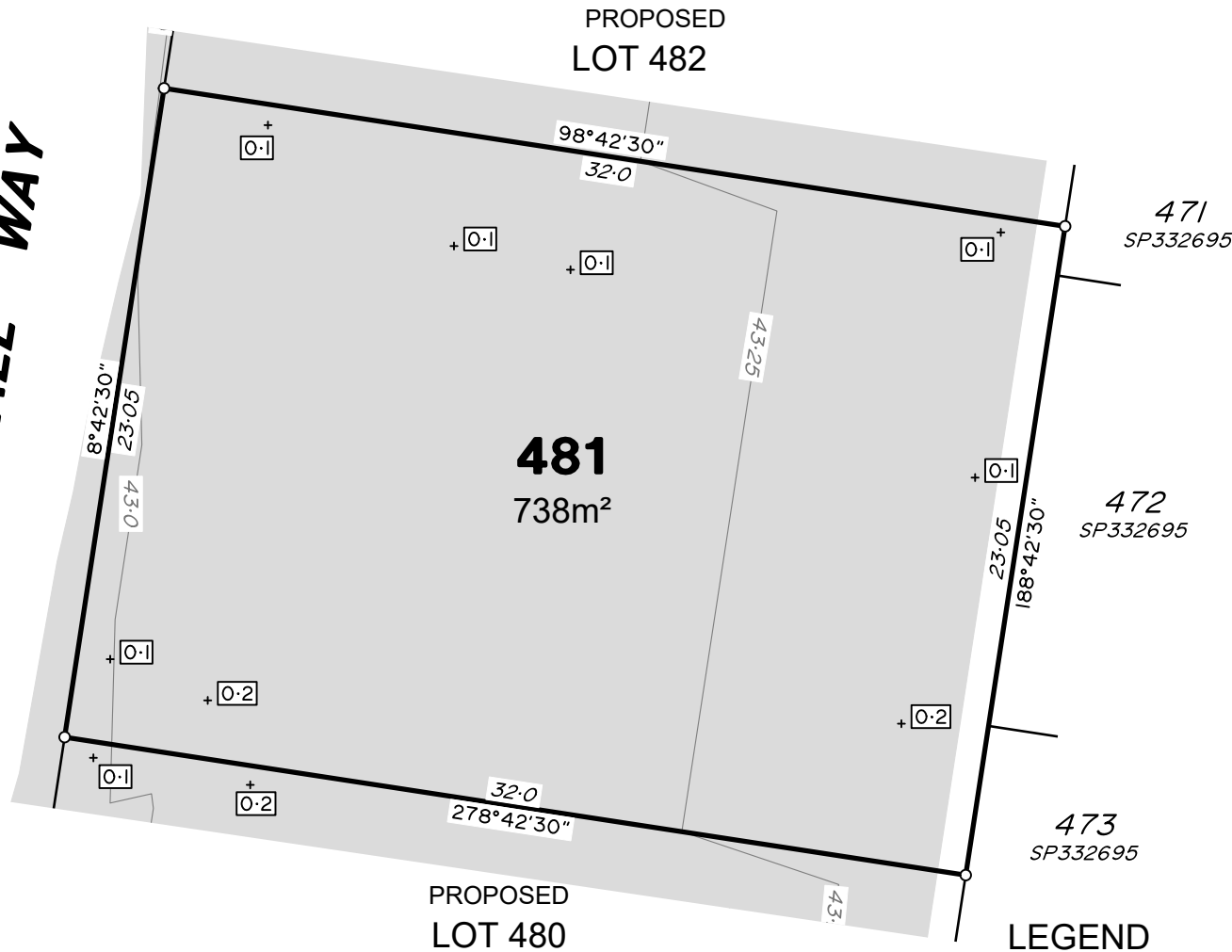
Retaining wall and retaining wall height, shown on the lower side of the wall, have been calculated from digital data supplied by Egis Engineers and shown as:

(1.2)





VERRALL WAY



ADDITIONAL NOTES:

The LOT dimensions and area shown hereon are subject to final field survey and also to the requirements of Council and any other authority which may have requirements under any relevant legislation

Final surface contours & retaining walls shown hereon have been supplied by Egis Engineers.

Compaction of any fill material placed on this site shall be completed to level one inspection and testing services in accordance with AS3798-2007.

Depth of fill values are calculated to the lower of the pre-development surface and the ground surface from Survey.

Copyright © Veris Australia Pty Ltd April 2024.

Dawn
Walloon - Stage 6D
For
ID_Land

IMPORTANT NOTES:
(These notes are an integral part of this plan)

This plan has been prepared for ID_LAND for the purposes of A Disclosure Plan Under the Land Sales Act 1984 (as amended).

It is not to be used by any other person or corporation or for any other purposes and is subject to the following limitations:

Please refer to the approved Development Application for conditions relating to the LOT and to approved Operational Works drawings for services location and possible easements.

THESE DESIGNS AND DRAWINGS ARE COPYRIGHT AND ARE NOT TO BE USED OR REPRODUCED WITHOUT THE WRITTEN PERMISSION OF VERIS

Data Sources			
Cadastral Boundaries	401905-LC01-(Z).dwg		
Engineering Design	5721_2023_OW.pdf		
Final Surface Contours	23-000032-6D-6F-design tin.12daz		
Pre-development Surface	401184-DS01 A		

Issue	Revisions	Date	KL/RCS	Drawn
A	Original	10.04.2024	KL/RCS	

Locality:	Walloon
Local Authority:	Ipswich City Council
Horizontal Meridian:	MGA Zone 56
Vertical Level Datum:	AHD
Scale:	1:250 @ A4
Designed:	EGIS ENGINEERS
Drawn:	KL 05/04/2024
Checked:	MJC 18/4/2024
Plot Date:	01 May, 2024
Computer File Ref: 401905-ST6D-DP(A).dwg	

DISCLOSURE PLAN
of Proposed LOT 481
being part of
Lot 4
on SP336196



veris

BRISBANE (07) 3686 4700 WHITSUNDAYS (07) 4945 6600

MACKAY (07) 4957 9700 CAIRNS (07) 4252 9400

veris.com.au
ACN 615 735 727
Veris Australia Pty Ltd

Drawing No 401905-DP 481 Issue A

LEGEND

Final surface contours based on A.H.D. datum at an interval of 0.25m, shown as: — 15.5 —

Where applicable, areas to be filled are shown as:

Depth of fill, in metres, shown as: - +0.5

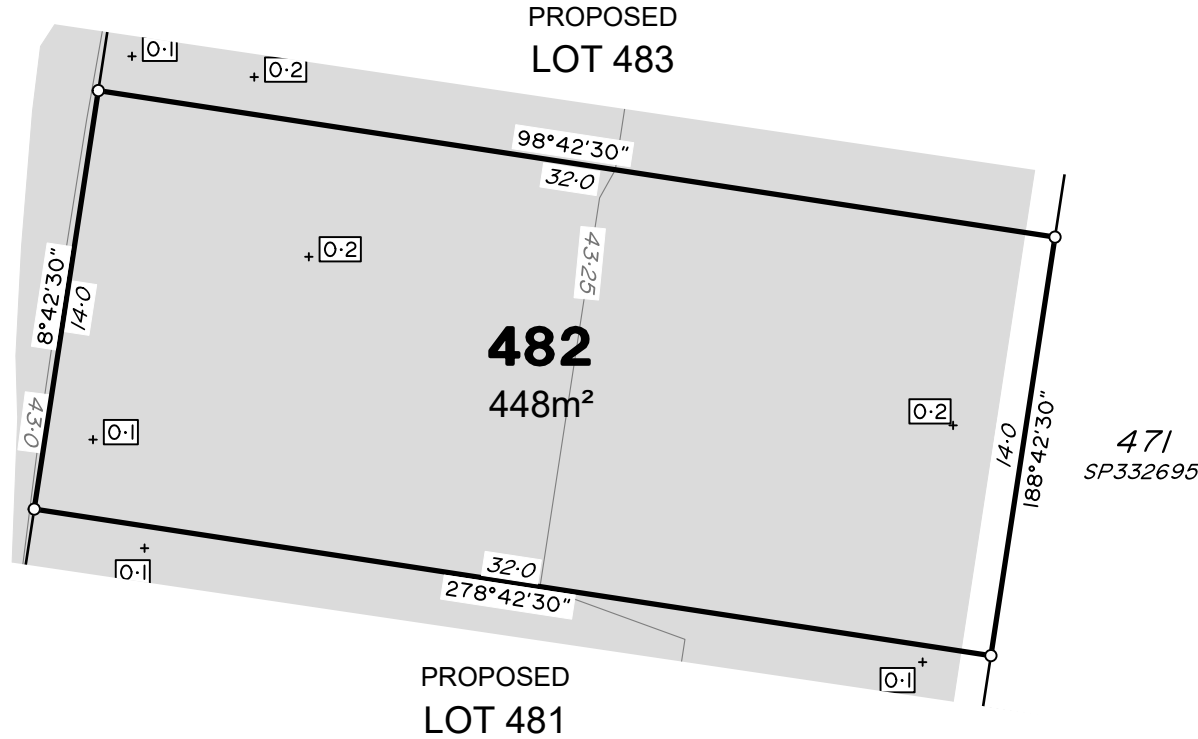
Retaining wall and retaining wall height, shown on the lower side of the wall, have been calculated from digital data supplied by Egis Engineers and shown as:

(1.2)





VERRALL WAY



ADDITIONAL NOTES:

The LOT dimensions and area shown hereon are subject to final field survey and also to the requirements of Council and any other authority which may have requirements under any relevant legislation

Final surface contours & retaining walls shown hereon have been supplied by Egis Engineers.

Compaction of any fill material placed on this site shall be completed to level one inspection and testing services in accordance with AS3798-2007.

Depth of fill values are calculated to the lower of the pre-development surface and the ground surface from Survey.

Copyright © Veris Australia Pty Ltd April 2024.

Dawn
Walloon - Stage 6D
For
ID_Land

IMPORTANT NOTES:
(These notes are an integral part of this plan)

This plan has been prepared for ID_LAND for the purposes of A Disclosure Plan Under the Land Sales Act 1984 (as amended).

It is not to be used by any other person or corporation or for any other purposes and is subject to the following limitations:

Please refer to the approved Development Application for conditions relating to the LOT and to approved Operational Works drawings for services location and possible easements.

THESE DESIGNS AND DRAWINGS ARE COPYRIGHT AND ARE NOT TO BE USED OR REPRODUCED WITHOUT THE WRITTEN PERMISSION OF VERIS

Data Sources	
Cadastral Boundaries	401905-LC01-(Z).dwg
Engineering Design	5721_2023_OW.pdf
Final Surface Contours	23-000032-6D-6F-design tin.12daz
Pre-development Surface	401184-DS01 A

Issue	Revisions	Date	KL/RCS	Drawn
A	Original	10.04.2024	KL/RCS	

Locality:	Walloon
Local Authority:	Ipswich City Council
Horizontal Meridian:	MGA Zone 56
Vertical Level Datum:	AHD
Scale:	1:250 @ A4
Designed:	EGIS ENGINEERS
Drawn:	KL 05/04/2024
Checked:	MJC 18/4/2024
Plot Date:	01 May, 2024
Computer File Ref: 401905-ST6D-DP(A).dwg	

DISCLOSURE PLAN
of Proposed LOT 482
being part of
Lot 4
on SP336196



veris

BRISBANE (07) 3686 4700 WHITSUNDAYS (07) 4945 6600

MACKAY (07) 4957 9700 CAIRNS (07) 4252 9400

veris.com.au
ACN 615 735 727
Veris Australia Pty Ltd

Drawing No 401905-DP 482 Issue A

LEGEND

Final surface contours based on A.H.D. datum at an interval of 0.25m, shown as: — 15.5 —

Where applicable, areas to be filled are shown as:

Depth of fill, in metres, shown as: - +0.5

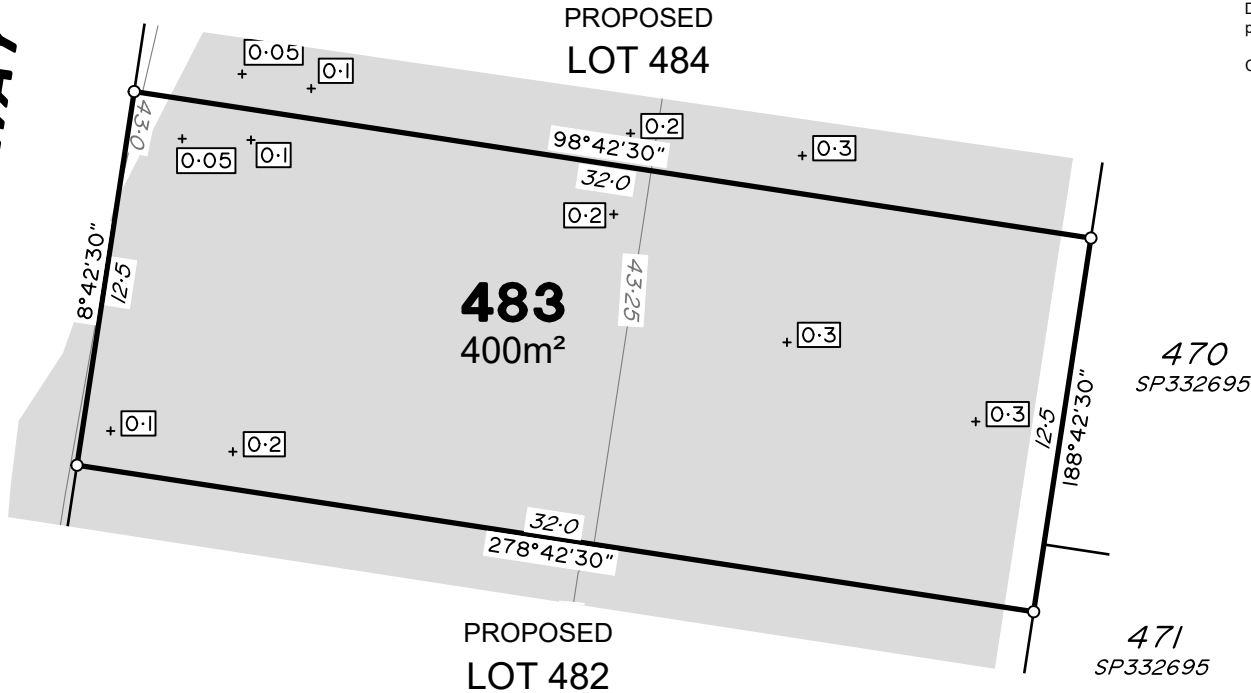
Retaining wall and retaining wall height, shown on the lower side of the wall, have been calculated from digital data supplied by Egis Engineers and shown as:

(1.2)

0 12.5m 25m 37.5m 50mm 100mm 150mm SCALE BAR



VERRALL WAY



ADDITIONAL NOTES:

The LOT dimensions and area shown hereon are subject to final field survey and also to the requirements of Council and any other authority which may have requirements under any relevant legislation

Final surface contours & retaining walls shown hereon have been supplied by Egis Engineers.

Compaction of any fill material placed on this site shall be completed to level one inspection and testing services in accordance with AS3798-2007.

Depth of fill values are calculated to the lower of the pre-development surface and the ground surface from Survey.

Copyright © Veris Australia Pty Ltd April 2024.

Dawn
Walloon - Stage 6D
For
ID_Land

IMPORTANT NOTES:
(These notes are an integral part of this plan)

This plan has been prepared for ID_LAND for the purposes of A Disclosure Plan Under the Land Sales Act 1984 (as amended).

It is not to be used by any other person or corporation or for any other purposes and is subject to the following limitations:

Please refer to the approved Development Application for conditions relating to the LOT and to approved Operational Works drawings for services location and possible easements.

THESE DESIGNS AND DRAWINGS ARE COPYRIGHT AND ARE NOT TO BE USED OR REPRODUCED WITHOUT THE WRITTEN PERMISSION OF VERIS

Data Sources	
Cadastral Boundaries	401905-LC01-(Z).dwg
Engineering Design	5721_2023_OW.pdf
Final Surface Contours	23-000032-6D-6F-design.tin.12daz
Pre-development Surface	401184-DS01 A

Issue	Revisions	Date	Drawn
A	Original	10.04.2024	KL/RCS

Locality:	Walloon
Local Authority:	Ipswich City Council
Horizontal Meridian:	MGA Zone 56
Vertical Level Datum:	AHD
Scale:	1:250 @ A4
Designed:	EGIS ENGINEERS
Drawn:	KL 05/04/2024
Checked:	MJC 18/4/2024
Plot Date:	01 May, 2024
Computer File Ref:	401905-ST6D-DP(A).dwg

DISCLOSURE PLAN
of Proposed LOT 483
being part of
Lot 4
on SP336196



veris

BRISBANE (07) 3686 4700 WHITSUNDAYS (07) 4945 6600

MACKAY (07) 4957 9700 CAIRNS (07) 4252 9400

veris.com.au
ACN 615 735 727
Veris Australia Pty Ltd

Drawing No 401905-DP 483 Issue A

LEGEND

Final surface contours based on A.H.D. datum at an interval of 0.25m, shown as: — 15.5 —

Where applicable, areas to be filled are shown as:

Depth of fill, in metres, shown as:- +0.5

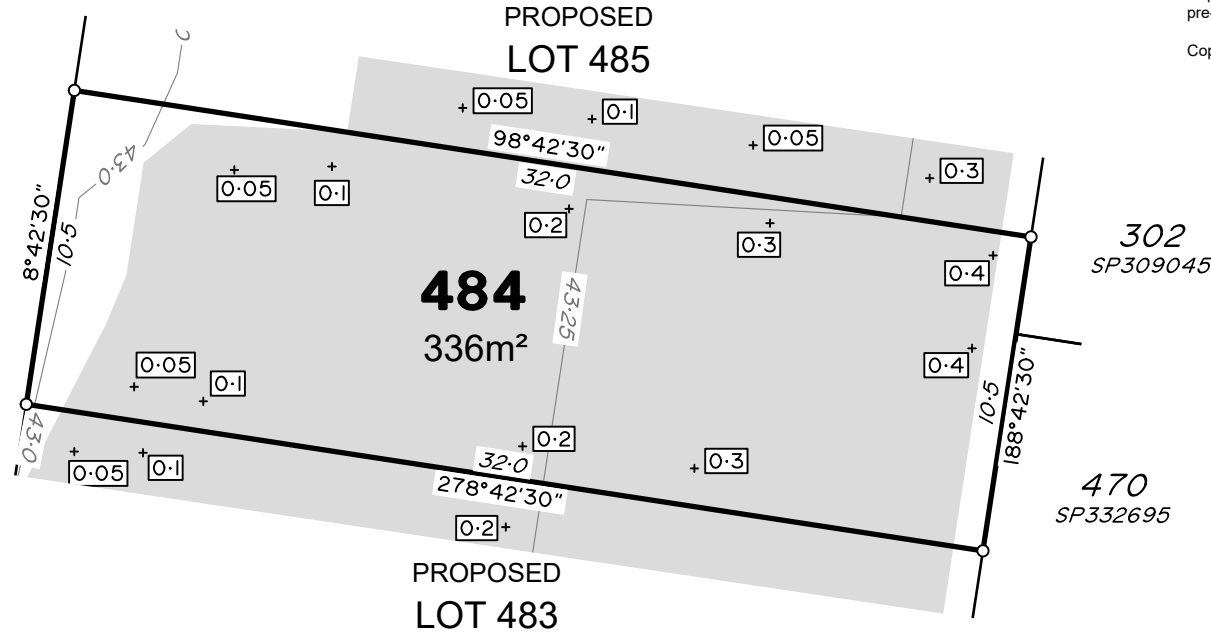
Retaining wall and retaining wall height, shown on the lower side of the wall, have been calculated from digital data supplied by Egis Engineers and shown as:

(1.2)





VERRALL WAY



ADDITIONAL NOTES:

The LOT dimensions and area shown hereon are subject to final field survey and also to the requirements of Council and any other authority which may have requirements under any relevant legislation

Final surface contours & retaining walls shown hereon have been supplied by Egis Engineers.

Compaction of any fill material placed on this site shall be completed to level one inspection and testing services in accordance with AS3798-2007.

Depth of fill values are calculated to the lower of the pre-development surface and the ground surface from Survey.

Copyright © Veris Australia Pty Ltd April 2024.

Dawn
Walloon - Stage 6D
For
ID_Land

IMPORTANT NOTES:
(These notes are an integral part of this plan)

This plan has been prepared for ID_LAND for the purposes of A Disclosure Plan Under the Land Sales Act 1984 (as amended).

It is not to be used by any other person or corporation or for any other purposes and is subject to the following limitations:

Please refer to the approved Development Application for conditions relating to the LOT and to approved Operational Works drawings for services location and possible easements.

THESE DESIGNS AND DRAWINGS ARE COPYRIGHT AND ARE NOT TO BE USED OR REPRODUCED WITHOUT THE WRITTEN PERMISSION OF VERIS

Data Sources	
Cadastral Boundaries	401905-LC01-(Z).dwg
Engineering Design	5721_2023_OW.pdf
Final Surface Contours	23-000032-6D-6F-design tin.12daz
Pre-development Surface	401184-DS01 A

Issue	Revisions	Date	KL/RCS	Drawn
A	Original	10.04.2024	KL/RCS	

Locality:	Walloon
Local Authority:	Ipswich City Council
Horizontal Meridian:	MGA Zone 56
Vertical Level Datum:	AHD
Scale:	1:250 @ A4
Designed:	EGIS ENGINEERS
Drawn:	KL 05/04/2024
Checked:	MJC 18/4/2024
Plot Date:	01 May, 2024
Computer File Ref: 401905-ST6D-DP(A).dwg	

DISCLOSURE PLAN
of Proposed LOT 484
being part of
Lot 4
on SP336196



veris

BRISBANE (07) 3686 4700 WHITSUNDAYS (07) 4945 6600

MACKAY (07) 4957 9700 CAIRNS (07) 4252 9400

veris.com.au
ACN 615 735 727
Veris Australia Pty Ltd

Drawing No 401905-DP 484 Issue A

LEGEND

Final surface contours based on A.H.D. datum at an interval of 0.25m, shown as: 15.5

Where applicable, areas to be filled are shown as:

Depth of fill, in metres, shown as:- + 0.5

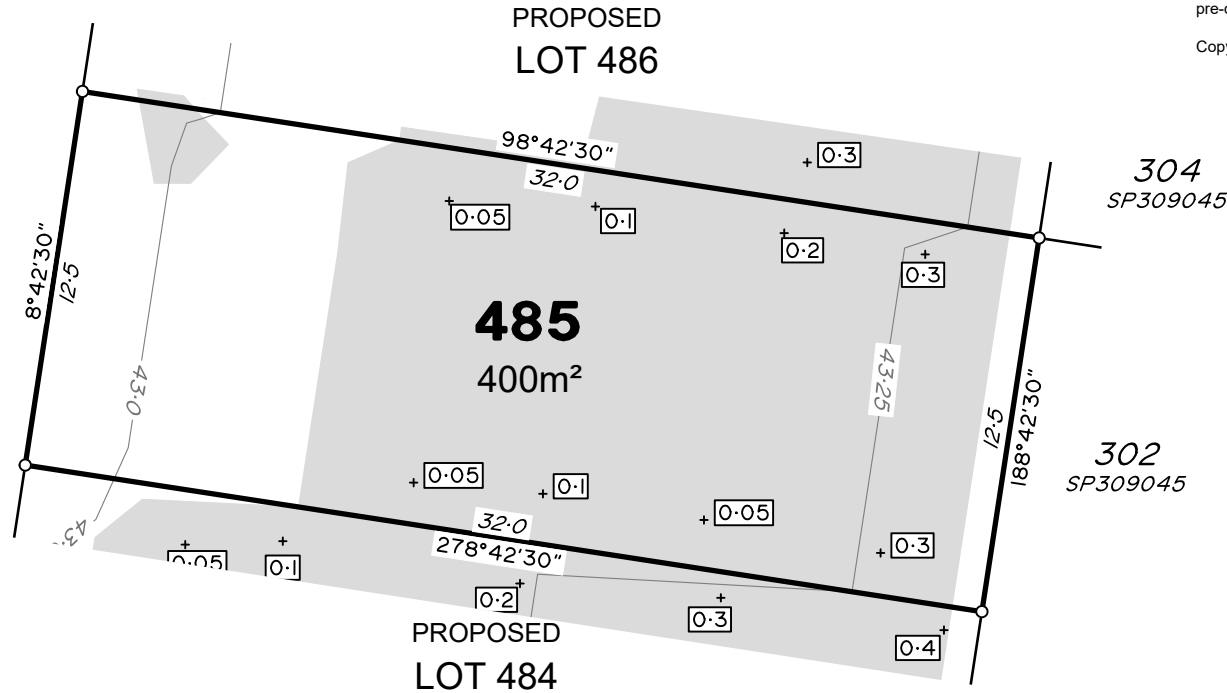
Retaining wall and retaining wall height, shown on the lower side of the wall, have been calculated from digital data supplied by Egis Engineers and shown as:

(1.2)





VERRALL WAY



ADDITIONAL NOTES:

The LOT dimensions and area shown hereon are subject to final field survey and also to the requirements of Council and any other authority which may have requirements under any relevant legislation

Final surface contours & retaining walls shown hereon have been supplied by Egis Engineers.

Compaction of any fill material placed on this site shall be completed to level one inspection and testing services in accordance with AS3798-2007.

Depth of fill values are calculated to the lower of the pre-development surface and the ground surface from Survey.

Copyright © Veris Australia Pty Ltd April 2024.

Dawn
Walloon - Stage 6D
For
ID_Land

IMPORTANT NOTES:
(These notes are an integral part of this plan)

This plan has been prepared for ID_LAND for the purposes of A Disclosure Plan Under the Land Sales Act 1984 (as amended).

It is not to be used by any other person or corporation or for any other purposes and is subject to the following limitations:

Please refer to the approved Development Application for conditions relating to the LOT and to approved Operational Works drawings for services location and possible easements.

THESE DESIGNS AND DRAWINGS ARE COPYRIGHT AND ARE NOT TO BE USED OR REPRODUCED WITHOUT THE WRITTEN PERMISSION OF VERIS

Data Sources	
Cadastral Boundaries	401905-LC01-(Z).dwg
Engineering Design	5721_2023_OW.pdf
Final Surface Contours	23-000032-6D-6F-design tin.12daz
Pre-development Surface	401184-DS01 A

Issue	Revisions	Date	KL/RCS	Drawn
A	Original	10.04.2024	KL/RCS	

Locality:	Walloon
Local Authority:	Ipswich City Council
Horizontal Meridian:	MGA Zone 56
Vertical Level Datum:	AHD
Scale:	1:250 @ A4
Designed:	EGIS ENGINEERS
Drawn:	KL 05/04/2024
Checked:	MJC 18/4/2024
Plot Date:	01 May, 2024
Computer File Ref: 401905-ST6D-DP(A).dwg	

DISCLOSURE PLAN
of Proposed LOT 485
being part of
Lot 4
on SP336196



veris

BRISBANE (07) 3686 4700 WHITSUNDAYS (07) 4945 6600

MACKAY (07) 4957 9700 CAIRNS (07) 4252 9400

veris.com.au
ACN 615 735 727
Veris Australia Pty Ltd

Drawing No 401905-DP 485 Issue A

LEGEND

Final surface contours based on A.H.D. datum at an interval of 0.25m, shown as: — 15.5 —

Where applicable, areas to be filled are shown as:

Depth of fill, in metres, shown as: - +0.5

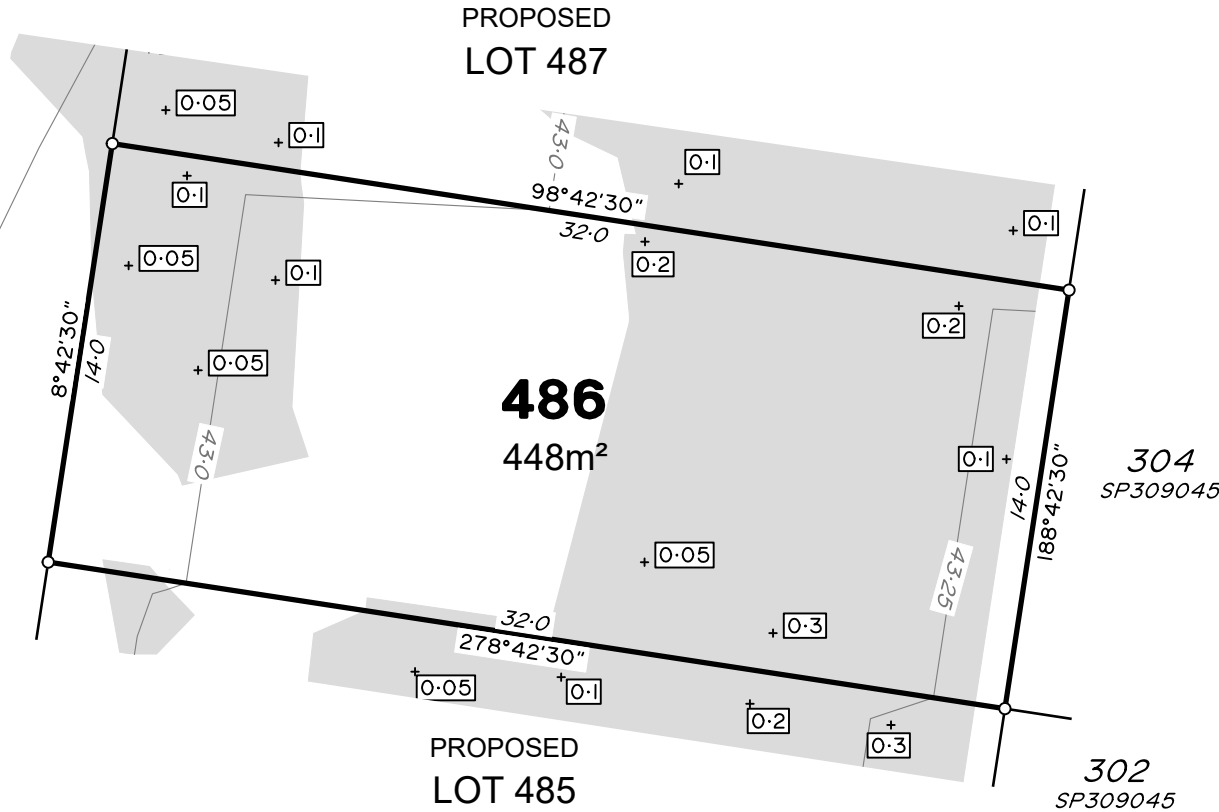
Retaining wall and retaining wall height, shown on the lower side of the wall, have been calculated from digital data supplied by Egis Engineers and shown as:

(1.2)





VERRALL WAY



ADDITIONAL NOTES:

The LOT dimensions and area shown hereon are subject to final field survey and also to the requirements of Council and any other authority which may have requirements under any relevant legislation

Final surface contours & retaining walls shown hereon have been supplied by Egis Engineers.

Compaction of any fill material placed on this site shall be completed to level one inspection and testing services in accordance with AS3798-2007.

Depth of fill values are calculated to the lower of the pre-development surface and the ground surface from Survey.

Copyright © Veris Australia Pty Ltd April 2024.

Dawn
Walloon - Stage 6D
For
ID_Land

IMPORTANT NOTES:
(These notes are an integral part of this plan)

This plan has been prepared for ID_LAND for the purposes of A Disclosure Plan Under the Land Sales Act 1984 (as amended).

It is not to be used by any other person or corporation or for any other purposes and is subject to the following limitations:

Please refer to the approved Development Application for conditions relating to the LOT and to approved Operational Works drawings for services location and possible easements.

THESE DESIGNS AND DRAWINGS ARE COPYRIGHT AND ARE NOT TO BE USED OR REPRODUCED WITHOUT THE WRITTEN PERMISSION OF VERIS

Data Sources	
Cadastral Boundaries	401905-LC01-(Z).dwg
Engineering Design	5721_2023_OW.pdf
Final Surface Contours	23-000032-6D-6F-design tin.12daz
Pre-development Surface	401184-DS01 A

A	Original	10.04.2024	KL/RCS
Issue	Revisions	Date	Drawn

Locality:	Walloon
Local Authority:	Ipswich City Council
Horizontal Meridian:	MGA Zone 56
Vertical Level Datum:	AHD
Scale:	1:250 @ A4
Designed:	EGIS ENGINEERS
Drawn:	KL 05/04/2024
Checked:	MJC 18/4/2024
Plot Date:	01 May, 2024
Computer File Ref: 401905-ST6D-DP(A).dwg	

DISCLOSURE PLAN
of Proposed LOT 486
being part of
Lot 4
on SP336196



veris

BRISBANE (07) 3686 4700 WHITSUNDAYS (07) 4945 6600

MACKAY (07) 4957 9700 CAIRNS (07) 4252 9400

veris.com.au
ACN 615 735 727
Veris Australia Pty Ltd

Drawing No 401905-DP 486 Issue A

LEGEND

Final surface contours based on A.H.D. datum at an interval of 0.25m, shown as: 15.5

Where applicable, areas to be filled are shown as:

Depth of fill, in metres, shown as:- + 0.5

Retaining wall and retaining wall height, shown on the lower side of the wall, have been calculated from digital data supplied by Egis Engineers and shown as: (1.2)





Retaining Wall Lot 487
 Min Height:- 0.6m
 Max Height:- 0.6m
 Average Height:- 0.6m

LANGLAND CIRCUIT

VERRALL WAY

487
 503m²

304
 SP309045

PROPOSED
 LOT 486

ADDITIONAL NOTES:

The LOT dimensions and area shown hereon are subject to final field survey and also to the requirements of Council and any other authority which may have requirements under any relevant legislation

Final surface contours & retaining walls shown hereon have been supplied by Egis Engineers.

Compaction of any fill material placed on this site shall be completed to level one inspection and testing services in accordance with AS3798-2007.

Depth of fill values are calculated to the lower of the pre-development surface and the ground surface from Survey.

Copyright © Veris Australia Pty Ltd April 2024.

Dawn
 Walloon - Stage 6D
 For
 ID_Land

IMPORTANT NOTES:
 (These notes are an integral part of this plan)

This plan has been prepared for ID_LAND for the purposes of A Disclosure Plan Under the Land Sales Act 1984 (as amended).

It is not to be used by any other person or corporation or for any other purposes and is subject to the following limitations:

Please refer to the approved Development Application for conditions relating to the LOT and to approved Operational Works drawings for services location and possible easements.

THESE DESIGNS AND DRAWINGS ARE COPYRIGHT AND ARE NOT TO BE USED OR REPRODUCED WITHOUT THE WRITTEN PERMISSION OF VERIS

Data Sources
 Cadastral Boundaries 401905-LC01-(Z).dwg
 Engineering Design 5721_2023_OW.pdf
 Final Surface Contours 23-000032-6D-6F-design tin.12daz
 Pre-development Surface 401184-DS01 A

Issue	Revisions	Date	Drawn
A	Original	10.04.2024	KL/RCS

Locality: Walloon
 Local Authority: Ipswich City Council
 Horizontal Meridian: MGA Zone 56
 Vertical Level Datum: AHD
 Scale: 1:250 @ A4
 Designed: EGIS ENGINEERS
 Drawn: KL 05/04/2024
 Checked: MJC 18/4/2024
 Plot Date: 01 May, 2024
 Computer File Ref: 401905-ST6D-DP(A).dwg

DISCLOSURE PLAN
 of Proposed LOT 487
 being part of
 Lot 4
 on SP336196



veris

BRISBANE (07) 3686 4700 WHITSUNDAYS (07) 4945 6600

MACKAY (07) 4957 9700 CAIRNS (07) 4252 9400

veris.com.au
 ACN 615 735 727
 Veris Australia Pty Ltd

Drawing No 401905-DP 487 Issue A

LEGEND

Final surface contours based on A.H.D. datum at an interval of 0.25m, shown as: 15.5

Where applicable, areas to be filled are shown as:

Depth of fill, in metres, shown as:- + 0.5

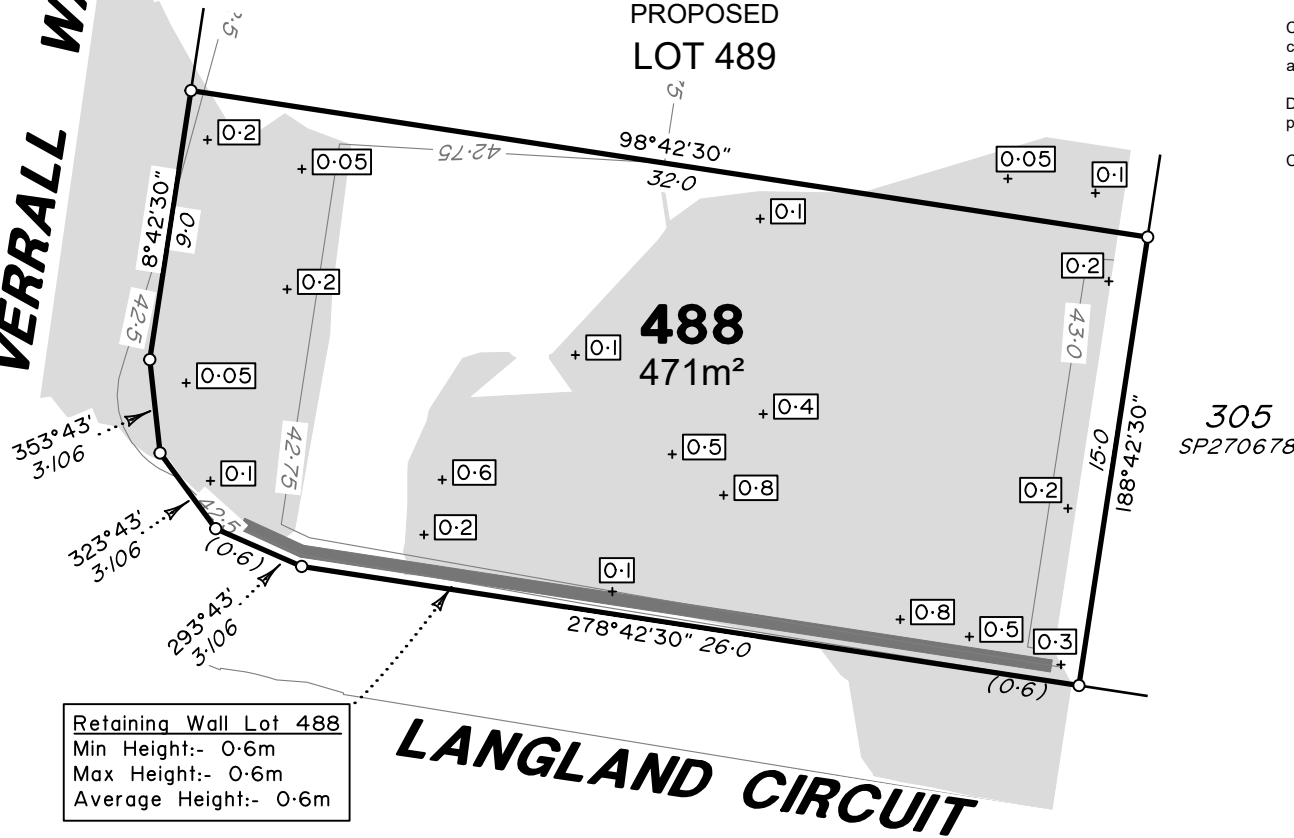
Retaining wall and retaining wall height, shown on the lower side of the wall, have been calculated from digital data supplied by Egis Engineers and shown as:

(1.2)





VERRALL WAY



ADDITIONAL NOTES:

The LOT dimensions and area shown hereon are subject to final field survey and also to the requirements of Council and any other authority which may have requirements under any relevant legislation

Final surface contours & retaining walls shown hereon have been supplied by Egis Engineers.

Compaction of any fill material placed on this site shall be completed to level one inspection and testing services in accordance with AS3798-2007.

Depth of fill values are calculated to the lower of the pre-development surface and the ground surface from Survey.

Copyright © Veris Australia Pty Ltd **April 2024.**

Dawn
Walloon - Stage 6D
For
ID_Land

IMPORTANT NOTES:
(These notes are an integral part of this plan)

This plan has been prepared for ID_LAND for the purposes of A Disclosure Plan Under the Land Sales Act 1984 (as amended).
It is not to be used by any other person or corporation or for any other purposes and is subject to the following limitations:

Please refer to the approved Development Application for conditions relating to the LOT and to approved Operational Works drawings for services location and possible easements.

THESE DESIGNS AND DRAWINGS ARE COPYRIGHT AND ARE NOT TO BE USED OR REPRODUCED WITHOUT THE WRITTEN PERMISSION OF VERIS

Data Sources	
Cadastral Boundaries	401905-LC01-(Z).dwg
Engineering Design	5721_2023_OW.pdf
Final Surface Contours	23-000032-6D-6F-design tin.12daz
Pre-development Surface	401184-DS01 A

Issue	Revisions	Date	KL/RCS	Drawn
A	Original	10.04.2024	KL/RCS	

Locality:	Walloon
Local Authority:	Ipswich City Council
Horizontal Meridian:	MGA Zone 56
Vertical Level Datum:	AHD
Scale:	1:250 @ A4
Designed:	EGIS ENGINEERS
Drawn:	KL 05/04/2024
Checked:	MJC 18/4/2024
Plot Date:	01 May, 2024
Computer File Ref:	401905-ST6D-DP(A).dwg

DISCLOSURE PLAN
of Proposed LOT 488
being part of
Lot 4
on SP336196



veris

BRISBANE (07) 3686 4700 WHITSUNDAYS (07) 4945 6600

MACKAY (07) 4957 9700 CAIRNS (07) 4252 9400

veris.com.au
ACN 615 735 727
Veris Australia Pty Ltd

Drawing No
401905-DP 488
Issue
A

LEGEND

Final surface contours based on A.H.D. datum at an interval of 0.25m, shown as: 15.5

Where applicable, areas to be filled are shown as:

Depth of fill, in metres, shown as:- + 0.5

Retaining wall and retaining wall height, shown on the lower side of the wall, have been calculated from digital data supplied by Egis Engineers and shown as: (1.2)





VERRALL WAY

PROPOSED
LOT 530

489
336m²

PROPOSED
LOT 488

305
SP270678

ADDITIONAL NOTES:

The LOT dimensions and area shown hereon are subject to final field survey and also to the requirements of Council and any other authority which may have requirements under any relevant legislation

Final surface contours & retaining walls shown hereon have been supplied by Egis Engineers.

Compaction of any fill material placed on this site shall be completed to level one inspection and testing services in accordance with AS3798-2007.

Depth of fill values are calculated to the lower of the pre-development surface and the ground surface from Survey.

Copyright © Veris Australia Pty Ltd April 2024.

Dawn
Walloon - Stage 6D

For
ID_Land

IMPORTANT NOTES:
(These notes are an integral part of this plan)

This plan has been prepared for ID_LAND for the purposes of A Disclosure Plan Under the Land Sales Act 1984 (as amended).

It is not to be used by any other person or corporation or for any other purposes and is subject to the following limitations:

Please refer to the approved Development Application for conditions relating to the LOT and to approved Operational Works drawings for services location and possible easements.

THESE DESIGNS AND DRAWINGS ARE COPYRIGHT AND ARE NOT TO BE USED OR REPRODUCED WITHOUT THE WRITTEN PERMISSION OF VERIS

Data Sources

Cadastral Boundaries 401905-LC01-(Z).dwg
Engineering Design 5721_2023_OW.pdf
Final Surface Contours 23-000032-6D-6F-design tin.12daz
Pre-development Surface 401184-DS01 A

Issue	Revisions	Date	KL/RCS	Drawn
A	Original	10.04.2024	KL/RCS	

Locality: Walloon
Local Authority: Ipswich City Council
Horizontal Meridian: MGA Zone 56
Vertical Level Datum: AHD
Scale: 1:250 @ A4
Designed: EGIS ENGINEERS
Drawn: KL 05/04/2024
Checked: MJC 18/4/2024
Plot Date: 01 May, 2024
Computer File Ref: 401905-ST6D-DP(A).dwg

DISCLOSURE PLAN
of Proposed LOT 489
being part of
Lot 4
on SP336196



veris

BRISBANE (07) 3686 4700 WHITSUNDAYS (07) 4945 6600

MACKAY (07) 4957 9700 CAIRNS (07) 4252 9400

veris.com.au
ACN 615 735 727
Veris Australia Pty Ltd

Drawing No 401905-DP 489 Issue A

LEGEND

Final surface contours based on A.H.D. datum at an interval of 0.25m, shown as: — 15.5 —

Where applicable, areas to be filled are shown as:

Depth of fill, in metres, shown as: - +0.5

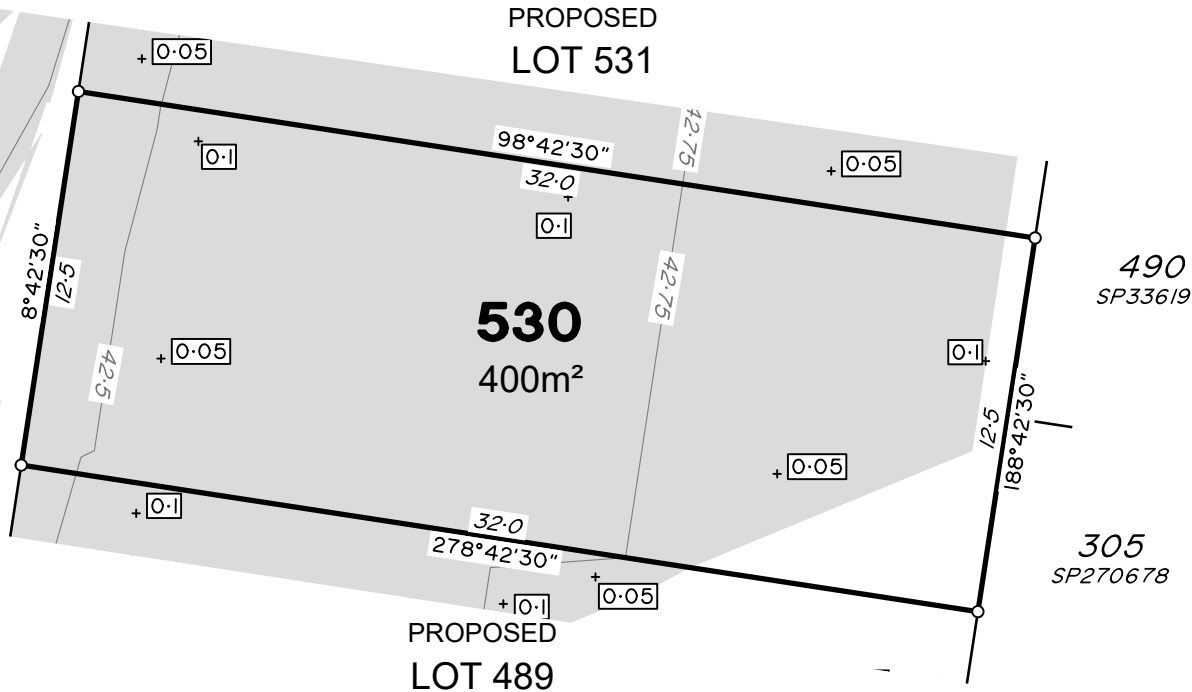
Retaining wall and retaining wall height, shown on the lower side of the wall, have been calculated from digital data supplied by Egis Engineers and shown as:

(1.2)





VERRALL WAY



ADDITIONAL NOTES:

The LOT dimensions and area shown hereon are subject to final field survey and also to the requirements of Council and any other authority which may have requirements under any relevant legislation

Final surface contours & retaining walls shown hereon have been supplied by Egis Engineers.

Compaction of any fill material placed on this site shall be completed to level one inspection and testing services in accordance with AS3798-2007.

Depth of fill values are calculated to the lower of the pre-development surface and the ground surface from Survey.

Copyright © Veris Australia Pty Ltd April 2024.

Dawn
Walloon - Stage 6D
For
ID_Land

IMPORTANT NOTES:
(These notes are an integral part of this plan)

This plan has been prepared for ID_LAND for the purposes of A Disclosure Plan Under the Land Sales Act 1984 (as amended).

It is not to be used by any other person or corporation or for any other purposes and is subject to the following limitations:

Please refer to the approved Development Application for conditions relating to the LOT and to approved Operational Works drawings for services location and possible easements.

THESE DESIGNS AND DRAWINGS ARE COPYRIGHT AND ARE NOT TO BE USED OR REPRODUCED WITHOUT THE WRITTEN PERMISSION OF VERIS

Data Sources	
Cadastral Boundaries	401905-LC01-(Z).dwg
Engineering Design	5721_2023_OW.pdf
Final Surface Contours	23-000032-6D-6F-design tin.12daz
Pre-development Surface	401184-DS01 A

Issue	Revisions	Date	KL/RCS	Drawn
A	Original	10.04.2024	KL/RCS	

Locality:	Walloon
Local Authority:	Ipswich City Council
Horizontal Meridian:	MGA Zone 56
Vertical Level Datum:	AHD
Scale:	1:250 @ A4
Designed:	EGIS ENGINEERS
Drawn:	KL 05/04/2024
Checked:	MJC 18/4/2024
Plot Date:	01 May, 2024
Computer File Ref: 401905-ST6D-DP(A).dwg	

DISCLOSURE PLAN
of Proposed LOT 530
being part of
Lot 4
on SP336196



veris

BRISBANE (07) 3686 4700 WHITSUNDAYS (07) 4945 6600

MACKAY (07) 4957 9700 CAIRNS (07) 4252 9400

veris.com.au
ACN 615 735 727
Veris Australia Pty Ltd

Drawing No 401905-DP 530 Issue A

LEGEND

Final surface contours based on A.H.D. datum at an interval of 0.25m, shown as: 15.5

Where applicable, areas to be filled are shown as:

Depth of fill, in metres, shown as:- + 0.5

Retaining wall and retaining wall height, shown on the lower side of the wall, have been calculated from digital data supplied by Egis Engineers and shown as: (1.2)





VERRALL WAY



490
SP336196

ADDITIONAL NOTES:

The LOT dimensions and area shown hereon are subject to final field survey and also to the requirements of Council and any other authority which may have requirements under any relevant legislation

Final surface contours & retaining walls shown hereon have been supplied by Egis Engineers.

Compaction of any fill material placed on this site shall be completed to level one inspection and testing services in accordance with AS3798-2007.

Depth of fill values are calculated to the lower of the pre-development surface and the ground surface from Survey.

Copyright © Veris Australia Pty Ltd April 2024.

Dawn
Walloon - Stage 6D
For
ID_Land

IMPORTANT NOTES:
(These notes are an integral part of this plan)

This plan has been prepared for ID_LAND for the purposes of A Disclosure Plan Under the Land Sales Act 1984 (as amended).

It is not to be used by any other person or corporation or for any other purposes and is subject to the following limitations:

Please refer to the approved Development Application for conditions relating to the LOT and to approved Operational Works drawings for services location and possible easements.

THESE DESIGNS AND DRAWINGS ARE COPYRIGHT AND ARE NOT TO BE USED OR REPRODUCED WITHOUT THE WRITTEN PERMISSION OF VERIS

Data Sources

Cadastral Boundaries	401905-LC01-(Z).dwg
Engineering Design	5721_2023_OW.pdf
Final Surface Contours	23-000032-6D-6F-design tin.12daz
Pre-development Surface	401184-DS01 A

Issue	Revisions	Date	Drawn
A	Original	10.04.2024	KL/RCS

Locality:	Walloon
Local Authority:	Ipswich City Council
Horizontal Meridian:	MGA Zone 56
Vertical Level Datum:	AHD
Scale:	1:250 @ A4
Designed:	EGIS ENGINEERS
Drawn:	KL 05/04/2024
Checked:	MJC 18/4/2024
Plot Date:	01 May, 2024
Computer File Ref: 401905-ST6D-DP(A).dwg	

DISCLOSURE PLAN
of Proposed LOT 531
being part of
Lot 4
on SP336196



veris

BRISBANE (07) 3686 4700 WHITSUNDAYS (07) 4945 6600

MACKAY (07) 4957 9700 CAIRNS (07) 4252 9400

veris.com.au
ACN 615 735 727
Veris Australia Pty Ltd

Drawing No 401905-DP 531 Issue A

LEGEND

Final surface contours based on A.H.D. datum at an interval of 0.25m, shown as: — 15.5 —

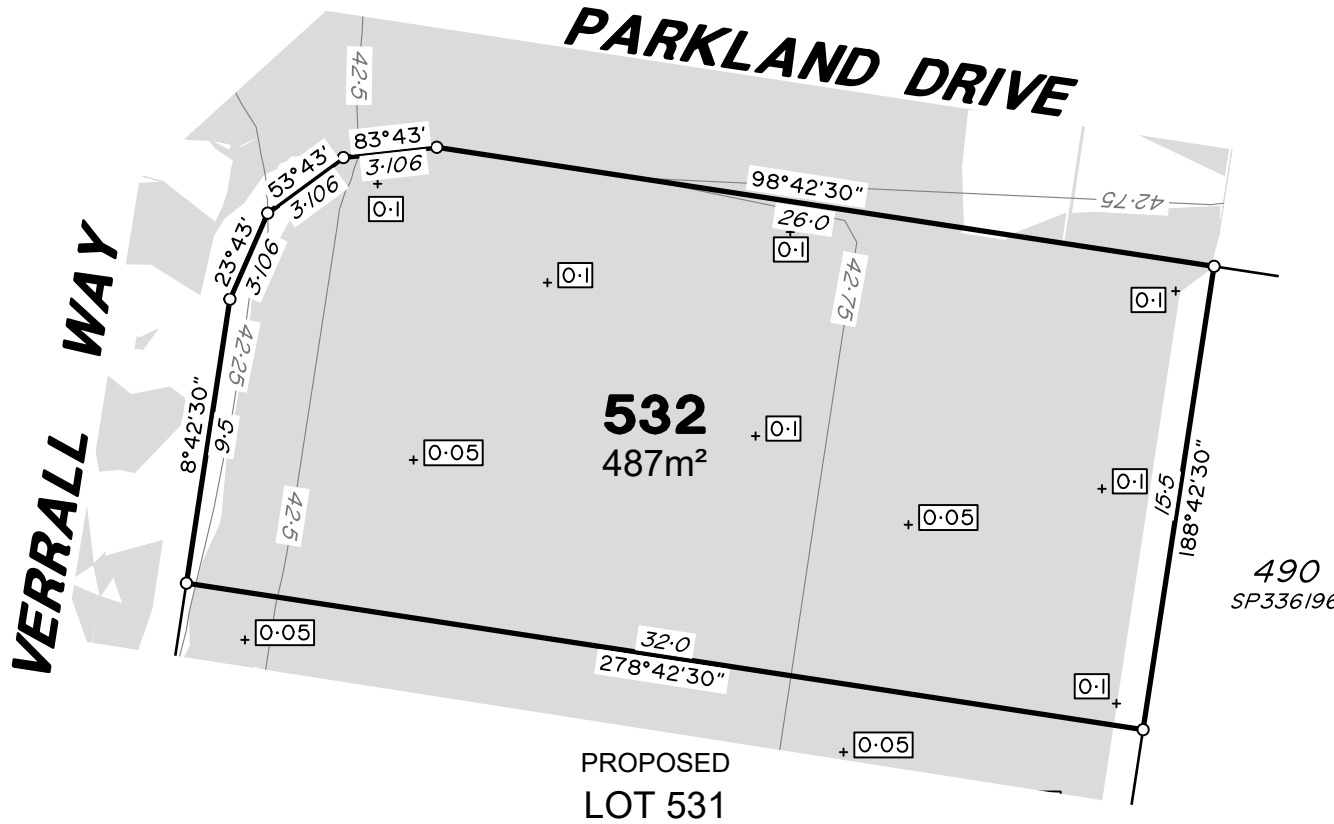
Where applicable, areas to be filled are shown as:

Depth of fill, in metres, shown as: - +0.5

Retaining wall and retaining wall height, shown on the lower side of the wall, have been calculated from digital data supplied by Egis Engineers and shown as:

(1.2)





ADDITIONAL NOTES:

The LOT dimensions and area shown hereon are subject to final field survey and also to the requirements of Council and any other authority which may have requirements under any relevant legislation

Final surface contours & retaining walls shown hereon have been supplied by Egis Engineers.

Compaction of any fill material placed on this site shall be completed to level one inspection and testing services in accordance with AS3798-2007.

Depth of fill values are calculated to the lower of the pre-development surface and the ground surface from Survey.

Copyright © Veris Australia Pty Ltd April 2024.

Dawn
Walloon - Stage 6D
For
ID_Land

IMPORTANT NOTES:
(These notes are an integral part of this plan)

This plan has been prepared for ID_LAND for the purposes of A Disclosure Plan Under the Land Sales Act 1984 (as amended). It is not to be used by any other person or corporation or for any other purposes and is subject to the following limitations:

Please refer to the approved Development Application for conditions relating to the LOT and to approved Operational Works drawings for services location and possible easements.

THESE DESIGNS AND DRAWINGS ARE COPYRIGHT AND ARE NOT TO BE USED OR REPRODUCED WITHOUT THE WRITTEN PERMISSION OF VERIS

Data Sources

Cadastral Boundaries	401905-LC01-(Z).dwg
Engineering Design	5721_2023_OW.pdf
Final Surface Contours	23-000032-6D-6F-design tin.12daz
Pre-development Surface	401184-DS01 A

Issue	Revisions	Date	KL/RCS	Drawn
A	Original	10.04.2024	KL/RCS	

Locality:	Walloon
Local Authority:	Ipswich City Council
Horizontal Meridian:	MGA Zone 56
Vertical Level Datum:	AHD
Scale:	1:250 @ A4
Designed:	EGIS ENGINEERS
Drawn:	KL 05/04/2024
Checked:	MJC 18/4/2024
Plot Date:	01 May, 2024
Computer File Ref:	401905-ST6D-DP(A).dwg

DISCLOSURE PLAN
of Proposed LOT 532
being part of
Lot 4
on SP336196



veris

BRISBANE (07) 3686 4700 WHITSUNDAYS (07) 4945 6600

MACKAY (07) 4957 9700 CAIRNS (07) 4252 9400

veris.com.au
ACN 615 735 727
Veris Australia Pty Ltd

Drawing No 401905-DP 532 Issue A

LEGEND

Final surface contours based on A.H.D. datum at an interval of 0.25m, shown as: — 15.5 —

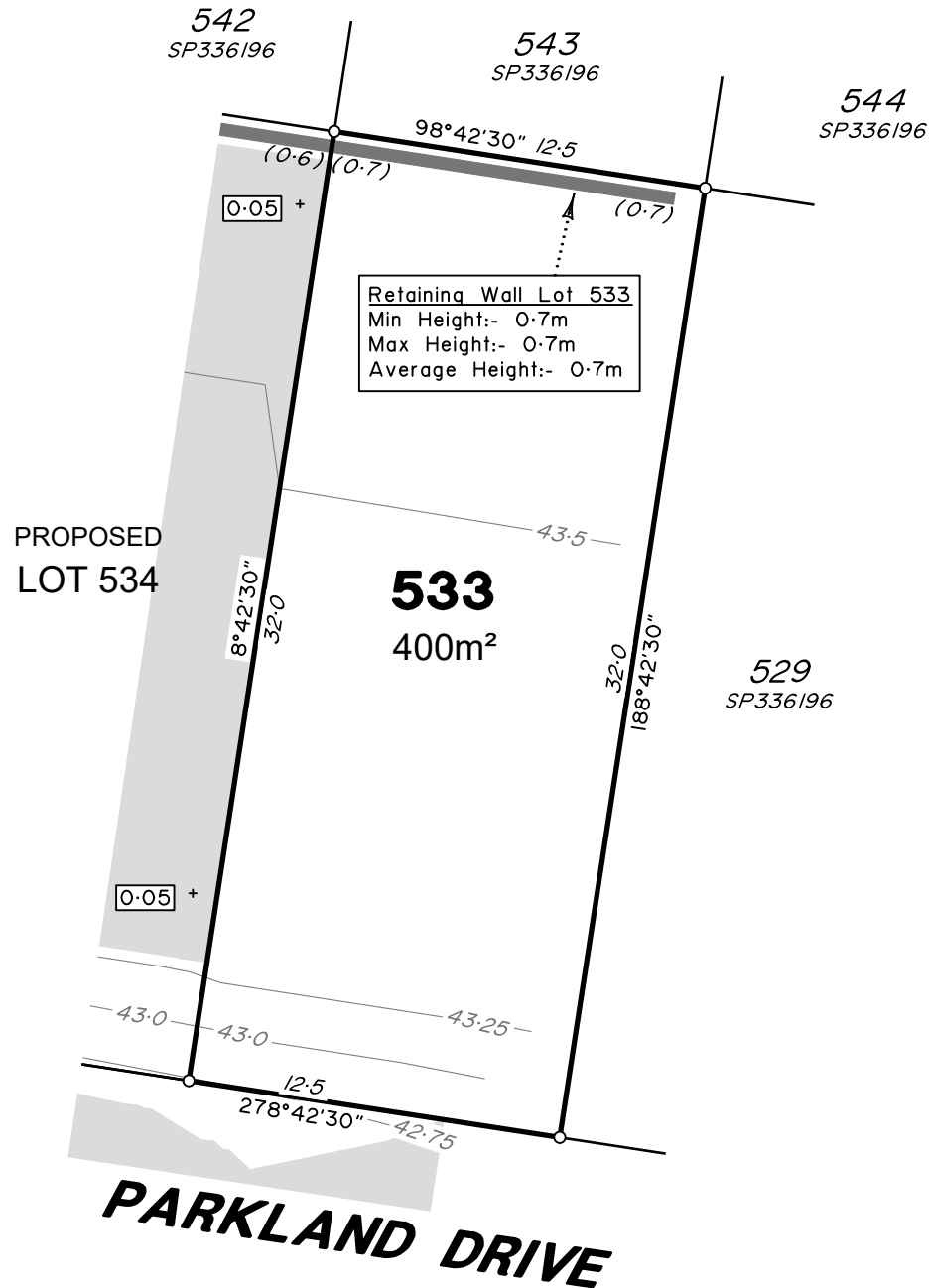
Where applicable, areas to be filled are shown as:

Depth of fill, in metres, shown as:- +0.5

Retaining wall and retaining wall height, shown on the lower side of the wall, have been calculated from digital data supplied by Egis Engineers and shown as:

(1.2)





ADDITIONAL NOTES:

The LOT dimensions and area shown hereon are subject to final field survey and also to the requirements of Council and any other authority which may have requirements under any relevant legislation

Final surface contours & retaining walls shown hereon have been supplied by Egis Engineers.

Compaction of any fill material placed on this site shall be completed to level one inspection and testing services in accordance with AS3798-2007.

Depth of fill values are calculated to the lower of the pre-development surface and the ground surface from Survey.

Copyright © Veris Australia Pty Ltd April 2024.

Dawn
Walloon - Stage 6D
For
ID_Land

IMPORTANT NOTES:
(These notes are an integral part of this plan)

This plan has been prepared for ID_LAND for the purposes of A Disclosure Plan Under the Land Sales Act 1984 (as amended).

It is not to be used by any other person or corporation or for any other purposes and is subject to the following limitations:

Please refer to the approved Development Application for conditions relating to the LOT and to approved Operational Works drawings for services location and possible easements.

THESE DESIGNS AND DRAWINGS ARE COPYRIGHT AND ARE NOT TO BE USED OR REPRODUCED WITHOUT THE WRITTEN PERMISSION OF VERIS

Data Sources

Cadastral Boundaries	401905-LC01-(Z).dwg
Engineering Design	5721_2023_OW.pdf
Final Surface Contours	23-000032-6D-6F-design tin.12daz
Pre-development Surface	401184-DS01 A

A	Original	10.04.2024	KL/RCS
Issue	Revisions	Date	Drawn

Locality:	Walloon
Local Authority:	Ipswich City Council
Horizontal Meridian:	MGA Zone 56
Vertical Level Datum:	AHD
Scale:	1:250 @ A4
Designed:	EGIS ENGINEERS
Drawn:	KL 05/04/2024
Checked:	MJC 18/4/2024
Plot Date:	01 May, 2024
Computer File Ref:	401905-ST6D-DP(A).dwg

DISCLOSURE PLAN
of Proposed LOT 533
being part of
Lot 4
on SP336196



veris

BRISBANE (07) 3686 4700 WHITSUNDAYS (07) 4945 6600

MACKAY (07) 4957 9700 CAIRNS (07) 4252 9400

veris.com.au
ACN 615 735 727
Veris Australia Pty Ltd

Drawing No 401905-DP 533 Issue A

LEGEND

Final surface contours based on A.H.D. datum at an interval of 0.25m, shown as: 15.5

Where applicable, areas to be filled are shown as:

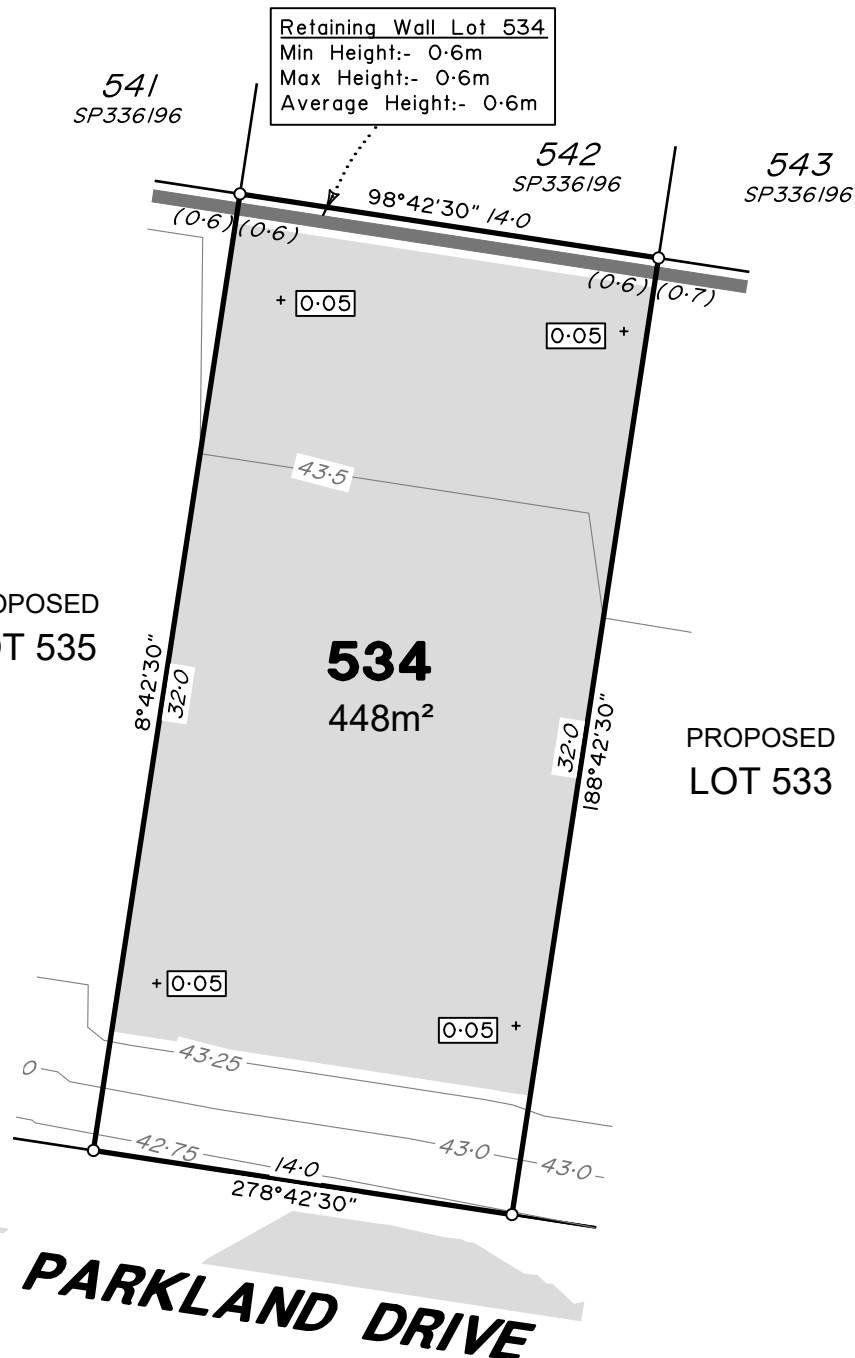
Depth of fill, in metres, shown as:- + 0.5

Retaining wall and retaining wall height, shown on the lower side of the wall, have been calculated from digital data supplied by Egis Engineers and shown as: (1.2)





PROPOSED LOT 535



ADDITIONAL NOTES:

The LOT dimensions and area shown hereon are subject to final field survey and also to the requirements of Council and any other authority which may have requirements under any relevant legislation

Final surface contours & retaining walls shown hereon have been supplied by Egis Engineers.

Compaction of any fill material placed on this site shall be completed to level one inspection and testing services in accordance with AS3798-2007.

Depth of fill values are calculated to the lower of the pre-development surface and the ground surface from Survey.

Copyright © Veris Australia Pty Ltd April 2024.

Dawn
Walloon - Stage 6D
For
ID_Land

IMPORTANT NOTES:
(These notes are an integral part of this plan)

This plan has been prepared for ID_LAND for the purposes of A Disclosure Plan Under the Land Sales Act 1984 (as amended).

It is not to be used by any other person or corporation or for any other purposes and is subject to the following limitations:

Please refer to the approved Development Application for conditions relating to the LOT and to approved Operational Works drawings for services location and possible easements.

THESE DESIGNS AND DRAWINGS ARE COPYRIGHT AND ARE NOT TO BE USED OR REPRODUCED WITHOUT THE WRITTEN PERMISSION OF VERIS

Data Sources

Cadastral Boundaries	401905-LC01-(Z).dwg
Engineering Design	5721_2023_OW.pdf
Final Surface Contours	23-000032-6D-6F-design tin.12daz
Pre-development Surface	401184-DS01 A

Issue	Revisions	Date	Drawn
A	Original	10.04.2024	KL/RCS

Locality:	Walloon
Local Authority:	Ipswich City Council
Horizontal Meridian:	MGA Zone 56
Vertical Level Datum:	AHD
Scale:	1:250 @ A4
Designed:	EGIS ENGINEERS
Drawn:	KL 05/04/2024
Checked:	MJC 18/4/2024
Plot Date:	01 May, 2024
Computer File Ref:	401905-ST6D-DP(A).dwg

DISCLOSURE PLAN
of Proposed LOT 534
being part of
Lot 4
on SP336196



veris

BRISBANE (07) 3686 4700 WHITSUNDAYS (07) 4945 6600

MACKAY (07) 4957 9700 CAIRNS (07) 4252 9400

veris.com.au
ACN 615 735 727
Veris Australia Pty Ltd

Drawing No 401905-DP 534 Issue A

LEGEND

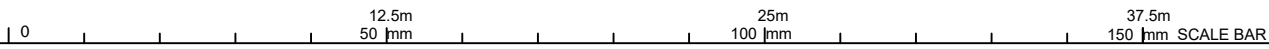
Final surface contours based on A.H.D. datum at an interval of 0.25m, shown as: — 15.5 —

Where applicable, areas to be filled are shown as:

Depth of fill, in metres, shown as:- +0.5

Retaining wall and retaining wall height, shown on the lower side of the wall, have been calculated from digital data supplied by Egis Engineers and shown as:

(1.2)

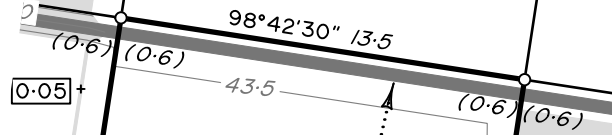




PROPOSED
LOT 540

541
SP336196

542
SP336196

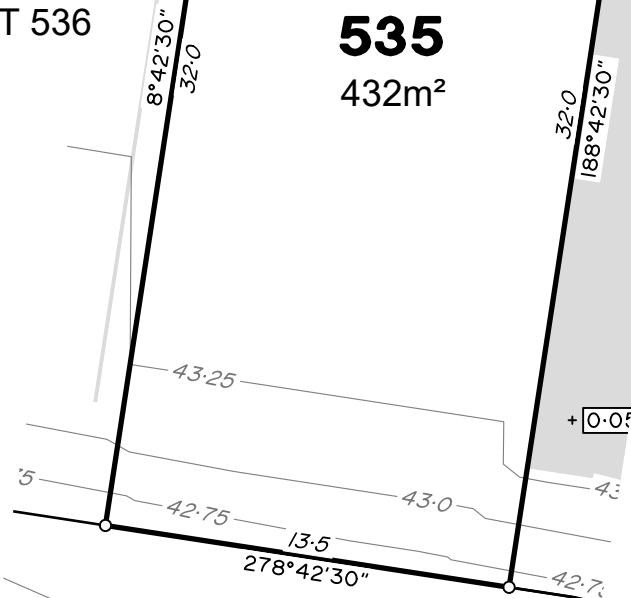


Retaining Wall Lot 535
 Min Height:- 0.6m
 Max Height:- 0.6m
 Average Height:- 0.6m

PROPOSED
LOT 536

535
432m²

PROPOSED
LOT 534



PARKLAND DRIVE

ADDITIONAL NOTES:

The LOT dimensions and area shown hereon are subject to final field survey and also to the requirements of Council and any other authority which may have requirements under any relevant legislation

Final surface contours & retaining walls shown hereon have been supplied by Egis Engineers.

Compaction of any fill material placed on this site shall be completed to level one inspection and testing services in accordance with AS3798-2007.

Depth of fill values are calculated to the lower of the pre-development surface and the ground surface from Survey.

Copyright © Veris Australia Pty Ltd April 2024.

Dawn
Walloon - Stage 6D
For
ID_Land

IMPORTANT NOTES:
(These notes are an integral part of this plan)

This plan has been prepared for ID_LAND for the purposes of A Disclosure Plan Under the Land Sales Act 1984 (as amended).

It is not to be used by any other person or corporation or for any other purposes and is subject to the following limitations:

Please refer to the approved Development Application for conditions relating to the LOT and to approved Operational Works drawings for services location and possible easements.

THESE DESIGNS AND DRAWINGS ARE COPYRIGHT AND ARE NOT TO BE USED OR REPRODUCED WITHOUT THE WRITTEN PERMISSION OF VERIS

Data Sources
 Cadastral Boundaries 401905-LC01-(Z).dwg
 Engineering Design 5721_2023_OW.pdf
 Final Surface Contours 23-000032-6D-6F-design tin.12daz
 Pre-development Surface 401184-DS01 A

Issue	Revisions	Date	Drawn
A	Original	10.04.2024	KL/RCS

Locality: Walloon
 Local Authority: Ipswich City Council
 Horizontal Meridian: MGA Zone 56
 Vertical Level Datum: AHD
 Scale: 1:250 @ A4
 Designed: EGIS ENGINEERS
 Drawn: KL 05/04/2024
 Checked: MJC 18/4/2024
 Plot Date: 01 May, 2024
 Computer File Ref: 401905-ST6D-DP(A).dwg

DISCLOSURE PLAN
of Proposed LOT 535
being part of
Lot 4
on SP336196



veris

BRISBANE (07) 3686 4700 WHITSUNDAYS (07) 4945 6600

MACKAY (07) 4957 9700 CAIRNS (07) 4252 9400

veris.com.au
ACN 615 735 727
Veris Australia Pty Ltd

Drawing No 401905-DP 535 Issue A

LEGEND

Final surface contours based on A.H.D. datum at an interval of 0.25m, shown as: 15.5

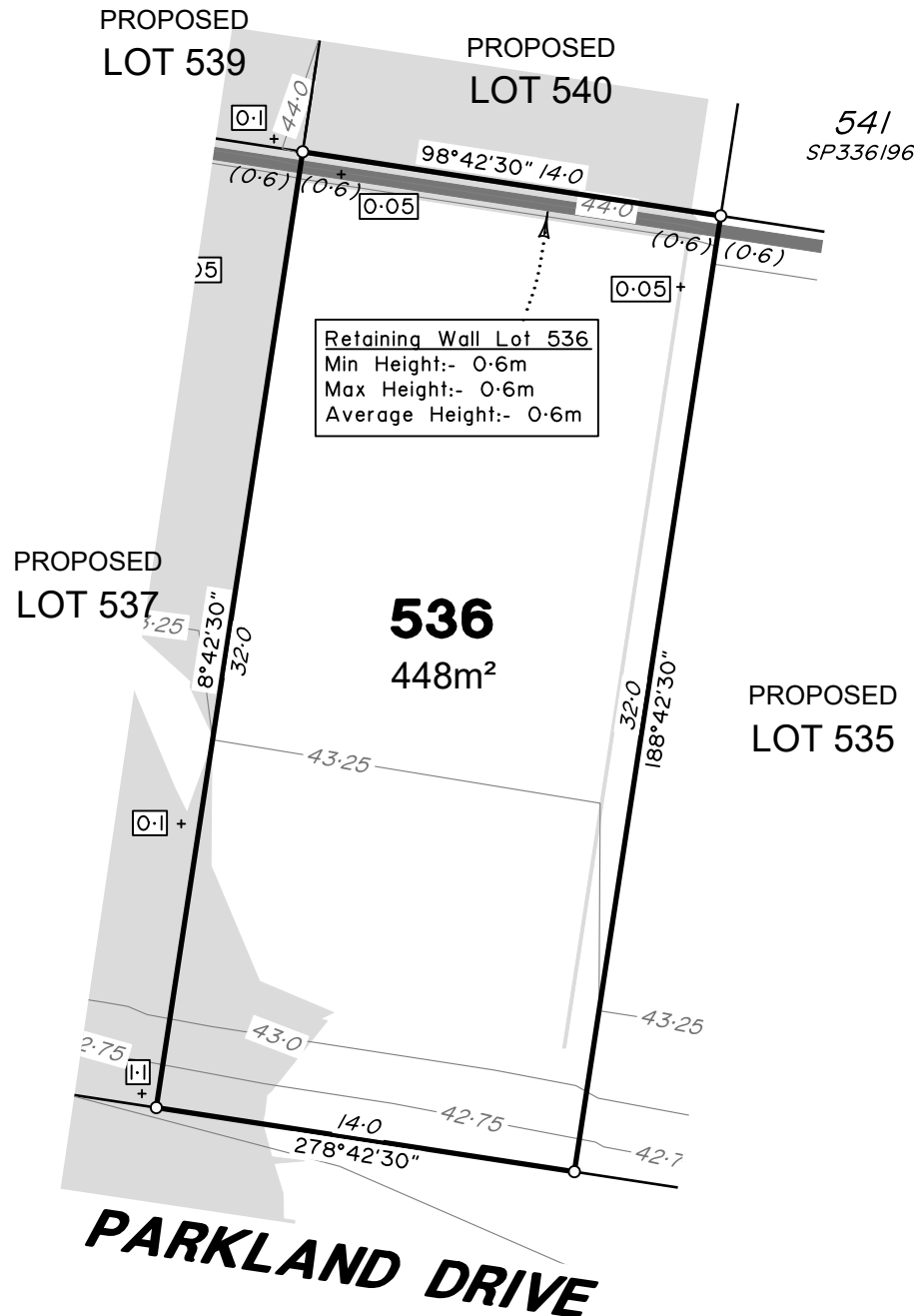
Where applicable, areas to be filled are shown as:

Depth of fill, in metres, shown as:- +

Retaining wall and retaining wall height, shown on the lower side of the wall, have been calculated from digital data supplied by Egis Engineers and shown as:

(1.2)





Retaining Wall Lot 536
 Min Height:- 0.6m
 Max Height:- 0.6m
 Average Height:- 0.6m

ADDITIONAL NOTES:

The LOT dimensions and area shown hereon are subject to final field survey and also to the requirements of Council and any other authority which may have requirements under any relevant legislation

Final surface contours & retaining walls shown hereon have been supplied by Egis Engineers.

Compaction of any fill material placed on this site shall be completed to level one inspection and testing services in accordance with AS3798-2007.

Depth of fill values are calculated to the lower of the pre-development surface and the ground surface from Survey.

Copyright © Veris Australia Pty Ltd April 2024.

Dawn
 Walloon - Stage 6D
 For
 ID_Land

IMPORTANT NOTES:
 (These notes are an integral part of this plan)

This plan has been prepared for ID_LAND for the purposes of A Disclosure Plan Under the Land Sales Act 1984 (as amended).

It is not to be used by any other person or corporation or for any other purposes and is subject to the following limitations:

Please refer to the approved Development Application for conditions relating to the LOT and to approved Operational Works drawings for services location and possible easements.

THESE DESIGNS AND DRAWINGS ARE COPYRIGHT AND ARE NOT TO BE USED OR REPRODUCED WITHOUT THE WRITTEN PERMISSION OF VERIS

Data Sources

Cadastral Boundaries	401905-LC01-(Z).dwg
Engineering Design	5721_2023_OW.pdf
Final Surface Contours	23-000032-6D-6F-design tin.12daz
Pre-development Surface	401184-DS01 A

Issue	Revisions	Date	Drawn
A	Original	10.04.2024	KL/RCS

Locality:	Walloon
Local Authority:	Ipswich City Council
Horizontal Meridian:	MGA Zone 56
Vertical Level Datum:	AHD
Scale:	1:250 @ A4
Designed:	EGIS ENGINEERS
Drawn:	KL 05/04/2024
Checked:	MJC 18/4/2024
Plot Date:	01 May, 2024
Computer File Ref: 401905-ST6D-DP(A).dwg	

DISCLOSURE PLAN
 of Proposed LOT 536
 being part of
 Lot 4
 on SP336196



veris

BRISBANE (07) 3686 4700 WHITSUNDAYS (07) 4945 6600

MACKAY (07) 4957 9700 CAIRNS (07) 4252 9400

veris.com.au
 ACN 615 735 727
 Veris Australia Pty Ltd

Drawing No 401905-DP 536 Issue A

LEGEND

Final surface contours based on A.H.D. datum at an interval of 0.25m, shown as: 15.5

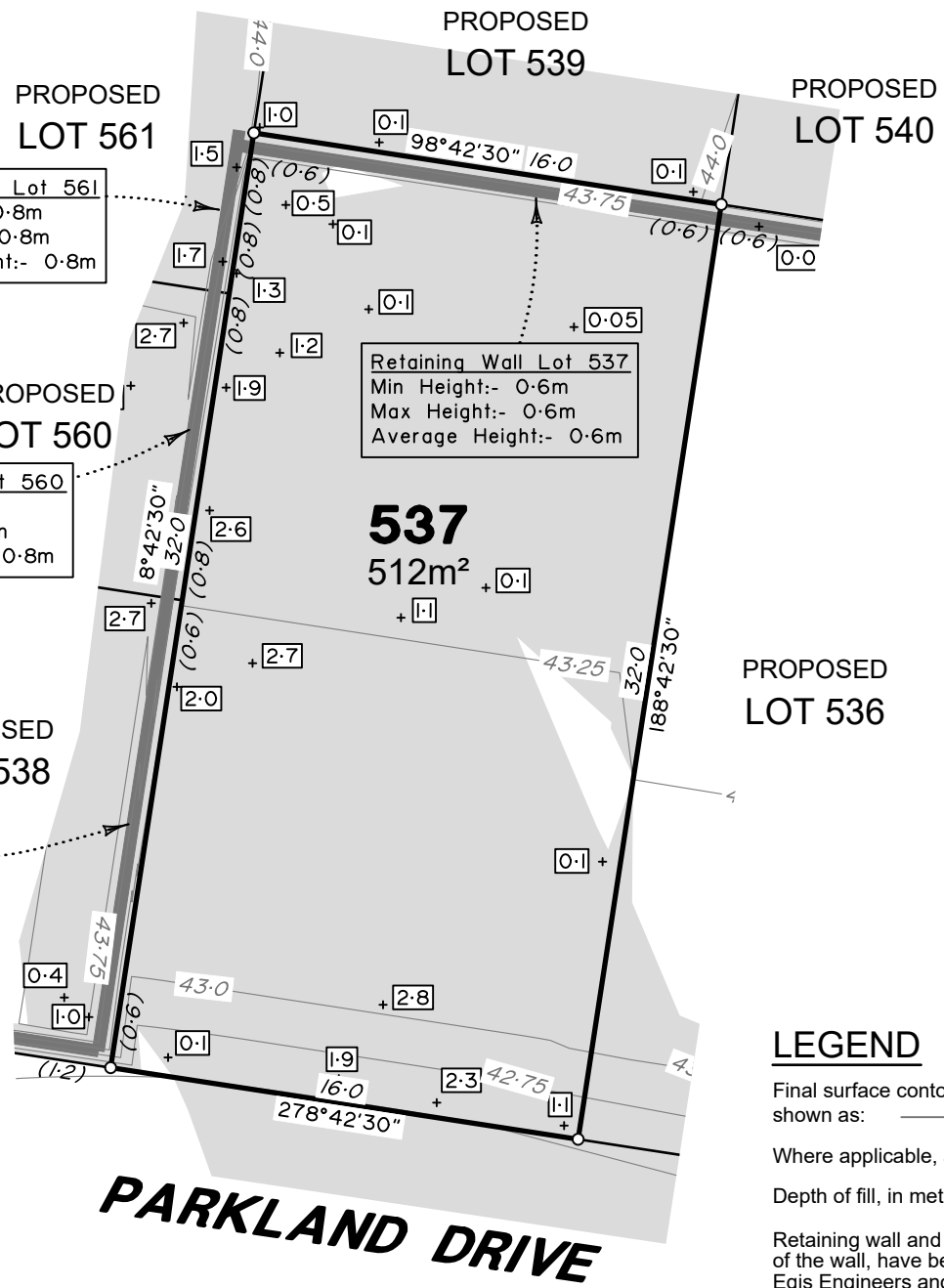
Where applicable, areas to be filled are shown as:

Depth of fill, in metres, shown as:- + 0.5

Retaining wall and retaining wall height, shown on the lower side of the wall, have been calculated from digital data supplied by Egis Engineers and shown as:

(1.2)





Retaining Wall Lot 561
 Min Height:- 0.8m
 Max Height:- 0.8m
 Average Height:- 0.8m

Retaining Wall Lot 537
 Min Height:- 0.6m
 Max Height:- 0.6m
 Average Height:- 0.6m

Retaining Wall Lot 560
 Min Height:- 0.8m
 Max Height:- 0.8m
 Average Height:- 0.8m

Retaining Wall Lot 538
 Min Height:- 0.6m
 Max Height:- 0.6m
 Average Height:- 0.6m

ADDITIONAL NOTES:
 The LOT dimensions and area shown hereon are subject to final field survey and also to the requirements of Council and any other authority which may have requirements under any relevant legislation

Final surface contours & retaining walls shown hereon have been supplied by Egis Engineers.

Compaction of any fill material placed on this site shall be completed to level one inspection and testing services in accordance with AS3798-2007.

Depth of fill values are calculated to the lower of the pre-development surface and the ground surface from Survey.

Copyright © Veris Australia Pty Ltd April 2024.

Dawn
 Walloon - Stage 6D
 For
 ID_Land

IMPORTANT NOTES:
 (These notes are an integral part of this plan)

This plan has been prepared for ID_LAND for the purposes of A Disclosure Plan Under the Land Sales Act 1984 (as amended). It is not to be used by any other person or corporation or for any other purposes and is subject to the following limitations:

Please refer to the approved Development Application for conditions relating to the LOT and to approved Operational Works drawings for services location and possible easements.

THESE DESIGNS AND DRAWINGS ARE COPYRIGHT AND ARE NOT TO BE USED OR REPRODUCED WITHOUT THE WRITTEN PERMISSION OF VERIS

Data Sources

Cadastral Boundaries	401905-LC01-(Z).dwg
Engineering Design	5721_2023_OW.pdf
Final Surface Contours	23-000032-6D-6F-design tin.12daz
Pre-development Surface	401184-DS01 A

Issue	Revisions	Date	KL/RCS	Drawn
A	Original	10.04.2024	KL/RCS	

Locality:	Walloon
Local Authority:	Ipswich City Council
Horizontal Meridian:	MGA Zone 56
Vertical Level Datum:	AHD
Scale:	1:250 @ A4
Designed:	EGIS ENGINEERS
Drawn:	KL 05/04/2024
Checked:	MJC 18/4/2024
Plot Date:	01 May, 2024
Computer File Ref:	401905-ST6D-DP(A).dwg

DISCLOSURE PLAN
 of Proposed LOT 537
 being part of
 Lot 4
 on SP336196



veris

BRISBANE (07) 3686 4700 WHITSUNDAYS (07) 4945 6600
 MACKAY (07) 4957 9700 CAIRNS (07) 4252 9400
 veris.com.au
 ACN 615 735 727
 Veris Australia Pty Ltd

LEGEND

Final surface contours based on A.H.D. datum at an interval of 0.25m, shown as: — 15.5 —

Where applicable, areas to be filled are shown as:

Depth of fill, in metres, shown as:- +0.5

Retaining wall and retaining wall height, shown on the lower side of the wall, have been calculated from digital data supplied by Egis Engineers and shown as:





FURPHY STREET

PROPOSED LOT 560

538
503m²

PROPOSED LOT 537

PARKLAND DRIVE

ADDITIONAL NOTES:

The LOT dimensions and area shown hereon are subject to final field survey and also to the requirements of Council and any other authority which may have requirements under any relevant legislation

Final surface contours & retaining walls shown hereon have been supplied by Egis Engineers.

Compaction of any fill material placed on this site shall be completed to level one inspection and testing services in accordance with AS3798-2007.

Depth of fill values are calculated to the lower of the pre-development surface and the ground surface from Survey.

Copyright © Veris Australia Pty Ltd April 2024.

Retaining Wall Lot 538
Min Height:- 0.6m
Max Height:- 0.6m
Average Height:- 0.6m

Retaining Wall Lot 538
Min Height:- 0.5m
Max Height:- 1.2m
Average Height:- 0.85m

LEGEND

Final surface contours based on A.H.D. datum at an interval of 0.25m, shown as: — 15.5 —

Where applicable, areas to be filled are shown as:

Depth of fill, in metres, shown as:- +0.5

Retaining wall and retaining wall height, shown on the lower side of the wall, have been calculated from digital data supplied by Egis Engineers and shown as:

(1.2)

Dawn
Walloon - Stage 6D
For
ID_Land

IMPORTANT NOTES:
(These notes are an integral part of this plan)

This plan has been prepared for ID_LAND for the purposes of A Disclosure Plan Under the Land Sales Act 1984 (as amended).
It is not to be used by any other person or corporation or for any other purposes and is subject to the following limitations:

Please refer to the approved Development Application for conditions relating to the LOT and to approved Operational Works drawings for services location and possible easements.

THESE DESIGNS AND DRAWINGS ARE COPYRIGHT AND ARE NOT TO BE USED OR REPRODUCED WITHOUT THE WRITTEN PERMISSION OF VERIS

Data Sources	
Cadastral Boundaries	401905-LC01-(Z).dwg
Engineering Design	5721_2023_OW.pdf
Final Surface Contours	23-000032-6D-6F-design tin.12daz
Pre-development Surface	401184-DS01 A

Issue	Revisions	Date	KL/RCS	Drawn
A	Original	10.04.2024	KL/RCS	

Locality:	Walloon
Local Authority:	Ipswich City Council
Horizontal Meridian:	MGA Zone 56
Vertical Level Datum:	AHD
Scale:	1:250 @ A4
Designed:	EGIS ENGINEERS
Drawn:	KL 05/04/2024
Checked:	MJC 18/4/2024
Plot Date:	01 May, 2024
Computer File Ref:	401905-ST6D-DP(A).dwg

DISCLOSURE PLAN
of Proposed LOT 538
being part of
Lot 4
on SP336196



veris

BRISBANE (07) 3686 4700 WHITSUNDAYS (07) 4945 6600

MACKAY (07) 4957 9700 CAIRNS (07) 4252 9400

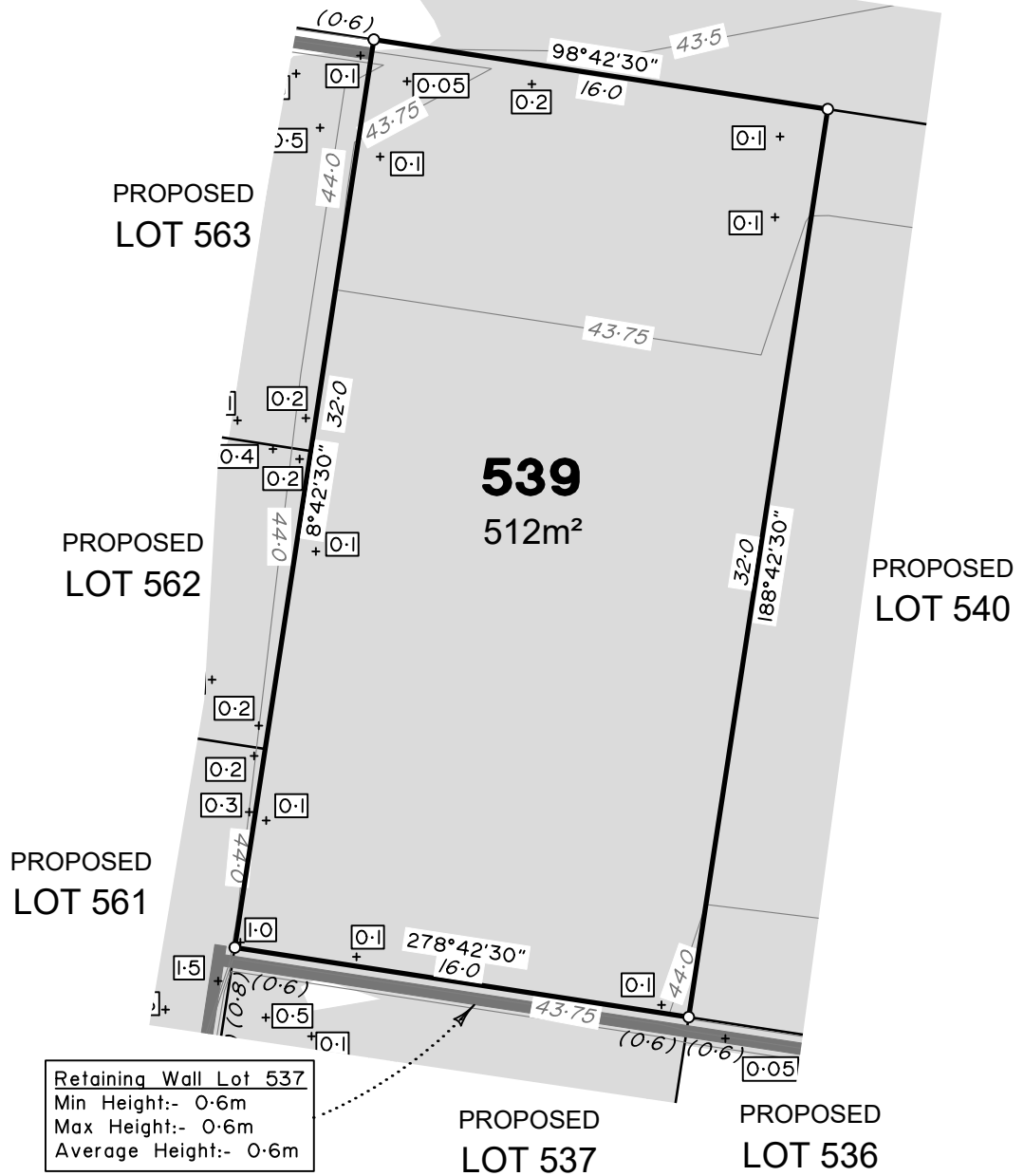
veris.com.au
ACN 615 735 727
Veris Australia Pty Ltd

Drawing No 401905-DP 538 Issue A

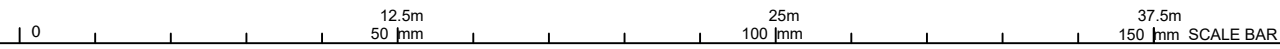




GILMORE STREET



Retaining Wall Lot 537
 Min Height:- 0.6m
 Max Height:- 0.6m
 Average Height:- 0.6m



ADDITIONAL NOTES:

The LOT dimensions and area shown hereon are subject to final field survey and also to the requirements of Council and any other authority which may have requirements under any relevant legislation

Final surface contours & retaining walls shown hereon have been supplied by Egis Engineers.

Compaction of any fill material placed on this site shall be completed to level one inspection and testing services in accordance with AS3798-2007.

Depth of fill values are calculated to the lower of the pre-development surface and the ground surface from Survey.

Copyright © Veris Australia Pty Ltd April 2024.

Dawn
 Walloon - Stage 6D
 For
 ID_Land

IMPORTANT NOTES:
 (These notes are an integral part of this plan)

This plan has been prepared for ID_LAND for the purposes of A Disclosure Plan Under the Land Sales Act 1984 (as amended).

It is not to be used by any other person or corporation or for any other purposes and is subject to the following limitations:

Please refer to the approved Development Application for conditions relating to the LOT and to approved Operational Works drawings for services location and possible easements.

THESE DESIGNS AND DRAWINGS ARE COPYRIGHT AND ARE NOT TO BE USED OR REPRODUCED WITHOUT THE WRITTEN PERMISSION OF VERIS

Data Sources	
Cadastral Boundaries	401905-LC01-(Z).dwg
Engineering Design	5721_2023_OW.pdf
Final Surface Contours	23-000032-6D-6F-design tin.12daz
Pre-development Surface	401184-DS01 A

Issue	Revisions	Date	KL/RCS	Drawn
A	Original	10.04.2024	KL/RCS	

Locality:	Walloon
Local Authority:	Ipswich City Council
Horizontal Meridian:	MGA Zone 56
Vertical Level Datum:	AHD
Scale:	1:250 @ A4
Designed:	EGIS ENGINEERS
Drawn:	KL 05/04/2024
Checked:	MJC 18/4/2024
Plot Date:	01 May, 2024
Computer File Ref: 401905-ST6D-DP(A).dwg	

DISCLOSURE PLAN
 of Proposed LOT 539
 being part of
 Lot 4
 on SP336196



veris

BRISBANE (07) 3686 4700 WHITSUNDAYS (07) 4945 6600

MACKAY (07) 4957 9700 CAIRNS (07) 4252 9400

veris.com.au
 ACN 615 735 727
 Veris Australia Pty Ltd

Drawing No 401905-DP 539 Issue A

LEGEND

Final surface contours based on A.H.D. datum at an interval of 0.25m, shown as: 15.5

Where applicable, areas to be filled are shown as:

Depth of fill, in metres, shown as:- +0.5

Retaining wall and retaining wall height, shown on the lower side of the wall, have been calculated from digital data supplied by Egis Engineers and shown as: (1.2)



GILMORE STREET

PROPOSED LOT 539

540
448m²

541
SP336196

PROPOSED LOT 537

Retaining Wall Lot 537
Min Height:- 0.6m
Max Height:- 0.6m
Average Height:- 0.6m

PROPOSED LOT 536

PROPOSED LOT 535



ADDITIONAL NOTES:

The LOT dimensions and area shown hereon are subject to final field survey and also to the requirements of Council and any other authority which may have requirements under any relevant legislation

Final surface contours & retaining walls shown hereon have been supplied by Egis Engineers.

Compaction of any fill material placed on this site shall be completed to level one inspection and testing services in accordance with AS3798-2007.

Depth of fill values are calculated to the lower of the pre-development surface and the ground surface from Survey.

Copyright © Veris Australia Pty Ltd April 2024.

Dawn
Walloon - Stage 6D
For
ID_Land

IMPORTANT NOTES:
(These notes are an integral part of this plan)

This plan has been prepared for ID_LAND for the purposes of A Disclosure Plan Under the Land Sales Act 1984 (as amended).

It is not to be used by any other person or corporation or for any other purposes and is subject to the following limitations:

Please refer to the approved Development Application for conditions relating to the LOT and to approved Operational Works drawings for services location and possible easements.

THESE DESIGNS AND DRAWINGS ARE COPYRIGHT AND ARE NOT TO BE USED OR REPRODUCED WITHOUT THE WRITTEN PERMISSION OF VERIS

Data Sources	
Cadastral Boundaries	401905-LC01-(Z).dwg
Engineering Design	5721_2023_OW.pdf
Final Surface Contours	23-000032-6D-6F-design tin.12daz
Pre-development Surface	401184-DS01 A

Issue	Revisions	Date	KL/RCS	Drawn
A	Original	10.04.2024	KL/RCS	

Locality:	Walloon
Local Authority:	Ipswich City Council
Horizontal Meridian:	MGA Zone 56
Vertical Level Datum:	AHD
Scale:	1:250 @ A4
Designed:	EGIS ENGINEERS
Drawn:	KL 05/04/2024
Checked:	MJC 18/4/2024
Plot Date:	01 May, 2024
Computer File Ref: 401905-ST6D-DP(A).dwg	

DISCLOSURE PLAN
of Proposed LOT 540
being part of
Lot 4
on SP336196



veris

BRISBANE (07) 3686 4700 WHITSUNDAYS (07) 4945 6600

MACKAY (07) 4957 9700 CAIRNS (07) 4252 9400

veris.com.au
ACN 615 735 727
Veris Australia Pty Ltd

Drawing No 401905-DP 540 Issue A

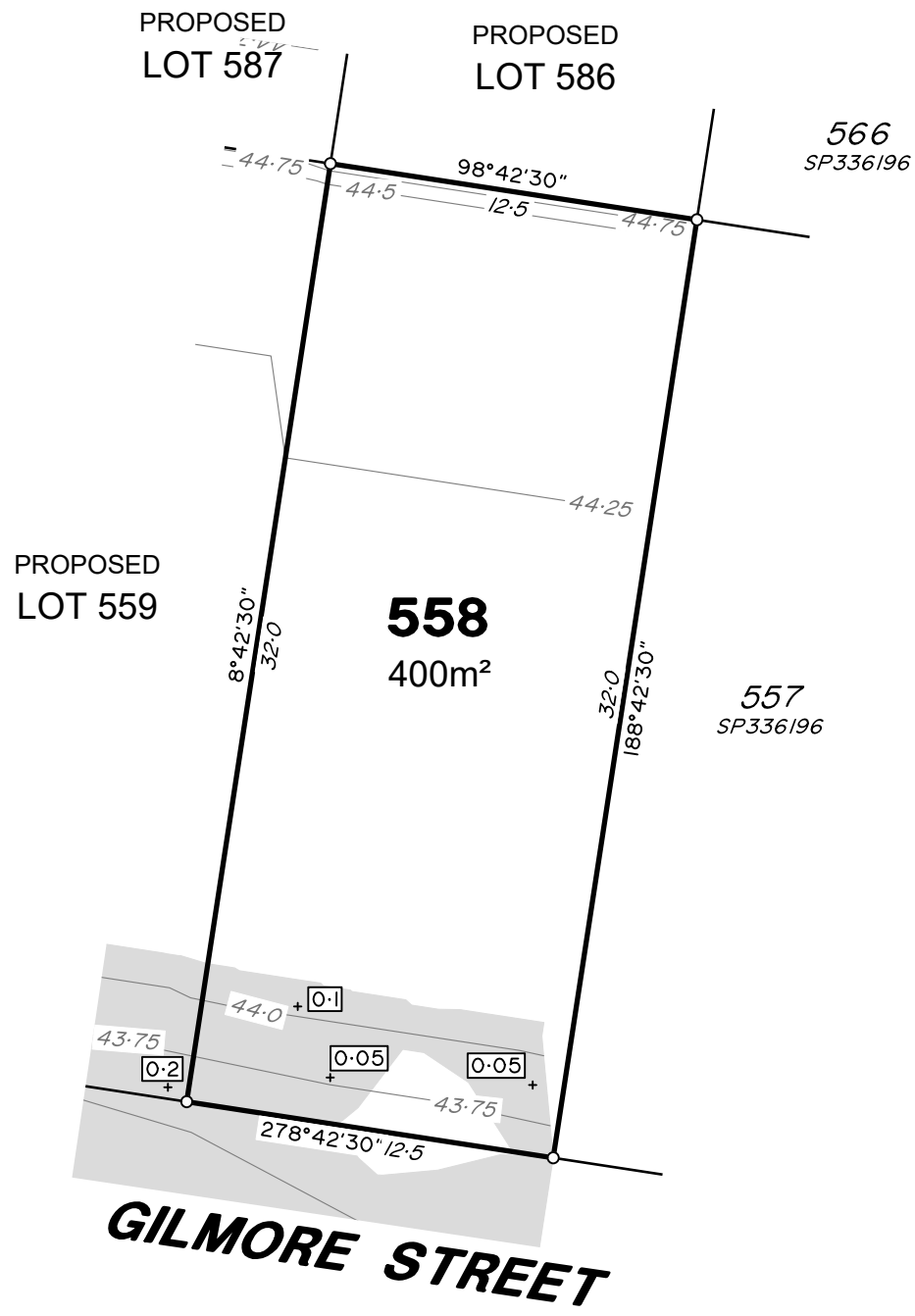
LEGEND

Final surface contours based on A.H.D. datum at an interval of 0.25m, shown as: 15.5

Where applicable, areas to be filled are shown as:

Depth of fill, in metres, shown as:- +

Retaining wall and retaining wall height, shown on the lower side of the wall, have been calculated from digital data supplied by Egis Engineers and shown as: (1.2)



ADDITIONAL NOTES:
 The LOT dimensions and area shown hereon are subject to final field survey and also to the requirements of Council and any other authority which may have requirements under any relevant legislation

Final surface contours & retaining walls shown hereon have been supplied by Egis Engineers.

Compaction of any fill material placed on this site shall be completed to level one inspection and testing services in accordance with AS3798-2007.

Depth of fill values are calculated to the lower of the pre-development surface and the ground surface from Survey.

Copyright © Veris Australia Pty Ltd April 2024.

Dawn
 Walloon - Stage 6D
 For
 ID_Land

IMPORTANT NOTES:
 (These notes are an integral part of this plan)
 This plan has been prepared for ID_LAND for the purposes of A Disclosure Plan Under the Land Sales Act 1984 (as amended). It is not to be used by any other person or corporation or for any other purposes and is subject to the following limitations:

Please refer to the approved Development Application for conditions relating to the LOT and to approved Operational Works drawings for services location and possible easements.

THESE DESIGNS AND DRAWINGS ARE COPYRIGHT AND ARE NOT TO BE USED OR REPRODUCED WITHOUT THE WRITTEN PERMISSION OF VERIS

Data Sources

Cadastral Boundaries	401905-LC01-(Z).dwg
Engineering Design	5721_2023_OW.pdf
Final Surface Contours	23-000032-6D-6F-design tin.12daz
Pre-development Surface	401184-DS01 A

Issue	Revisions	Date	KL/RCS	Drawn
A	Original	10.04.2024	KL/RCS	

Locality:	Walloon
Local Authority:	Ipswich City Council
Horizontal Meridian:	MGA Zone 56
Vertical Level Datum:	AHD
Scale:	1:250 @ A4
Designed:	EGIS ENGINEERS
Drawn:	KL 05/04/2024
Checked:	MJC 18/4/2024
Plot Date:	01 May, 2024
Computer File Ref: 401905-ST6D-DP(A).dwg	

DISCLOSURE PLAN
 of Proposed LOT 558
 being part of
 Lot 4
 on SP336196



veris

BRISBANE (07) 3686 4700 WHITSUNDAYS (07) 4945 6600
 MACKAY (07) 4957 9700 CAIRNS (07) 4252 9400
 veris.com.au
 ACN 615 735 727
 Veris Australia Pty Ltd

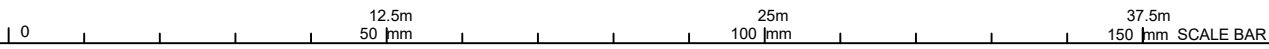
LEGEND

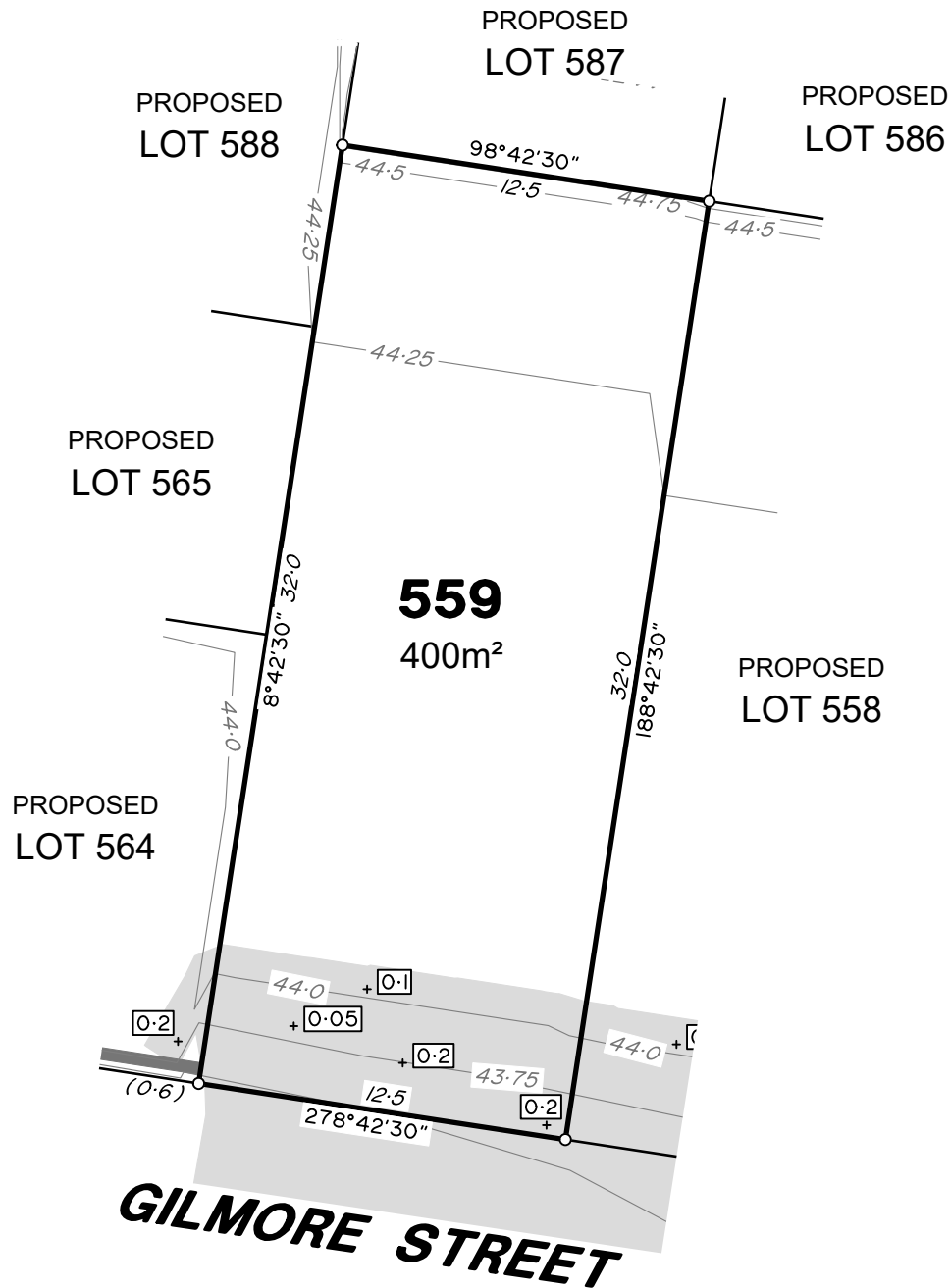
Final surface contours based on A.H.D. datum at an interval of 0.25m, shown as: 15.5

Where applicable, areas to be filled are shown as:

Depth of fill, in metres, shown as: - + 0.5

Retaining wall and retaining wall height, shown on the lower side of the wall, have been calculated from digital data supplied by Egis Engineers and shown as: (1.2)





ADDITIONAL NOTES:

The LOT dimensions and area shown hereon are subject to final field survey and also to the requirements of Council and any other authority which may have requirements under any relevant legislation

Final surface contours & retaining walls shown hereon have been supplied by Egis Engineers.

Compaction of any fill material placed on this site shall be completed to level one inspection and testing services in accordance with AS3798-2007.

Depth of fill values are calculated to the lower of the pre-development surface and the ground surface from Survey.

Copyright © Veris Australia Pty Ltd April 2024.

Dawn
Walloon - Stage 6D
For
ID_Land

IMPORTANT NOTES:
(These notes are an integral part of this plan)

This plan has been prepared for ID_LAND for the purposes of A Disclosure Plan Under the Land Sales Act 1984 (as amended).
It is not to be used by any other person or corporation or for any other purposes and is subject to the following limitations:

Please refer to the approved Development Application for conditions relating to the LOT and to approved Operational Works drawings for services location and possible easements.

THESE DESIGNS AND DRAWINGS ARE COPYRIGHT AND ARE NOT TO BE USED OR REPRODUCED WITHOUT THE WRITTEN PERMISSION OF VERIS

Data Sources

Cadastral Boundaries	401905-LC01-(Z).dwg
Engineering Design	5721_2023_OW.pdf
Final Surface Contours	23-000032-6D-6F-design tin.12daz
Pre-development Surface	401184-DS01 A

Issue	Revisions	Date	KL/RCS	Drawn
A	Original	10.04.2024	KL/RCS	

Locality:	Walloon
Local Authority:	Ipswich City Council
Horizontal Meridian:	MGA Zone 56
Vertical Level Datum:	AHD
Scale:	1:250 @ A4
Designed:	EGIS ENGINEERS
Drawn:	KL 05/04/2024
Checked:	MJC 18/4/2024
Plot Date:	01 May, 2024
Computer File Ref:	401905-ST6D-DP(A).dwg

DISCLOSURE PLAN
of Proposed LOT 559
being part of
Lot 4
on SP336196



veris

BRISBANE (07) 3686 4700 WHITSUNDAYS (07) 4945 6600

MACKAY (07) 4957 9700 CAIRNS (07) 4252 9400

veris.com.au
ACN 615 735 727
Veris Australia Pty Ltd

Drawing No 401905-DP 559 Issue A

LEGEND

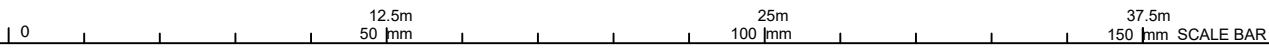
Final surface contours based on A.H.D. datum at an interval of 0.25m, shown as: — 15.5 —

Where applicable, areas to be filled are shown as:

Depth of fill, in metres, shown as:- + 0.5

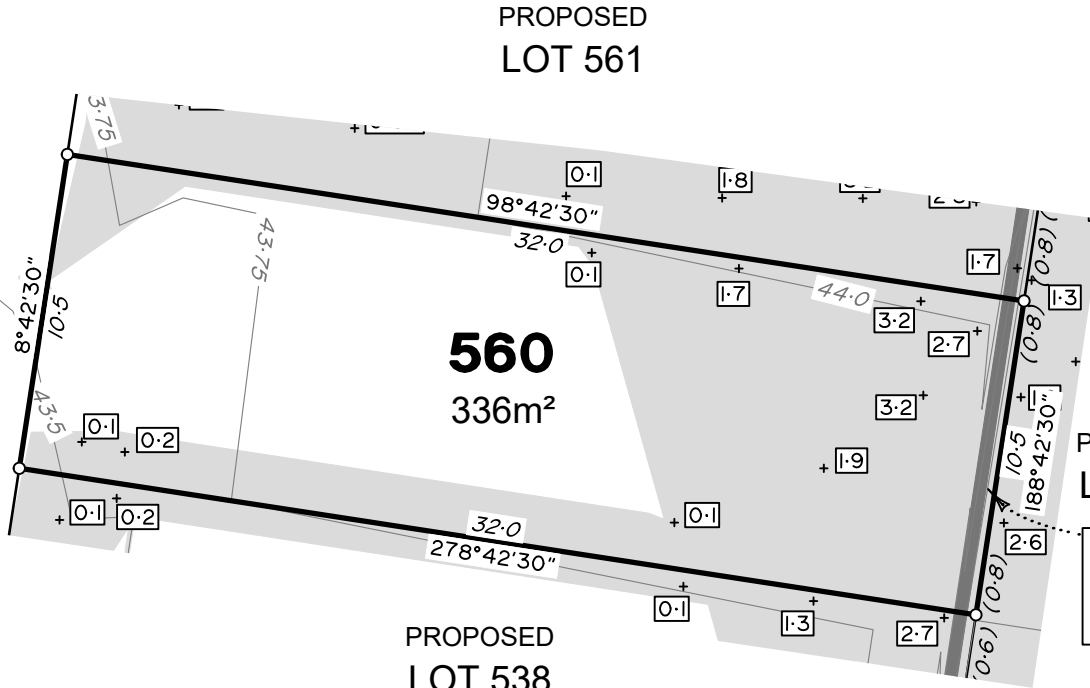
Retaining wall and retaining wall height, shown on the lower side of the wall, have been calculated from digital data supplied by Egis Engineers and shown as:

(1.2)





FURPHY STREET



ADDITIONAL NOTES:

The LOT dimensions and area shown hereon are subject to final field survey and also to the requirements of Council and any other authority which may have requirements under any relevant legislation

Final surface contours & retaining walls shown hereon have been supplied by Egis Engineers.

Compaction of any fill material placed on this site shall be completed to level one inspection and testing services in accordance with AS3798-2007.

Depth of fill values are calculated to the lower of the pre-development surface and the ground surface from Survey.

Copyright © Veris Australia Pty Ltd April 2024.

Dawn
Walloon - Stage 6D
For
ID_Land

IMPORTANT NOTES:
(These notes are an integral part of this plan)

This plan has been prepared for ID_LAND for the purposes of A Disclosure Plan Under the Land Sales Act 1984 (as amended).

It is not to be used by any other person or corporation or for any other purposes and is subject to the following limitations:

Please refer to the approved Development Application for conditions relating to the LOT and to approved Operational Works drawings for services location and possible easements.

THESE DESIGNS AND DRAWINGS ARE COPYRIGHT AND ARE NOT TO BE USED OR REPRODUCED WITHOUT THE WRITTEN PERMISSION OF VERIS

Data Sources	
Cadastral Boundaries	401905-LC01-(Z).dwg
Engineering Design	5721_2023_OW.pdf
Final Surface Contours	23-000032-6D-6F-design tin.12daz
Pre-development Surface	401184-DS01 A

Issue	Revisions	Date	KL/RCS	Drawn
A	Original	10.04.2024	KL/RCS	

Locality:	Walloon
Local Authority:	Ipswich City Council
Horizontal Meridian:	MGA Zone 56
Vertical Level Datum:	AHD
Scale:	1:250 @ A4
Designed:	EGIS ENGINEERS
Drawn:	KL 05/04/2024
Checked:	MJC 18/4/2024
Plot Date:	01 May, 2024
Computer File Ref: 401905-ST6D-DP(A).dwg	

DISCLOSURE PLAN
of Proposed LOT 560
being part of
Lot 4
on SP336196



veris

BRISBANE (07) 3686 4700 WHITSUNDAYS (07) 4945 6600

MACKAY (07) 4957 9700 CAIRNS (07) 4252 9400

veris.com.au
ACN 615 735 727
Veris Australia Pty Ltd

Drawing No 401905-DP 560 Issue A

LEGEND

Final surface contours based on A.H.D. datum at an interval of 0.25m, shown as: — 15.5 —

Where applicable, areas to be filled are shown as:

Depth of fill, in metres, shown as:- +0.5

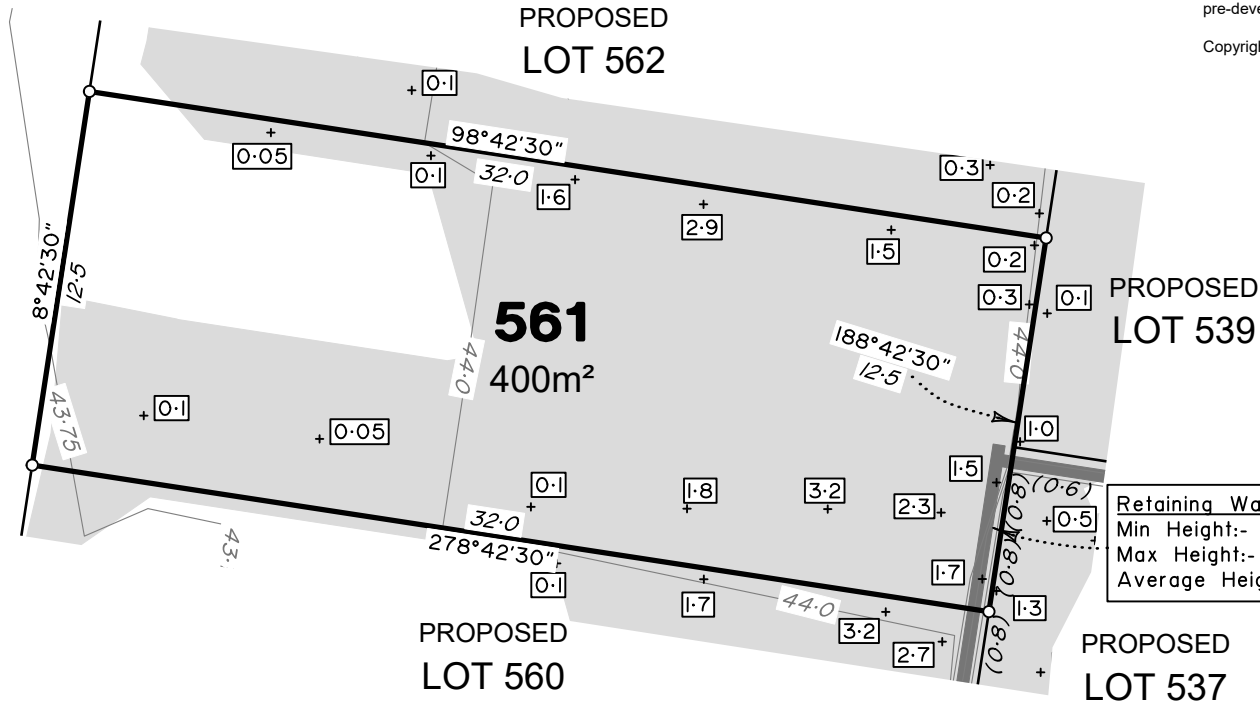
Retaining wall and retaining wall height, shown on the lower side of the wall, have been calculated from digital data supplied by Egis Engineers and shown as:

(1.2)





FURPHY STREET



ADDITIONAL NOTES:

The LOT dimensions and area shown hereon are subject to final field survey and also to the requirements of Council and any other authority which may have requirements under any relevant legislation

Final surface contours & retaining walls shown hereon have been supplied by Egis Engineers.

Compaction of any fill material placed on this site shall be completed to level one inspection and testing services in accordance with AS3798-2007.

Depth of fill values are calculated to the lower of the pre-development surface and the ground surface from Survey.

Copyright © Veris Australia Pty Ltd April 2024.

Dawn
Walloon - Stage 6D
For
ID_Land

IMPORTANT NOTES:
(These notes are an integral part of this plan)

This plan has been prepared for ID_LAND for the purposes of A Disclosure Plan Under the Land Sales Act 1984 (as amended).

It is not to be used by any other person or corporation or for any other purposes and is subject to the following limitations:

Please refer to the approved Development Application for conditions relating to the LOT and to approved Operational Works drawings for services location and possible easements.

THESE DESIGNS AND DRAWINGS ARE COPYRIGHT AND ARE NOT TO BE USED OR REPRODUCED WITHOUT THE WRITTEN PERMISSION OF VERIS

Data Sources	
Cadastral Boundaries	401905-LC01-(Z).dwg
Engineering Design	5721_2023_OW.pdf
Final Surface Contours	23-000032-6D-6F-design tin.12daz
Pre-development Surface	401184-DS01 A

Issue	Revisions	Date	Drawn
A	Original	10.04.2024	KL/RCS

Locality:	Walloon
Local Authority:	Ipswich City Council
Horizontal Meridian:	MGA Zone 56
Vertical Level Datum:	AHD
Scale:	1:250 @ A4
Designed:	EGIS ENGINEERS
Drawn:	KL 05/04/2024
Checked:	MJC 18/4/2024
Plot Date:	01 May, 2024
Computer File Ref:	401905-ST6D-DP(A).dwg

DISCLOSURE PLAN
of Proposed LOT 561
being part of
Lot 4
on SP336196



veris

BRISBANE (07) 3686 4700 WHITSUNDAYS (07) 4945 6600

MACKAY (07) 4957 9700 CAIRNS (07) 4252 9400

veris.com.au
ACN 615 735 727
Veris Australia Pty Ltd

Drawing No
401905-DP 561

Issue
A

LEGEND

Final surface contours based on A.H.D. datum at an interval of 0.25m, shown as: 15.5

Where applicable, areas to be filled are shown as:

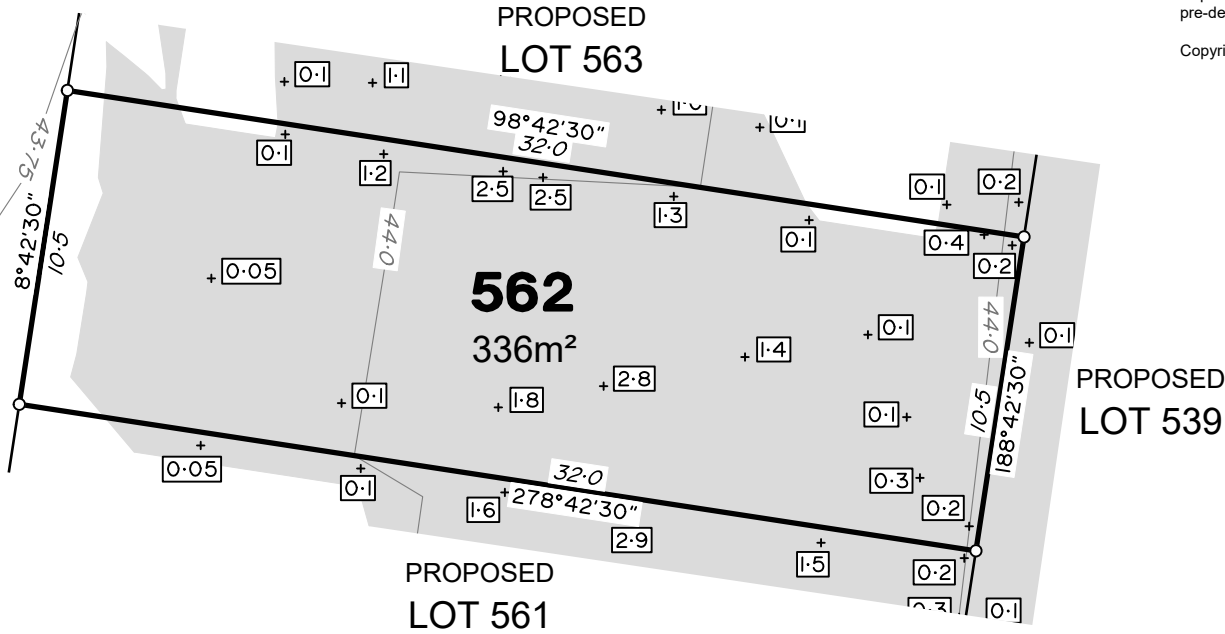
Depth of fill, in metres, shown as:- + 0.5

Retaining wall and retaining wall height, shown on the lower side of the wall, have been calculated from digital data supplied by Egis Engineers and shown as: (1.2)





FURPHY STREET



ADDITIONAL NOTES:

The LOT dimensions and area shown hereon are subject to final field survey and also to the requirements of Council and any other authority which may have requirements under any relevant legislation

Final surface contours & retaining walls shown hereon have been supplied by Egis Engineers.

Compaction of any fill material placed on this site shall be completed to level one inspection and testing services in accordance with AS3798-2007.

Depth of fill values are calculated to the lower of the pre-development surface and the ground surface from Survey.

Copyright © Veris Australia Pty Ltd April 2024.

Dawn
Walloon - Stage 6D
For
ID_Land

IMPORTANT NOTES:
(These notes are an integral part of this plan)

This plan has been prepared for ID_LAND for the purposes of A Disclosure Plan Under the Land Sales Act 1984 (as amended).

It is not to be used by any other person or corporation or for any other purposes and is subject to the following limitations:

Please refer to the approved Development Application for conditions relating to the LOT and to approved Operational Works drawings for services location and possible easements.

THESE DESIGNS AND DRAWINGS ARE COPYRIGHT AND ARE NOT TO BE USED OR REPRODUCED WITHOUT THE WRITTEN PERMISSION OF VERIS

Data Sources	
Cadastral Boundaries	401905-LC01-(Z).dwg
Engineering Design	5721_2023_OW.pdf
Final Surface Contours	23-000032-6D-6F-design tin.12daz
Pre-development Surface	401184-DS01 A

Issue	Revisions	Date	Drawn
A	Original	10.04.2024	KL/RCS

Locality:	Walloon
Local Authority:	Ipswich City Council
Horizontal Meridian:	MGA Zone 56
Vertical Level Datum:	AHD
Scale:	1:250 @ A4
Designed:	EGIS ENGINEERS
Drawn:	KL 05/04/2024
Checked:	MJC 18/4/2024
Plot Date:	01 May, 2024
Computer File Ref:	401905-ST6D-DP(A).dwg

DISCLOSURE PLAN
of Proposed LOT 562
being part of
Lot 4
on SP336196



veris

BRISBANE WHITSUNDAYS
(07) 3686 4700 (07) 4945 6600

MACKAY CAIRNS
(07) 4957 9700 (07) 4252 9400

veris.com.au
ACN 615 735 727
Veris Australia Pty Ltd

Drawing No Issue
401905-DP 562 A

LEGEND

Final surface contours based on A.H.D. datum at an interval of 0.25m, shown as: 15.5

Where applicable, areas to be filled are shown as:

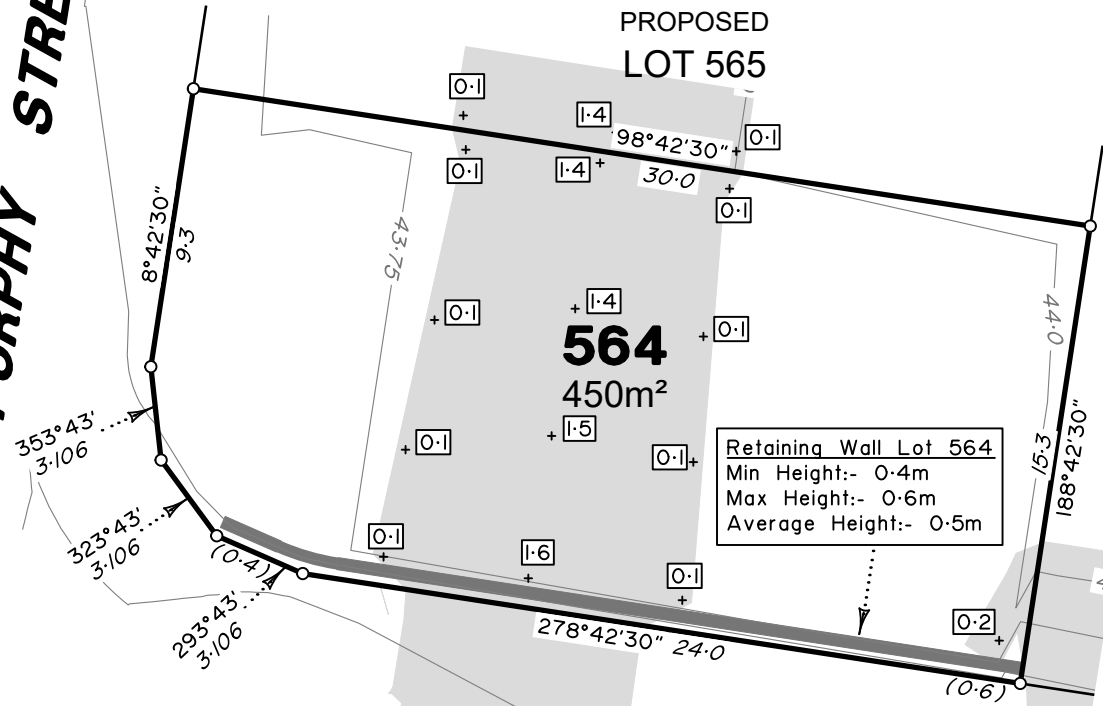
Depth of fill, in metres, shown as:- + 0.5

Retaining wall and retaining wall height, shown on the lower side of the wall, have been calculated from digital data supplied by Egis Engineers and shown as: (1.2)





FURPHY STREET



GILMORE STREET

ADDITIONAL NOTES:

The LOT dimensions and area shown hereon are subject to final field survey and also to the requirements of Council and any other authority which may have requirements under any relevant legislation

Final surface contours & retaining walls shown hereon have been supplied by Egis Engineers.

Compaction of any fill material placed on this site shall be completed to level one inspection and testing services in accordance with AS3798-2007.

Depth of fill values are calculated to the lower of the pre-development surface and the ground surface from Survey.

Copyright © Veris Australia Pty Ltd April 2024.

Dawn
Walloon - Stage 6D
For
ID_Land

IMPORTANT NOTES:
(These notes are an integral part of this plan)

This plan has been prepared for ID_LAND for the purposes of A Disclosure Plan Under the Land Sales Act 1984 (as amended).

It is not to be used by any other person or corporation or for any other purposes and is subject to the following limitations:

Please refer to the approved Development Application for conditions relating to the LOT and to approved Operational Works drawings for services location and possible easements.

THESE DESIGNS AND DRAWINGS ARE COPYRIGHT AND ARE NOT TO BE USED OR REPRODUCED WITHOUT THE WRITTEN PERMISSION OF VERIS

Data Sources	
Cadastral Boundaries	401905-LC01-(Z).dwg
Engineering Design	5721_2023_OW.pdf
Final Surface Contours	23-000032-6D-6F-design tin.12daz
Pre-development Surface	401184-DS01 A

Issue	Revisions	Date	KL/RCS	Drawn
A	Original	10.04.2024	KL/RCS	

Locality:	Walloon
Local Authority:	Ipswich City Council
Horizontal Meridian:	MGA Zone 56
Vertical Level Datum:	AHD
Scale:	1:250 @ A4
Designed:	EGIS ENGINEERS
Drawn:	KL 05/04/2024
Checked:	MJC 18/4/2024
Plot Date:	01 May, 2024
Computer File Ref:	401905-ST6D-DP(A).dwg

DISCLOSURE PLAN
of Proposed LOT 564
being part of
Lot 4
on SP336196



veris

BRISBANE (07) 3686 4700 WHITSUNDAYS (07) 4945 6600

MACKAY (07) 4957 9700 CAIRNS (07) 4252 9400

veris.com.au
ACN 615 735 727
Veris Australia Pty Ltd

Drawing No 401905-DP 564 Issue A

LEGEND

Final surface contours based on A.H.D. datum at an interval of 0.25m, shown as: 15.5

Where applicable, areas to be filled are shown as:

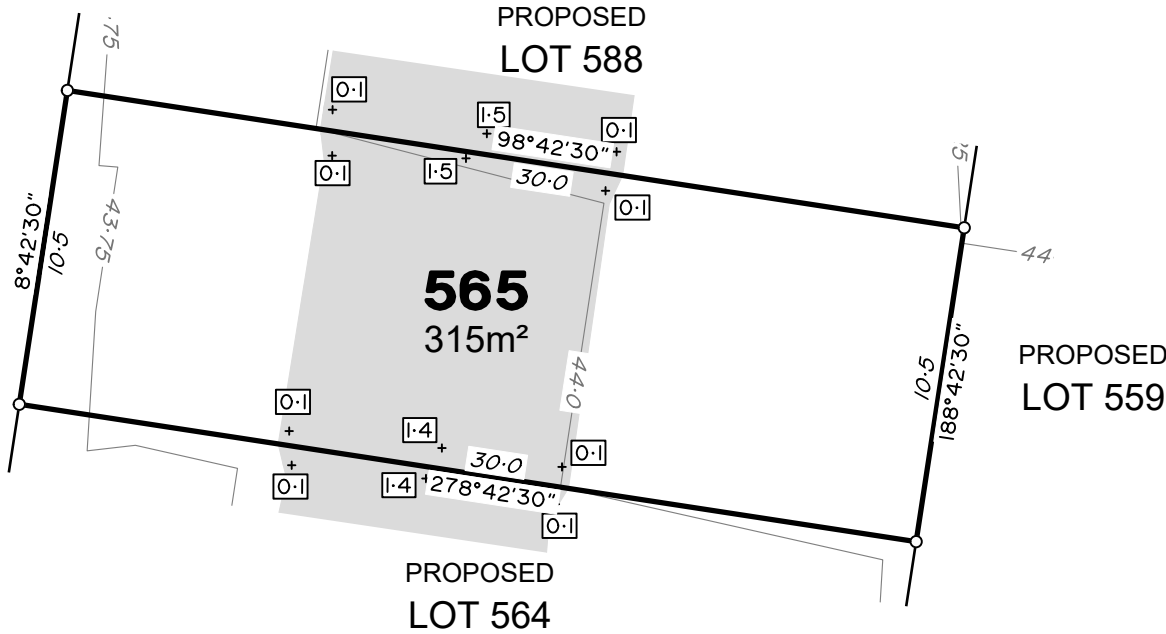
Depth of fill, in metres, shown as:- + 0.5

Retaining wall and retaining wall height, shown on the lower side of the wall, have been calculated from digital data supplied by Egis Engineers and shown as: (1.2)





FURPHY STREET



ADDITIONAL NOTES:

The LOT dimensions and area shown hereon are subject to final field survey and also to the requirements of Council and any other authority which may have requirements under any relevant legislation

Final surface contours & retaining walls shown hereon have been supplied by Egis Engineers.

Compaction of any fill material placed on this site shall be completed to level one inspection and testing services in accordance with AS3798-2007.

Depth of fill values are calculated to the lower of the pre-development surface and the ground surface from Survey.

Copyright © Veris Australia Pty Ltd April 2024.

Dawn
Walloon - Stage 6D
For
ID_Land

IMPORTANT NOTES:
(These notes are an integral part of this plan)

This plan has been prepared for ID_LAND for the purposes of A Disclosure Plan Under the Land Sales Act 1984 (as amended).

It is not to be used by any other person or corporation or for any other purpose and is subject to the following limitations:

Please refer to the approved Development Application for conditions relating to the LOT and to approved Operational Works drawings for services location and possible easements.

THESE DESIGNS AND DRAWINGS ARE COPYRIGHT AND ARE NOT TO BE USED OR REPRODUCED WITHOUT THE WRITTEN PERMISSION OF VERIS

Data Sources	
Cadastral Boundaries	401905-LC01-(Z).dwg
Engineering Design	5721_2023_OW.pdf
Final Surface Contours	23-000032-6D-6F-design tin.12daz
Pre-development Surface	401184-DS01 A

Issue	Revisions	Date	KL/RCS	Drawn
A	Original	10.04.2024	KL/RCS	

Locality:	Walloon
Local Authority:	Ipswich City Council
Horizontal Meridian:	MGA Zone 56
Vertical Level Datum:	AHD
Scale:	1:250 @ A4
Designed:	EGIS ENGINEERS
Drawn:	KL 05/04/2024
Checked:	MJC 18/4/2024
Plot Date:	01 May, 2024
Computer File Ref: 401905-ST6D-DP(A).dwg	

DISCLOSURE PLAN
of Proposed LOT 565
being part of
Lot 4
on SP336196



veris

BRISBANE (07) 3686 4700 WHITSUNDAYS (07) 4945 6600

MACKAY (07) 4957 9700 CAIRNS (07) 4252 9400

veris.com.au
ACN 615 735 727
Veris Australia Pty Ltd

Drawing No 401905-DP 565 Issue A

LEGEND

Final surface contours based on A.H.D. datum at an interval of 0.25m, shown as: — 15.5 —

Where applicable, areas to be filled are shown as:

Depth of fill, in metres, shown as: - + 0.5

Retaining wall and retaining wall height, shown on the lower side of the wall, have been calculated from digital data supplied by Egis Engineers and shown as:

(1.2)



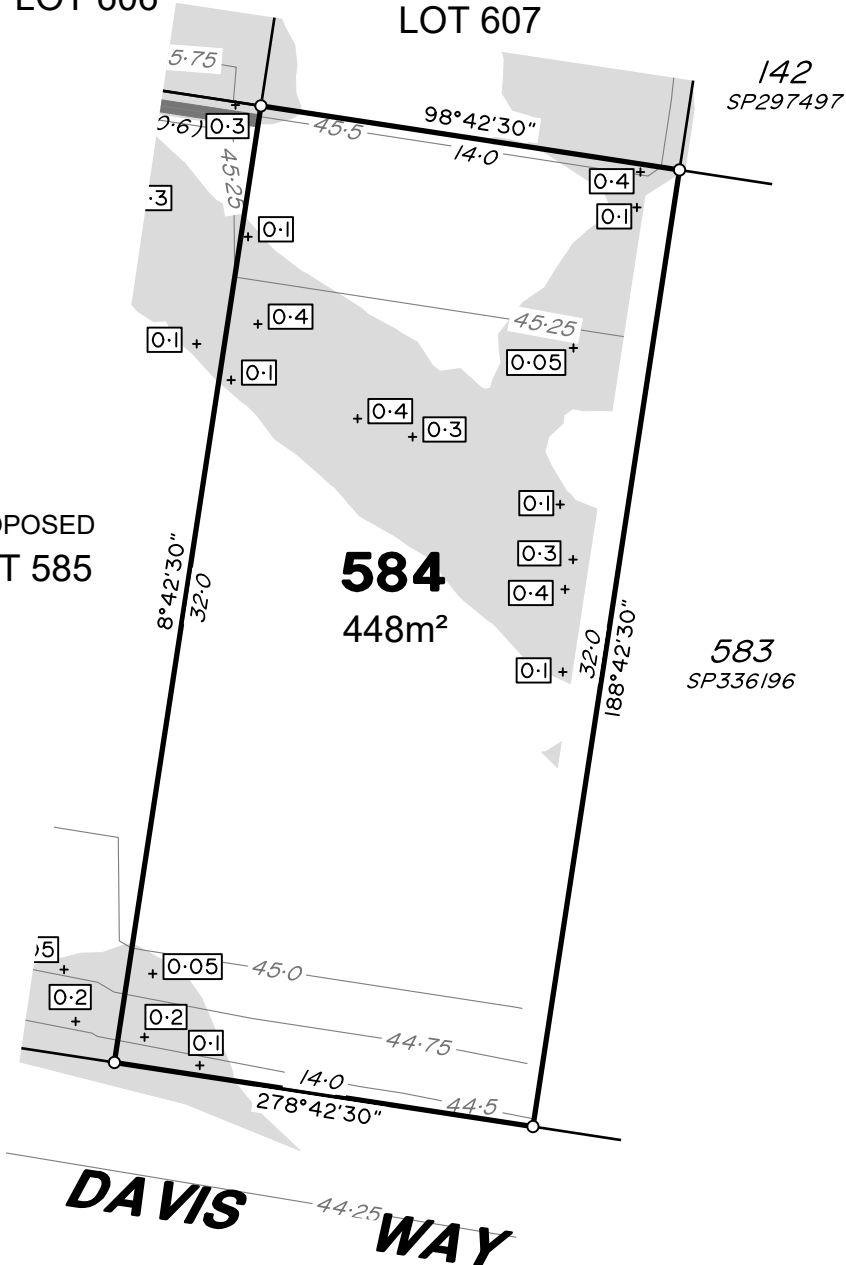


PROPOSED LOT 606

PROPOSED LOT 607

PROPOSED LOT 585

584
448m²



DAVIS WAY

142
SP297497

583
SP336196

ADDITIONAL NOTES:

The LOT dimensions and area shown hereon are subject to final field survey and also to the requirements of Council and any other authority which may have requirements under any relevant legislation

Final surface contours & retaining walls shown hereon have been supplied by Egis Engineers.

Compaction of any fill material placed on this site shall be completed to level one inspection and testing services in accordance with AS3798-2007.

Depth of fill values are calculated to the lower of the pre-development surface and the ground surface from Survey.

Copyright © Veris Australia Pty Ltd April 2024.

Dawn
Walloon - Stage 6D
For
ID_Land

IMPORTANT NOTES:
(These notes are an integral part of this plan)

This plan has been prepared for ID_LAND for the purposes of A Disclosure Plan Under the Land Sales Act 1984 (as amended).

It is not to be used by any other person or corporation or for any other purposes and is subject to the following limitations:

Please refer to the approved Development Application for conditions relating to the LOT and to approved Operational Works drawings for services location and possible easements.

THESE DESIGNS AND DRAWINGS ARE COPYRIGHT AND ARE NOT TO BE USED OR REPRODUCED WITHOUT THE WRITTEN PERMISSION OF VERIS

Data Sources	
Cadastral Boundaries	401905-LC01-(Z).dwg
Engineering Design	5721_2023_OW.pdf
Final Surface Contours	23-000032-6D-6F-design tin.12daz
Pre-development Surface	401184-DS01 A

Issue	Revisions	Date	Drawn
A	Original	10.04.2024	KL/RCS

Locality:	Walloon
Local Authority:	Ipswich City Council
Horizontal Meridian:	MGA Zone 56
Vertical Level Datum:	AHD
Scale:	1:250 @ A4
Designed:	EGIS ENGINEERS
Drawn:	KL 05/04/2024
Checked:	MJC 18/4/2024
Plot Date:	01 May, 2024
Computer File Ref: 401905-ST6D-DP(A).dwg	

DISCLOSURE PLAN
of Proposed LOT 584
being part of
Lot 4
on SP336196



veris

BRISBANE (07) 3686 4700 WHITSUNDAYS (07) 4945 6600

MACKAY (07) 4957 9700 CAIRNS (07) 4252 9400

veris.com.au
ACN 615 735 727
Veris Australia Pty Ltd

Drawing No
401905-DP 584
Issue
A

LEGEND

Final surface contours based on A.H.D. datum at an interval of 0.25m, shown as: 15.5

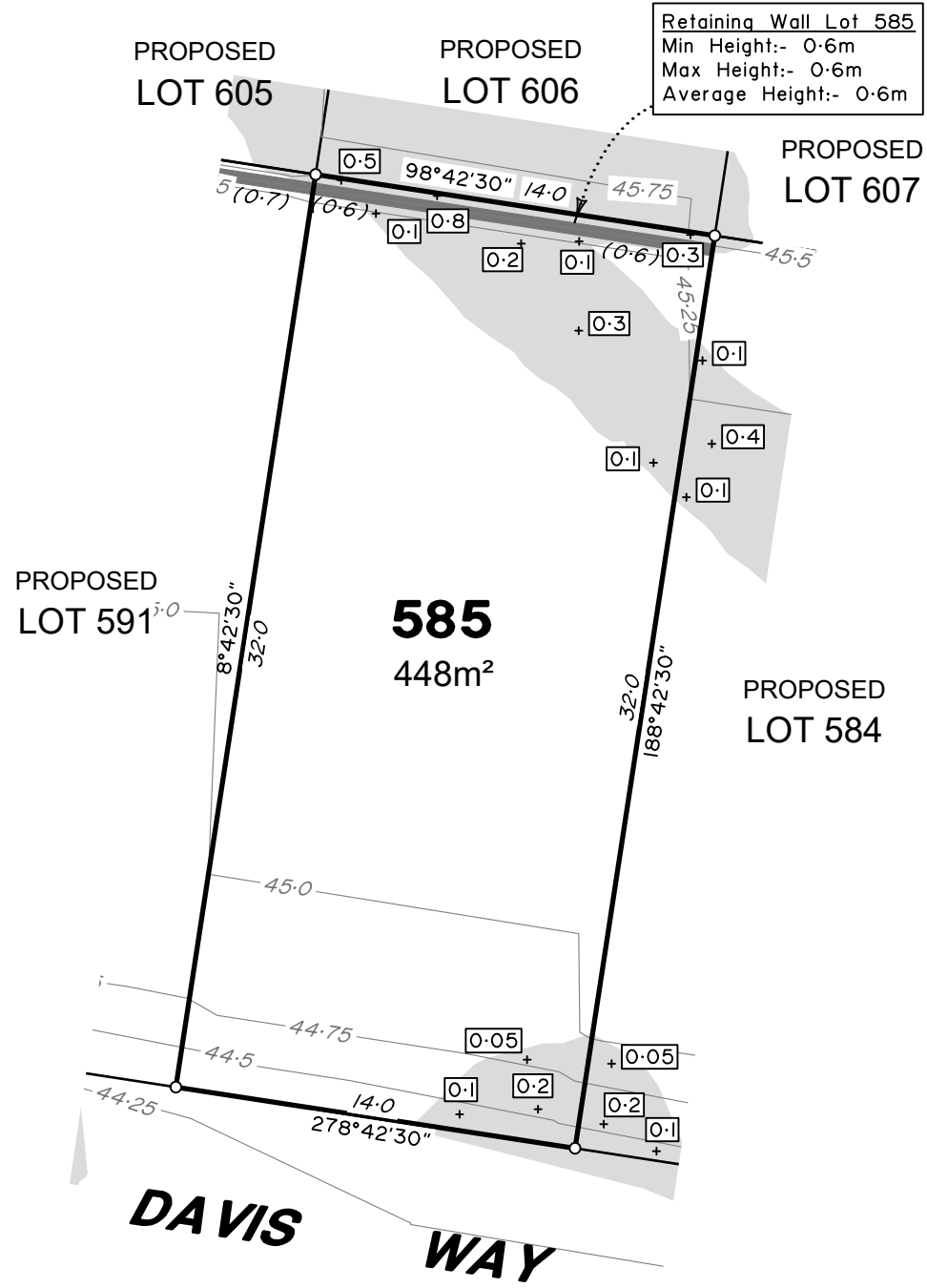
Where applicable, areas to be filled are shown as:

Depth of fill, in metres, shown as: - + 0.5

Retaining wall and retaining wall height, shown on the lower side of the wall, have been calculated from digital data supplied by Egis Engineers and shown as:

(1.2)





Retaining Wall Lot 585
 Min Height:- 0.6m
 Max Height:- 0.6m
 Average Height:- 0.6m

ADDITIONAL NOTES:
 The LOT dimensions and area shown hereon are subject to final field survey and also to the requirements of Council and any other authority which may have requirements under any relevant legislation

Final surface contours & retaining walls shown hereon have been supplied by Egis Engineers.

Compaction of any fill material placed on this site shall be completed to level one inspection and testing services in accordance with AS3798-2007.

Depth of fill values are calculated to the lower of the pre-development surface and the ground surface from Survey.

Copyright © Veris Australia Pty Ltd April 2024.

Dawn
 Walloon - Stage 6D
 For
 ID_Land

IMPORTANT NOTES:
 (These notes are an integral part of this plan)

This plan has been prepared for ID_LAND for the purposes of A Disclosure Plan Under the Land Sales Act 1984 (as amended). It is not to be used by any other person or corporation or for any other purposes and is subject to the following limitations:

Please refer to the approved Development Application for conditions relating to the LOT and to approved Operational Works drawings for services location and possible easements.

THESE DESIGNS AND DRAWINGS ARE COPYRIGHT AND ARE NOT TO BE USED OR REPRODUCED WITHOUT THE WRITTEN PERMISSION OF VERIS

Data Sources
 Cadastral Boundaries 401905-LC01-(Z).dwg
 Engineering Design 5721_2023_OW.pdf
 Final Surface Contours 23-000032-6D-6F-design tin.12daz
 Pre-development Surface 401184-DS01 A

Issue	Revisions	Date	Drawn
A	Original	10.04.2024	KL/RCS

Locality: Walloon
 Local Authority: Ipswich City Council
 Horizontal Meridian: MGA Zone 56
 Vertical Level Datum: AHD
 Scale: 1:250 @ A4
 Designed: EGIS ENGINEERS
 Drawn: KL 05/04/2024
 Checked: MJC 18/4/2024
 Plot Date: 01 May, 2024
 Computer File Ref: 401905-ST6D-DP(A).dwg

DISCLOSURE PLAN
 of Proposed LOT 585
 being part of
 Lot 4
 on SP336196



veris

BRISBANE (07) 3686 4700
 WHITSUNDAYS (07) 4945 6600
 MACKAY (07) 4957 9700
 CAIRNS (07) 4252 9400

veris.com.au
 ACN 615 735 727
 Veris Australia Pty Ltd

Drawing No 401905-DP 585 Issue A

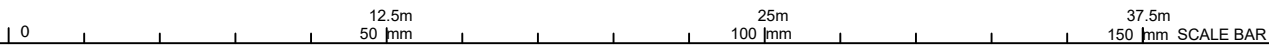
LEGEND

Final surface contours based on A.H.D. datum at an interval of 0.25m, shown as: 15.5

Where applicable, areas to be filled are shown as:

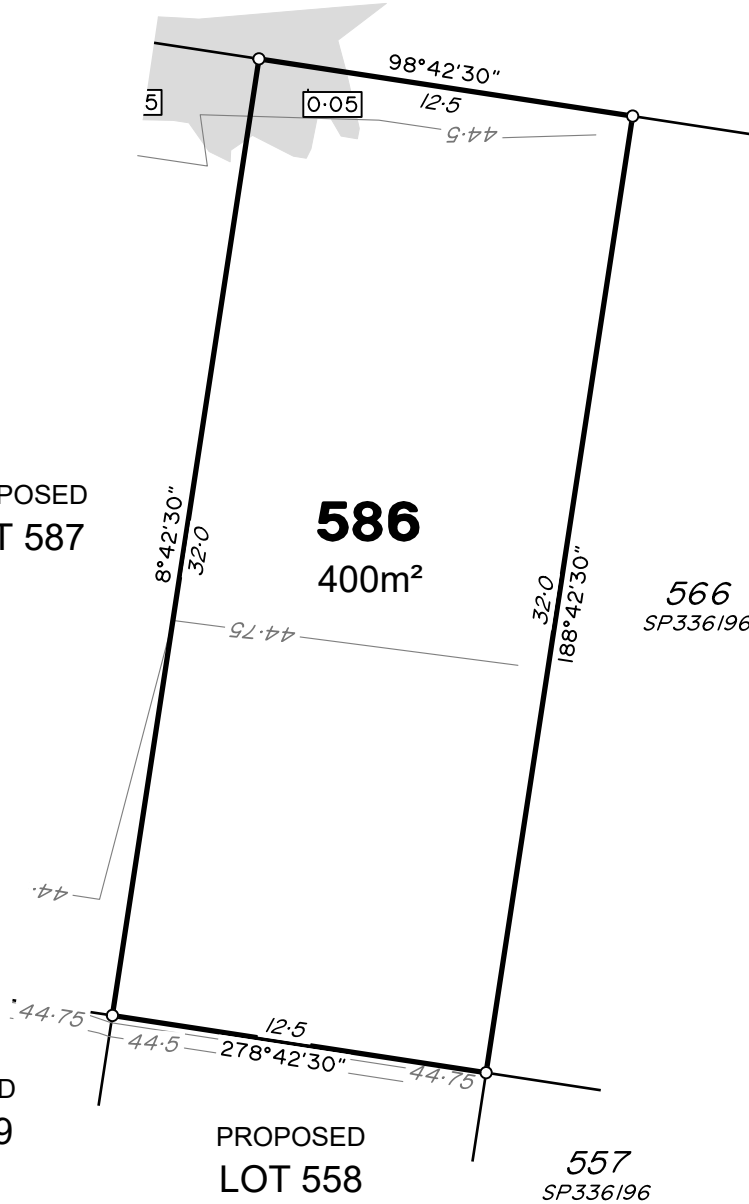
Depth of fill, in metres, shown as:- + 0.5

Retaining wall and retaining wall height, shown on the lower side of the wall, have been calculated from digital data supplied by Egis Engineers and shown as: (1.2)





DAVIS WAY



ADDITIONAL NOTES:

The LOT dimensions and area shown hereon are subject to final field survey and also to the requirements of Council and any other authority which may have requirements under any relevant legislation

Final surface contours & retaining walls shown hereon have been supplied by Egis Engineers.

Compaction of any fill material placed on this site shall be completed to level one inspection and testing services in accordance with AS3798-2007.

Depth of fill values are calculated to the lower of the pre-development surface and the ground surface from Survey.

Copyright © Veris Australia Pty Ltd April 2024.

Dawn
Walloon - Stage 6D
For
ID_Land

IMPORTANT NOTES:
(These notes are an integral part of this plan)

This plan has been prepared for ID_LAND for the purposes of A Disclosure Plan Under the Land Sales Act 1984 (as amended).

It is not to be used by any other person or corporation or for any other purposes and is subject to the following limitations:

Please refer to the approved Development Application for conditions relating to the LOT and to approved Operational Works drawings for services location and possible easements.

THESE DESIGNS AND DRAWINGS ARE COPYRIGHT AND ARE NOT TO BE USED OR REPRODUCED WITHOUT THE WRITTEN PERMISSION OF VERIS

Data Sources	
Cadastral Boundaries	401905-LC01-(Z).dwg
Engineering Design	5721_2023_OW.pdf
Final Surface Contours	23-000032-6D-6F-design tin.12daz
Pre-development Surface	401184-DS01 A

Issue	Revisions	Date	KL/RCS	Drawn
A	Original	10.04.2024	KL/RCS	

Locality:	Walloon
Local Authority:	Ipswich City Council
Horizontal Meridian:	MGA Zone 56
Vertical Level Datum:	AHD
Scale:	1:250 @ A4
Designed:	EGIS ENGINEERS
Drawn:	KL 05/04/2024
Checked:	MJC 18/4/2024
Plot Date:	01 May, 2024
Computer File Ref: 401905-ST6D-DP(A).dwg	

DISCLOSURE PLAN
of Proposed LOT 586
being part of
Lot 4
on SP336196



veris

BRISBANE (07) 3686 4700 WHITSUNDAYS (07) 4945 6600

MACKAY (07) 4957 9700 CAIRNS (07) 4252 9400

veris.com.au
ACN 615 735 727
Veris Australia Pty Ltd

Drawing No 401905-DP 586 Issue A

LEGEND

Final surface contours based on A.H.D. datum at an interval of 0.25m, shown as: 15.5

Where applicable, areas to be filled are shown as:

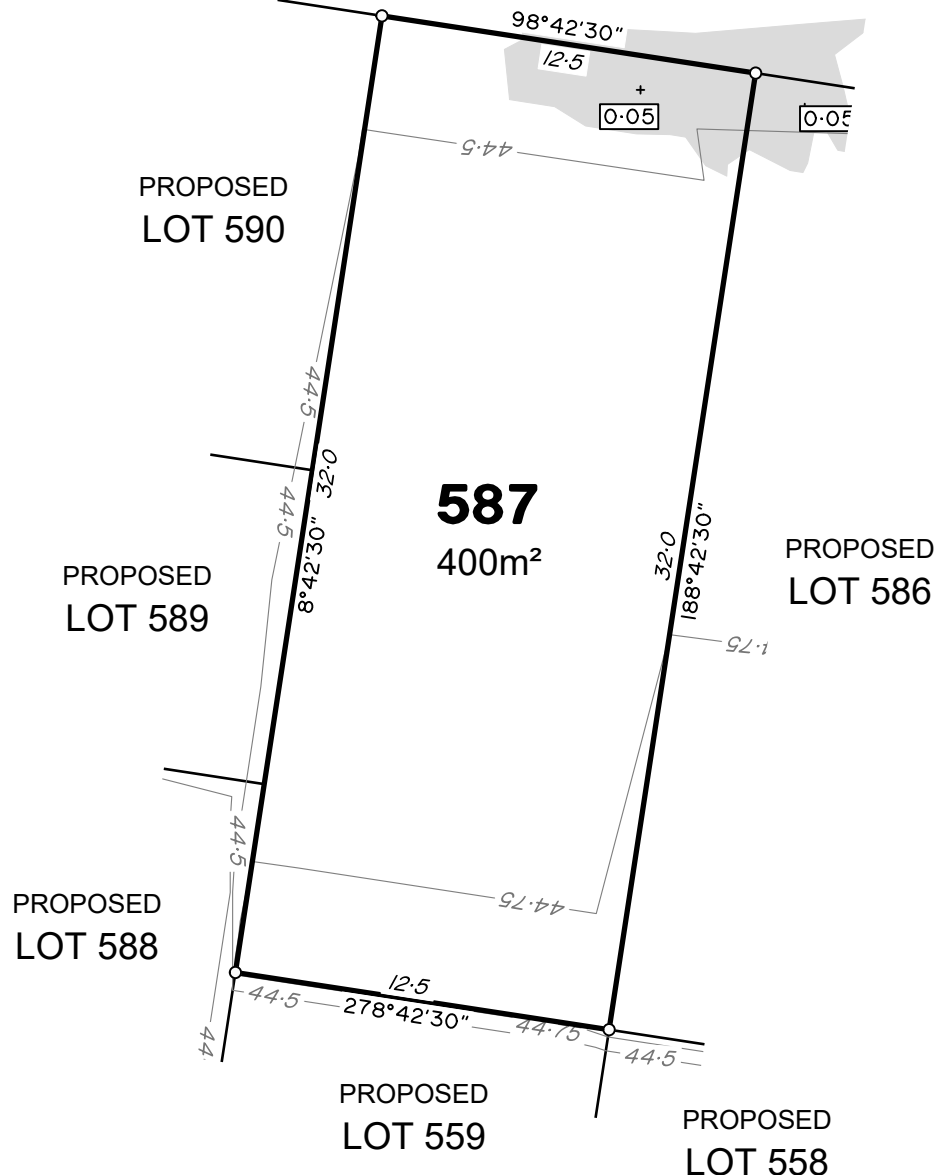
Depth of fill, in metres, shown as: - + 0.5

Retaining wall and retaining wall height, shown on the lower side of the wall, have been calculated from digital data supplied by Egis Engineers and shown as: (1.2)





DAVIS WAY



ADDITIONAL NOTES:

The LOT dimensions and area shown hereon are subject to final field survey and also to the requirements of Council and any other authority which may have requirements under any relevant legislation

Final surface contours & retaining walls shown hereon have been supplied by Egis Engineers.

Compaction of any fill material placed on this site shall be completed to level one inspection and testing services in accordance with AS3798-2007.

Depth of fill values are calculated to the lower of the pre-development surface and the ground surface from Survey.

Copyright © Veris Australia Pty Ltd April 2024.

Dawn
Walloon - Stage 6D
For
ID_Land

IMPORTANT NOTES:

(These notes are an integral part of this plan)

This plan has been prepared for ID_LAND for the purposes of A Disclosure Plan Under the Land Sales Act 1984 (as amended).

It is not to be used by any other person or corporation or for any other purposes and is subject to the following limitations:

Please refer to the approved Development Application for conditions relating to the LOT and to approved Operational Works drawings for services location and possible easements.

THESE DESIGNS AND DRAWINGS ARE COPYRIGHT AND ARE NOT TO BE USED OR REPRODUCED WITHOUT THE WRITTEN PERMISSION OF VERIS

Data Sources	
Cadastral Boundaries	401905-LC01-(Z).dwg
Engineering Design	5721_2023_OW.pdf
Final Surface Contours	23-000032-6D-6F-design tin.12daz
Pre-development Surface	401184-DS01 A

Issue	Revisions	Date	KL/RCS	Drawn
A	Original	10.04.2024	KL/RCS	

Locality:	Walloon
Local Authority:	Ipswich City Council
Horizontal Meridian:	MGA Zone 56
Vertical Level Datum:	AHD
Scale:	1:250 @ A4
Designed:	EGIS ENGINEERS
Drawn:	KL 05/04/2024
Checked:	MJC 18/4/2024
Plot Date:	01 May, 2024
Computer File Ref: 401905-ST6D-DP(A).dwg	

DISCLOSURE PLAN of Proposed LOT 587 being part of Lot 4 on SP336196



veris

BRISBANE (07) 3686 4700 WHITSUNDAYS (07) 4945 6600

MACKAY (07) 4957 9700 CAIRNS (07) 4252 9400

veris.com.au
ACN 615 735 727
Veris Australia Pty Ltd

Drawing No 401905-DP 587 Issue A

LEGEND

Final surface contours based on A.H.D. datum at an interval of 0.25m, shown as: 15.5

Where applicable, areas to be filled are shown as:

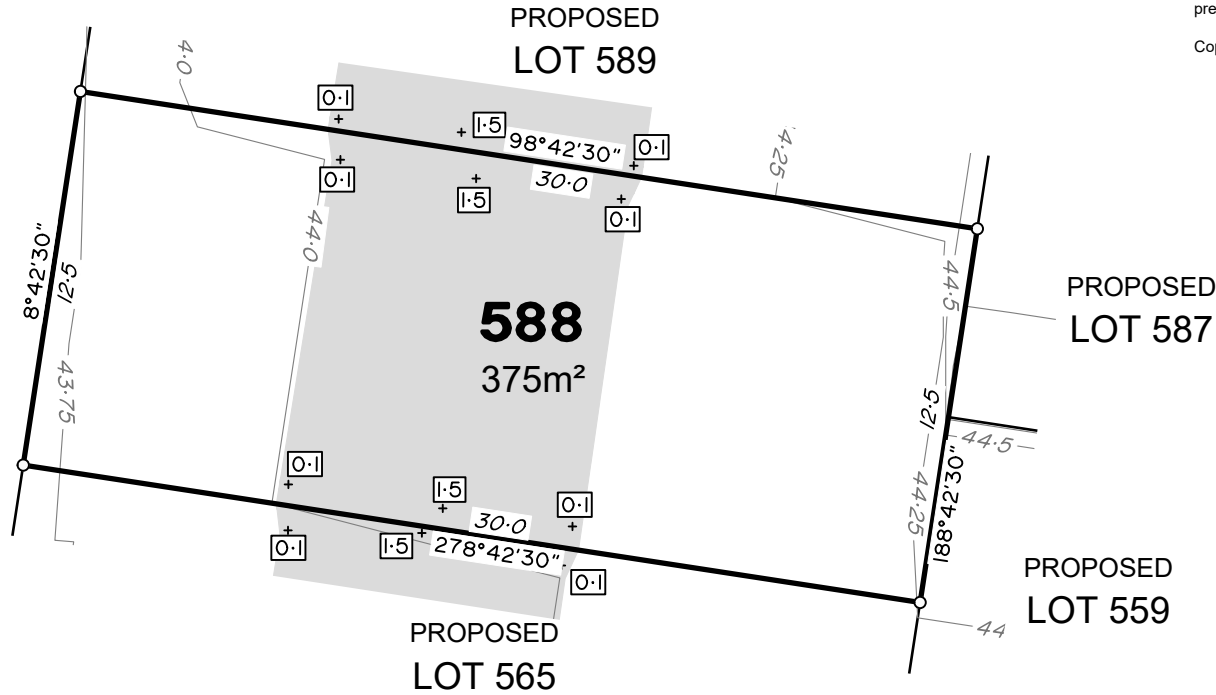
Depth of fill, in metres, shown as: - + 0.5

Retaining wall and retaining wall height, shown on the lower side of the wall, have been calculated from digital data supplied by Egis Engineers and shown as: (1.2)





FURPHY STREET



ADDITIONAL NOTES:

The LOT dimensions and area shown hereon are subject to final field survey and also to the requirements of Council and any other authority which may have requirements under any relevant legislation

Final surface contours & retaining walls shown hereon have been supplied by Egis Engineers.

Compaction of any fill material placed on this site shall be completed to level one inspection and testing services in accordance with AS3798-2007.

Depth of fill values are calculated to the lower of the pre-development surface and the ground surface from Survey.

Copyright © Veris Australia Pty Ltd April 2024.

Dawn
Walloon - Stage 6D
For
ID_Land

IMPORTANT NOTES:
(These notes are an integral part of this plan)

This plan has been prepared for ID_LAND for the purposes of A Disclosure Plan Under the Land Sales Act 1984 (as amended).

It is not to be used by any other person or corporation or for any other purpose and is subject to the following limitations:

Please refer to the approved Development Application for conditions relating to the LOT and to approved Operational Works drawings for services location and possible easements.

THESE DESIGNS AND DRAWINGS ARE COPYRIGHT AND ARE NOT TO BE USED OR REPRODUCED WITHOUT THE WRITTEN PERMISSION OF VERIS

Data Sources	
Cadastral Boundaries	401905-LC01-(Z).dwg
Engineering Design	5721_2023_OW.pdf
Final Surface Contours	23-000032-6D-6F-design tin.12daz
Pre-development Surface	401184-DS01 A

Issue	Revisions	Date	KL/RCS	Drawn
A	Original	10.04.2024	KL/RCS	

Locality:	Walloon
Local Authority:	Ipswich City Council
Horizontal Meridian:	MGA Zone 56
Vertical Level Datum:	AHD
Scale:	1:250 @ A4
Designed:	EGIS ENGINEERS
Drawn:	KL 05/04/2024
Checked:	MJC 18/4/2024
Plot Date:	01 May, 2024
Computer File Ref:	401905-ST6D-DP(A).dwg

DISCLOSURE PLAN
of Proposed LOT 588
being part of
Lot 4
on SP336196



veris

BRISBANE (07) 3686 4700 WHITSUNDAYS (07) 4945 6600

MACKAY (07) 4957 9700 CAIRNS (07) 4252 9400

veris.com.au
ACN 615 735 727
Veris Australia Pty Ltd

Drawing No 401905-DP 588 Issue A

LEGEND

Final surface contours based on A.H.D. datum at an interval of 0.25m, shown as: — 15.5 —

Where applicable, areas to be filled are shown as:

Depth of fill, in metres, shown as: - + 0.5

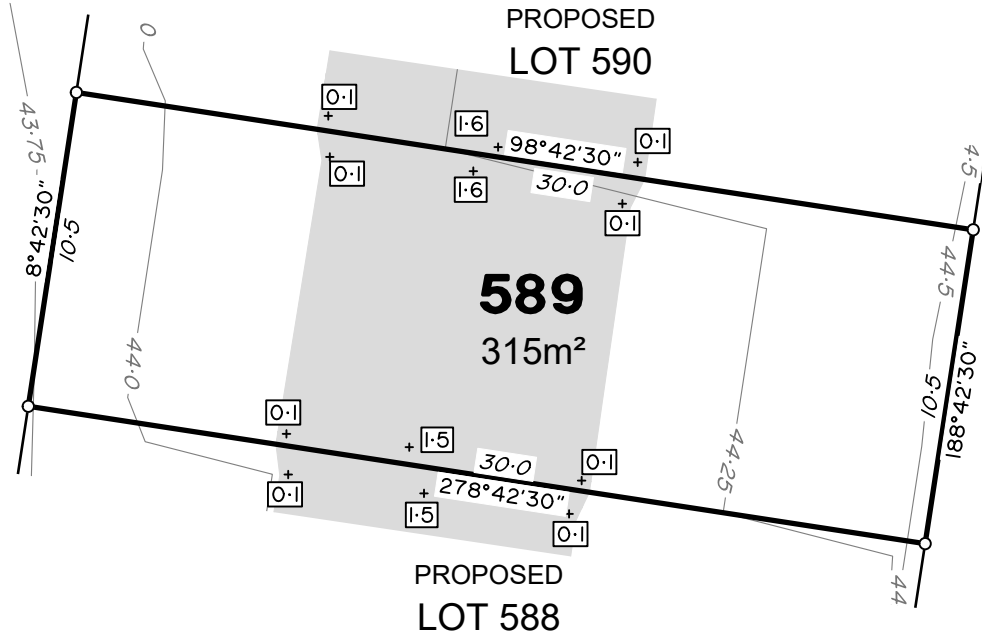
Retaining wall and retaining wall height, shown on the lower side of the wall, have been calculated from digital data supplied by Egis Engineers and shown as:

(1.2)





FURPHY STREET



ADDITIONAL NOTES:

The LOT dimensions and area shown hereon are subject to final field survey and also to the requirements of Council and any other authority which may have requirements under any relevant legislation

Final surface contours & retaining walls shown hereon have been supplied by Egis Engineers.

Compaction of any fill material placed on this site shall be completed to level one inspection and testing services in accordance with AS3798-2007.

Depth of fill values are calculated to the lower of the pre-development surface and the ground surface from Survey.

Copyright © Veris Australia Pty Ltd April 2024.

Dawn
Walloon - Stage 6D
For
ID_Land

IMPORTANT NOTES:
(These notes are an integral part of this plan)

This plan has been prepared for ID_LAND for the purposes of A Disclosure Plan Under the Land Sales Act 1984 (as amended).

It is not to be used by any other person or corporation or for any other purposes and is subject to the following limitations:

Please refer to the approved Development Application for conditions relating to the LOT and to approved Operational Works drawings for services location and possible easements.

THESE DESIGNS AND DRAWINGS ARE COPYRIGHT AND ARE NOT TO BE USED OR REPRODUCED WITHOUT THE WRITTEN PERMISSION OF VERIS

Data Sources	
Cadastral Boundaries	401905-LC01-(Z).dwg
Engineering Design	5721_2023_OW.pdf
Final Surface Contours	23-000032-6D-6F-design tin.12daz
Pre-development Surface	401184-DS01 A

Issue	Revisions	Date	KL/RCS	Drawn
A	Original	10.04.2024	KL/RCS	

Locality:	Walloon
Local Authority:	Ipswich City Council
Horizontal Meridian:	MGA Zone 56
Vertical Level Datum:	AHD
Scale:	1:250 @ A4
Designed:	EGIS ENGINEERS
Drawn:	KL 05/04/2024
Checked:	MJC 18/4/2024
Plot Date:	01 May, 2024
Computer File Ref: 401905-ST6D-DP(A).dwg	

DISCLOSURE PLAN
of Proposed LOT 589
being part of
Lot 4
on SP336196



veris

BRISBANE (07) 3686 4700 WHITSUNDAYS (07) 4945 6600

MACKAY (07) 4957 9700 CAIRNS (07) 4252 9400

veris.com.au
ACN 615 735 727
Veris Australia Pty Ltd

Drawing No 401905-DP 589 Issue A

LEGEND

Final surface contours based on A.H.D. datum at an interval of 0.25m, shown as: — 15.5 —

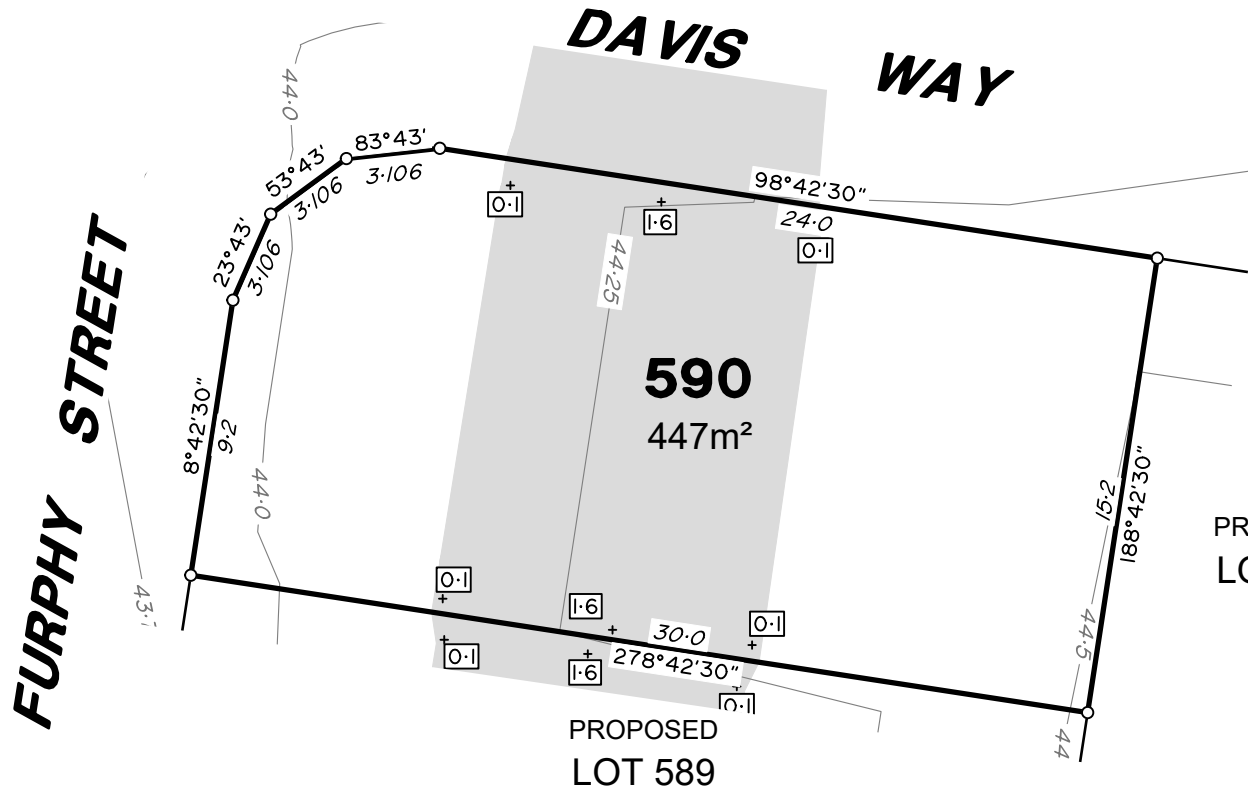
Where applicable, areas to be filled are shown as:

Depth of fill, in metres, shown as: - + 0.5

Retaining wall and retaining wall height, shown on the lower side of the wall, have been calculated from digital data supplied by Egis Engineers and shown as:

(1.2)



**ADDITIONAL NOTES:**

The LOT dimensions and area shown hereon are subject to final field survey and also to the requirements of Council and any other authority which may have requirements under any relevant legislation

Final surface contours & retaining walls shown hereon have been supplied by Egis Engineers.

Compaction of any fill material placed on this site shall be completed to level one inspection and testing services in accordance with AS3798-2007.

Depth of fill values are calculated to the lower of the pre-development surface and the ground surface from Survey.

Copyright © Veris Australia Pty Ltd April 2024.

Dawn
Walloon - Stage 6D
For
ID_Land

IMPORTANT NOTES:
(These notes are an integral part of this plan)

This plan has been prepared for ID_LAND for the purposes of A Disclosure Plan Under the Land Sales Act 1984 (as amended).

It is not to be used by any other person or corporation or for any other purposes and is subject to the following limitations:

Please refer to the approved Development Application for conditions relating to the LOT and to approved Operational Works drawings for services location and possible easements.

THESE DESIGNS AND DRAWINGS ARE COPYRIGHT AND ARE NOT TO BE USED OR REPRODUCED WITHOUT THE WRITTEN PERMISSION OF VERIS

Data Sources	
Cadastral Boundaries	401905-LC01-(Z).dwg
Engineering Design	5721_2023_OW.pdf
Final Surface Contours	23-000032-6D-6F-design tin.12daz
Pre-development Surface	401184-DS01 A

A	Original	10.04.2024	KL/RCS
Issue	Revisions	Date	Drawn

Locality:	Walloon
Local Authority:	Ipswich City Council
Horizontal Meridian:	MGA Zone 56
Vertical Level Datum:	AHD
Scale:	1:250 @ A4
Designed:	EGIS ENGINEERS
Drawn:	KL 05/04/2024
Checked:	MJC 18/4/2024
Plot Date:	01 May, 2024
Computer File Ref: 401905-ST6D-DP(A).dwg	

DISCLOSURE PLAN
of Proposed LOT 590
being part of
Lot 4
on SP336196



veris

BRISBANE WHITSUNDAYS
(07) 3686 4700 (07) 4945 6600

MACKAY CAIRNS
(07) 4957 9700 (07) 4252 9400

veris.com.au
ACN 615 735 727
Veris Australia Pty Ltd

Drawing No Issue
401905-DP 590 A

LEGEND

Final surface contours based on A.H.D. datum at an interval of 0.25m, shown as: 15.5

Where applicable, areas to be filled are shown as:

Depth of fill, in metres, shown as: - + 0.5

Retaining wall and retaining wall height, shown on the lower side of the wall, have been calculated from digital data supplied by Egis Engineers and shown as: (1.2)





PROPOSED
LOT 604

PROPOSED
LOT 605

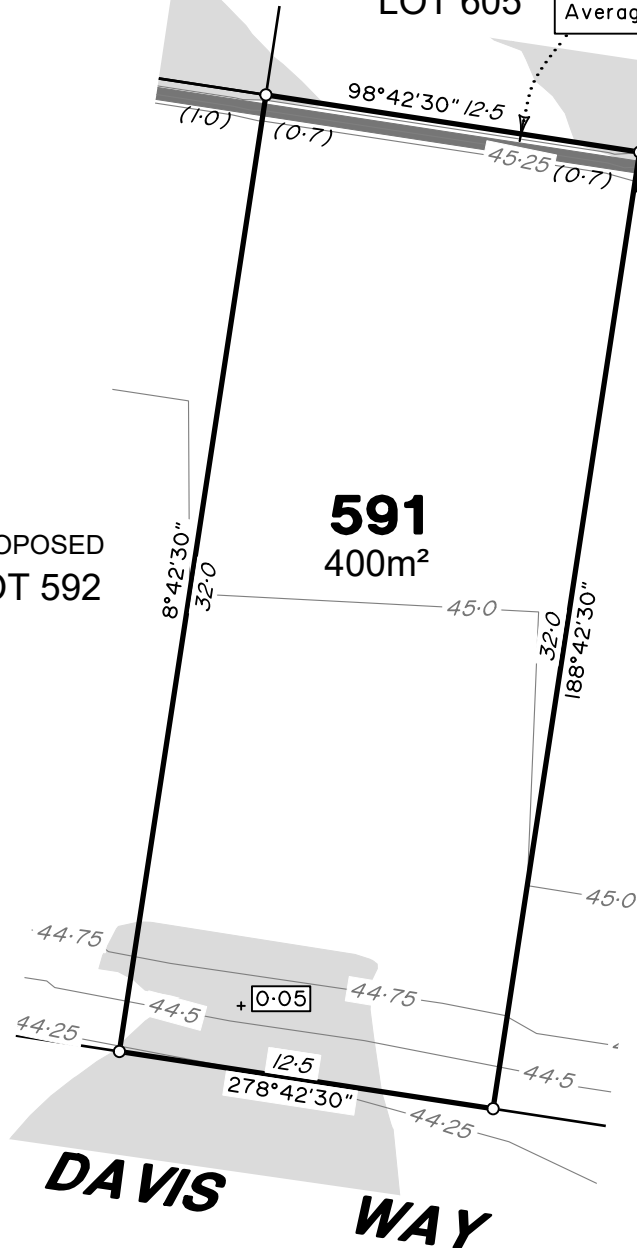
Retaining Wall Lot 591
Min Height:- 0.7m
Max Height:- 0.7m
Average Height:- 0.7m

PROPOSED
LOT 606

PROPOSED
LOT 592

591
400m²

PROPOSED
LOT 585



**DAVIS
WAY**

ADDITIONAL NOTES:

The LOT dimensions and area shown hereon are subject to final field survey and also to the requirements of Council and any other authority which may have requirements under any relevant legislation

Final surface contours & retaining walls shown hereon have been supplied by Egis Engineers.

Compaction of any fill material placed on this site shall be completed to level one inspection and testing services in accordance with AS3798-2007.

Depth of fill values are calculated to the lower of the pre-development surface and the ground surface from Survey.

Copyright © Veris Australia Pty Ltd April 2024.

Dawn
Walloon - Stage 6D
For
ID_Land

IMPORTANT NOTES:
(These notes are an integral part of this plan)

This plan has been prepared for ID_LAND for the purposes of A Disclosure Plan Under the Land Sales Act 1984 (as amended).

It is not to be used by any other person or corporation or for any other purposes and is subject to the following limitations:

Please refer to the approved Development Application for conditions relating to the LOT and to approved Operational Works drawings for services location and possible easements.

THESE DESIGNS AND DRAWINGS ARE COPYRIGHT AND ARE NOT TO BE USED OR REPRODUCED WITHOUT THE WRITTEN PERMISSION OF VERIS

Data Sources

Cadastral Boundaries	401905-LC01-(Z).dwg
Engineering Design	5721_2023_OW.pdf
Final Surface Contours	23-000032-6D-6F-design tin.12daz
Pre-development Surface	401184-DS01 A

Issue	Revisions	Date	KL/RCS	Drawn
A	Original	10.04.2024	KL/RCS	

Locality:	Walloon
Local Authority:	Ipswich City Council
Horizontal Meridian:	MGA Zone 56
Vertical Level Datum:	AHD
Scale:	1:250 @ A4
Designed:	EGIS ENGINEERS
Drawn:	KL 05/04/2024
Checked:	MJC 18/4/2024
Plot Date:	01 May, 2024
Computer File Ref:	401905-ST6D-DP(A).dwg

DISCLOSURE PLAN
of Proposed LOT 591
being part of
Lot 4
on SP336196



veris

BRISBANE (07) 3686 4700 WHITSUNDAYS (07) 4945 6600

MACKAY (07) 4957 9700 CAIRNS (07) 4252 9400

veris.com.au
ACN 615 735 727
Veris Australia Pty Ltd

Drawing No
401905-DP 591
Issue
A

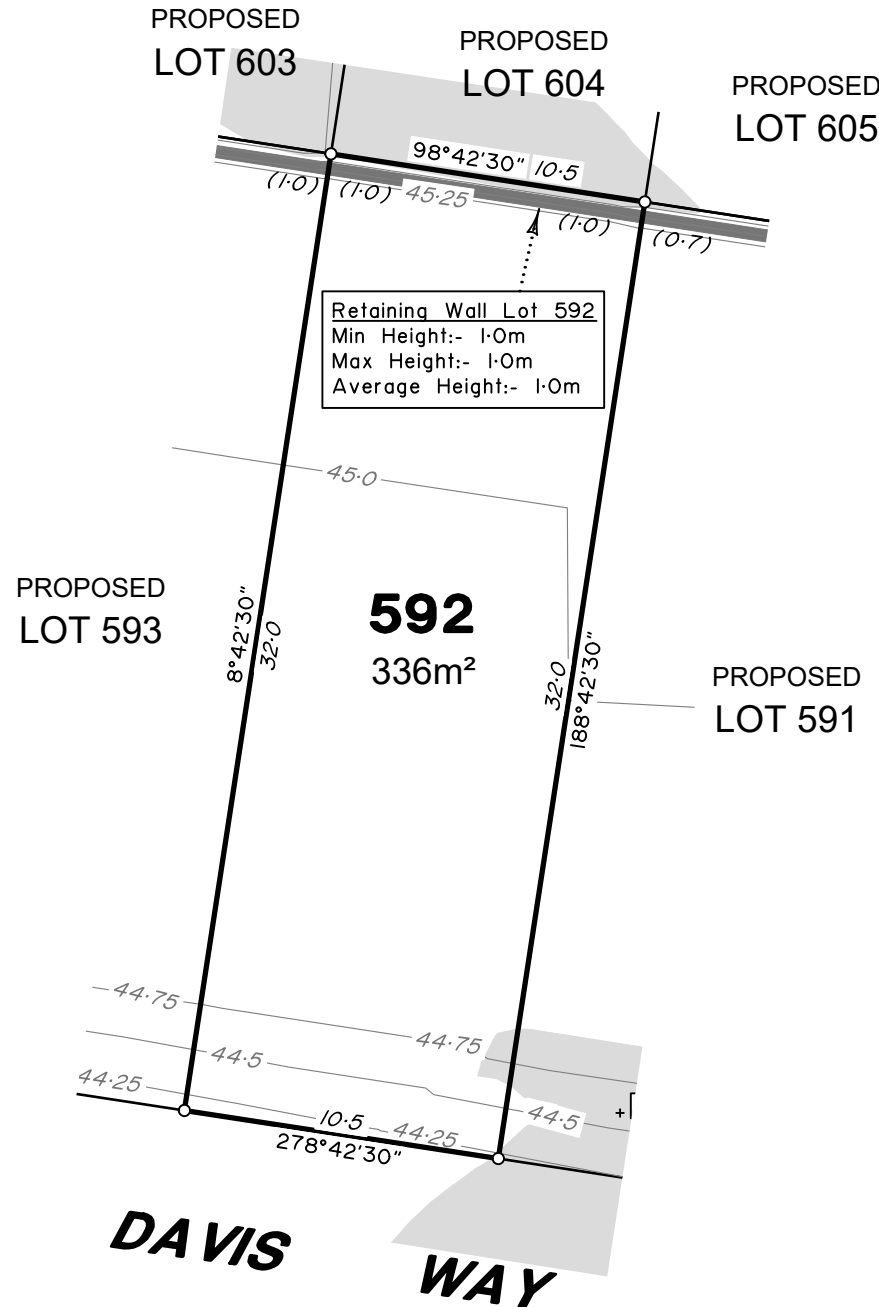
LEGEND

Final surface contours based on A.H.D. datum at an interval of 0.25m, shown as: 15.5

Where applicable, areas to be filled are shown as:

Depth of fill, in metres, shown as:- + 0.5

Retaining wall and retaining wall height, shown on the lower side of the wall, have been calculated from digital data supplied by Egis Engineers and shown as: (1.2)



Retaining Wall Lot 592
 Min Height:- 1.0m
 Max Height:- 1.0m
 Average Height:- 1.0m

ADDITIONAL NOTES:

The LOT dimensions and area shown hereon are subject to final field survey and also to the requirements of Council and any other authority which may have requirements under any relevant legislation

Final surface contours & retaining walls shown hereon have been supplied by Egis Engineers.

Compaction of any fill material placed on this site shall be completed to level one inspection and testing services in accordance with AS3798-2007.

Depth of fill values are calculated to the lower of the pre-development surface and the ground surface from Survey.

Copyright © Veris Australia Pty Ltd April 2024.

Dawn
 Walloon - Stage 6D
 For
 ID_Land

IMPORTANT NOTES:
 (These notes are an integral part of this plan)

This plan has been prepared for ID_LAND for the purposes of A Disclosure Plan Under the Land Sales Act 1984 (as amended).

It is not to be used by any other person or corporation or for any other purposes and is subject to the following limitations:

Please refer to the approved Development Application for conditions relating to the LOT and to approved Operational Works drawings for services location and possible easements.

THESE DESIGNS AND DRAWINGS ARE COPYRIGHT AND ARE NOT TO BE USED OR REPRODUCED WITHOUT THE WRITTEN PERMISSION OF VERIS

Data Sources

Cadastral Boundaries	401905-LC01-(Z).dwg
Engineering Design	5721_2023_OW.pdf
Final Surface Contours	23-000032-6D-6F-design tin.12daz
Pre-development Surface	401184-DS01 A

A	Original	10.04.2024	KL/RCS
Issue	Revisions	Date	Drawn

Locality:	Walloon
Local Authority:	Ipswich City Council
Horizontal Meridian:	MGA Zone 56
Vertical Level Datum:	AHD
Scale:	1:250 @ A4
Designed:	EGIS ENGINEERS
Drawn:	KL 05/04/2024
Checked:	MJC 18/4/2024
Plot Date:	01 May, 2024
Computer File Ref: 401905-ST6D-DP(A).dwg	

DISCLOSURE PLAN
 of Proposed LOT 592
 being part of
 Lot 4
 on SP336196



veris

BRISBANE (07) 3686 4700 WHITSUNDAYS (07) 4945 6600

MACKAY (07) 4957 9700 CAIRNS (07) 4252 9400

veris.com.au
 ACN 615 735 727
 Veris Australia Pty Ltd

Drawing No 401905-DP 592 Issue A

LEGEND

Final surface contours based on A.H.D. datum at an interval of 0.25m, shown as: — 15.5 —

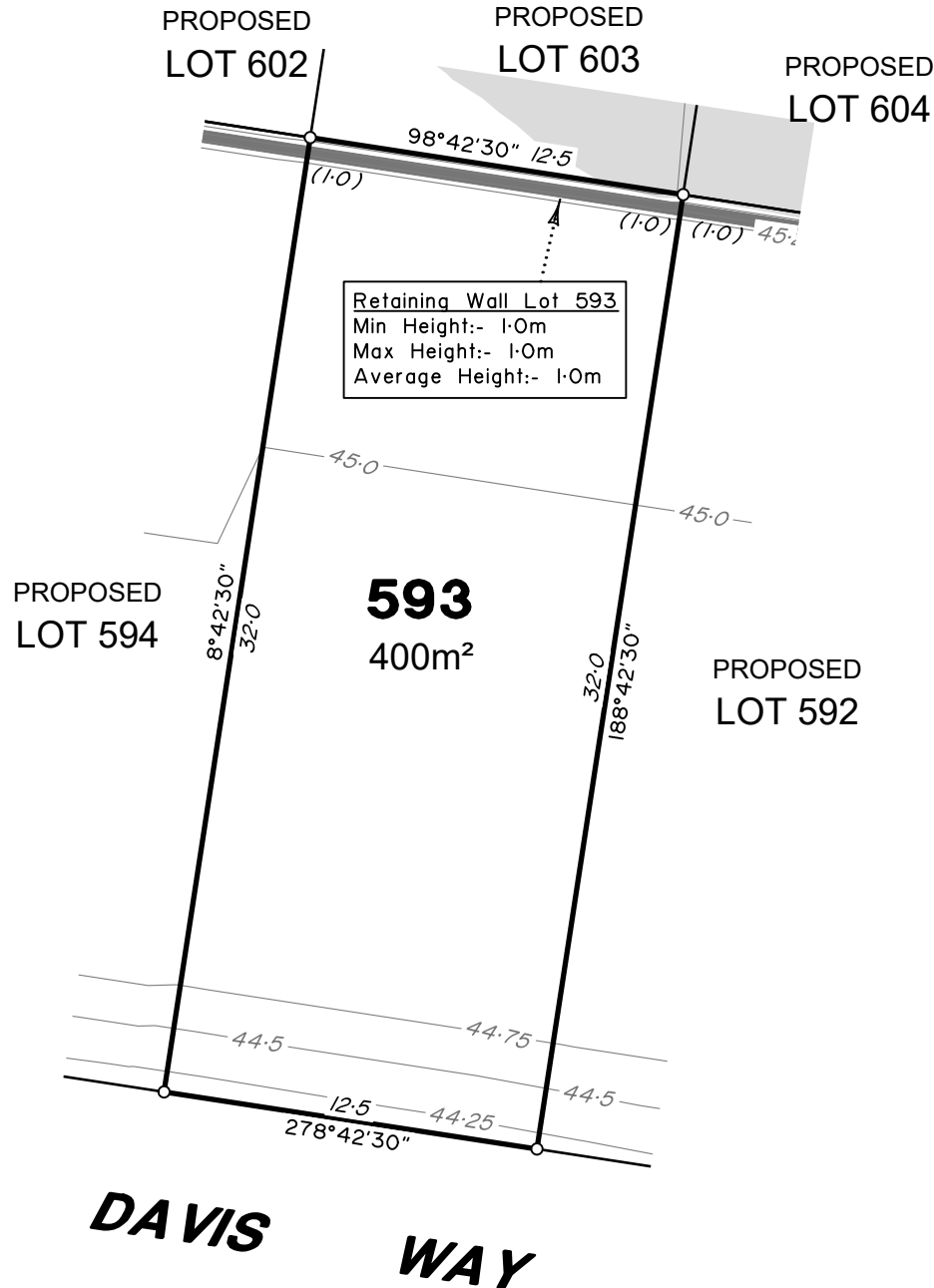
Where applicable, areas to be filled are shown as:

Depth of fill, in metres, shown as:- + 0.5

Retaining wall and retaining wall height, shown on the lower side of the wall, have been calculated from digital data supplied by Egis Engineers and shown as:

(1.2)





ADDITIONAL NOTES:

The LOT dimensions and area shown hereon are subject to final field survey and also to the requirements of Council and any other authority which may have requirements under any relevant legislation

Final surface contours & retaining walls shown hereon have been supplied by Egis Engineers.

Compaction of any fill material placed on this site shall be completed to level one inspection and testing services in accordance with AS3798-2007.

Depth of fill values are calculated to the lower of the pre-development surface and the ground surface from Survey.

Copyright © Veris Australia Pty Ltd April 2024.

Dawn
Walloon - Stage 6D
For
ID_Land

IMPORTANT NOTES:
(These notes are an integral part of this plan)

This plan has been prepared for ID_LAND for the purposes of A Disclosure Plan Under the Land Sales Act 1984 (as amended).

It is not to be used by any other person or corporation or for any other purposes and is subject to the following limitations:

Please refer to the approved Development Application for conditions relating to the LOT and to approved Operational Works drawings for services location and possible easements.

THESE DESIGNS AND DRAWINGS ARE COPYRIGHT AND ARE NOT TO BE USED OR REPRODUCED WITHOUT THE WRITTEN PERMISSION OF VERIS

Data Sources

Cadastral Boundaries	401905-LC01-(Z).dwg
Engineering Design	5721_2023_OW.pdf
Final Surface Contours	23-000032-6D-6F-design tin.12daz
Pre-development Surface	401184-DS01 A

Issue	Revisions	Date	KL/RCS	Drawn
A	Original	10.04.2024	KL/RCS	

Locality:	Walloon
Local Authority:	Ipswich City Council
Horizontal Meridian:	MGA Zone 56
Vertical Level Datum:	AHD
Scale:	1:250 @ A4
Designed:	EGIS ENGINEERS
Drawn:	KL 05/04/2024
Checked:	MJC 18/4/2024
Plot Date:	01 May, 2024
Computer File Ref:	401905-ST6D-DP(A).dwg

DISCLOSURE PLAN
of Proposed LOT 593
being part of
Lot 4
on SP336196



veris

BRISBANE (07) 3686 4700 WHITSUNDAYS (07) 4945 6600

MACKAY (07) 4957 9700 CAIRNS (07) 4252 9400

veris.com.au
ACN 615 735 727
Veris Australia Pty Ltd

Drawing No 401905-DP 593 Issue A

LEGEND

Final surface contours based on A.H.D. datum at an interval of 0.25m, shown as: — 15.5 —

Where applicable, areas to be filled are shown as:

Depth of fill, in metres, shown as:- + 0.5

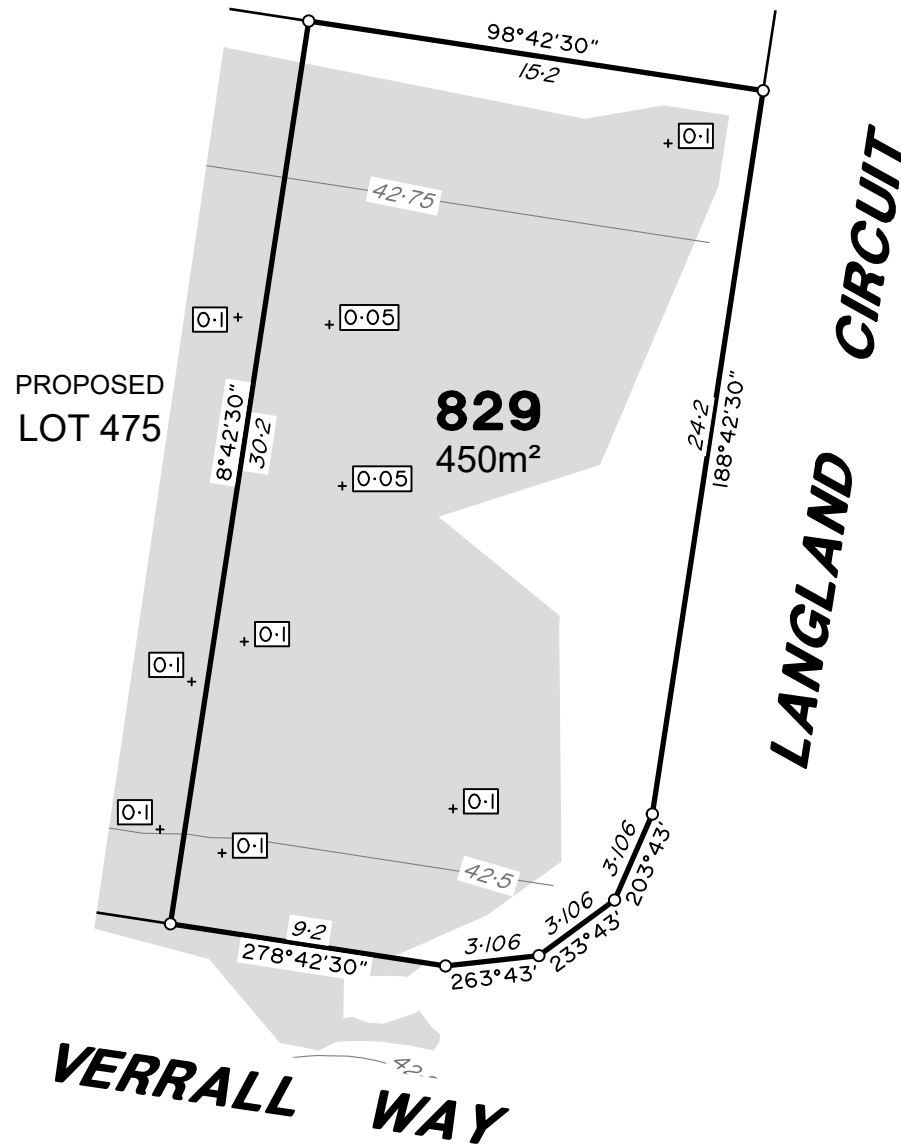
Retaining wall and retaining wall height, shown on the lower side of the wall, have been calculated from digital data supplied by Egis Engineers and shown as:

(1.2)





474
SP332695



ADDITIONAL NOTES:

The LOT dimensions and area shown hereon are subject to final field survey and also to the requirements of Council and any other authority which may have requirements under any relevant legislation

Final surface contours & retaining walls shown hereon have been supplied by Egis Engineers.

Compaction of any fill material placed on this site shall be completed to level one inspection and testing services in accordance with AS3798-2007.

Depth of fill values are calculated to the lower of the pre-development surface and the ground surface from Survey.

Copyright © Veris Australia Pty Ltd April 2024.

Dawn
Walloon - Stage 6D
For
ID_Land

IMPORTANT NOTES:
(These notes are an integral part of this plan)

This plan has been prepared for ID_LAND for the purposes of A Disclosure Plan Under the Land Sales Act 1984 (as amended).

It is not to be used by any other person or corporation or for any other purposes and is subject to the following limitations:

Please refer to the approved Development Application for conditions relating to the LOT and to approved Operational Works drawings for services location and possible easements.

THESE DESIGNS AND DRAWINGS ARE COPYRIGHT AND ARE NOT TO BE USED OR REPRODUCED WITHOUT THE WRITTEN PERMISSION OF VERIS

Data Sources

Cadastral Boundaries	401905-LC01-(Z).dwg
Engineering Design	5721_2023_OW.pdf
Final Surface Contours	23-000032-6D-6F-design tin.12daz
Pre-development Surface	401184-DS01 A

Issue	Revisions	Date	KL/RCS	Drawn
A	Original	10.04.2024	KL/RCS	

Locality:	Walloon
Local Authority:	Ipswich City Council
Horizontal Meridian:	MGA Zone 56
Vertical Level Datum:	AHD
Scale:	1:250 @ A4
Designed:	EGIS ENGINEERS
Drawn:	KL 05/04/2024
Checked:	MJC 18/4/2024
Plot Date:	01 May, 2024
Computer File Ref: 401905-ST6D-DP(A).dwg	

DISCLOSURE PLAN
of Proposed LOT 829
being part of
Lot 4
on SP336196



veris

BRISBANE (07) 3686 4700 WHITSUNDAYS (07) 4945 6600

MACKAY (07) 4957 9700 CAIRNS (07) 4252 9400

veris.com.au
ACN 615 735 727
Veris Australia Pty Ltd

Drawing No 401905-DP 829 Issue A

LEGEND

Final surface contours based on A.H.D. datum at an interval of 0.25m, shown as: 15.5

Where applicable, areas to be filled are shown as:

Depth of fill, in metres, shown as:- + 0.5

Retaining wall and retaining wall height, shown on the lower side of the wall, have been calculated from digital data supplied by Egis Engineers and shown as:

(1.2)

