

REGISTERED SURVEYOR'S CERTIFICATION

We, **Veris Australia Pty Ltd**, hereby certify that the vertical and horizontal locations and dimensions shown on this plan are a true and correct record and were located by survey.

Registered Surveyor (sig.) **6448** Reg. Surveyor No. Date **21/08/2024**

ENGINEER'S CERTIFICATION

I, _____, hereby certify that:

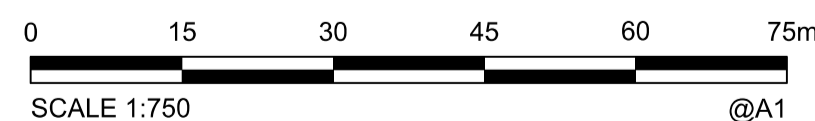
- The information contained in this drawing / document is in compliance with approved drawings and design.
- The new water and sewerage works defined by this drawing have been designed and constructed in accordance with the SEQ Code.
- This represents an accurate record of as-constructed works.
- I accept responsibility for the information contained in this drawing / document.

RPEQ (signature) _____ RPEQ No. _____ Date: _____



LEGEND

- NEW HYDRANT
 - NEW SLUICE VALVE
 - NEW TEE
 - NEW END CAP
 - NEW TAPER
 - NEW WATER SERVICE CONDUIT (ø100 PVC-0 PN16)
 - NEW WATER SERVICE (ø25 PE PN16)
 - NEW WATER METER
 - NEW WATER HOUSE CONNECTION (TAPPING BAND)
 - NEW WATER MAIN (ø180 PE-100 PN16)
 - WATER MARKER
- ① ø180 STOP VALVE
 - ② ø180 FIRE HYDRANT
 - ③ ø180 x ø180 TEE
 - ④ ø180 DEAD END CAP
 - ⑤ ø180 11.25° BEND
 - ⑥ ø180 22.5° BEND
 - ⑦ ø180 45° BEND
 - ⑧ ø180 90° BEND



A1

REV NO	DATE	REVISION PURPOSE / DESCRIPTION	DRAWN	RPEQ	RPEQ No	APPROVED	INITIALS	DATE
D	15/07/2024	PROGRESS PLOT AS CON WATER						
C	28/05/2024	PROGRESS PLOT AS CON WATER	JMc			DRAWN	JMc	12/02/2024
B	03/05/2024	PROGRESS PLOT AS CON WATER	JMc			CHECKED		
A	12/02/2024	PROGRESS PLOT AS CON WATER	JMc			APPROVED		

veris

BRISBANE (07) 3695 9700
WHITSUNDAYS (07) 4945 9500
MACKAY (07) 4927 9700
CAIRNS (07) 4002 9400

veris.com.au
ACN 615 735 727
Veris Australia Pty Ltd



**DAWN WALLOON
NEILSON WAY WALLOON**

**STAGE 6F
AS CONSTRUCTED WATER**

DRAWING STATUS	
AS CONSTRUCTED	
SHEET 1 OF 3 SHEETS	
DRAWING NO. 401905-6F-AW01	REV. D

REGISTERED SURVEYOR'S CERTIFICATION

We, **Veris Australia Pty Ltd**, hereby certify that the vertical and horizontal locations and dimensions shown on this plan are a true and correct record and were located by survey.

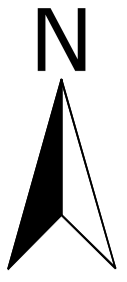
Registered Surveyor (sig.) *[Signature]* Reg. Surveyor No. **6448** Date **21/08/2024**

ENGINEER'S CERTIFICATION

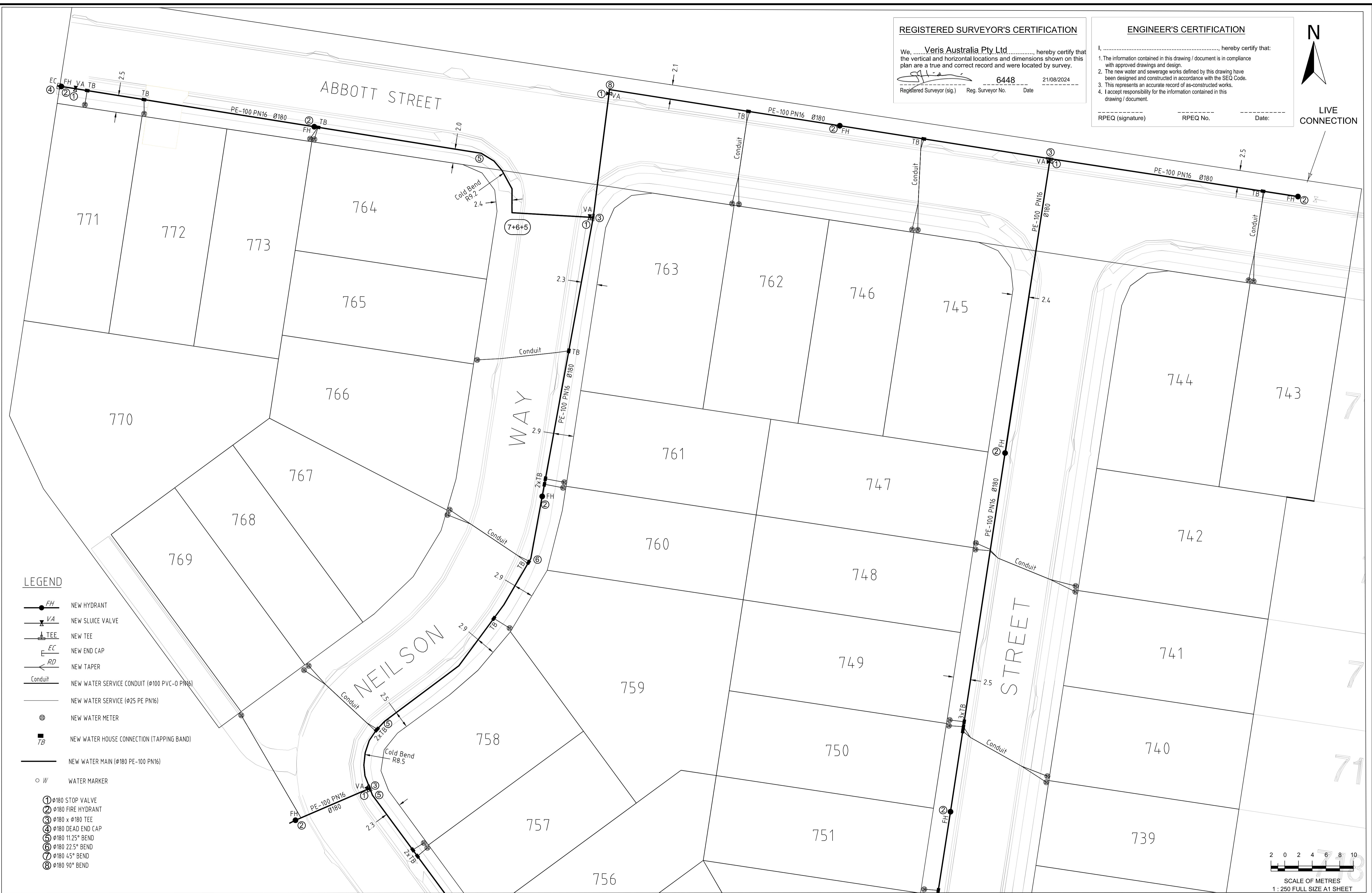
I, *[Signature]*, hereby certify that:

- The information contained in this drawing / document is in compliance with approved drawings and design.
- The new water and sewerage works defined by this drawing have been designed and constructed in accordance with the SEQ Code.
- This represents an accurate record of as-constructed works.
- I accept responsibility for the information contained in this drawing / document.

RPEQ (signature) _____ RPEQ No. _____ Date: _____

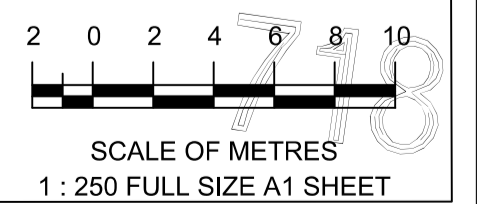


LIVE CONNECTION



LEGEND

- NEW HYDRANT
 - NEW SLUICE VALVE
 - NEW TEE
 - NEW END CAP
 - NEW TAPER
 - NEW WATER SERVICE CONDUIT (ø100 PVC-0 PN16)
 - NEW WATER SERVICE (ø25 PE PN16)
 - NEW WATER METER
 - NEW WATER HOUSE CONNECTION (TAPPING BAND)
 - NEW WATER MAIN (ø180 PE-100 PN16)
 - WATER MARKER
- ① ø180 STOP VALVE
 - ② ø180 FIRE HYDRANT
 - ③ ø180 x ø180 TEE
 - ④ ø180 DEAD END CAP
 - ⑤ ø180 11.25° BEND
 - ⑥ ø180 22.5° BEND
 - ⑦ ø180 45° BEND
 - ⑧ ø180 90° BEND



A1

REV NO	DATE	REVISION PURPOSE / DESCRIPTION	DRAWN	RPEQ	RPEQ No	INITIALS	DATE
D	15/07/2024	PROGRESS PLOT AS CON WATER	JMc				
C	28/05/2024	PROGRESS PLOT AS CON WATER	JMc				12/02/2024
B	03/05/2024	PROGRESS PLOT AS CON WATER	JMc				
A	22/03/2024	PROGRESS PLOT AS CON WATER	JMc				

veris

BRISBANE (07) 3666 4700 WHITSUNDAYS (07) 4945 6600
 MACKAY (07) 4957 9700 CAIRNS (07) 4052 9400

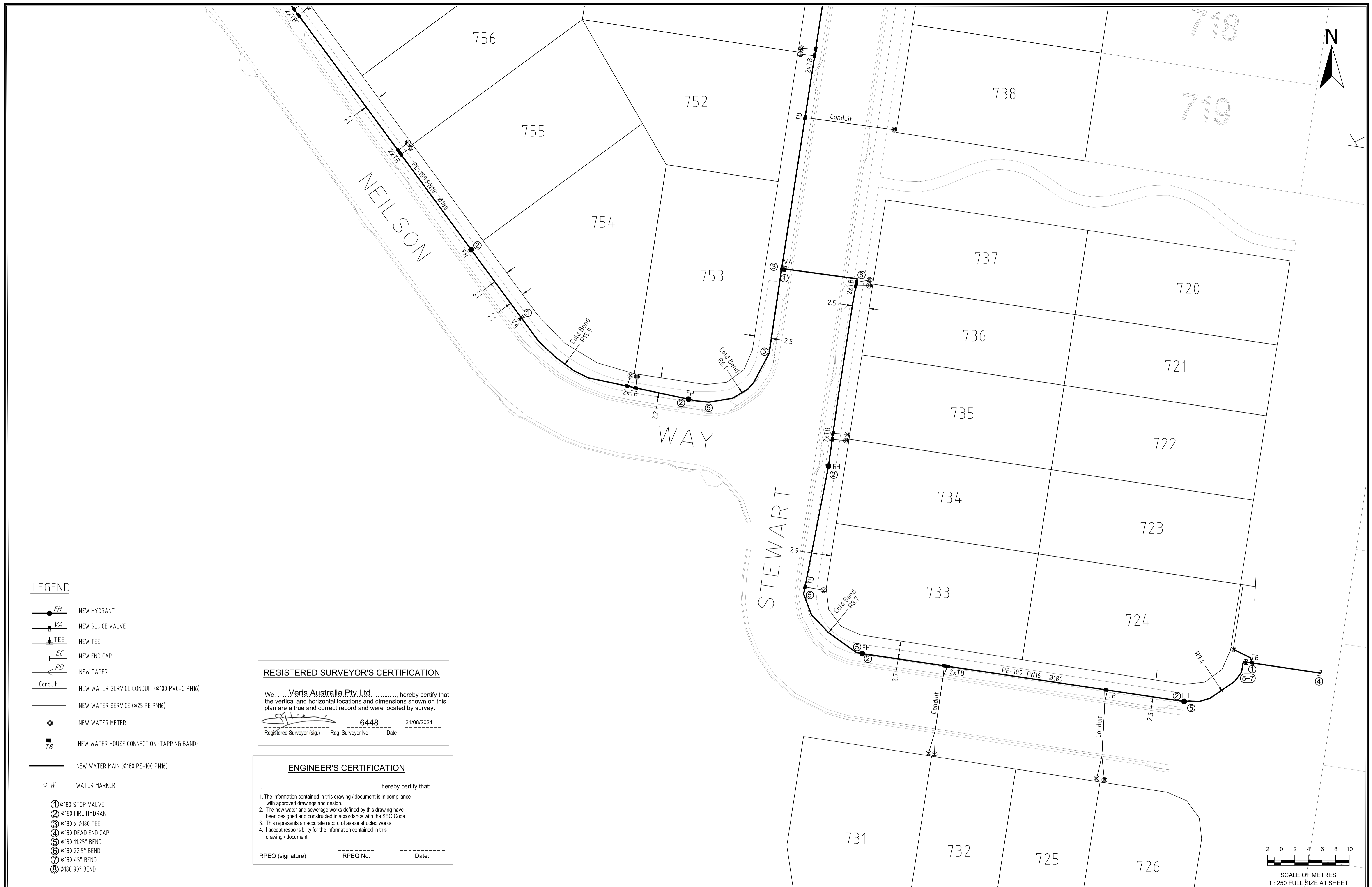
veris.com.au
 ACN 615 735 727
 Veris Australia Pty Ltd



DAWN WALLOON
 Banjo Drive Walloon

STAGE 6F
 AS CONSTRUCTED WATER

DRAWING STATUS AS CONSTRUCTED	
SHEET 2 OF 3 SHEETS	
DRAWING NO. 401905-6F-AW01	REV. D



LEGEND

- NEW HYDRANT
- NEW SLUICE VALVE
- NEW TEE
- NEW END CAP
- NEW TAPER
- NEW WATER SERVICE CONDUIT (Ø100 PVC-O PN16)
- NEW WATER SERVICE (Ø25 PE PN16)
- NEW WATER METER
- NEW WATER HOUSE CONNECTION (TAPPING BAND)
- NEW WATER MAIN (Ø180 PE-100 PN16)
- WATER MARKER

- ① Ø180 STOP VALVE
- ② Ø180 FIRE HYDRANT
- ③ Ø180 x Ø180 TEE
- ④ Ø180 DEAD END CAP
- ⑤ Ø180 11.25° BEND
- ⑥ Ø180 22.5° BEND
- ⑦ Ø180 45° BEND
- ⑧ Ø180 90° BEND

REGISTERED SURVEYOR'S CERTIFICATION

We, **Veris Australia Pty Ltd**, hereby certify that the vertical and horizontal locations and dimensions shown on this plan are a true and correct record and were located by survey.

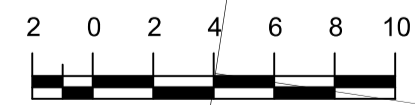
6448 21/08/2024
 Registered Surveyor (sig.) Reg. Surveyor No. Date

ENGINEER'S CERTIFICATION

I, _____, hereby certify that:

- The information contained in this drawing / document is in compliance with approved drawings and design.
- The new water and sewerage works defined by this drawing have been designed and constructed in accordance with the SEQ Code.
- This represents an accurate record of as-constructed works.
- I accept responsibility for the information contained in this drawing / document.

 RPEQ (signature) RPEQ No. Date:



SCALE OF METRES
1 : 250 FULL SIZE A1 SHEET

A1	D	15/07/2024	PROGRESS PLOT AS CON WATER	JMc					
	C	28/05/2024	PROGRESS PLOT AS CON WATER	JMc			DRAWN	JMc	12/02/2024
	B	03/05/2024	PROGRESS PLOT AS CON WATER	JMc			CHECKED		
	A	22/03/2024	PROGRESS PLOT AS CON WATER	JMc			APPROVED		
	REV NO	DATE	REVISION PURPOSE / DESCRIPTION	DRAWN	RPEQ	RPEQ No	INITIALS	DATE	

veris

BRISBANE (07) 3666 4700
 WHITSUNDAYS (07) 4945 6600
 MACKAY (07) 4957 9700
 CAIRNS (07) 4052 9400

veris.com.au
 ACN 615 735 727
 Veris Australia Pty Ltd

QUEENSLAND UrbanUtilities

**DAWN WALLOON
 NEILSON WAY WALLOON
 STAGE 6F
 AS CONSTRUCTED WATER**

**DRAWING STATUS
 AS CONSTRUCTED**

SHEET 3 OF 3 SHEETS

DRAWING NO. 401905-6F-AW01

REV. D