



**REGISTERED SURVEYOR'S CERTIFICATION**

I, Veris Australia Pty Ltd, hereby certify that the vertical and horizontal locations and dimensions shown on this plan are a true and correct record and were located by survey.

6448  
 Registered Surveyor (sig.) Reg. Surveyor No. Date

**ENGINEER'S CERTIFICATION**

I, \_\_\_\_\_, hereby certify that:

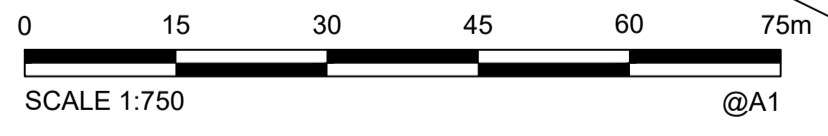
- The information contained in this drawing / document is in compliance with approved drawings and design.
- The new water and sewerage works defined by this drawing have been designed and constructed in accordance with the SEQ Code.
- This represents an accurate record of as-constructed works.
- I accept responsibility for the information contained in this drawing / document.

\_\_\_\_\_  
 RPEQ (signature) RPEQ No. Date:

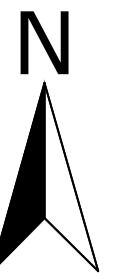
**LEGEND**

- NEW HYDRANT
- NEW SLUICE VALVE
- NEW TEE
- NEW END CAP
- NEW TAPER
- NEW WATER SERVICE CONDUIT (Ø100 PVC-O PN16)
- NEW WATER SERVICE (Ø25 PE PN16)
- NEW WATER METER
- NEW WATER HOUSE CONNECTION (TAPPING BAND)
- NEW WATER MAIN (Ø180 PE-100 PN16)
- WATER MARKER

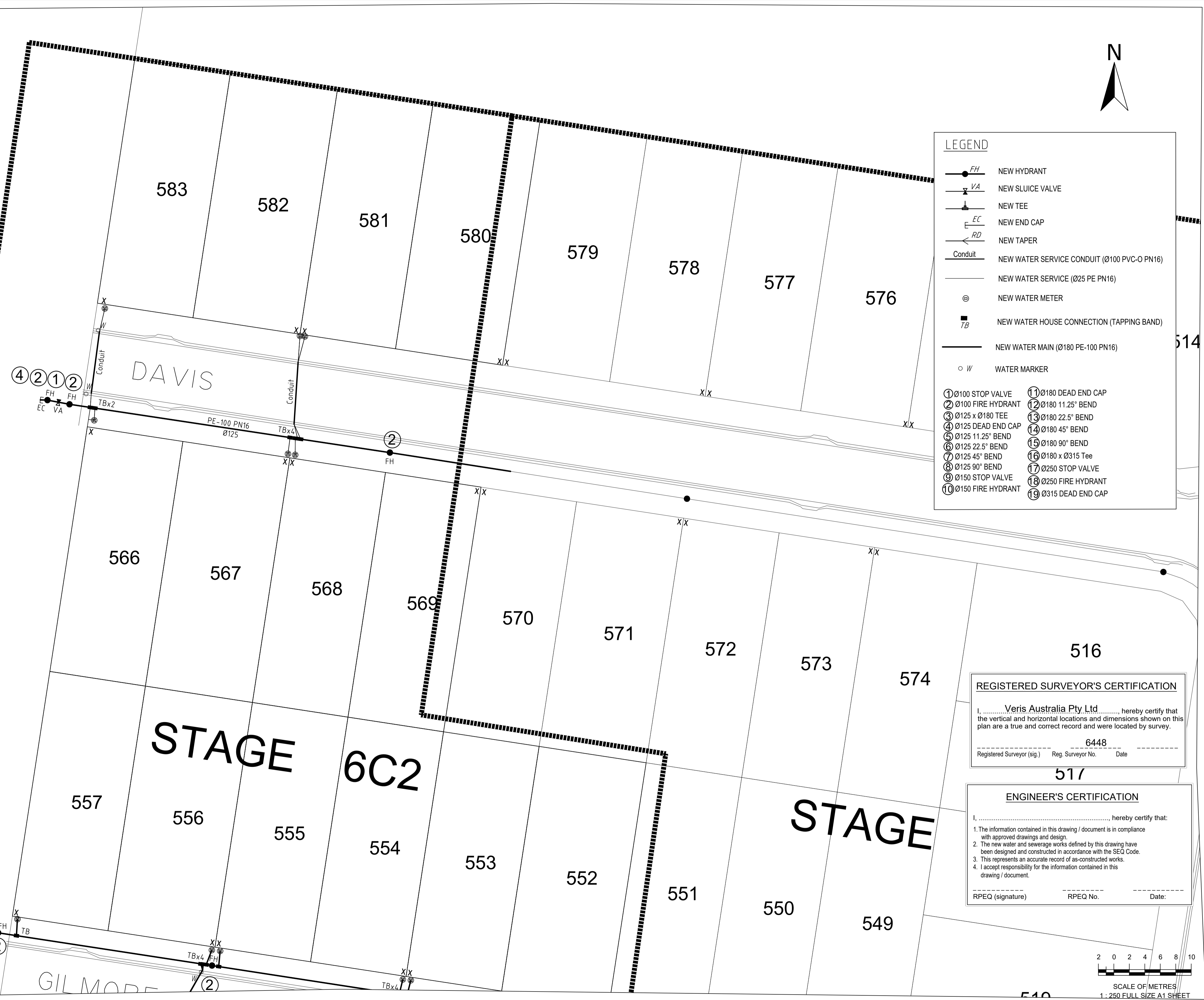
① Ø100 STOP VALVE	⑪ Ø180 DEAD END CAP
② Ø100 FIRE HYDRANT	⑫ Ø180 11.25° BEND
③ Ø125 x Ø180 TEE	⑬ Ø180 22.5° BEND
④ Ø125 DEAD END CAP	⑭ Ø180 45° BEND
⑤ Ø125 11.25° BEND	⑮ Ø180 90° BEND
⑥ Ø125 22.5° BEND	⑯ Ø180 x Ø315 Tee
⑦ Ø125 45° BEND	⑰ Ø250 STOP VALVE
⑧ Ø125 90° BEND	⑱ Ø250 FIRE HYDRANT
⑨ Ø150 STOP VALVE	⑲ Ø315 DEAD END CAP
⑩ Ø150 FIRE HYDRANT	



<b>A1</b>										 BRISBANE (07) 3666 4700 WHITSUNDAYS (07) 4945 6600 MACKAY (07) 4957 9700 CAIRNS (07) 4052 9400 veris.com.au ACN 615 735 727 Veris Australia Pty Ltd		DAWN WALLOON Parkland Drive Walloon	DRAWING STATUS <b>AS CONSTRUCTED</b>	
	B	07/11/2023	PROGRESS PLOT AS CON WATER	JMc	DRAWN	JMc	28/08/2023	CHECKED	APPROVED			SHEET 1 OF 4 SHEETS	DRAWING NO. 401905-6C2-AW01	REV. B
	A	28/08/2023	PROGRESS PLOT AS CON WATER	JMc	DRAWN	RPEQ	RPEQ No	INITIALS	DATE			STAGE 6C2 <b>AS CONSTRUCTED WATER</b>		
	REV NO	DATE	REVISION PURPOSE / DESCRIPTION	DRAWN	RPEQ	RPEQ No	INITIALS	DATE						

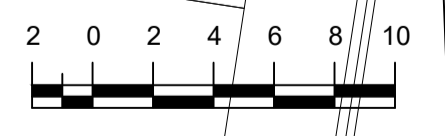


LEGEND	
	NEW HYDRANT
	NEW SLUICE VALVE
	NEW TEE
	NEW END CAP
	NEW TAPER
	NEW WATER SERVICE CONDUIT (Ø100 PVC-O PN16)
	NEW WATER SERVICE (Ø25 PE PN16)
	NEW WATER METER
	NEW WATER HOUSE CONNECTION (TAPPING BAND)
	NEW WATER MAIN (Ø180 PE-100 PN16)
	WATER MARKER
	Ø100 STOP VALVE
	Ø100 FIRE HYDRANT
	Ø125 x Ø180 TEE
	Ø125 DEAD END CAP
	Ø125 11.25° BEND
	Ø125 22.5° BEND
	Ø125 45° BEND
	Ø125 90° BEND
	Ø150 STOP VALVE
	Ø150 FIRE HYDRANT
	Ø180 DEAD END CAP
	Ø180 11.25° BEND
	Ø180 22.5° BEND
	Ø180 45° BEND
	Ø180 90° BEND
	Ø180 x Ø315 Tee
	Ø250 STOP VALVE
	Ø250 FIRE HYDRANT
	Ø315 DEAD END CAP



**REGISTERED SURVEYOR'S CERTIFICATION**  
 I, Veris Australia Pty Ltd, hereby certify that the vertical and horizontal locations and dimensions shown on this plan are a true and correct record and were located by survey.  
 \_\_\_\_\_  
 Registered Surveyor (sig.)      Reg. Surveyor No.      Date

**ENGINEER'S CERTIFICATION**  
 I, \_\_\_\_\_, hereby certify that:  
 1. The information contained in this drawing / document is in compliance with approved drawings and design.  
 2. The new water and sewerage works defined by this drawing have been designed and constructed in accordance with the SEQ Code.  
 3. This represents an accurate record of as-constructed works.  
 4. I accept responsibility for the information contained in this drawing / document.  
 \_\_\_\_\_  
 RPEQ (signature)      RPEQ No.      Date:



SCALE OF METRES  
 1 : 250 FULL SIZE A1 SHEET

<b>A1</b>										
	B	07/11/2023	PROGRESS PLOT AS CON WATER	JMc				DRAWN	JMc	28/08/2023
	A	28/08/2023	PROGRESS PLOT AS CON WATER	JMc				CHECKED		
REV NO	DATE	REVISION PURPOSE / DESCRIPTION	DRAWN	RPEQ	RPEQ No		APPROVED		INITIALS	DATE

**veris**  
 BRISBANE (07) 3666 4700      WHITSUNDAYS (07) 4945 6600  
 MACKAY (07) 4957 9700      CAIRNS (07) 4052 9400  
 veris.com.au  
 ACN 615 735 727  
 Veris Australia Pty Ltd



**DAWN WALLOON**  
 Parkland Drive Walloon  
**STAGE 6C2**  
 AS CONSTRUCTED WATER

DRAWING STATUS <b>AS CONSTRUCTED</b>	
SHEET 2 OF 4 SHEETS	
DRAWING NO. <b>401905-6C2-AW01</b>	REV. <b>B</b>

**LEGEND**

- NEW HYDRANT
- NEW SLUICE VALVE
- NEW TEE
- NEW END CAP
- NEW TAPER
- NEW WATER SERVICE CONDUIT (Ø100 PVC-O PN16)
- NEW WATER SERVICE (Ø25 PE PN16)
- NEW WATER METER
- NEW WATER HOUSE CONNECTION (TAPPING BAND)
- NEW WATER MAIN (Ø180 PE-100 PN16)
- WATER MARKER

- ① Ø100 STOP VALVE
- ② Ø100 FIRE HYDRANT
- ③ Ø125 x Ø180 TEE
- ④ Ø125 DEAD END CAP
- ⑤ Ø125 11.25° BEND
- ⑥ Ø125 22.5° BEND
- ⑦ Ø125 45° BEND
- ⑧ Ø125 90° BEND
- ⑨ Ø150 STOP VALVE
- ⑩ Ø150 FIRE HYDRANT
- ⑪ Ø180 DEAD END CAP
- ⑫ Ø180 11.25° BEND
- ⑬ Ø180 22.5° BEND
- ⑭ Ø180 45° BEND
- ⑮ Ø180 90° BEND
- ⑯ Ø180 x Ø315 Tee
- ⑰ Ø250 STOP VALVE
- ⑱ Ø250 FIRE HYDRANT
- ⑲ Ø315 DEAD END CAP

**REGISTERED SURVEYOR'S CERTIFICATION**

I, **Veris Australia Pty Ltd**, hereby certify that the vertical and horizontal locations and dimensions shown on this plan are a true and correct record and were located by survey.

Registered Surveyor (sig.) **6448** Reg. Surveyor No. Date

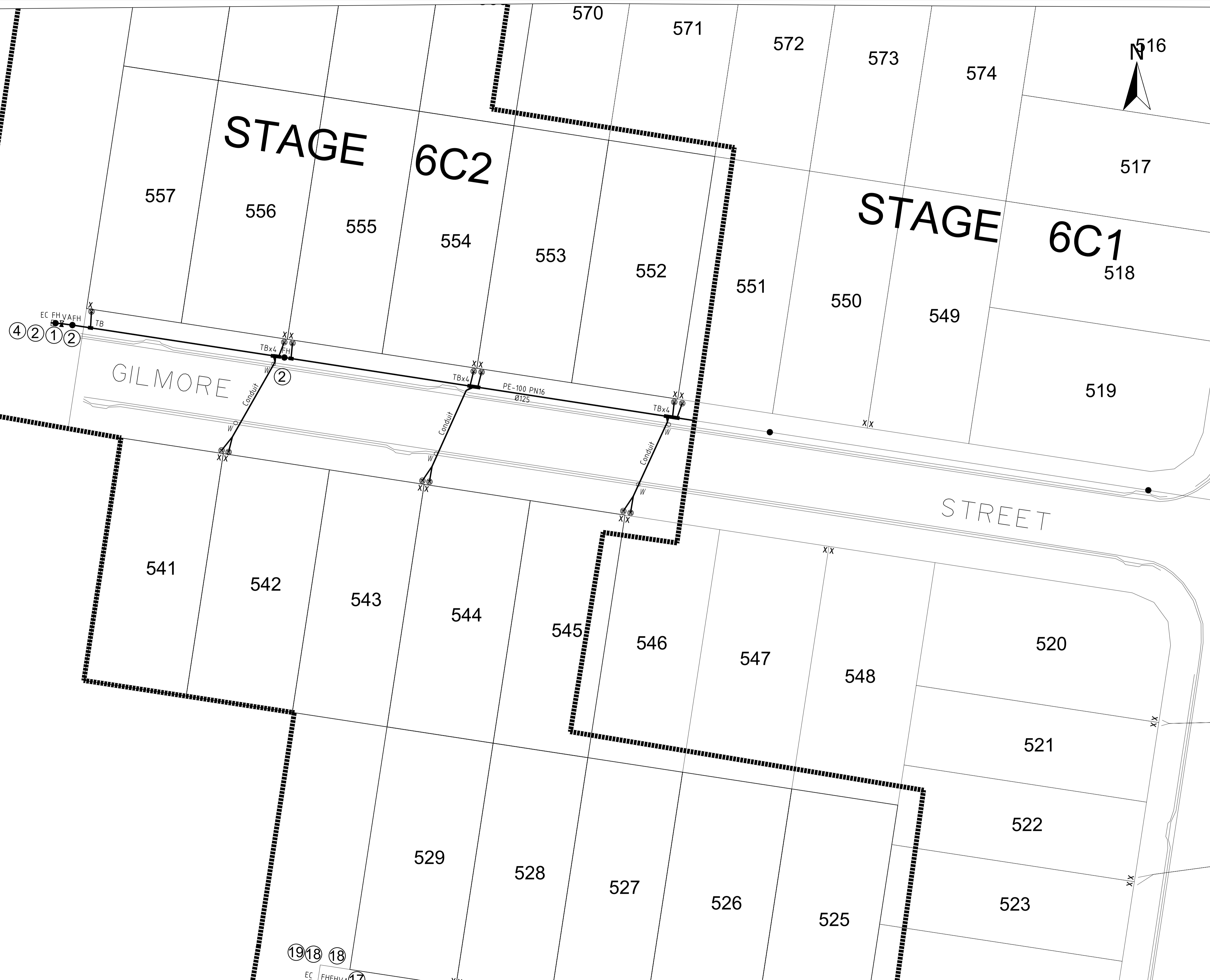
**ENGINEER'S CERTIFICATION**

I, \_\_\_\_\_ hereby certify that:  
 1. The information contained in this drawing / document is in compliance with approved drawings and design.  
 2. The new water and sewerage works defined by this drawing have been designed and constructed in accordance with the SEQ Code.  
 3. This represents an accurate record of as-constructed works.  
 4. I accept responsibility for the information contained in this drawing / document.

RPEQ (signature) RPEQ No. Date:



SCALE OF METRES  
1 : 250 FULL SIZE A1 SHEET



**A1**

REV NO	DATE	REVISION PURPOSE / DESCRIPTION	DRAWN	RPEQ	RPEQ No	INITIALS	DATE
B	07/11/2023	PROGRESS PLOT AS CON WATER	JMc				
A	28/08/2023	PROGRESS PLOT AS CON WATER	JMc				

**veris**

BRISBANE (07) 3666 4700  
 MACKAY (07) 4957 9100  
 WHITSUNDAYS (07) 4945 6600  
 CAIRNS (07) 4052 9400

veris.com.au  
 ACN 615 735 727  
 Veris Australia Pty Ltd



**DAWN WALLOON**  
 Parkland Drive Walloon

**STAGE 6C2**  
 AS CONSTRUCTED WATER

DRAWING STATUS <b>AS CONSTRUCTED</b>	
SHEET 3 OF 4 SHEETS	
DRAWING NO. <b>401905-6C2-AW01</b>	REV. <b>B</b>



**LEGEND**

	NEW HYDRANT
	NEW SLUICE VALVE
	NEW TEE
	NEW END CAP
	NEW TAPER
	NEW WATER SERVICE CONDUIT (Ø100 PVC-O PN16)
	NEW WATER SERVICE (Ø25 PE PN16)
	NEW WATER METER
	NEW WATER HOUSE CONNECTION (TAPPING BAND)
	NEW WATER MAIN (Ø180 PE-100 PN16)
	WATER MARKER

① Ø100 STOP VALVE	⑪ Ø180 DEAD END CAP
② Ø100 FIRE HYDRANT	⑫ Ø180 11.25° BEND
③ Ø125 x Ø180 TEE	⑬ Ø180 22.5° BEND
④ Ø125 DEAD END CAP	⑭ Ø180 45° BEND
⑤ Ø125 11.25° BEND	⑮ Ø180 90° BEND
⑥ Ø125 22.5° BEND	⑯ Ø180 x Ø315 Tee
⑦ Ø125 45° BEND	⑰ Ø250 STOP VALVE
⑧ Ø125 90° BEND	⑱ Ø250 FIRE HYDRANT
⑨ Ø150 STOP VALVE	⑲ Ø315 DEAD END CAP
⑩ Ø150 FIRE HYDRANT	

**REGISTERED SURVEYOR'S CERTIFICATION**

I, Veris Australia Pty Ltd, hereby certify that the vertical and horizontal locations and dimensions shown on this plan are a true and correct record and were located by survey.

6448

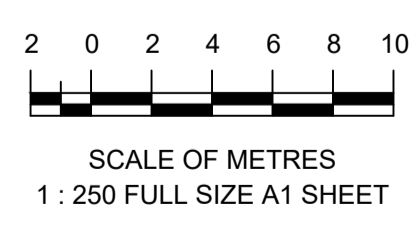
Registered Surveyor (sig.) Reg. Surveyor No. Date

**ENGINEER'S CERTIFICATION**

I, \_\_\_\_\_, hereby certify that:

- The information contained in this drawing / document is in compliance with approved drawings and design.
- The new water and sewerage works defined by this drawing have been designed and constructed in accordance with the SEQ Code.
- This represents an accurate record of as-constructed works.
- I accept responsibility for the information contained in this drawing / document.

RPEQ (signature) RPEQ No. Date:



<b>A1</b>	REV NO	DATE	REVISION PURPOSE / DESCRIPTION	DRAWN	RPEQ	RPEQ No	INITIALS	DATE
	B	07/11/2023	PROGRESS PLOT AS CON WATER	JMc				
	A	28/08/2023	PROGRESS PLOT AS CON WATER	JMc				

<b>veris</b>	BRISBANE (07) 3666 4700	WHITSUNDAYS (07) 4945 6600
	MACKAY (07) 4957 9700	CAIRNS (07) 4052 9400
	veris.com.au	
	ACN 615 735 727	
	Veris Australia Pty Ltd	



**DAWN WALLOON**  
Parkland Drive Walloon

**STAGE 6C2**  
AS CONSTRUCTED WATER

DRAWING STATUS <b>AS CONSTRUCTED</b>	
SHEET 4 OF 4 SHEETS	
DRAWING NO. 401905-6C2-AW01	REV. B