

REGISTERED SURVEYOR'S CERTIFICATION

I, **Veris Australia Pty Ltd**, hereby certify that the vertical and horizontal locations and dimensions shown on this plan are a true and correct record and were located by survey.

6448
 Registered Surveyor (sig.) Reg. Surveyor No. Date

ENGINEER'S CERTIFICATION

I, _____, hereby certify that:

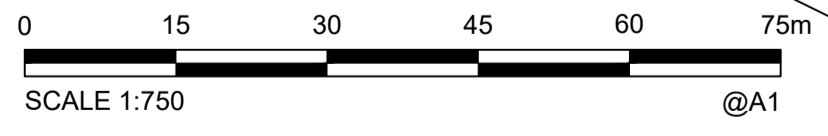
- The information contained in this drawing / document is in compliance with approved drawings and design.
- The new water and sewerage works defined by this drawing have been designed and constructed in accordance with the SEQ Code.
- This represents an accurate record of as-constructed works.
- I accept responsibility for the information contained in this drawing / document.

 RPEQ (signature) RPEQ No. Date:

LEGEND

- NEW HYDRANT
- NEW SLUICE VALVE
- NEW TEE
- NEW END CAP
- NEW TAPER
- NEW WATER SERVICE CONDUIT (Ø100 PVC-O PN16)
- NEW WATER SERVICE (Ø25 PE PN16)
- NEW WATER METER
- NEW WATER HOUSE CONNECTION (TAPPING BAND)
- NEW WATER MAIN (Ø125/Ø180/Ø315 PE-100 PN16)
- WATER MARKER

- ① Ø100 STOP VALVE
- ② Ø100 FIRE HYDRANT
- ③ Ø150 x Ø100 TEE
- ④ Ø125 DEAD END CAP
- ⑤ Ø125 11.25° PE E-F BEND
- ⑥ Ø125 22.5° PE E-F BEND
- ⑦ Ø125 45° PE E-F BEND
- ⑧ Ø125 90° PE E-F BEND
- ⑨ Ø150 STOP VALVE
- ⑩ Ø150 FIRE HYDRANT
- ⑪ Ø180 DEAD END CAP
- ⑫ Ø180 11.25° PE E-F BEND
- ⑬ Ø180 22.5° PE E-F BEND
- ⑭ Ø180 45° PE E-F BEND
- ⑮ Ø180 90° PE E-F BEND
- ⑯ Ø300 x Ø150 Tee
- ⑰ Ø300 STOP VALVE
- ⑱ Ø300 FIRE HYDRANT
- ⑲ Ø315 DEAD END CAP
- ⑳ Ø315 PE E-F / Ø300 FL (DCL)
- ㉑ Ø180 PE E-F / Ø150 FL (DCL)



A1

REV NO	DATE	REVISION PURPOSE / DESCRIPTION	DRAWN	RPEQ	RPEQ No
B	07/11/2023	PROGRESS PLOT AS CON WATER	JMc		
A	28/08/2023	PROGRESS PLOT AS CON WATER	JMc		

DRAWN	JMc	28/08/2023
CHECKED		
APPROVED		
INITIALS		DATE

veris

BRISBANE (07) 3666 4700
 WHITSUNDAYS (07) 4945 6600
 MACKAY (07) 4957 9100
 CAIRNS (07) 4052 9400

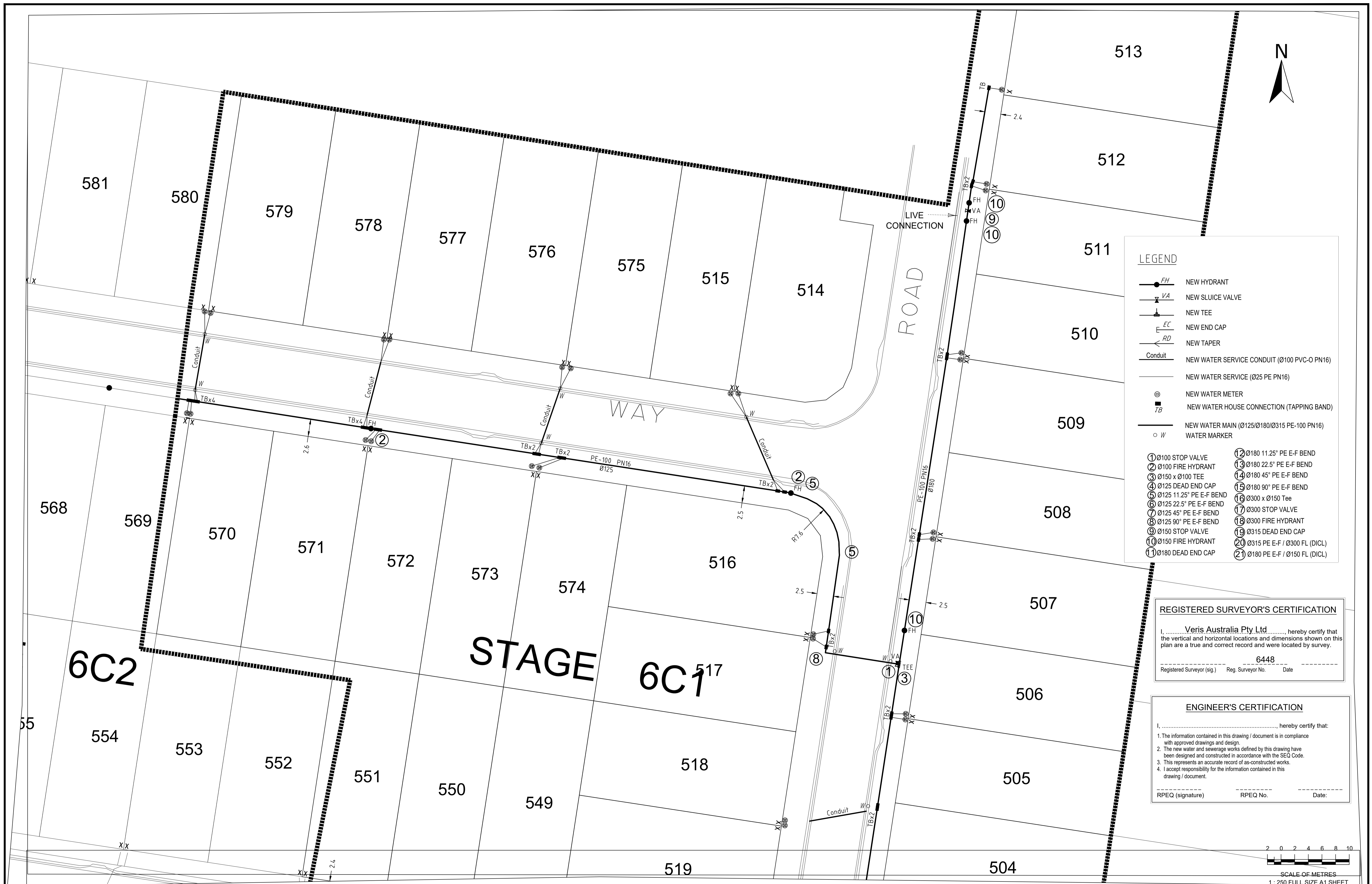
veris.com.au
 ACN 615 735 727
 Veris Australia Pty Ltd



DAWN WALLOON
 Patterson Road Walloon

STAGE 6C1
 AS CONSTRUCTED WATER

DRAWING STATUS AS CONSTRUCTED	
SHEET 1 OF 3 SHEETS	
DRAWING NO. 401905-6C1-AW01	REV. B



- LEGEND**
- NEW HYDRANT
 - NEW SLUICE VALVE
 - NEW TEE
 - NEW END CAP
 - NEW TAPER
 - NEW WATER SERVICE CONDUIT (Ø100 PVC-O PN16)
 - NEW WATER SERVICE (Ø25 PE PN16)
 - NEW WATER METER
 - NEW WATER HOUSE CONNECTION (TAPPING BAND)
 - NEW WATER MAIN (Ø125/Ø180/Ø315 PE-100 PN16)
 - WATER MARKER
- ① Ø100 STOP VALVE
 - ② Ø100 FIRE HYDRANT
 - ③ Ø150 x Ø100 TEE
 - ④ Ø125 DEAD END CAP
 - ⑤ Ø125 11.25° PE E-F BEND
 - ⑥ Ø125 22.5° PE E-F BEND
 - ⑦ Ø125 45° PE E-F BEND
 - ⑧ Ø125 90° PE E-F BEND
 - ⑨ Ø150 STOP VALVE
 - ⑩ Ø150 FIRE HYDRANT
 - ⑪ Ø180 DEAD END CAP
 - ⑫ Ø180 11.25° PE E-F BEND
 - ⑬ Ø180 22.5° PE E-F BEND
 - ⑭ Ø180 45° PE E-F BEND
 - ⑮ Ø180 90° PE E-F BEND
 - ⑯ Ø300 x Ø150 Tee
 - ⑰ Ø300 STOP VALVE
 - ⑱ Ø300 FIRE HYDRANT
 - ⑲ Ø315 DEAD END CAP
 - ⑳ Ø315 PE E-F / Ø300 FL (DICL)
 - ㉑ Ø180 PE E-F / Ø150 FL (DICL)

REGISTERED SURVEYOR'S CERTIFICATION

I, Veris Australia Pty Ltd, hereby certify that the vertical and horizontal locations and dimensions shown on this plan are a true and correct record and were located by survey.

6448

Registered Surveyor (sig.) Reg. Surveyor No. Date

ENGINEER'S CERTIFICATION

I, _____, hereby certify that:

- The information contained in this drawing / document is in compliance with approved drawings and design.
- The new water and sewerage works defined by this drawing have been designed and constructed in accordance with the SEQ Code.
- This represents an accurate record of as-constructed works.
- I accept responsibility for the information contained in this drawing / document.

RPEQ (signature) RPEQ No. Date:

A1									
	B	07/11/2023	PROGRESS PLOT AS CON WATER	JMc					
	A	28/08/2023	PROGRESS PLOT AS CON WATER	JMc					
	REV NO	DATE	REVISION PURPOSE / DESCRIPTION	DRAWN	RPEQ	RPEQ No	INITIALS	DATE	

 BRISBANE (07) 3666 4700 MACKAY (07) 4957 9100 WHITSUNDAYS (07) 4945 6600 CAIRNS (07) 4052 9400 veris.com.au ACN 615 735 727 Veris Australia Pty Ltd	
---	--

DAWN WALLOON
Patterson Road Walloon

STAGE 6C1
AS CONSTRUCTED WATER

DRAWING STATUS	
AS CONSTRUCTED	
SHEET 2 OF 3 SHEETS	
DRAWING NO.	REV.
401905-6C1-AW01	B



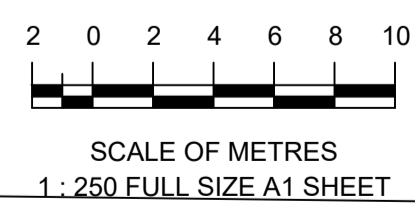
REGISTERED SURVEYOR'S CERTIFICATION
 I, Veris Australia Pty Ltd, hereby certify that the vertical and horizontal locations and dimensions shown on this plan are a true and correct record and were located by survey.

 Registered Surveyor (sig.) Reg. Surveyor No. 6448 Date

ENGINEER'S CERTIFICATION
 I, _____, hereby certify that:
 1. The information contained in this drawing / document is in compliance with approved drawings and design.
 2. The new water and sewerage works defined by this drawing have been designed and constructed in accordance with the SEQ Code.
 3. This represents an accurate record of as-constructed works.
 4. I accept responsibility for the information contained in this drawing / document.

 RPEQ (signature) RPEQ No. Date:

- LEGEND**
- NEW HYDRANT
 - NEW SLUICE VALVE
 - NEW TEE
 - NEW END CAP
 - NEW TAPER
 - NEW WATER SERVICE CONDUIT (Ø100 PVC-O PN16)
 - NEW WATER SERVICE (Ø25 PE PN16)
 - NEW WATER METER
 - NEW WATER HOUSE CONNECTION (TAPPING BAND)
 - NEW WATER MAIN (Ø125/Ø180/Ø315 PE-100 PN16)
 - WATER MARKER
- ① Ø100 STOP VALVE
 - ② Ø100 FIRE HYDRANT
 - ③ Ø150 x Ø100 TEE
 - ④ Ø125 DEAD END CAP
 - ⑤ Ø125 11.25° PE E-F BEND
 - ⑥ Ø125 22.5° PE E-F BEND
 - ⑦ Ø125 45° PE E-F BEND
 - ⑧ Ø125 90° PE E-F BEND
 - ⑨ Ø150 STOP VALVE
 - ⑩ Ø150 FIRE HYDRANT
 - ⑪ Ø180 DEAD END CAP
 - ⑫ Ø180 11.25° PE E-F BEND
 - ⑬ Ø180 22.5° PE E-F BEND
 - ⑭ Ø180 45° PE E-F BEND
 - ⑮ Ø180 90° PE E-F BEND
 - ⑯ Ø300 x Ø150 Tee
 - ⑰ Ø300 STOP VALVE
 - ⑱ Ø300 FIRE HYDRANT
 - ⑲ Ø315 DEAD END CAP
 - ⑳ Ø315 PE E-F / Ø300 FL (DICL)
 - ㉑ Ø180 PE E-F / Ø150 FL (DICL)



A1	REV NO	DATE	REVISION PURPOSE / DESCRIPTION	DRAWN	RPEQ	RPEQ No	DRAWN	JMc	DATE
	B	07/11/2023	PROGRESS PLOT AS CON WATER	JMc			CHECKED	JMc	28/08/2023
	A	28/08/2023	PROGRESS PLOT AS CON WATER	JMc			APPROVED		

veris
 BRISBANE (07) 3666 4700
 MACKAY (07) 4957 9100
 WHITSUNDAYS (07) 4945 6600
 CAIRNS (07) 4052 9400
 veris.com.au
 ACN 615 735 727
 Veris Australia Pty Ltd



DAWN WALLOON
 Patterson Road Walloon
STAGE 6C1
 AS CONSTRUCTED WATER

DRAWING STATUS AS CONSTRUCTED	
SHEET 3 OF 3 SHEETS	
DRAWING NO. 401905-6C1-AW01	REV. B