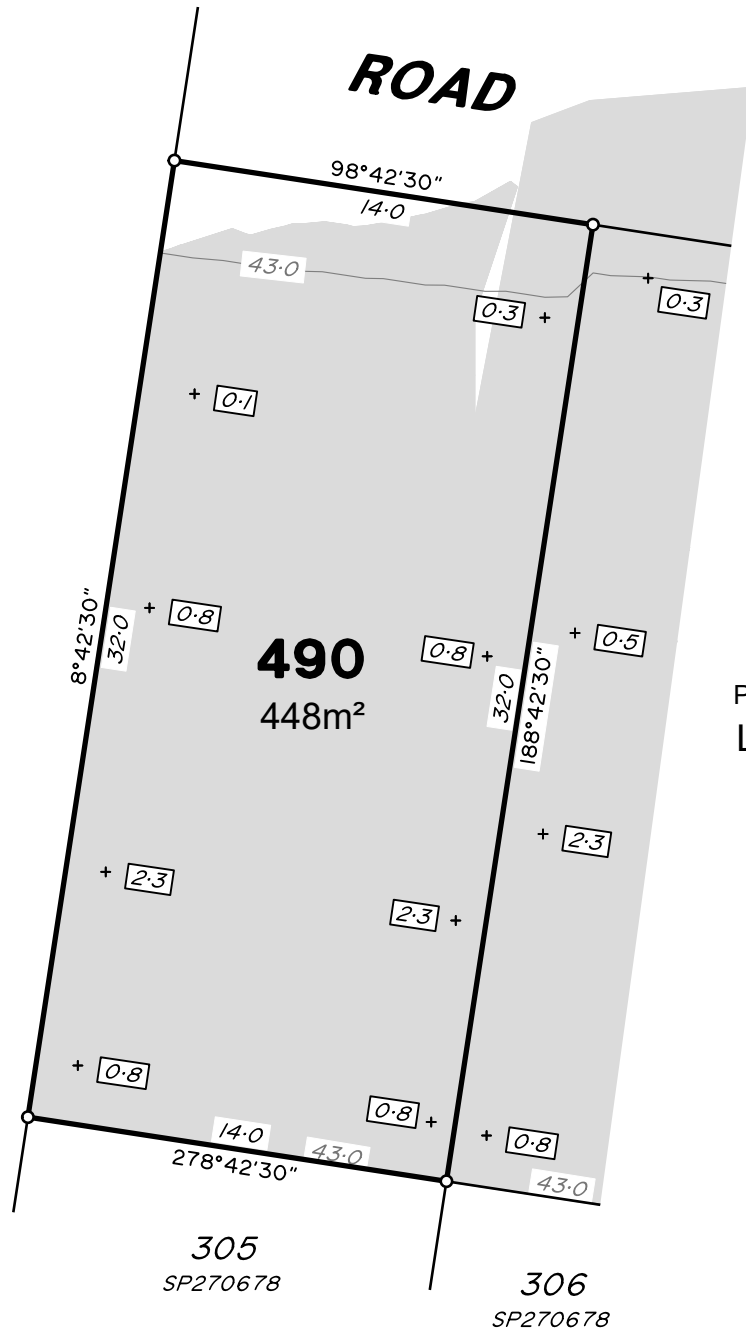




1 (Bal)
SP331771



PROPOSED
LOT 491

LEGEND

Final surface contours based on A.H.D. datum at an interval of 0.5m, shown as: — 15.5 —

Where applicable, areas to be filled are shown as:

Depth of fill, in metres, shown as: - + 0.5

Retaining wall and retaining wall height, shown on the lower side of the wall, have been calculated from digital data supplied by Calbre Engineers and shown as:

(1.2)

ADDITIONAL NOTES:

The LOT dimensions and area shown hereon are subject to final field survey and also to the requirements of Council and any other authority which may have requirements under any relevant legislation

Final surface contours, fill areas, depth calcs & retaining walls shown hereon have been supplied by Calibre Engineers.

Compaction of any fill material placed on this site shall be completed to level one inspection and testing services in accordance with AS3798-2007.

Depth of fill values are calculated to the lower of the pre-development surface and the ground surface from Survey.

Copyright © Veris Australia Pty Ltd 27/05/2022.

Dawn
Walloon - Stage 6C2
For
ID_Land

IMPORTANT NOTES:
(These notes are an integral part of this plan)

This plan has been prepared for ID_LAND for the purposes of A Disclosure Plan Under the Land Sales Act 1984 (as amended).

It is not to be used by any other person or corporation or for any other purposes and is subject to the following limitations:

Please refer to the approved Development Application for conditions relating to the LOT and to approved Operational Works drawings for services location and possible easements.

THESE DESIGNS AND DRAWINGS ARE COPYRIGHT AND ARE NOT TO BE USED OR REPRODUCED WITHOUT THE WRITTEN PERMISSION OF VERIS

Data Sources	
Cadastral Boundaries	401364-LC01-(K).dwg
Engineering Design	2022 X-21-000113.03_6C1C2_BASE.dwg
Final Surface Contours	20220513 Design contours Stg 6C1&C2.dwg
Pre-development Surface	20220513 Design tin Stg 6C1&C2.dwg

Issue	Revisions	Date	Drawn
A	Original	27.05.2022	BK

Locality:	Walloon
Local Authority:	Ipswich City Council
Horizontal Meridian:	MGA Zone 56
Vertical Level Datum:	*
Scale:	1:250 @ A4
Designed:	CALIBRE ENGINEERS
Drawn:	BK 27/05/2022
Checked:	DMC & KJJ 27/05/2022
Plot Date:	27 May, 2022
Computer File Ref:	401905-ST6C2-DP(A).dwg

DISCLOSURE PLAN
of Proposed LOT 490
being part of
Lot 1
on SP331771



veris

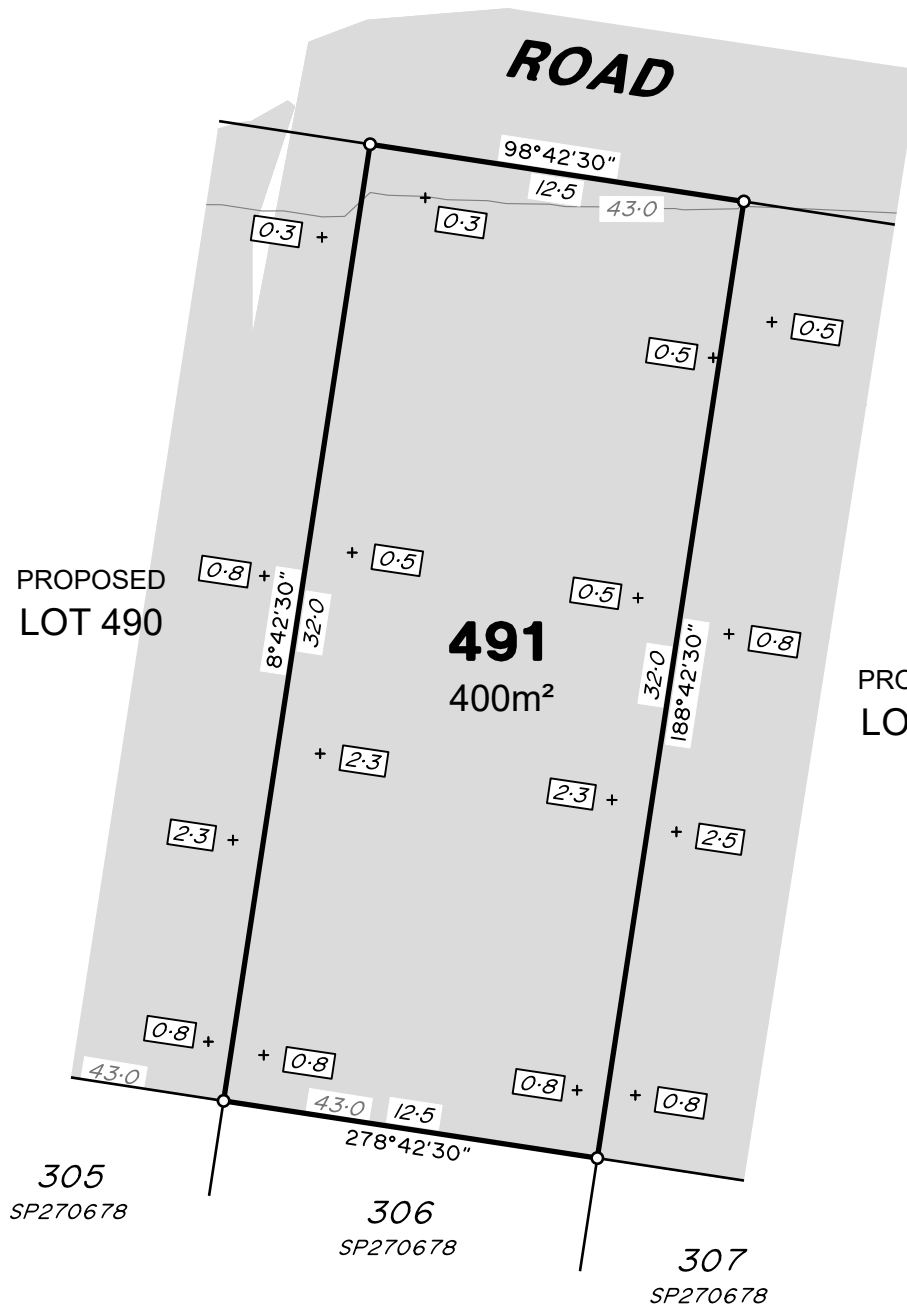
BRISBANE (07) 3686 4700 WHITSUNDAYS (07) 4945 6600

MACKAY (07) 4957 9700 CAIRNS (07) 4252 9400

veris.com.au
ACN 615 735 727
Veris Australia Pty Ltd

Drawing No 401905-DP- 490 Issue A

0 12.5m 50 mm 25m 100 mm 37.5m 150 mm SCALE BAR

**ADDITIONAL NOTES:**

The LOT dimensions and area shown hereon are subject to final field survey and also to the requirements of Council and any other authority which may have requirements under any relevant legislation

Final surface contours, fill areas, depth calcs & retaining walls shown hereon have been supplied by Calibre Engineers.

Compaction of any fill material placed on this site shall be completed to level one inspection and testing services in accordance with AS3798-2007.

Depth of fill values are calculated to the lower of the pre-development surface and the ground surface from Survey.

Copyright © Veris Australia Pty Ltd 27/05/2022.

Dawn
Walloon - Stage 6C2
For
ID_Land

IMPORTANT NOTES:
(These notes are an integral part of this plan)

This plan has been prepared for ID_LAND for the purposes of A Disclosure Plan Under the Land Sales Act 1984 (as amended).

It is not to be used by any other person or corporation or for any other purposes and is subject to the following limitations:

Please refer to the approved Development Application for conditions relating to the LOT and to approved Operational Works drawings for services location and possible easements.

THESE DESIGNS AND DRAWINGS ARE COPYRIGHT AND ARE NOT TO BE USED OR REPRODUCED WITHOUT THE WRITTEN PERMISSION OF VERIS

Data Sources

Cadastral Boundaries 401364-LC01-(K).dwg
Engineering Design 2022 X-21-001113.03_6C1C2_BASE.dwg
Final Surface Contours 20220513 Design contours Stg 6C1&C2.dwg
Pre-development Surface 20220513 Design tin Stg 6C1&C2.dwg

Issue	Revisions	Date	Drawn
A	Original	27.05.2022	BK

Locality: Walloon
Local Authority: Ipswich City Council
Horizontal Meridian: MGA Zone 56
Vertical Level Datum: *
Scale: 1:250 @ A4
Designed: CALIBRE ENGINEERS
Drawn: BK 27/05/2022
Checked: DMC & KJJ 27/05/2022
Plot Date: 27 May, 2022
Computer File Ref: 401905-ST6C2-DP(A).dwg

DISCLOSURE PLAN
of Proposed LOT 491
being part of
Lot 1
on SP331771



veris

BRISBANE (07) 3686 4700 WHITSUNDAYS (07) 4945 6600

MACKAY (07) 4957 9700 CAIRNS (07) 4252 9400

veris.com.au
ACN 615 735 727
Veris Australia Pty Ltd

Drawing No 401905-DP- 491 Issue A

LEGEND

Final surface contours based on A.H.D. datum at an interval of 0.5m, shown as: — 15.5 —

Where applicable, areas to be filled are shown as:

Depth of fill, in metres, shown as:- +0.5

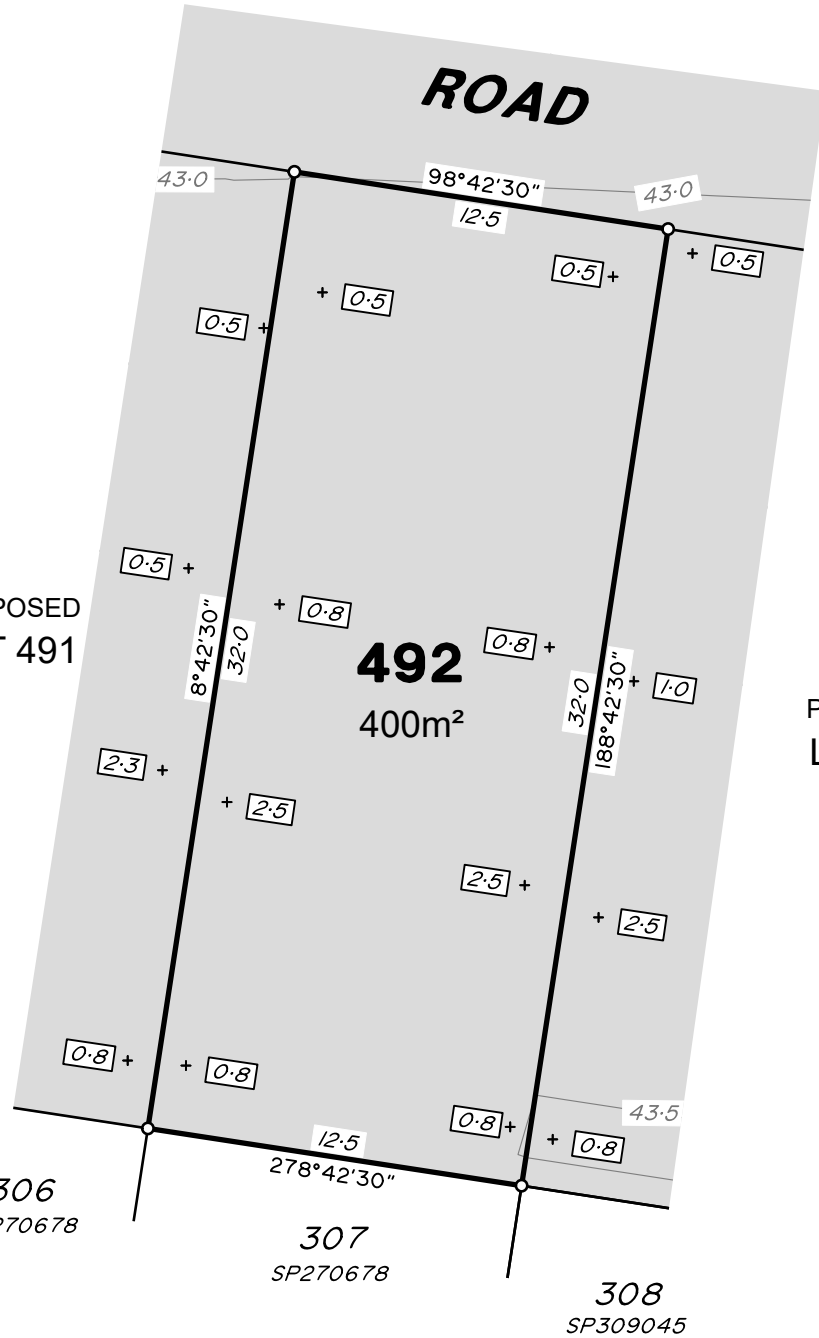
Retaining wall and retaining wall height, shown on the lower side of the wall, have been calculated from digital data supplied by Calbre Engineers and shown as:

(1.2)





PROPOSED LOT 491



PROPOSED LOT 493

ADDITIONAL NOTES:

The LOT dimensions and area shown hereon are subject to final field survey and also to the requirements of Council and any other authority which may have requirements under any relevant legislation

Final surface contours, fill areas, depth calcs & retaining walls shown hereon have been supplied by Calibre Engineers.

Compaction of any fill material placed on this site shall be completed to level one inspection and testing services in accordance with AS3798-2007.

Depth of fill values are calculated to the lower of the pre-development surface and the ground surface from Survey.

Copyright © Veris Australia Pty Ltd 27/05/2022.

Dawn
Walloon - Stage 6C2
For
ID_Land

IMPORTANT NOTES:
(These notes are an integral part of this plan)

This plan has been prepared for ID_LAND for the purposes of A Disclosure Plan Under the Land Sales Act 1984 (as amended).

It is not to be used by any other person or corporation or for any other purposes and is subject to the following limitations:

Please refer to the approved Development Application for conditions relating to the LOT and to approved Operational Works drawings for services location and possible easements.

THESE DESIGNS AND DRAWINGS ARE COPYRIGHT AND ARE NOT TO BE USED OR REPRODUCED WITHOUT THE WRITTEN PERMISSION OF VERIS

Data Sources	
Cadastral Boundaries	401364-LC01-(K).dwg
Engineering Design	2022 X-21-000113.03_6C1C2_BASE.dwg
Final Surface Contours	20220513 Design contours Stg 6C1&C2.dwg
Pre-development Surface	20220513 Design tin Stg 6C1&C2.dwg

Issue	Revisions	Date	Drawn
A	Original	27.05.2022	BK

Locality:	Walloon
Local Authority:	Ipswich City Council
Horizontal Meridian:	MGA Zone 56
Vertical Level Datum:	*
Scale:	1:250 @ A4
Designed:	CALIBRE ENGINEERS
Drawn:	BK 27/05/2022
Checked:	DMC & KJJ 27/05/2022
Plot Date:	27 May, 2022
Computer File Ref: 401905-ST6C2-DP(A).dwg	

DISCLOSURE PLAN
of Proposed LOT 492
being part of
Lot 1
on SP331771



veris

BRISBANE (07) 3686 4700 WHITSUNDAYS (07) 4945 6600

MACKAY (07) 4957 9700 CAIRNS (07) 4252 9400

veris.com.au
ACN 615 735 727
Veris Australia Pty Ltd

Drawing No 401905-DP- 492 Issue A

LEGEND

Final surface contours based on A.H.D. datum at an interval of 0.5m, shown as: — 15.5 —

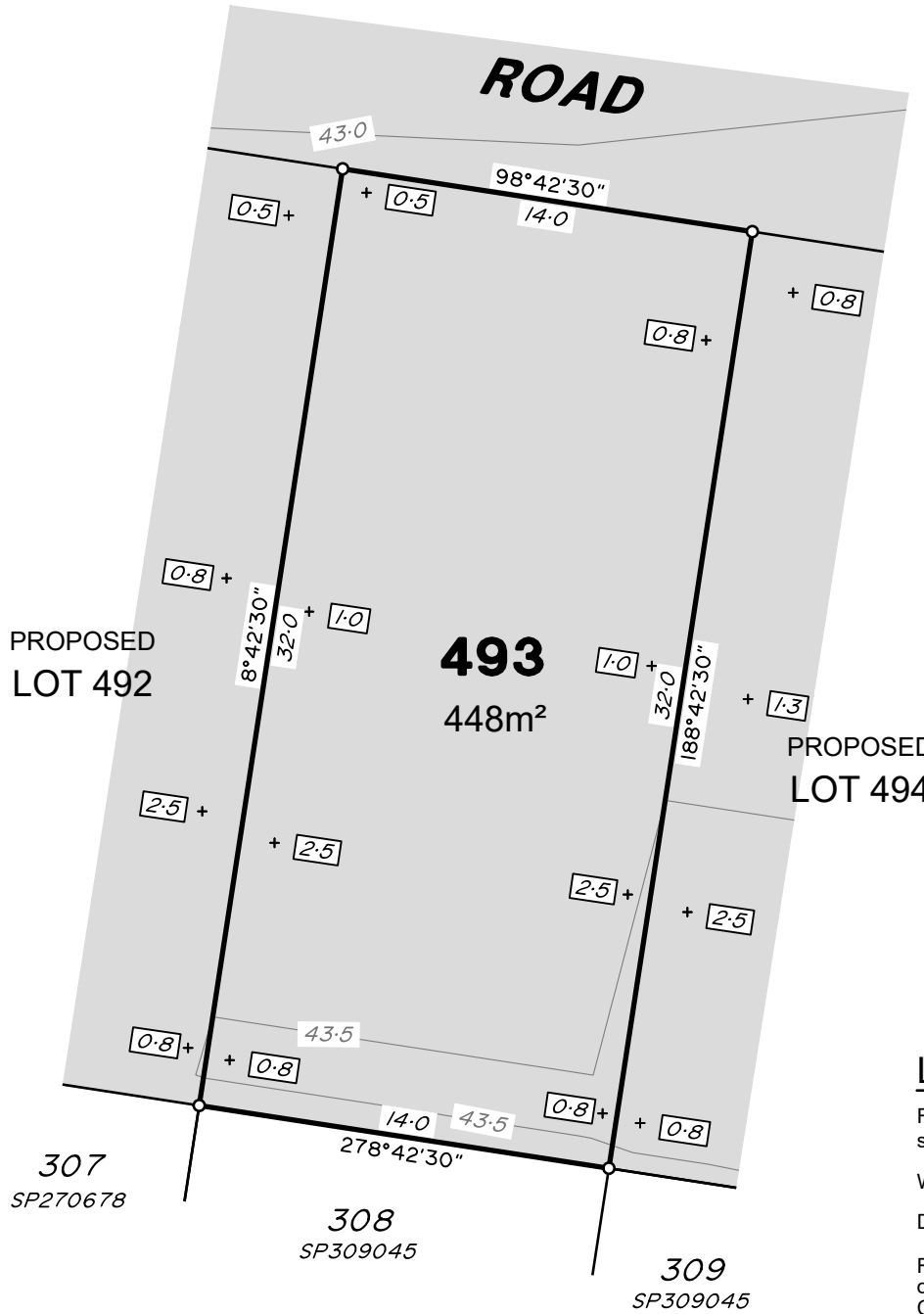
Where applicable, areas to be filled are shown as:

Depth of fill, in metres, shown as:- + 0.5

Retaining wall and retaining wall height, shown on the lower side of the wall, have been calculated from digital data supplied by Calbre Engineers and shown as:

(1.2)





ADDITIONAL NOTES:

The LOT dimensions and area shown hereon are subject to final field survey and also to the requirements of Council and any other authority which may have requirements under any relevant legislation

Final surface contours, fill areas, depth calcs & retaining walls shown hereon have been supplied by Calibre Engineers.

Compaction of any fill material placed on this site shall be completed to level one inspection and testing services in accordance with AS3798-2007.

Depth of fill values are calculated to the lower of the pre-development surface and the ground surface from Survey.

Copyright © Veris Australia Pty Ltd 27/05/2022.

Dawn
Walloon - Stage 6C2
For
ID_Land

IMPORTANT NOTES:
(These notes are an integral part of this plan)

This plan has been prepared for ID_LAND for the purposes of A Disclosure Plan Under the Land Sales Act 1984 (as amended).

It is not to be used by any other person or corporation or for any other purposes and is subject to the following limitations:

Please refer to the approved Development Application for conditions relating to the LOT and to approved Operational Works drawings for services location and possible easements.

THESE DESIGNS AND DRAWINGS ARE COPYRIGHT AND ARE NOT TO BE USED OR REPRODUCED WITHOUT THE WRITTEN PERMISSION OF VERIS

Data Sources

Cadastral Boundaries	401364-LC01-(K).dwg
Engineering Design	2022 X-21-001113.03_6C1C2_BASE.dwg
Final Surface Contours	20220513 Design contours Stg 6C1&C2.dwg
Pre-development Surface	20220513 Design tin Stg 6C1&C2.dwg

Issue	Revisions	Date	Drawn
A	Original	27.05.2022	BK

Locality:	Walloon
Local Authority:	Ipswich City Council
Horizontal Meridian:	MGA Zone 56
Vertical Level Datum:	*
Scale:	1:250 @ A4
Designed:	CALIBRE ENGINEERS
Drawn:	BK 27/05/2022
Checked:	DMC & KJJ 27/05/2022
Plot Date:	27 May, 2022
Computer File Ref:	401905-ST6C2-DP(A).dwg

DISCLOSURE PLAN
of Proposed LOT 493
being part of
Lot 1
on SP331771



veris

BRISBANE (07) 3686 4700 WHITSUNDAYS (07) 4945 6600

MACKAY (07) 4957 9700 CAIRNS (07) 4252 9400

veris.com.au
ACN 615 735 727
Veris Australia Pty Ltd

Drawing No
401905-DP- 493
Issue
A

LEGEND

Final surface contours based on A.H.D. datum at an interval of 0.5m, shown as: — 15.5 —

Where applicable, areas to be filled are shown as:

Depth of fill, in metres, shown as:- +0.5

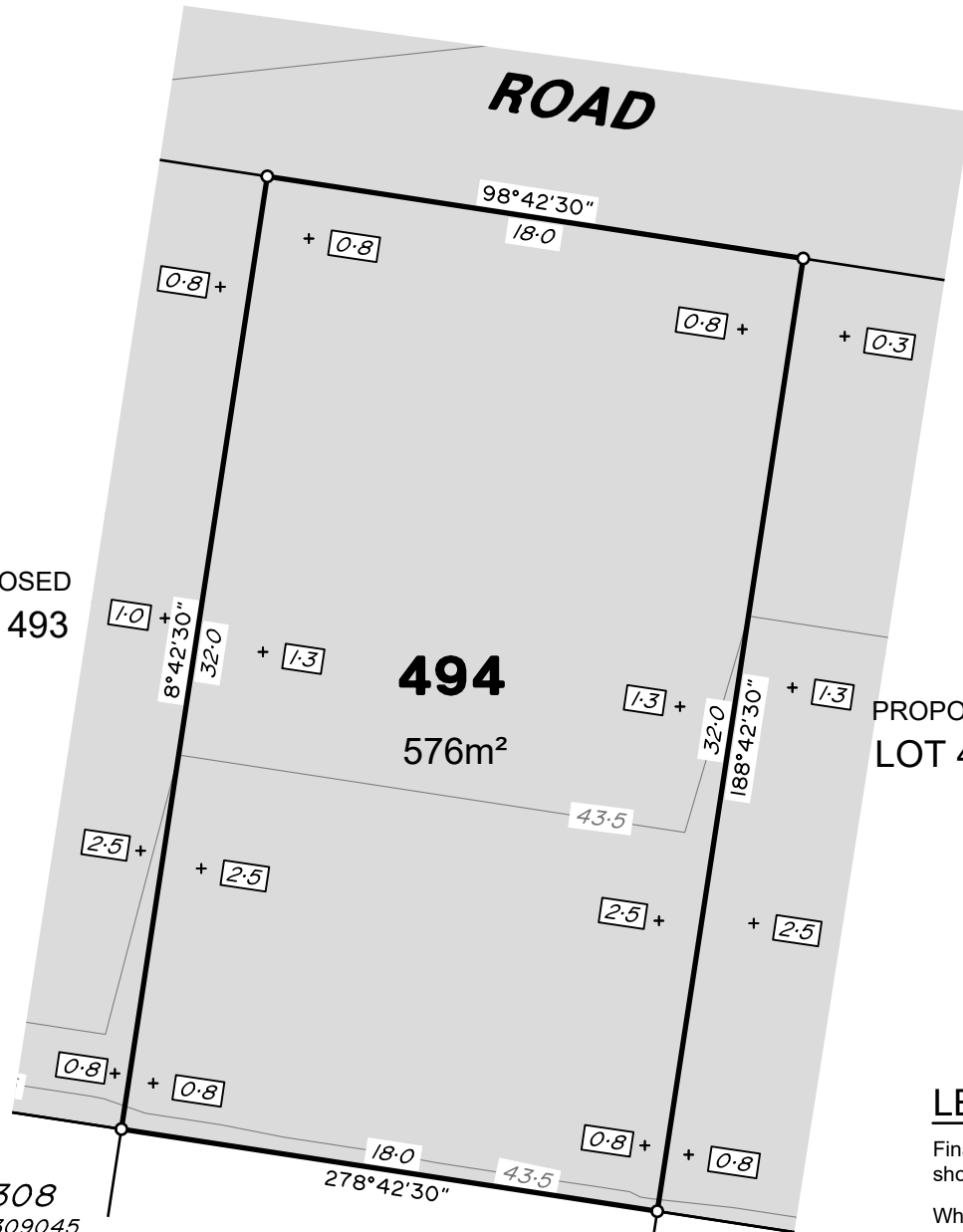
Retaining wall and retaining wall height, shown on the lower side of the wall, have been calculated from digital data supplied by Calbre Engineers and shown as:

(1.2)





PROPOSED LOT 493



PROPOSED LOT 495

308
SP309045

309
SP309045

310
SP303715

LEGEND

Final surface contours based on A.H.D. datum at an interval of 0.5m, shown as: 15.5

Where applicable, areas to be filled are shown as:

Depth of fill, in metres, shown as: - + 0.5

Retaining wall and retaining wall height, shown on the lower side of the wall, have been calculated from digital data supplied by Calbre Engineers and shown as: (1.2)

ADDITIONAL NOTES:

The LOT dimensions and area shown hereon are subject to final field survey and also to the requirements of Council and any other authority which may have requirements under any relevant legislation

Final surface contours, fill areas, depth calcs & retaining walls shown hereon have been supplied by Calibre Engineers.

Compaction of any fill material placed on this site shall be completed to level one inspection and testing services in accordance with AS3798-2007.

Depth of fill values are calculated to the lower of the pre-development surface and the ground surface from Survey.

Copyright © Veris Australia Pty Ltd 27/05/2022.

Dawn
Walloon - Stage 6C2
For
ID_Land

IMPORTANT NOTES:
(These notes are an integral part of this plan)

This plan has been prepared for ID_LAND for the purposes of A Disclosure Plan Under the Land Sales Act 1984 (as amended).

It is not to be used by any other person or corporation or for any other purposes and is subject to the following limitations:

Please refer to the approved Development Application for conditions relating to the LOT and to approved Operational Works drawings for services location and possible easements.

THESE DESIGNS AND DRAWINGS ARE COPYRIGHT AND ARE NOT TO BE USED OR REPRODUCED WITHOUT THE WRITTEN PERMISSION OF VERIS

Data Sources	
Cadastral Boundaries	401364-LC01-(K).dwg
Engineering Design	2022 X-21-000113.03_6C1C2_BASE.dwg
Final Surface Contours	20220513 Design contours Stg 6C1&C2.dwg
Pre-development Surface	20220513 Design tin Stg 6C1&C2.dwg

Issue	Revisions	Date	Drawn
A	Original	27.05.2022	BK

Locality:	Walloon
Local Authority:	Ipswich City Council
Horizontal Meridian:	MGA Zone 56
Vertical Level Datum:	*
Scale:	1:250 @ A4
Designed:	CALIBRE ENGINEERS
Drawn:	BK 27/05/2022
Checked:	DMC & KJJ 27/05/2022
Plot Date:	27 May, 2022
Computer File Ref: 401905-ST6C2-DP(A).dwg	

DISCLOSURE PLAN
of Proposed LOT 494
being part of
Lot 1
on SP331771



veris

BRISBANE (07) 3686 4700 WHITSUNDAYS (07) 4945 6600

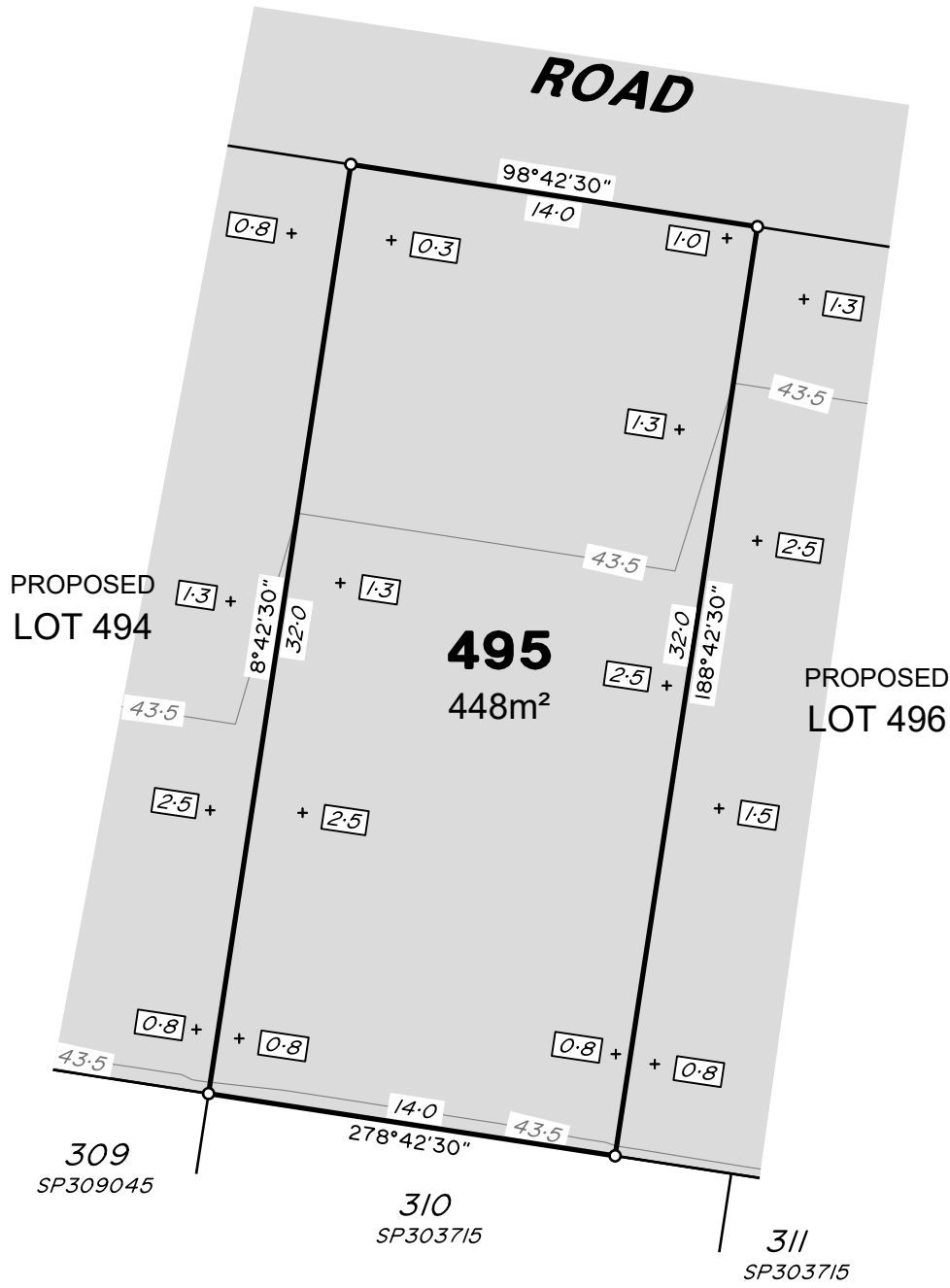
MACKAY (07) 4957 9700 CAIRNS (07) 4252 9400

veris.com.au
ACN 615 735 727
Veris Australia Pty Ltd

Drawing No
401905-DP- 494

Issue
A



**ADDITIONAL NOTES:**

The LOT dimensions and area shown hereon are subject to final field survey and also to the requirements of Council and any other authority which may have requirements under any relevant legislation

Final surface contours, fill areas, depth calcs & retaining walls shown hereon have been supplied by Calibre Engineers.

Compaction of any fill material placed on this site shall be completed to level one inspection and testing services in accordance with AS3798-2007.

Depth of fill values are calculated to the lower of the pre-development surface and the ground surface from Survey.

Copyright © Veris Australia Pty Ltd 27/05/2022.

Dawn
Walloon - Stage 6C2
For
ID_Land

IMPORTANT NOTES:
(These notes are an integral part of this plan)

This plan has been prepared for ID_LAND for the purposes of A Disclosure Plan Under the Land Sales Act 1984 (as amended).

It is not to be used by any other person or corporation or for any other purposes and is subject to the following limitations:

Please refer to the approved Development Application for conditions relating to the LOT and to approved Operational Works drawings for services location and possible easements.

THESE DESIGNS AND DRAWINGS ARE COPYRIGHT AND ARE NOT TO BE USED OR REPRODUCED WITHOUT THE WRITTEN PERMISSION OF VERIS

Data Sources

Cadastral Boundaries 401364-LC01-(K).dwg
Engineering Design 2022 X-21-000113.03_6C1C2_BASE.dwg
Final Surface Contours 20220513 Design contours Stg 6C1&C2.dwg
Pre-development Surface 20220513 Design tin Stg 6C1&C2.dwg

Issue	Revisions	Date	Drawn
A	Original	27.05.2022	BK

Locality: Walloon
Local Authority: Ipswich City Council
Horizontal Meridian: MGA Zone 56
Vertical Level Datum: *
Scale: 1:250 @ A4
Designed: CALIBRE ENGINEERS
Drawn: BK 27/05/2022
Checked: DMC & KJJ 27/05/2022
Plot Date: 27 May, 2022
Computer File Ref: 401905-ST6C2-DP(A).dwg

DISCLOSURE PLAN
of Proposed LOT 495
being part of
Lot 1
on SP331771



veris

BRISBANE (07) 3686 4700 WHITSUNDAYS (07) 4945 6600

MACKAY (07) 4957 9700 CAIRNS (07) 4252 9400

veris.com.au
ACN 615 735 727
Veris Australia Pty Ltd

Drawing No 401905-DP- 495 Issue A

LEGEND

Final surface contours based on A.H.D. datum at an interval of 0.5m, shown as: 15.5

Where applicable, areas to be filled are shown as:

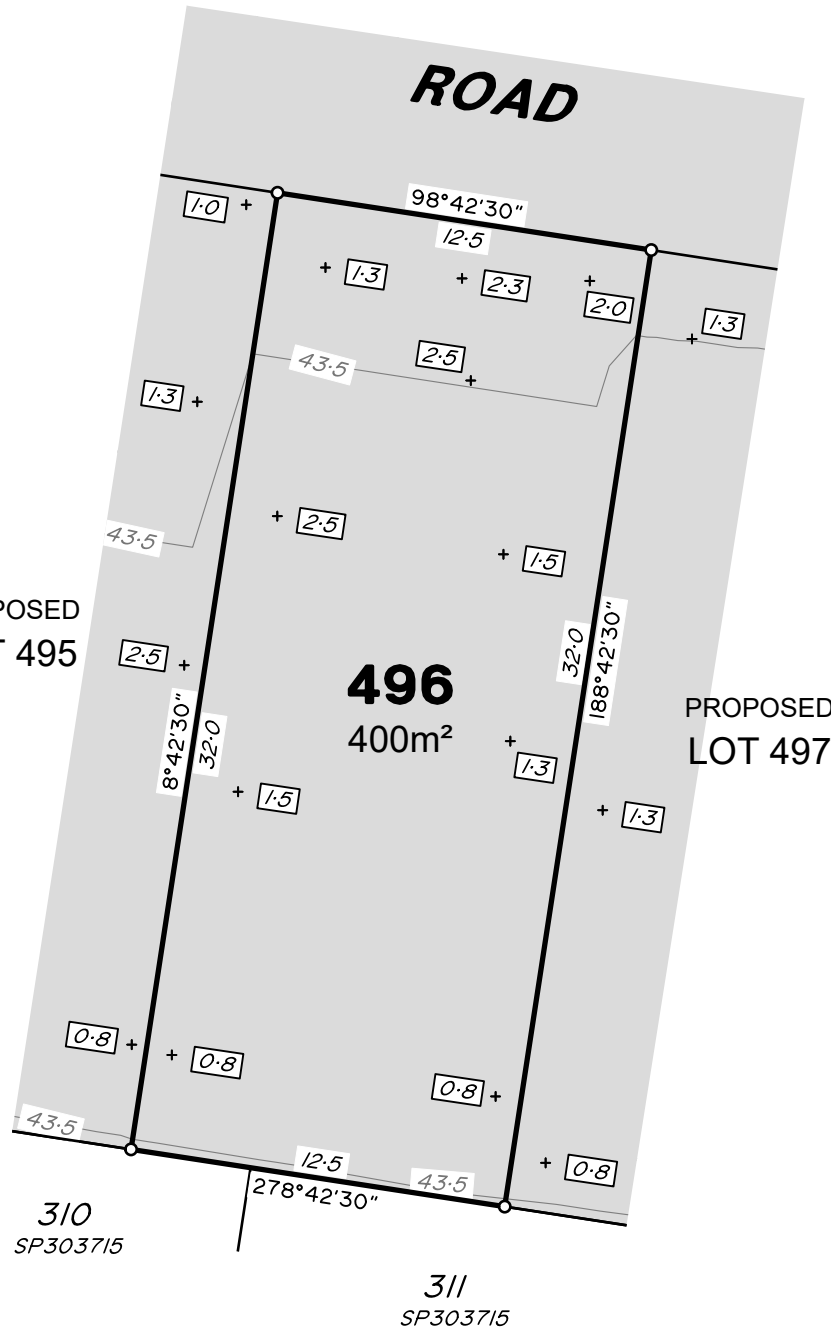
Depth of fill, in metres, shown as:- + 0.5

Retaining wall and retaining wall height, shown on the lower side of the wall, have been calculated from digital data supplied by Calbre Engineers and shown as: (1.2)





PROPOSED LOT 495



PROPOSED LOT 497

496
400m²

310
SP303715

311
SP303715

LEGEND

Final surface contours based on A.H.D. datum at an interval of 0.5m, shown as: 15.5

Where applicable, areas to be filled are shown as:

Depth of fill, in metres, shown as: - +

Retaining wall and retaining wall height, shown on the lower side of the wall, have been calculated from digital data supplied by Calbre Engineers and shown as:

(1.2)

ADDITIONAL NOTES:

The LOT dimensions and area shown hereon are subject to final field survey and also to the requirements of Council and any other authority which may have requirements under any relevant legislation

Final surface contours, fill areas, depth calcs & retaining walls shown hereon have been supplied by Calibre Engineers.

Compaction of any fill material placed on this site shall be completed to level one inspection and testing services in accordance with AS3798-2007.

Depth of fill values are calculated to the lower of the pre-development surface and the ground surface from Survey.

Copyright © Veris Australia Pty Ltd 27/05/2022.

Dawn
Walloon - Stage 6C2
For
ID_Land

IMPORTANT NOTES:
(These notes are an integral part of this plan)

This plan has been prepared for ID_LAND for the purposes of A Disclosure Plan Under the Land Sales Act 1984 (as amended).

It is not to be used by any other person or corporation or for any other purposes and is subject to the following limitations:

Please refer to the approved Development Application for conditions relating to the LOT and to approved Operational Works drawings for services location and possible easements.

THESE DESIGNS AND DRAWINGS ARE COPYRIGHT AND ARE NOT TO BE USED OR REPRODUCED WITHOUT THE WRITTEN PERMISSION OF VERIS

Data Sources

Cadastral Boundaries	401364-LC01-(K).dwg
Engineering Design	2022 X-21-000113.03_6C1C2_BASE.dwg
Final Surface Contours	20220513 Design contours Stg 6C1&C2.dwg
Pre-development Surface	20220513 Design tin Stg 6C1&C2.dwg

A	Original	27.05.2022	BK
Issue	Revisions	Date	Drawn

Locality: Walloon
 Local Authority: Ipswich City Council
 Horizontal Meridian: MGA Zone 56
 Vertical Level Datum: *
 Scale: 1:250 @ A4
 Designed: CALIBRE ENGINEERS
 Drawn: BK 27/05/2022
 Checked: DMC & KJJ 27/05/2022
 Plot Date: 27 May, 2022
 Computer File Ref: 401905-ST6C2-DP(A).dwg

DISCLOSURE PLAN
of Proposed LOT 496
being part of
Lot 1
on SP331771



veris

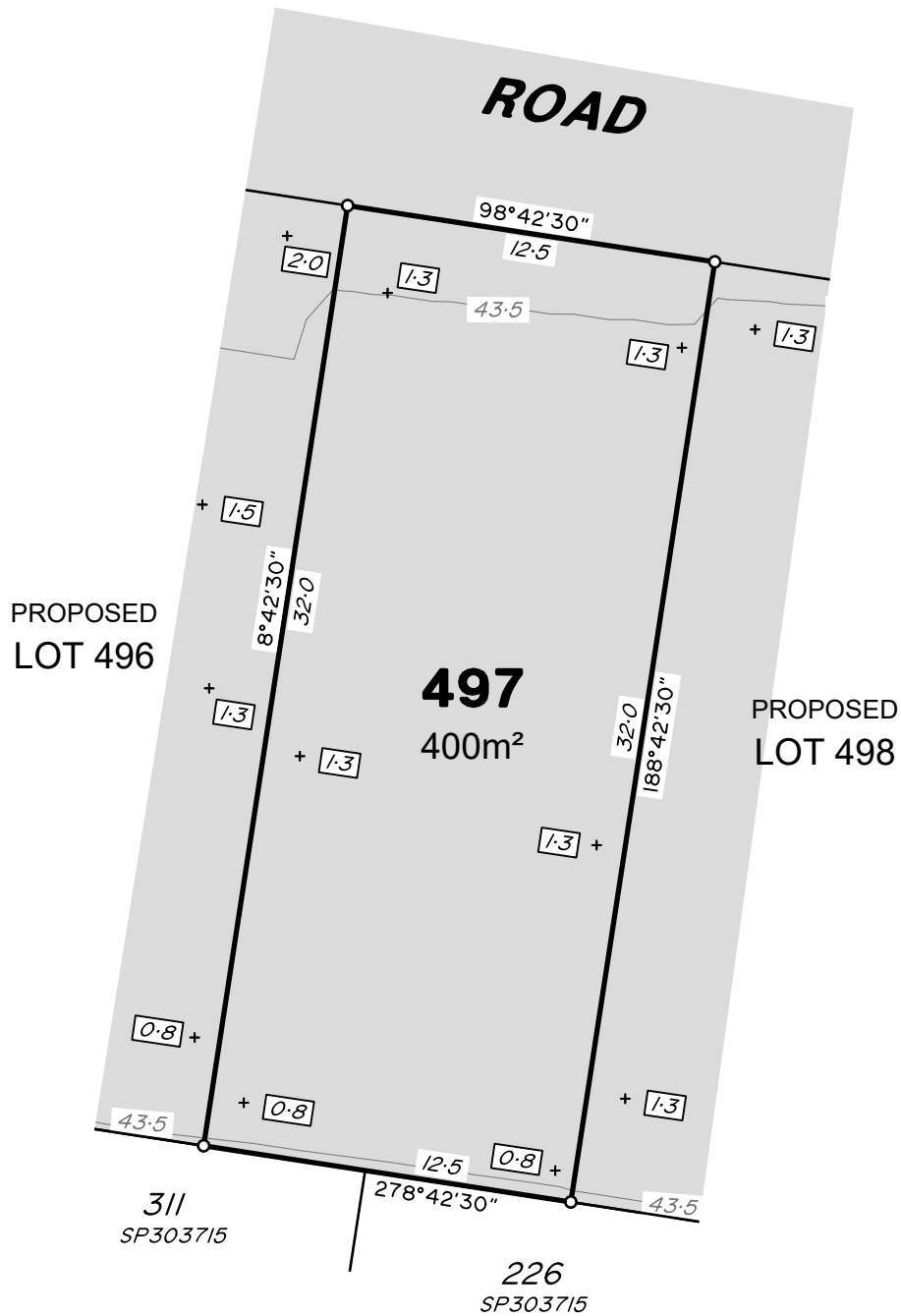
BRISBANE (07) 3686 4700 WHITSUNDAYS (07) 4945 6600

MACKAY (07) 4957 9700 CAIRNS (07) 4252 9400

veris.com.au
ACN 615 735 727
Veris Australia Pty Ltd

Drawing No 401905-DP- 496 Issue A





ADDITIONAL NOTES:

The LOT dimensions and area shown hereon are subject to final field survey and also to the requirements of Council and any other authority which may have requirements under any relevant legislation

Final surface contours, fill areas, depth calcs & retaining walls shown hereon have been supplied by Calibre Engineers.

Compaction of any fill material placed on this site shall be completed to level one inspection and testing services in accordance with AS3798-2007.

Depth of fill values are calculated to the lower of the pre-development surface and the ground surface from Survey.

Copyright © Veris Australia Pty Ltd 27/05/2022.

Dawn
Walloon - Stage 6C2
For
ID_Land

IMPORTANT NOTES:
(These notes are an integral part of this plan)

This plan has been prepared for ID_LAND for the purposes of A Disclosure Plan Under the Land Sales Act 1984 (as amended).

It is not to be used by any other person or corporation or for any other purposes and is subject to the following limitations:

Please refer to the approved Development Application for conditions relating to the LOT and to approved Operational Works drawings for services location and possible easements.

THESE DESIGNS AND DRAWINGS ARE COPYRIGHT AND ARE NOT TO BE USED OR REPRODUCED WITHOUT THE WRITTEN PERMISSION OF VERIS

Data Sources	
Cadastral Boundaries	401364-LC01-(K).dwg
Engineering Design	2022 X-21-001113.03_6C1C2_BASE.dwg
Final Surface Contours	20220513 Design contours Stg 6C1&C2.dwg
Pre-development Surface	20220513 Design tin Stg 6C1&C2.dwg

Issue	Revisions	Date	Drawn
A	Original	27.05.2022	BK

Locality:	Walloon
Local Authority:	Ipswich City Council
Horizontal Meridian:	MGA Zone 56
Vertical Level Datum:	*
Scale:	1:250 @ A4
Designed:	CALIBRE ENGINEERS
Drawn:	BK 27/05/2022
Checked:	DMC & KJJ 27/05/2022
Plot Date:	27 May, 2022
Computer File Ref: 401905-ST6C2-DP(A).dwg	

DISCLOSURE PLAN
of Proposed LOT 497
being part of
Lot 1
on SP331771



veris

BRISBANE (07) 3686 4700 WHITSUNDAYS (07) 4945 6600

MACKAY (07) 4957 9700 CAIRNS (07) 4252 9400

veris.com.au
ACN 615 735 727
Veris Australia Pty Ltd

Drawing No Issue
401905-DP- 497 A

LEGEND

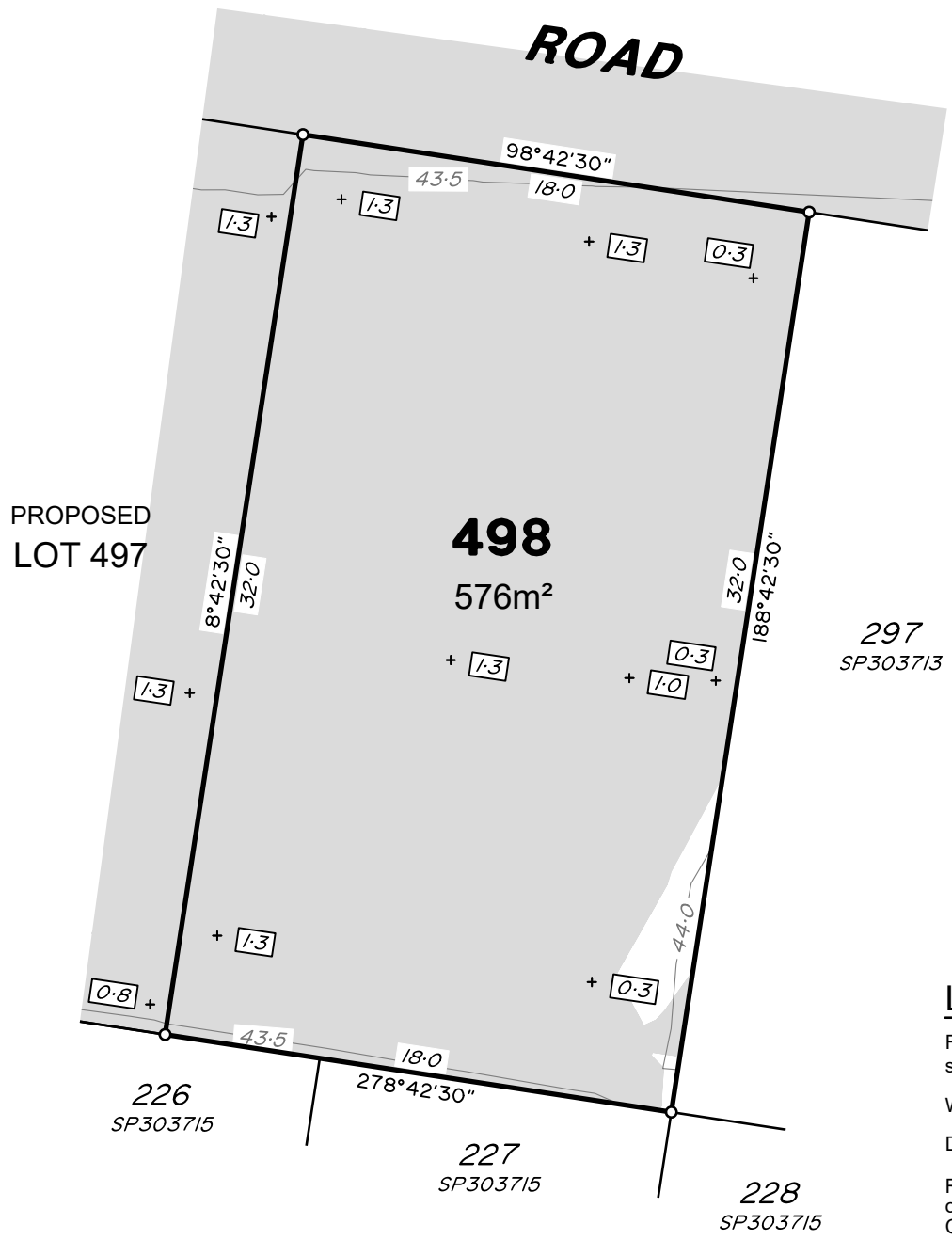
Final surface contours based on A.H.D. datum at an interval of 0.5m, shown as: — 15.5 —

Where applicable, areas to be filled are shown as:

Depth of fill, in metres, shown as: - + 0.5

Retaining wall and retaining wall height, shown on the lower side of the wall, have been calculated from digital data supplied by Calbre Engineers and shown as:

(1.2)

**ADDITIONAL NOTES:**

The LOT dimensions and area shown hereon are subject to final field survey and also to the requirements of Council and any other authority which may have requirements under any relevant legislation

Final surface contours, fill areas, depth calcs & retaining walls shown hereon have been supplied by Calibre Engineers.

Compaction of any fill material placed on this site shall be completed to level one inspection and testing services in accordance with AS3798-2007.

Depth of fill values are calculated to the lower of the pre-development surface and the ground surface from Survey.

Copyright © Veris Australia Pty Ltd 27/05/2022.

Dawn
Walloon - Stage 6C2
For
ID_Land

IMPORTANT NOTES:
(These notes are an integral part of this plan)

This plan has been prepared for ID_LAND for the purposes of A Disclosure Plan Under the Land Sales Act 1984 (as amended).

It is not to be used by any other person or corporation or for any other purposes and is subject to the following limitations:

Please refer to the approved Development Application for conditions relating to the LOT and to approved Operational Works drawings for services location and possible easements.

THESE DESIGNS AND DRAWINGS ARE COPYRIGHT AND ARE NOT TO BE USED OR REPRODUCED WITHOUT THE WRITTEN PERMISSION OF VERIS

Data Sources

Cadastral Boundaries 401364-LC01-(K).dwg
Engineering Design 2022 X-21-000113.03_6C1C2_BASE.dwg
Final Surface Contours 20220513 Design contours Stg 6C1&C2.dwg
Pre-development Surface 20220513 Design tin Stg 6C1&C2.dwg

Issue	Revisions	Date	Drawn
A	Original	27.05.2022	BK

Locality: Walloon
Local Authority: Ipswich City Council
Horizontal Meridian: MGA Zone 56
Vertical Level Datum: *
Scale: 1:250 @ A4
Designed: CALIBRE ENGINEERS
Drawn: BK 27/05/2022
Checked: DMC & KJJ 27/05/2022
Plot Date: 27 May, 2022
Computer File Ref: 401905-ST6C2-DP(A).dwg

DISCLOSURE PLAN
of Proposed LOT 498
being part of
Lot 1
on SP331771



veris

BRISBANE (07) 3686 4700 WHITSUNDAYS (07) 4945 6600

MACKAY (07) 4957 9700 CAIRNS (07) 4252 9400

veris.com.au
ACN 615 735 727
Veris Australia Pty Ltd

Drawing No 401905-DP- 498 Issue A

LEGEND

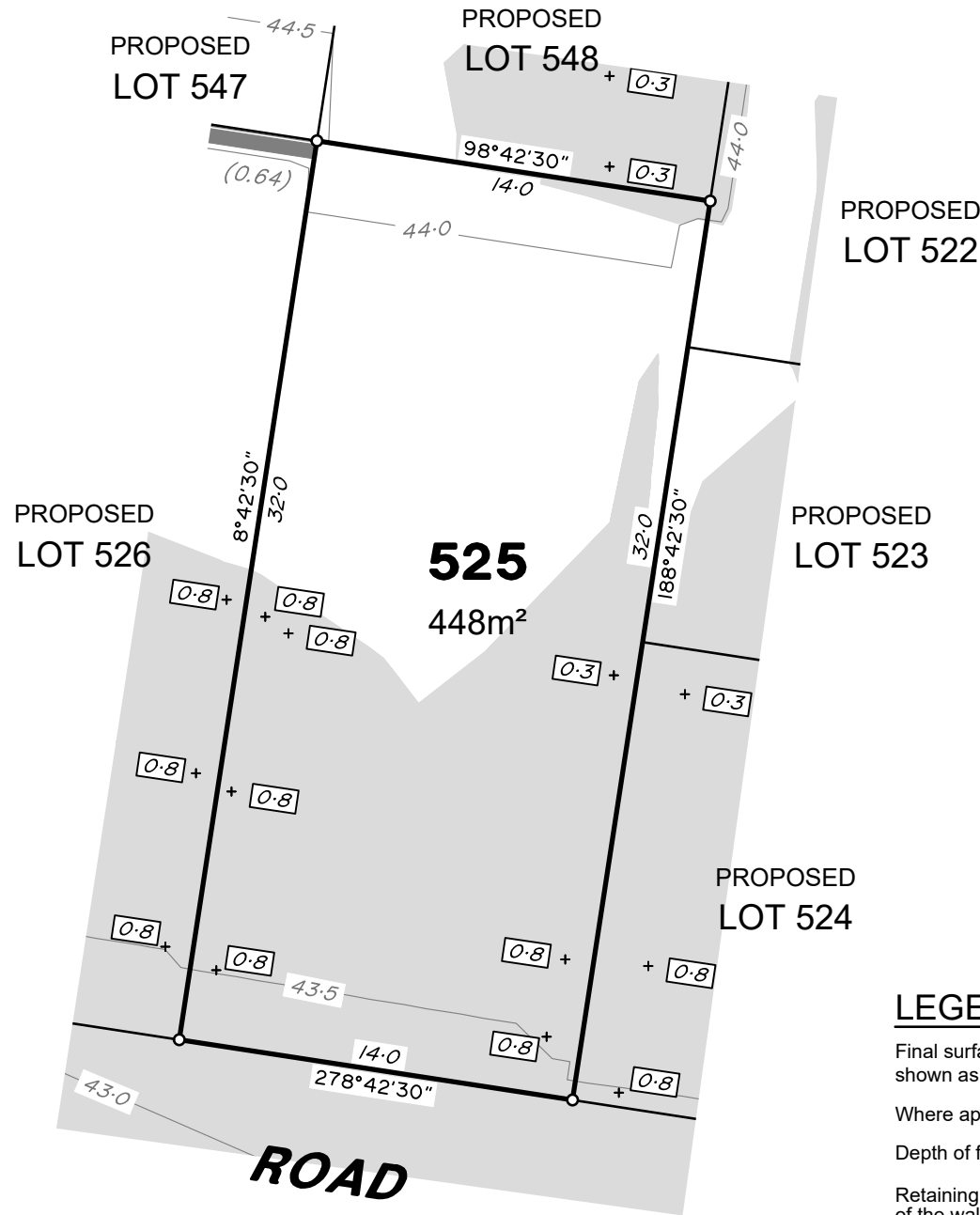
Final surface contours based on A.H.D. datum at an interval of 0.5m, shown as: 15.5

Where applicable, areas to be filled are shown as:

Depth of fill, in metres, shown as:- + 0.5

Retaining wall and retaining wall height, shown on the lower side of the wall, have been calculated from digital data supplied by Calbre Engineers and shown as: (1.2)





ADDITIONAL NOTES:

The LOT dimensions and area shown hereon are subject to final field survey and also to the requirements of Council and any other authority which may have requirements under any relevant legislation

Final surface contours, fill areas, depth calcs & retaining walls shown hereon have been supplied by Calibre Engineers.

Compaction of any fill material placed on this site shall be completed to level one inspection and testing services in accordance with AS3798-2007.

Depth of fill values are calculated to the lower of the pre-development surface and the ground surface from Survey.

Copyright © Veris Australia Pty Ltd 27/05/2022.

Dawn
Walloon - Stage 6C2
For
ID_Land

IMPORTANT NOTES:
(These notes are an integral part of this plan)

This plan has been prepared for ID_LAND for the purposes of A Disclosure Plan Under the Land Sales Act 1984 (as amended).

It is not to be used by any other person or corporation or for any other purposes and is subject to the following limitations:

Please refer to the approved Development Application for conditions relating to the LOT and to approved Operational Works drawings for services location and possible easements.

THESE DESIGNS AND DRAWINGS ARE COPYRIGHT AND ARE NOT TO BE USED OR REPRODUCED WITHOUT THE WRITTEN PERMISSION OF VERIS

Data Sources

Cadastral Boundaries	401364-LC01-(K).dwg
Engineering Design	2022 X-21-000113.03_6C1C2_BASE.dwg
Final Surface Contours	20220513 Design contours Stg 6C1&C2.dwg
Pre-development Surface	20220513 Design tin Stg 6C1&C2.dwg

A	Original	27.05.2022	BK
Issue	Revisions	Date	Drawn

Locality:	Walloon
Local Authority:	Ipswich City Council
Horizontal Meridian:	MGA Zone 56
Vertical Level Datum:	*
Scale:	1:250 @ A4
Designed:	CALIBRE ENGINEERS
Drawn:	BK 27/05/2022
Checked:	DMC & KJJ 27/05/2022
Plot Date:	27 May, 2022
Computer File Ref:	401905-ST6C2-DP(A).dwg

DISCLOSURE PLAN
of Proposed LOT 525
being part of
Lot 1
on SP331771



BRISBANE (07) 3686 4700 WHITSUNDAYS (07) 4945 6600

MACKAY (07) 4957 9700 CAIRNS (07) 4252 9400

veris.com.au
ACN 615 735 727
Veris Australia Pty Ltd

Drawing No
401905-DP- 525
Issue
A

LEGEND

Final surface contours based on A.H.D. datum at an interval of 0.5m, shown as: 15.5

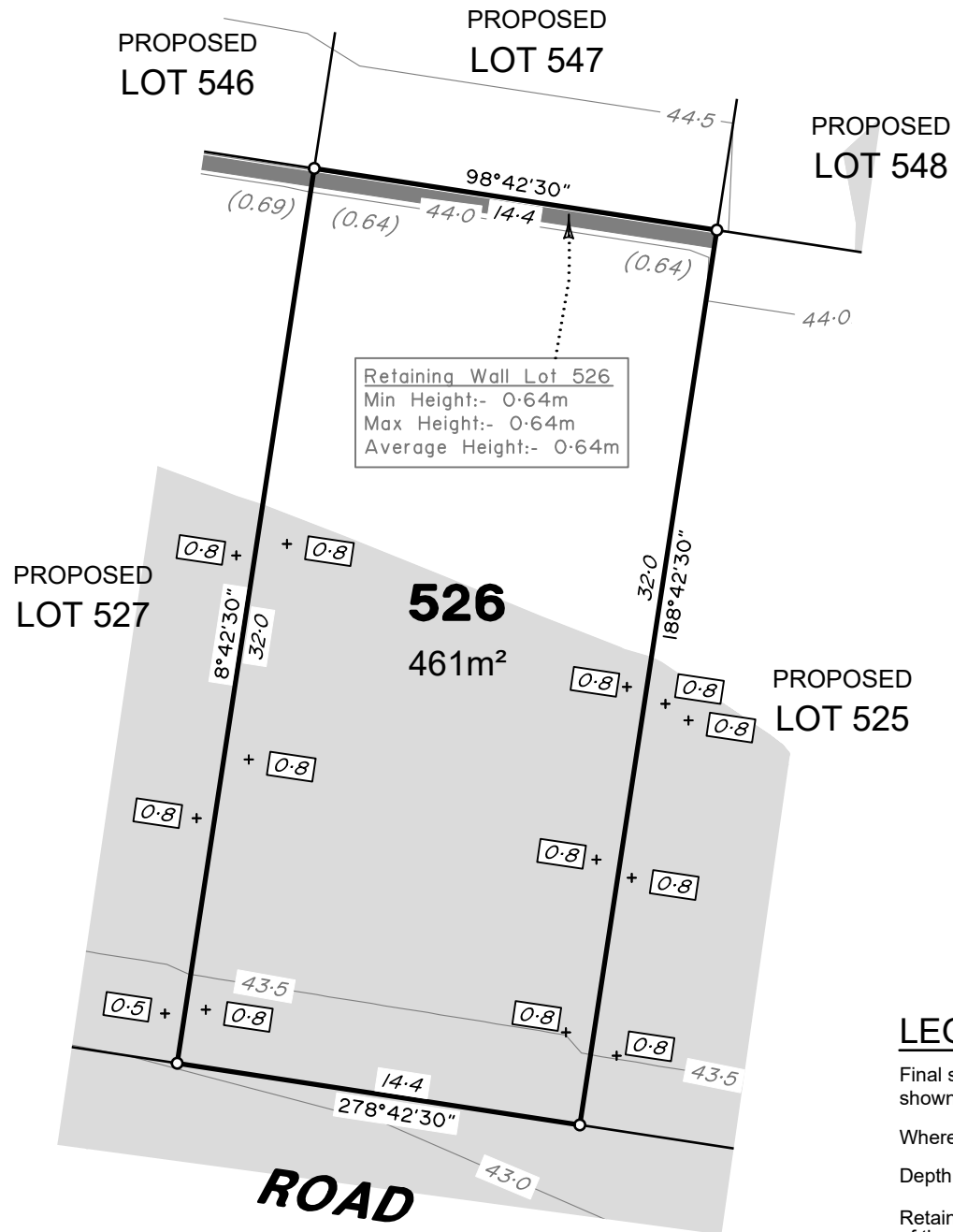
Where applicable, areas to be filled are shown as:

Depth of fill, in metres, shown as:- +

Retaining wall and retaining wall height, shown on the lower side of the wall, have been calculated from digital data supplied by Calbre Engineers and shown as:

(1.2)





ADDITIONAL NOTES:

The LOT dimensions and area shown hereon are subject to final field survey and also to the requirements of Council and any other authority which may have requirements under any relevant legislation

Final surface contours, fill areas, depth calcs & retaining walls shown hereon have been supplied by Calibre Engineers.

Compaction of any fill material placed on this site shall be completed to level one inspection and testing services in accordance with AS3798-2007.

Depth of fill values are calculated to the lower of the pre-development surface and the ground surface from Survey.

Copyright © Veris Australia Pty Ltd 27/05/2022.

Dawn
Walloon - Stage 6C2
For
ID_Land

IMPORTANT NOTES:
(These notes are an integral part of this plan)

This plan has been prepared for ID_LAND for the purposes of A Disclosure Plan Under the Land Sales Act 1984 (as amended).

It is not to be used by any other person or corporation or for any other purposes and is subject to the following limitations:

Please refer to the approved Development Application for conditions relating to the LOT and to approved Operational Works drawings for services location and possible easements.

THESE DESIGNS AND DRAWINGS ARE COPYRIGHT AND ARE NOT TO BE USED OR REPRODUCED WITHOUT THE WRITTEN PERMISSION OF VERIS

Data Sources

Cadastral Boundaries	401364-LC01-(K).dwg
Engineering Design	2022 X-21-000113.03_6C1C2_BASE.dwg
Final Surface Contours	20220513 Design contours Stg 6C1&C2.dwg
Pre-development Surface	20220513 Design tin Stg 6C1&C2.dwg

Issue	Revisions	Date	Drawn
A	Original	27.05.2022	BK

Locality:	Walloon
Local Authority:	Ipswich City Council
Horizontal Meridian:	MGA Zone 56
Vertical Level Datum:	*
Scale:	1:250 @ A4
Designed:	CALIBRE ENGINEERS
Drawn:	BK 27/05/2022
Checked:	DMC & KJJ 27/05/2022
Plot Date:	27 May, 2022
Computer File Ref:	401905-ST6C2-DP(A).dwg

DISCLOSURE PLAN
of Proposed LOT 526
being part of
Lot 1
on SP331771



BRISBANE (07) 3686 4700 WHITSUNDAYS (07) 4945 6600

MACKAY (07) 4957 9700 CAIRNS (07) 4252 9400

veris.com.au
ACN 615 735 727
Veris Australia Pty Ltd

Drawing No 401905-DP- 526 Issue A





PROPOSED
LOT 545

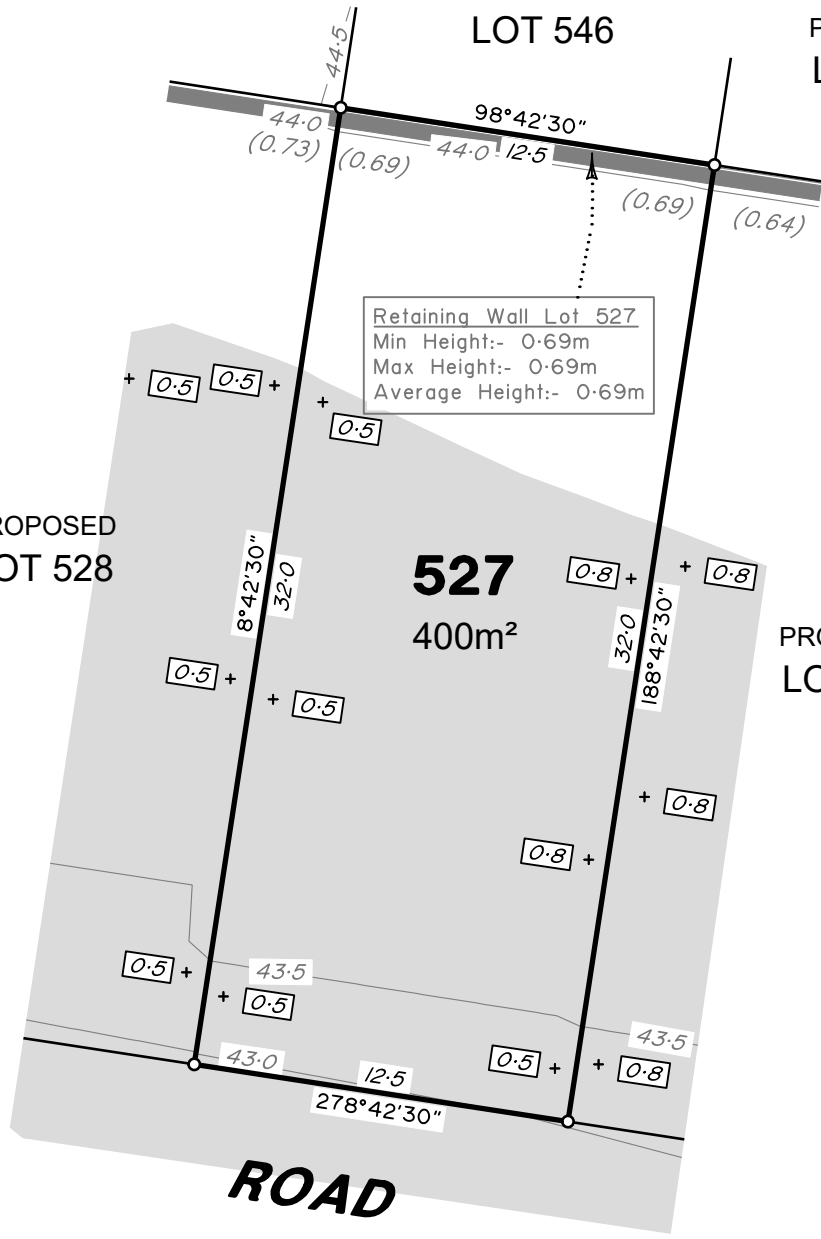
PROPOSED
LOT 546

PROPOSED
LOT 547

PROPOSED
LOT 528

527
400m²

PROPOSED
LOT 526



ADDITIONAL NOTES:

The LOT dimensions and area shown hereon are subject to final field survey and also to the requirements of Council and any other authority which may have requirements under any relevant legislation

Final surface contours, fill areas, depth calcs & retaining walls shown hereon have been supplied by Calbre Engineers.

Compaction of any fill material placed on this site shall be completed to level one inspection and testing services in accordance with AS3798-2007.

Depth of fill values are calculated to the lower of the pre-development surface and the ground surface from Survey.

Copyright © Veris Australia Pty Ltd 27/05/2022.

Dawn
Walloon - Stage 6C2
For
ID_Land

IMPORTANT NOTES:
(These notes are an integral part of this plan)

This plan has been prepared for ID_LAND for the purposes of A Disclosure Plan Under the Land Sales Act 1984 (as amended).

It is not to be used by any other person or corporation or for any other purposes and is subject to the following limitations:

Please refer to the approved Development Application for conditions relating to the LOT and to approved Operational Works drawings for services location and possible easements.

THESE DESIGNS AND DRAWINGS ARE COPYRIGHT AND ARE NOT TO BE USED OR REPRODUCED WITHOUT THE WRITTEN PERMISSION OF VERIS

Data Sources

Cadastral Boundaries	401364-LC01-(K).dwg
Engineering Design	2022 X-21-000113.03_6C1C2_BASE.dwg
Final Surface Contours	20220513 Design contours Stg 6C1&C2.dwg
Pre-development Surface	20220513 Design tin Stg 6C1&C2.dwg

Issue	Revisions	Date	Drawn
A	Original	27.05.2022	BK

Locality: Walloon
Local Authority: Ipswich City Council
Horizontal Meridian: MGA Zone 56
Vertical Level Datum: *
Scale: 1:250 @ A4
Designed: CALBRE ENGINEERS
Drawn: BK 27/05/2022
Checked: DMC & KJJ 27/05/2022
Plot Date: 27 May, 2022
Computer File Ref: 401905-ST6C2-DP(A).dwg

DISCLOSURE PLAN
of Proposed LOT 527
being part of
Lot 1
on SP331771



veris

BRISBANE (07) 3686 4700 WHITSUNDAYS (07) 4945 6600

MACKAY (07) 4957 9700 CAIRNS (07) 4252 9400

veris.com.au
ACN 615 735 727
Veris Australia Pty Ltd

Drawing No 401905-DP- 527 Issue A



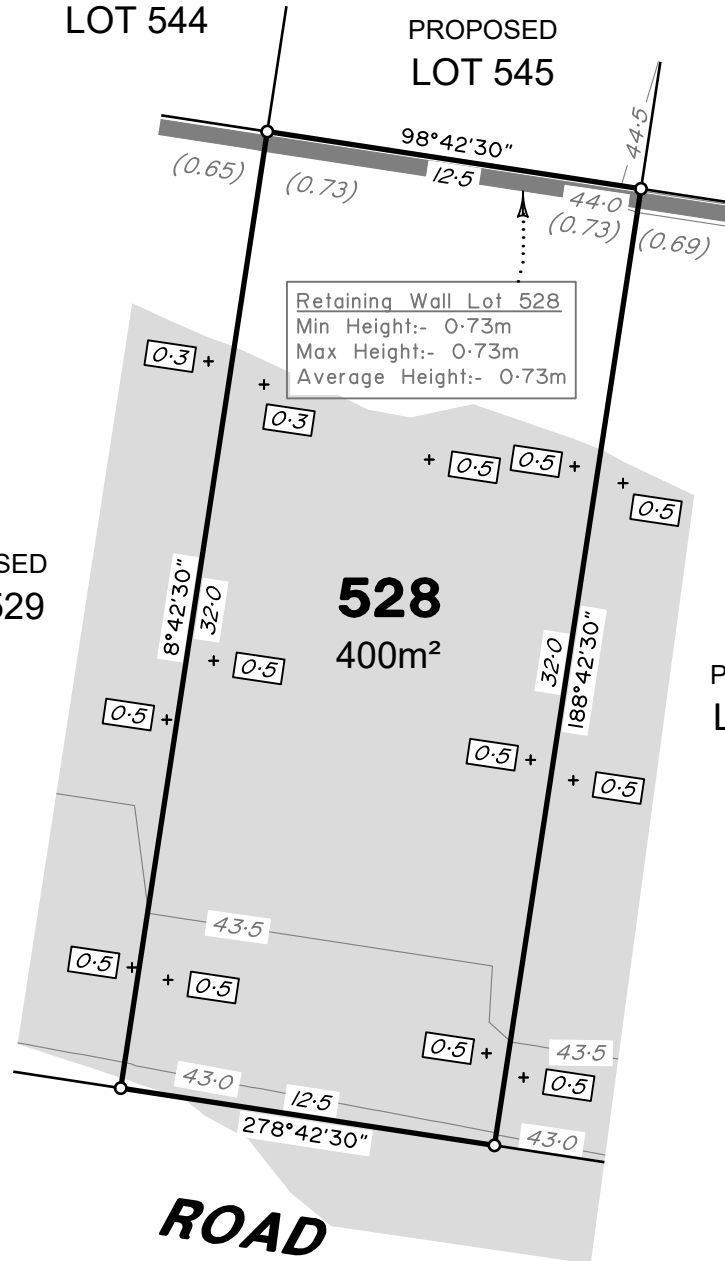
PROPOSED
LOT 544

PROPOSED
LOT 545

PROPOSED
LOT 546

PROPOSED
LOT 529

PROPOSED
LOT 527



ADDITIONAL NOTES:

The LOT dimensions and area shown hereon are subject to final field survey and also to the requirements of Council and any other authority which may have requirements under any relevant legislation

Final surface contours, fill areas, depth calcs & retaining walls shown hereon have been supplied by Calibre Engineers.

Compaction of any fill material placed on this site shall be completed to level one inspection and testing services in accordance with AS3798-2007.

Depth of fill values are calculated to the lower of the pre-development surface and the ground surface from Survey.

Copyright © Veris Australia Pty Ltd 27/05/2022.

Dawn
Walloon - Stage 6C2
For
ID_Land

IMPORTANT NOTES:
(These notes are an integral part of this plan)

This plan has been prepared for ID_LAND for the purposes of A Disclosure Plan Under the Land Sales Act 1984 (as amended).

It is not to be used by any other person or corporation or for any other purposes and is subject to the following limitations:

Please refer to the approved Development Application for conditions relating to the LOT and to approved Operational Works drawings for services location and possible easements.

THESE DESIGNS AND DRAWINGS ARE COPYRIGHT AND ARE NOT TO BE USED OR REPRODUCED WITHOUT THE WRITTEN PERMISSION OF VERIS

Data Sources

Cadastral Boundaries	401364-LC01-(K).dwg
Engineering Design	2022 X-21-001113.03_6C1C2_BASE.dwg
Final Surface Contours	20220513 Design contours Stg 6C1&C2.dwg
Pre-development Surface	20220513 Design tin Stg 6C1&C2.dwg

Issue	Revisions	Date	Drawn
A	Original	27.05.2022	BK

Locality:	Walloon
Local Authority:	Ipswich City Council
Horizontal Meridian:	MGA Zone 56
Vertical Level Datum:	*
Scale:	1:250 @ A4
Designed:	CALIBRE ENGINEERS
Drawn:	BK 27/05/2022
Checked:	DMC & KJJ 27/05/2022
Plot Date:	27 May, 2022
Computer File Ref:	401905-ST6C2-DP(A).dwg

DISCLOSURE PLAN
of Proposed LOT 528
being part of
Lot 1
on SP331771



veris

BRISBANE (07) 3686 4700 WHITSUNDAYS (07) 4945 6600

MACKAY (07) 4957 9700 CAIRNS (07) 4252 9400

veris.com.au
ACN 615 735 727
Veris Australia Pty Ltd

Drawing No
401905-DP- 528
Issue
A

LEGEND

Final surface contours based on A.H.D. datum at an interval of 0.5m, shown as: — 15.5 —

Where applicable, areas to be filled are shown as:

Depth of fill, in metres, shown as:- +0.5

Retaining wall and retaining wall height, shown on the lower side of the wall, have been calculated from digital data supplied by Calbre Engineers and shown as:

(1.2)



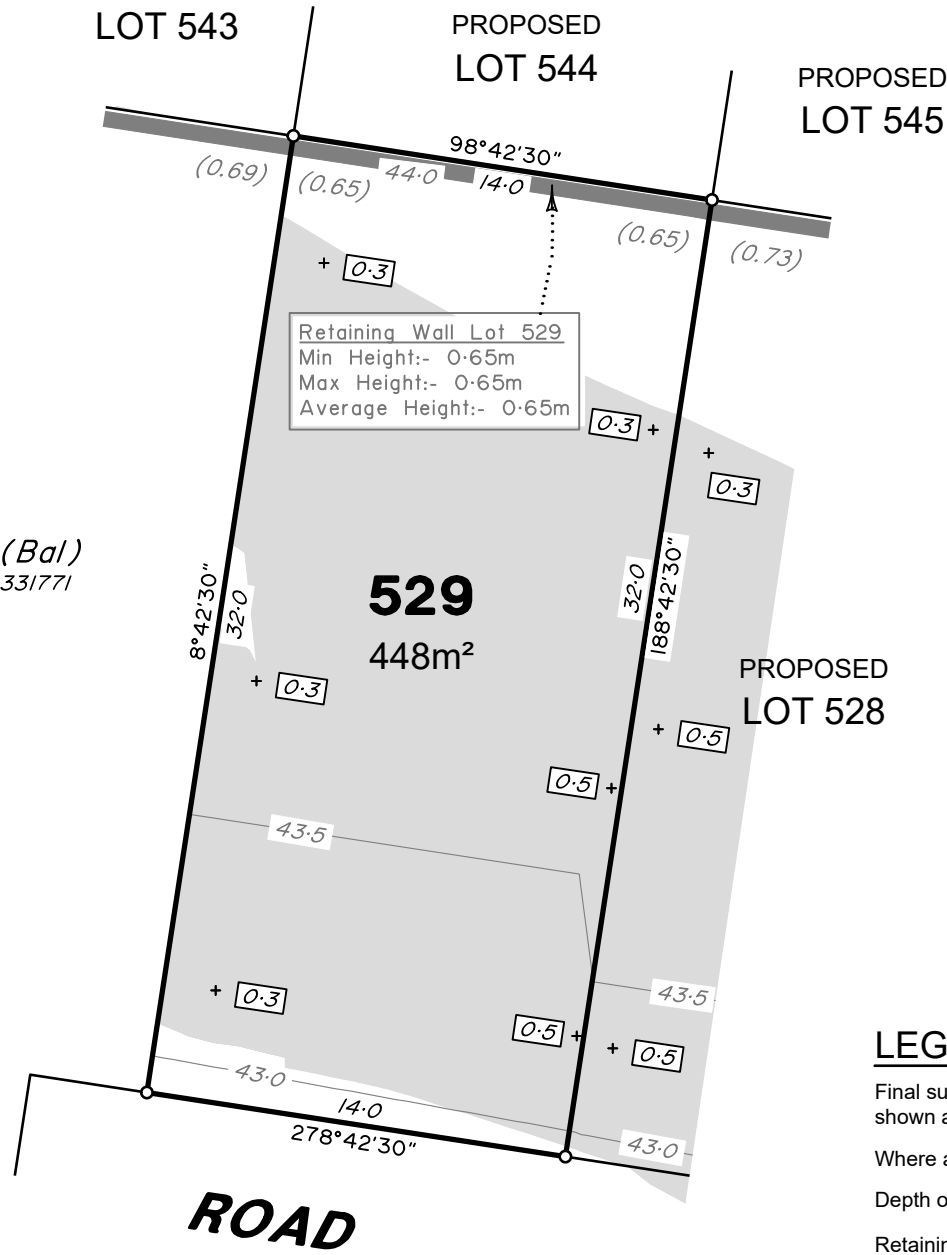


PROPOSED LOT 543

PROPOSED LOT 544

PROPOSED LOT 545

1 (Bal)
SP331771



ADDITIONAL NOTES:

The LOT dimensions and area shown hereon are subject to final field survey and also to the requirements of Council and any other authority which may have requirements under any relevant legislation

Final surface contours, fill areas, depth calcs & retaining walls shown hereon have been supplied by Calibre Engineers.

Compaction of any fill material placed on this site shall be completed to level one inspection and testing services in accordance with AS3798-2007.

Depth of fill values are calculated to the lower of the pre-development surface and the ground surface from Survey.

Copyright © Veris Australia Pty Ltd 27/05/2022.

Dawn
Walloon - Stage 6C2
For
ID_Land

IMPORTANT NOTES:
(These notes are an integral part of this plan)

This plan has been prepared for ID_LAND for the purposes of A Disclosure Plan Under the Land Sales Act 1984 (as amended).

It is not to be used by any other person or corporation or for any other purposes and is subject to the following limitations:

Please refer to the approved Development Application for conditions relating to the LOT and to approved Operational Works drawings for services location and possible easements.

THESE DESIGNS AND DRAWINGS ARE COPYRIGHT AND ARE NOT TO BE USED OR REPRODUCED WITHOUT THE WRITTEN PERMISSION OF VERIS

Data Sources

Cadastral Boundaries	401364-LC01-(K).dwg
Engineering Design	2022 X-21-001113.03_6C1C2_BASE.dwg
Final Surface Contours	20220513 Design contours Stg 6C1&C2.dwg
Pre-development Surface	20220513 Design tin Stg 6C1&C2.dwg

Issue	Revisions	Date	Drawn
A	Original	27.05.2022	BK

Locality:	Walloon
Local Authority:	Ipswich City Council
Horizontal Meridian:	MGA Zone 56
Vertical Level Datum:	*
Scale:	1:250 @ A4
Designed:	CALIBRE ENGINEERS
Drawn:	BK 27/05/2022
Checked:	DMC & KJJ 27/05/2022
Plot Date:	27 May, 2022
Computer File Ref:	401905-ST6C2-DP(A).dwg

DISCLOSURE PLAN
of Proposed LOT 529
being part of
Lot 1
on SP331771



veris

BRISBANE (07) 3686 4700 WHITSUNDAYS (07) 4945 6600

MACKAY (07) 4957 9700 CAIRNS (07) 4252 9400

veris.com.au
ACN 615 735 727
Veris Australia Pty Ltd

Drawing No
401905-DP- 529
Issue
A

LEGEND

Final surface contours based on A.H.D. datum at an interval of 0.5m, shown as: — 15.5 —

Where applicable, areas to be filled are shown as:

Depth of fill, in metres, shown as:- +0.5

Retaining wall and retaining wall height, shown on the lower side of the wall, have been calculated from digital data supplied by Calbre Engineers and shown as:

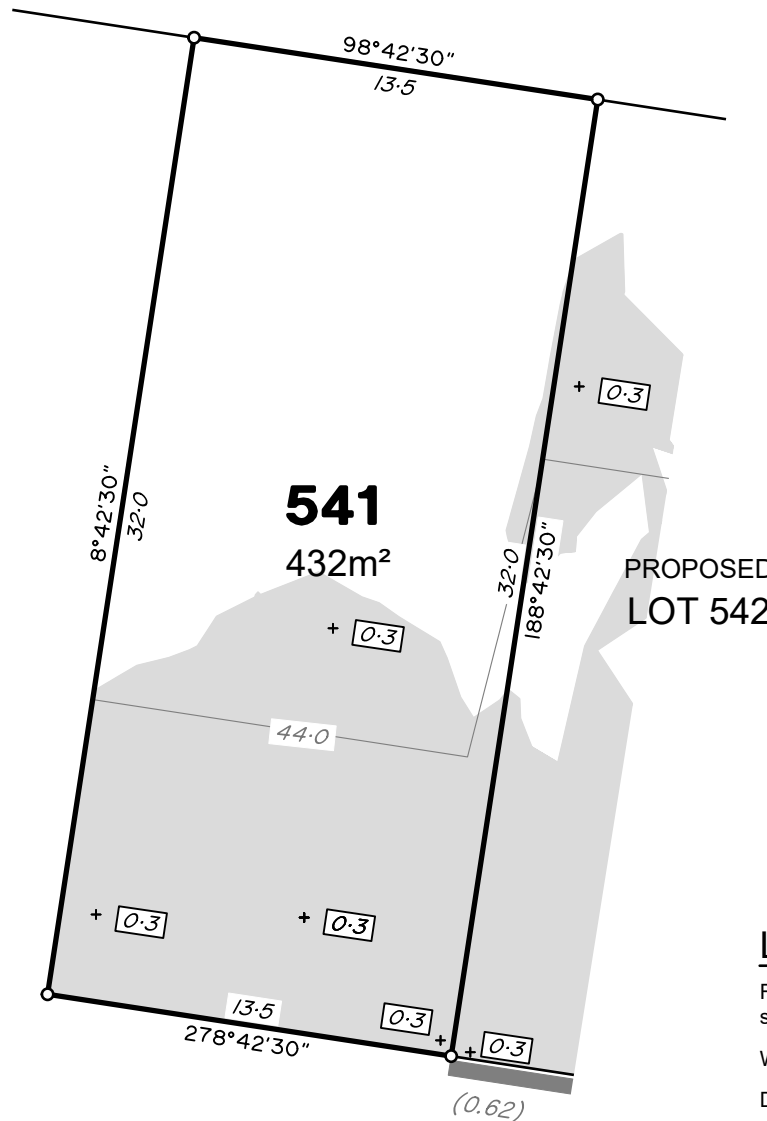
(1.2)





ROAD

1 (Bal)
SP331771



LEGEND

Final surface contours based on A.H.D. datum at an interval of 0.5m, shown as: 15.5

Where applicable, areas to be filled are shown as:

Depth of fill, in metres, shown as:- + (0.62)

Retaining wall and retaining wall height, shown on the lower side of the wall, have been calculated from digital data supplied by Calbre Engineers and shown as: (1.2)

ADDITIONAL NOTES:

The LOT dimensions and area shown hereon are subject to final field survey and also to the requirements of Council and any other authority which may have requirements under any relevant legislation

Final surface contours, fill areas, depth calcs & retaining walls shown hereon have been supplied by Calibre Engineers.

Compaction of any fill material placed on this site shall be completed to level one inspection and testing services in accordance with AS3798-2007.

Depth of fill values are calculated to the lower of the pre-development surface and the ground surface from Survey.

Copyright © Veris Australia Pty Ltd 27/05/2022.

Dawn
Walloon - Stage 6C2
For
ID_Land

IMPORTANT NOTES:
(These notes are an integral part of this plan)

This plan has been prepared for ID_LAND for the purposes of A Disclosure Plan Under the Land Sales Act 1984 (as amended).

It is not to be used by any other person or corporation or for any other purposes and is subject to the following limitations:

Please refer to the approved Development Application for conditions relating to the LOT and to approved Operational Works drawings for services location and possible easements.

THESE DESIGNS AND DRAWINGS ARE COPYRIGHT AND ARE NOT TO BE USED OR REPRODUCED WITHOUT THE WRITTEN PERMISSION OF VERIS

Data Sources

Cadastral Boundaries	401364-LC01-(K).dwg
Engineering Design	2022 X-21-000113.03_6C1C2_BASE.dwg
Final Surface Contours	20220513 Design contours Stg 6C1&C2.dwg
Pre-development Surface	20220513 Design tin Stg 6C1&C2.dwg

A	Original	27.05.2022	BK
Issue	Revisions	Date	Drawn

Locality:	Walloon
Local Authority:	Ipswich City Council
Horizontal Meridian:	MGA Zone 56
Vertical Level Datum:	*
Scale:	1:250 @ A4
Designed:	CALIBRE ENGINEERS
Drawn:	BK 27/05/2022
Checked:	DMC & KJJ 27/05/2022
Plot Date:	27 May, 2022
Computer File Ref:	401905-ST6C2-DP(A).dwg

DISCLOSURE PLAN
of Proposed LOT 541
being part of
Lot 1
on SP331771



veris

BRISBANE (07) 3686 4700 WHITSUNDAYS (07) 4945 6600

MACKAY (07) 4957 9700 CAIRNS (07) 4252 9400

veris.com.au
ACN 615 735 727
Veris Australia Pty Ltd

Drawing No 401905-DP- 541 Issue A



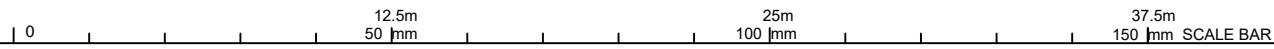


ROAD



Retaining Wall Lot 1
 Min Height:- 0.62m
 Max Height:- 0.62m
 Average Height:- 0.62m

1 (Bal)
 SP331771



ADDITIONAL NOTES:

The LOT dimensions and area shown hereon are subject to final field survey and also to the requirements of Council and any other authority which may have requirements under any relevant legislation

Final surface contours, fill areas, depth calcs & retaining walls shown hereon have been supplied by Calibre Engineers.

Compaction of any fill material placed on this site shall be completed to level one inspection and testing services in accordance with AS3798-2007.

Depth of fill values are calculated to the lower of the pre-development surface and the ground surface from Survey.

Copyright © Veris Australia Pty Ltd 27/05/2022.

Dawn
 Walloon - Stage 6C2
 For
 ID_Land

IMPORTANT NOTES:
(These notes are an integral part of this plan)

This plan has been prepared for ID_LAND for the purposes of A Disclosure Plan Under the Land Sales Act 1984 (as amended).

It is not to be used by any other person or corporation or for any other purposes and is subject to the following limitations:

Please refer to the approved Development Application for conditions relating to the LOT and to approved Operational Works drawings for services location and possible easements.

THESE DESIGNS AND DRAWINGS ARE COPYRIGHT AND ARE NOT TO BE USED OR REPRODUCED WITHOUT THE WRITTEN PERMISSION OF VERIS

Data Sources

Cadastral Boundaries	401364-LC01-(K).dwg
Engineering Design	2022 X-21-001113.03_6C1C2_BASE.dwg
Final Surface Contours	20220513 Design contours Stg 6C1&C2.dwg
Pre-development Surface	20220513 Design tin Stg 6C1&C2.dwg

Issue	Revisions	Date	Drawn
A	Original	27.05.2022	BK

Locality: Walloon
 Local Authority: Ipswich City Council
 Horizontal Meridian: MGA Zone 56
 Vertical Level Datum: *
 Scale: 1:250 @ A4
 Designed: CALIBRE ENGINEERS
 Drawn: BK 27/05/2022
 Checked: DMC & KJJ 27/05/2022
 Plot Date: 27 May, 2022
 Computer File Ref: 401905-ST6C2-DP(A).dwg

DISCLOSURE PLAN
 of Proposed LOT 542
 being part of
 Lot 1
 on SP331771



veris

BRISBANE (07) 3686 4700
 WHITSUNDAYS (07) 4945 6600

MACKAY (07) 4957 9700
 CAIRNS (07) 4252 9400

veris.com.au
 ACN 615 735 727
 Veris Australia Pty Ltd

Drawing No 401905-DP- 542 Issue A

LEGEND

Final surface contours based on A.H.D. datum at an interval of 0.5m, shown as: — 15.5 —

Where applicable, areas to be filled are shown as:

Depth of fill, in metres, shown as:- + 0.3

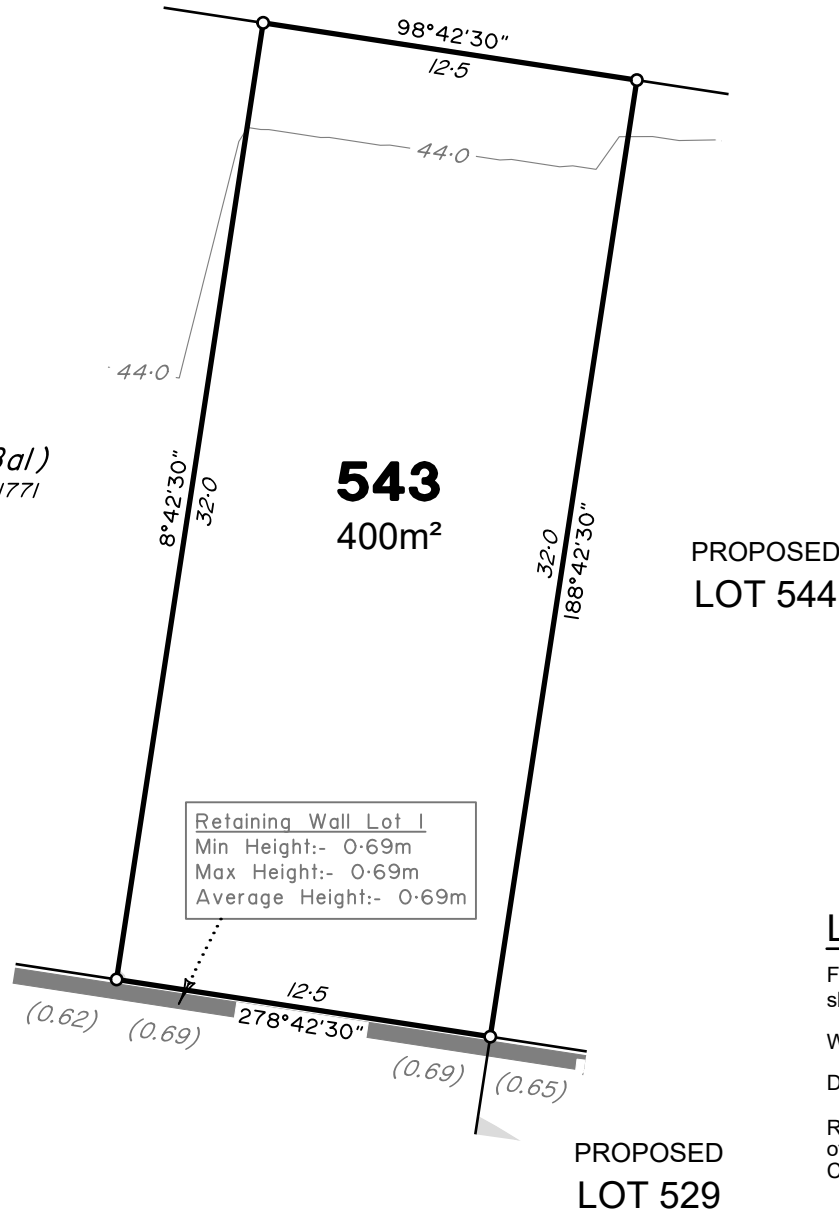
Retaining wall and retaining wall height, shown on the lower side of the wall, have been calculated from digital data supplied by Calbre Engineers and shown as:

(1.2)



ROAD

1 (Bal)
SP331771



Retaining Wall Lot 1
 Min Height:- 0.69m
 Max Height:- 0.69m
 Average Height:- 0.69m

LEGEND

Final surface contours based on A.H.D. datum at an interval of 0.5m, shown as: — 15.5 —

Where applicable, areas to be filled are shown as:

Depth of fill, in metres, shown as:- +

Retaining wall and retaining wall height, shown on the lower side of the wall, have been calculated from digital data supplied by Calbre Engineers and shown as:

ADDITIONAL NOTES:

The LOT dimensions and area shown hereon are subject to final field survey and also to the requirements of Council and any other authority which may have requirements under any relevant legislation

Final surface contours, fill areas, depth calcs & retaining walls shown hereon have been supplied by Calibre Engineers.

Compaction of any fill material placed on this site shall be completed to level one inspection and testing services in accordance with AS3798-2007.

Depth of fill values are calculated to the lower of the pre-development surface and the ground surface from Survey.

Copyright © Veris Australia Pty Ltd 27/05/2022.

Dawn
Walloon - Stage 6C2
For
ID_Land

IMPORTANT NOTES:
(These notes are an integral part of this plan)

This plan has been prepared for ID_LAND for the purposes of A Disclosure Plan Under the Land Sales Act 1984 (as amended).

It is not to be used by any other person or corporation or for any other purposes and is subject to the following limitations:

Please refer to the approved Development Application for conditions relating to the LOT and to approved Operational Works drawings for services location and possible easements.

THESE DESIGNS AND DRAWINGS ARE COPYRIGHT AND ARE NOT TO BE USED OR REPRODUCED WITHOUT THE WRITTEN PERMISSION OF VERIS

Data Sources

Cadastral Boundaries	401364-LC01-(K).dwg
Engineering Design	2022 X-21-001113.03_6C1C2_BASE.dwg
Final Surface Contours	20220513 Design contours Stg 6C1&C2.dwg
Pre-development Surface	20220513 Design tin Stg 6C1&C2.dwg

Issue	Revisions	Date	Drawn
A	Original	27.05.2022	BK

Locality:	Walloon
Local Authority:	Ipswich City Council
Horizontal Meridian:	MGA Zone 56
Vertical Level Datum:	*
Scale:	1:250 @ A4
Designed:	CALIBRE ENGINEERS
Drawn:	BK 27/05/2022
Checked:	DMC & KJJ 27/05/2022
Plot Date:	27 May, 2022
Computer File Ref:	401905-ST6C2-DP(A).dwg

DISCLOSURE PLAN
of Proposed LOT 543
being part of
Lot 1
on SP331771



veris

BRISBANE (07) 3686 4700 WHITSUNDAYS (07) 4945 6600

MACKAY (07) 4957 9700 CAIRNS (07) 4252 9400

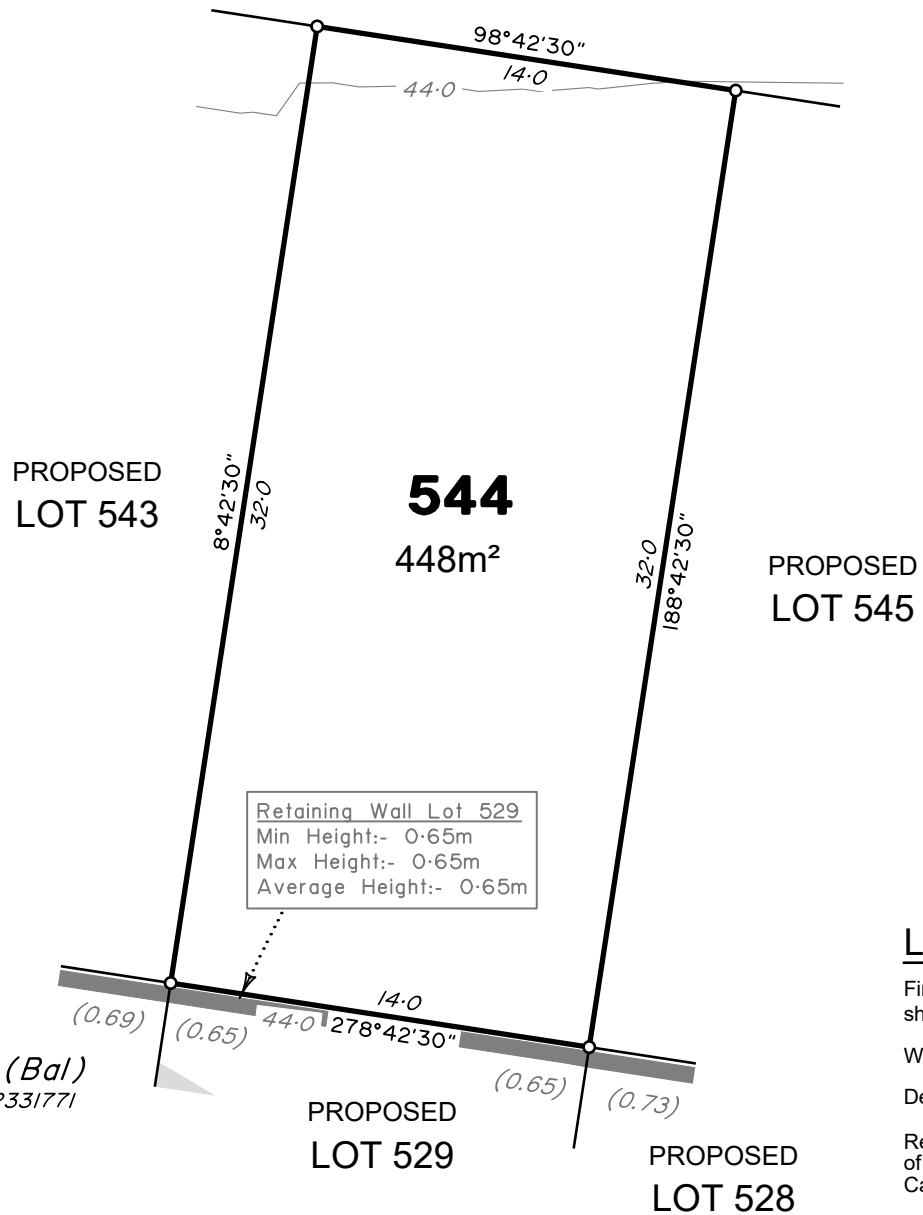
veris.com.au
ACN 615 735 727
Veris Australia Pty Ltd

Drawing No 401905-DP- 543 Issue A





ROAD



Retaining Wall Lot 529
 Min Height:- 0.65m
 Max Height:- 0.65m
 Average Height:- 0.65m

1 (Bal)
 SP331771

LEGEND

Final surface contours based on A.H.D. datum at an interval of 0.5m, shown as: — 15.5 —

Where applicable, areas to be filled are shown as:

Depth of fill, in metres, shown as:- +0.5

Retaining wall and retaining wall height, shown on the lower side of the wall, have been calculated from digital data supplied by Calbre Engineers and shown as: (1.2)

ADDITIONAL NOTES:

The LOT dimensions and area shown hereon are subject to final field survey and also to the requirements of Council and any other authority which may have requirements under any relevant legislation

Final surface contours, fill areas, depth calcs & retaining walls shown hereon have been supplied by Calibre Engineers.

Compaction of any fill material placed on this site shall be completed to level one inspection and testing services in accordance with AS3798-2007.

Depth of fill values are calculated to the lower of the pre-development surface and the ground surface from Survey.

Copyright © Veris Australia Pty Ltd 27/05/2022.

Dawn
 Walloon - Stage 6C2
 For
 ID_Land

IMPORTANT NOTES:
 (These notes are an integral part of this plan)

This plan has been prepared for ID_LAND for the purposes of A Disclosure Plan Under the Land Sales Act 1984 (as amended). It is not to be used by any other person or corporation or for any other purposes and is subject to the following limitations:

Please refer to the approved Development Application for conditions relating to the LOT and to approved Operational Works drawings for services location and possible easements.

THESE DESIGNS AND DRAWINGS ARE COPYRIGHT AND ARE NOT TO BE USED OR REPRODUCED WITHOUT THE WRITTEN PERMISSION OF VERIS

Data Sources

Cadastral Boundaries	401364-LC01-(K).dwg
Engineering Design	2022 X-21-000113.03_6C1C2_BASE.dwg
Final Surface Contours	20220513 Design contours Stg 6C1&C2.dwg
Pre-development Surface	20220513 Design tin Stg 6C1&C2.dwg

Issue	Revisions	Date	BK	Drawn
A	Original	27.05.2022	BK	

Locality: Walloon
 Local Authority: Ipswich City Council
 Horizontal Meridian: MGA Zone 56
 Vertical Level Datum: *
 Scale: 1:250 @ A4
 Designed: CALIBRE ENGINEERS
 Drawn: BK 27/05/2022
 Checked: DMC & KJJ 27/05/2022
 Plot Date: 27 May, 2022
 Computer File Ref: 401905-ST6C2-DP(A).dwg

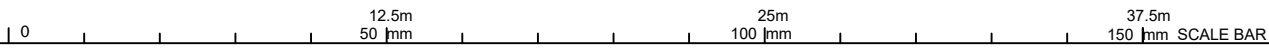
DISCLOSURE PLAN
 of Proposed LOT 544
 being part of
 Lot 1
 on SP331771



veris

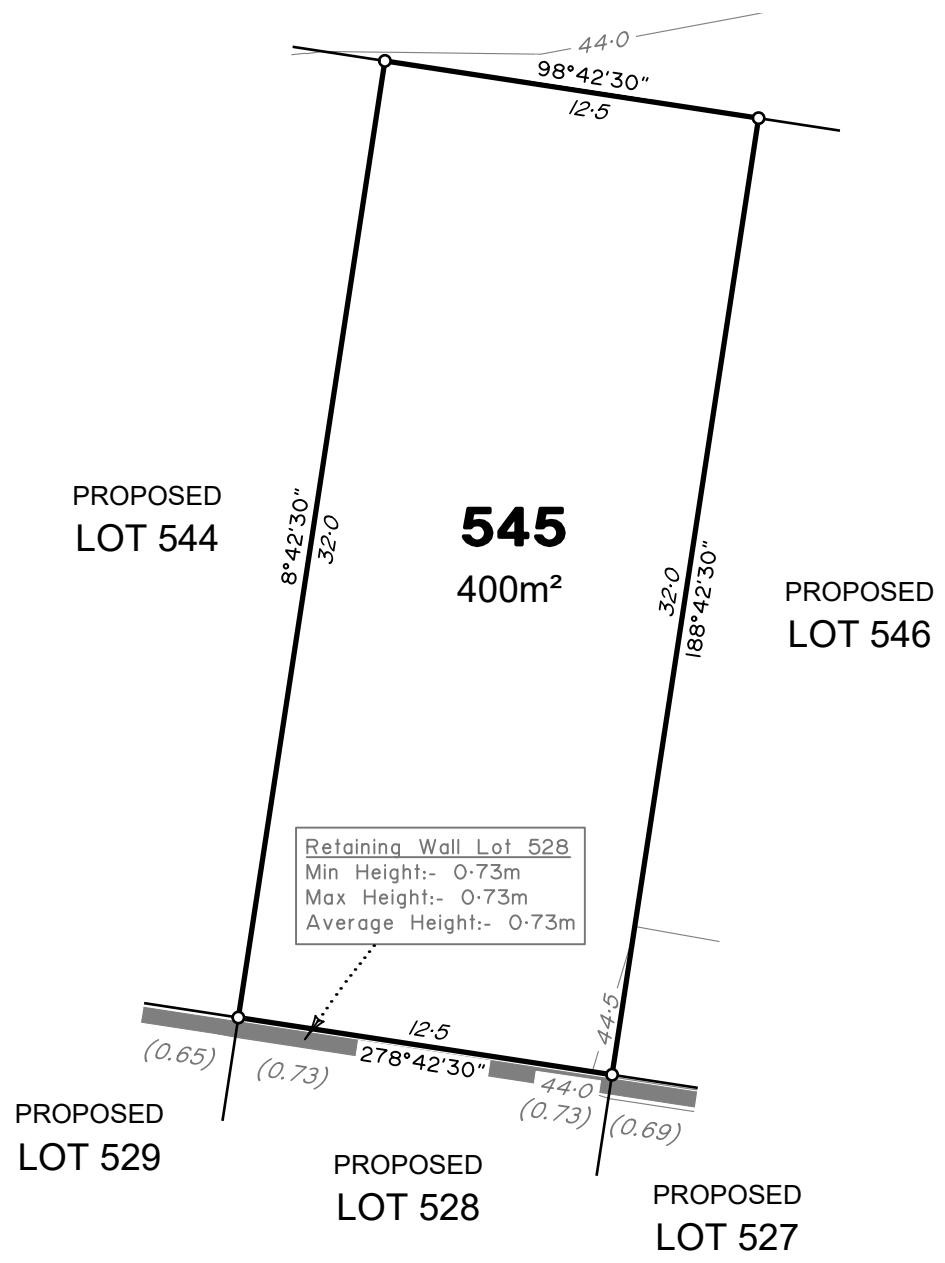
BRISBANE (07) 3686 4700 WHITSUNDAYS (07) 4945 6600
 MACKAY (07) 4957 9700 CAIRNS (07) 4252 9400
 veris.com.au
 ACN 615 735 727
 Veris Australia Pty Ltd

Drawing No 401905-DP- 544 Issue A





ROAD



Retaining Wall Lot 528
 Min Height:- 0.73m
 Max Height:- 0.73m
 Average Height:- 0.73m

ADDITIONAL NOTES:

The LOT dimensions and area shown hereon are subject to final field survey and also to the requirements of Council and any other authority which may have requirements under any relevant legislation

Final surface contours, fill areas, depth calcs & retaining walls shown hereon have been supplied by Calibre Engineers.

Compaction of any fill material placed on this site shall be completed to level one inspection and testing services in accordance with AS3798-2007.

Depth of fill values are calculated to the lower of the pre-development surface and the ground surface from Survey.

Copyright © Veris Australia Pty Ltd 27/05/2022.

Dawn
Walloon - Stage 6C2
For
ID_Land

IMPORTANT NOTES:
(These notes are an integral part of this plan)

This plan has been prepared for ID_LAND for the purposes of A Disclosure Plan Under the Land Sales Act 1984 (as amended).

It is not to be used by any other person or corporation or for any other purposes and is subject to the following limitations:

Please refer to the approved Development Application for conditions relating to the LOT and to approved Operational Works drawings for services location and possible easements.

THESE DESIGNS AND DRAWINGS ARE COPYRIGHT AND ARE NOT TO BE USED OR REPRODUCED WITHOUT THE WRITTEN PERMISSION OF VERIS

Data Sources

Cadastral Boundaries	401364-LC01-(K).dwg
Engineering Design	2022 X-21-001113.03_6C1C2_BASE.dwg
Final Surface Contours	20220513 Design contours Stg 6C1&C2.dwg
Pre-development Surface	20220513 Design tin Stg 6C1&C2.dwg

A	Original	27.05.2022	BK
Issue	Revisions	Date	Drawn

Locality: Walloon
 Local Authority: Ipswich City Council
 Horizontal Meridian: MGA Zone 56
 Vertical Level Datum: *
 Scale: 1:250 @ A4
 Designed: CALIBRE ENGINEERS
 Drawn: BK 27/05/2022
 Checked: DMC & KJJ 27/05/2022
 Plot Date: 27 May, 2022
 Computer File Ref: 401905-ST6C2-DP(A).dwg

DISCLOSURE PLAN
of Proposed LOT 545
being part of
Lot 1
on SP331771



veris

BRISBANE (07) 3686 4700 WHITSUNDAYS (07) 4945 6600

MACKAY (07) 4957 9700 CAIRNS (07) 4252 9400

veris.com.au
ACN 615 735 727
Veris Australia Pty Ltd

Drawing No 401905-DP- 545 Issue A

LEGEND

Final surface contours based on A.H.D. datum at an interval of 0.5m, shown as: — 15.5 —

Where applicable, areas to be filled are shown as:

Depth of fill, in metres, shown as:- +0.5

Retaining wall and retaining wall height, shown on the lower side of the wall, have been calculated from digital data supplied by Calbre Engineers and shown as: (1.2)



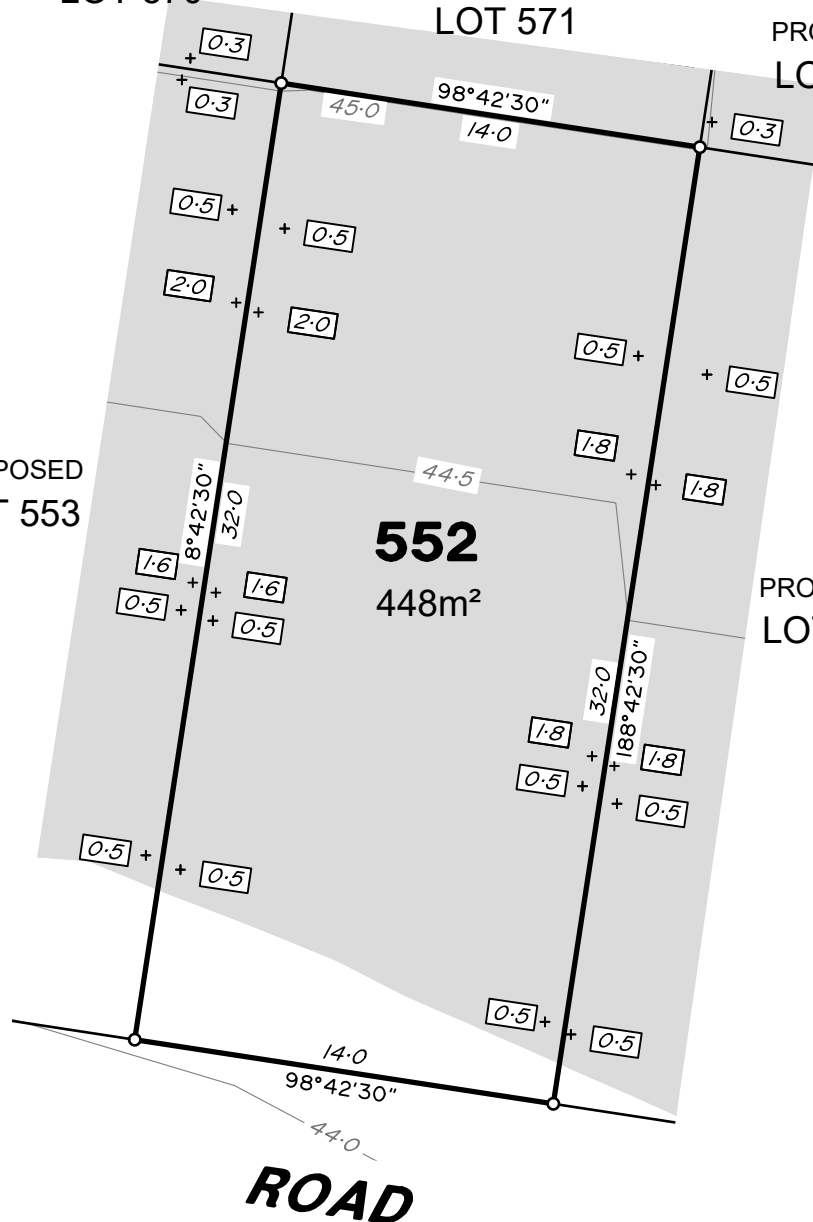
PROPOSED LOT 570

PROPOSED LOT 571

PROPOSED LOT 572

PROPOSED LOT 553

PROPOSED LOT 551



ROAD

LEGEND

Final surface contours based on A.H.D. datum at an interval of 0.5m, shown as: — 15.5 —

Where applicable, areas to be filled are shown as:

Depth of fill, in metres, shown as: - + 0.5

Retaining wall and retaining wall height, shown on the lower side of the wall, have been calculated from digital data supplied by Calbre Engineers and shown as:

(1.2)

ADDITIONAL NOTES:

The LOT dimensions and area shown hereon are subject to final field survey and also to the requirements of Council and any other authority which may have requirements under any relevant legislation

Final surface contours, fill areas, depth calcs & retaining walls shown hereon have been supplied by Calibre Engineers.

Compaction of any fill material placed on this site shall be completed to level one inspection and testing services in accordance with AS3798-2007.

Depth of fill values are calculated to the lower of the pre-development surface and the ground surface from Survey.

Easement A on RP96114 that currently impacts the parent lot from which this new lot will be created will be extinguished prior to the creation of the new lot.

Copyright © Veris Australia Pty Ltd 27/05/2022.

Dawn
Walloon - Stage 6C2
For
ID_Land

IMPORTANT NOTES:
(These notes are an integral part of this plan)

This plan has been prepared for ID_LAND for the purposes of A Disclosure Plan Under the Land Sales Act 1984 (as amended).

It is not to be used by any other person or corporation or for any other purposes and is subject to the following limitations:

Please refer to the approved Development Application for conditions relating to the LOT and to approved Operational Works drawings for services location and possible easements.

THESE DESIGNS AND DRAWINGS ARE COPYRIGHT AND ARE NOT TO BE USED OR REPRODUCED WITHOUT THE WRITTEN PERMISSION OF VERIS

Data Sources	
Cadastral Boundaries	401364-LC01-(K).dwg
Engineering Design	2022 X-21-001113.03_6C1C2_BASE.dwg
Final Surface Contours	20220513 Design contours Stg 6C1&C2.dwg
Pre-development Surface	20220513 Design tin Stg 6C1&C2.dwg

Issue	Revisions	Date	Drawn
A	Original	27.05.2022	BK

Locality:	Walloon
Local Authority:	Ipswich City Council
Horizontal Meridian:	MGA Zone 56
Vertical Level Datum:	*
Scale:	1:250 @ A4
Designed:	CALIBRE ENGINEERS
Drawn:	BK 27/05/2022
Checked:	DMC & KJJ 27/05/2022
Plot Date:	27 May, 2022
Computer File Ref:	401905-ST6C2-DP(A).dwg

DISCLOSURE PLAN
of Proposed LOT 552
being part of
Lot 1
on SP331771



veris

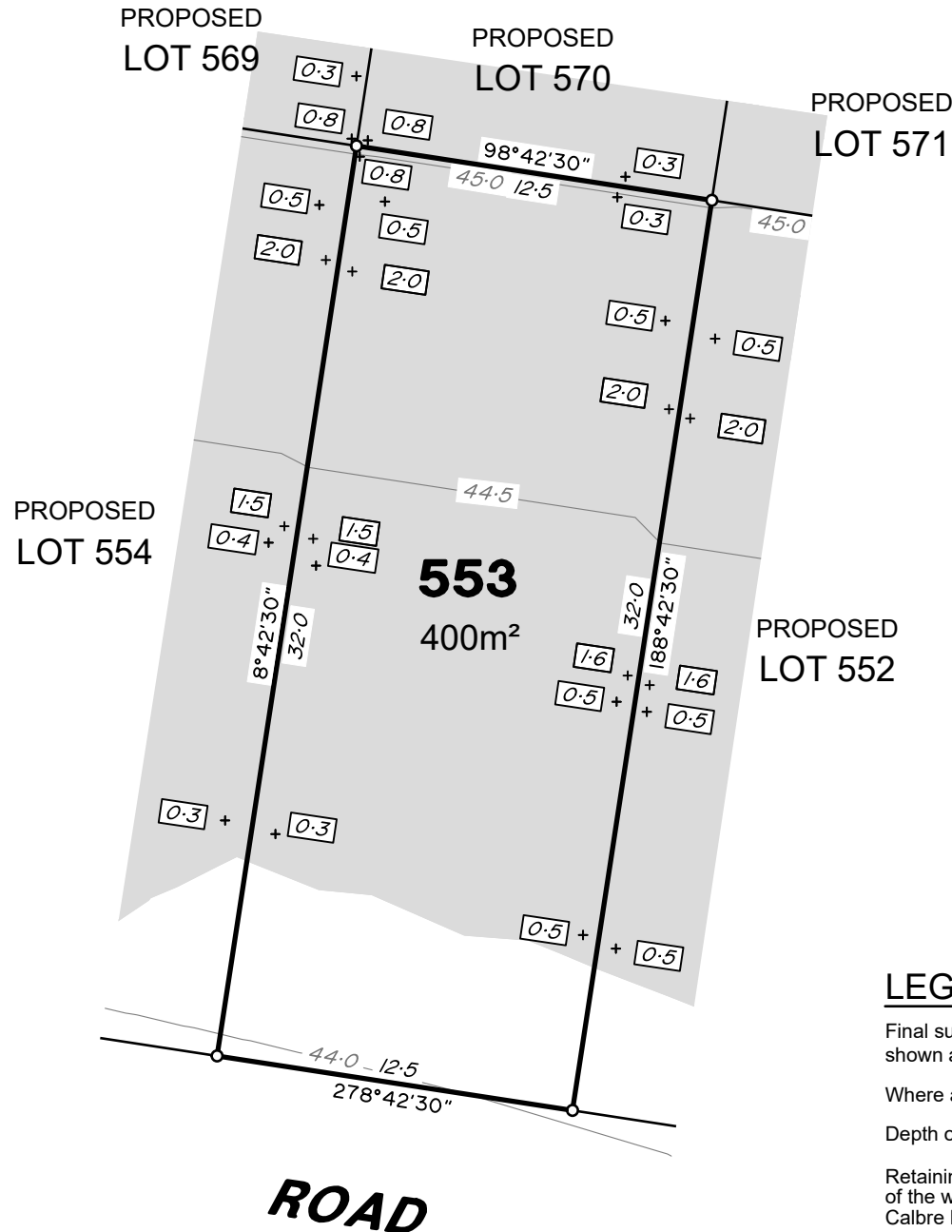
BRISBANE (07) 3686 4700 WHITSUNDAYS (07) 4945 6600

MACKAY (07) 4957 9700 CAIRNS (07) 4252 9400

veris.com.au
ACN 615 735 727
Veris Australia Pty Ltd

Drawing No
401905-DP- 552
Issue
A

0 12.5m 50 mm 25m 100 mm 37.5m 150 mm SCALE BAR



ADDITIONAL NOTES:

The LOT dimensions and area shown hereon are subject to final field survey and also to the requirements of Council and any other authority which may have requirements under any relevant legislation

Final surface contours, fill areas, depth calcs & retaining walls shown hereon have been supplied by Calibre Engineers.

Compaction of any fill material placed on this site shall be completed to level one inspection and testing services in accordance with AS3798-2007.

Depth of fill values are calculated to the lower of the pre-development surface and the ground surface from Survey.

Easement A on RP96114 that currently impacts the parent lot from which this new lot will be created will be extinguished prior to the creation of the title for the new lot.

Copyright © Veris Australia Pty Ltd 27/05/2022.

Dawn
Walloon - Stage 6C2
For
ID_Land

IMPORTANT NOTES:
(These notes are an integral part of this plan)

This plan has been prepared for ID_LAND for the purposes of A Disclosure Plan Under the Land Sales Act 1984 (as amended).

It is not to be used by any other person or corporation or for any other purposes and is subject to the following limitations:

Please refer to the approved Development Application for conditions relating to the LOT and to approved Operational Works drawings for services location and possible easements.

THESE DESIGNS AND DRAWINGS ARE COPYRIGHT AND ARE NOT TO BE USED OR REPRODUCED WITHOUT THE WRITTEN PERMISSION OF VERIS

Data Sources	
Cadastral Boundaries	401364-LC01-(K).dwg
Engineering Design	2022 X-21-001113.03_6C1C2_BASE.dwg
Final Surface Contours	20220513 Design contours Stg 6C1&C2.dwg
Pre-development Surface	20220513 Design tin Stg 6C1&C2.dwg

Issue	Revisions	Date	Drawn
A	Original	27.05.2022	BK

Locality: Walloon
Local Authority: Ipswich City Council
Horizontal Meridian: MGA Zone 56
Vertical Level Datum: *
Scale: 1:250 @ A4
Designed: CALIBRE ENGINEERS
Drawn: BK 27/05/2022
Checked: DMC & KJJ 27/05/2022
Plot Date: 27 May, 2022
Computer File Ref: 401905-ST6C2-DP(A).dwg

DISCLOSURE PLAN
of Proposed LOT 553
being part of
Lot 1
on SP331771



veris

BRISBANE (07) 3686 4700 WHITSUNDAYS (07) 4945 6600

MACKAY (07) 4957 9700 CAIRNS (07) 4252 9400

veris.com.au
ACN 615 735 727
Veris Australia Pty Ltd

Drawing No 401905-DP- 553 Issue A

LEGEND

Final surface contours based on A.H.D. datum at an interval of 0.5m, shown as: 15.5

Where applicable, areas to be filled are shown as:

Depth of fill, in metres, shown as:- + 0.5

Retaining wall and retaining wall height, shown on the lower side of the wall, have been calculated from digital data supplied by Calbre Engineers and shown as:

(1.2)



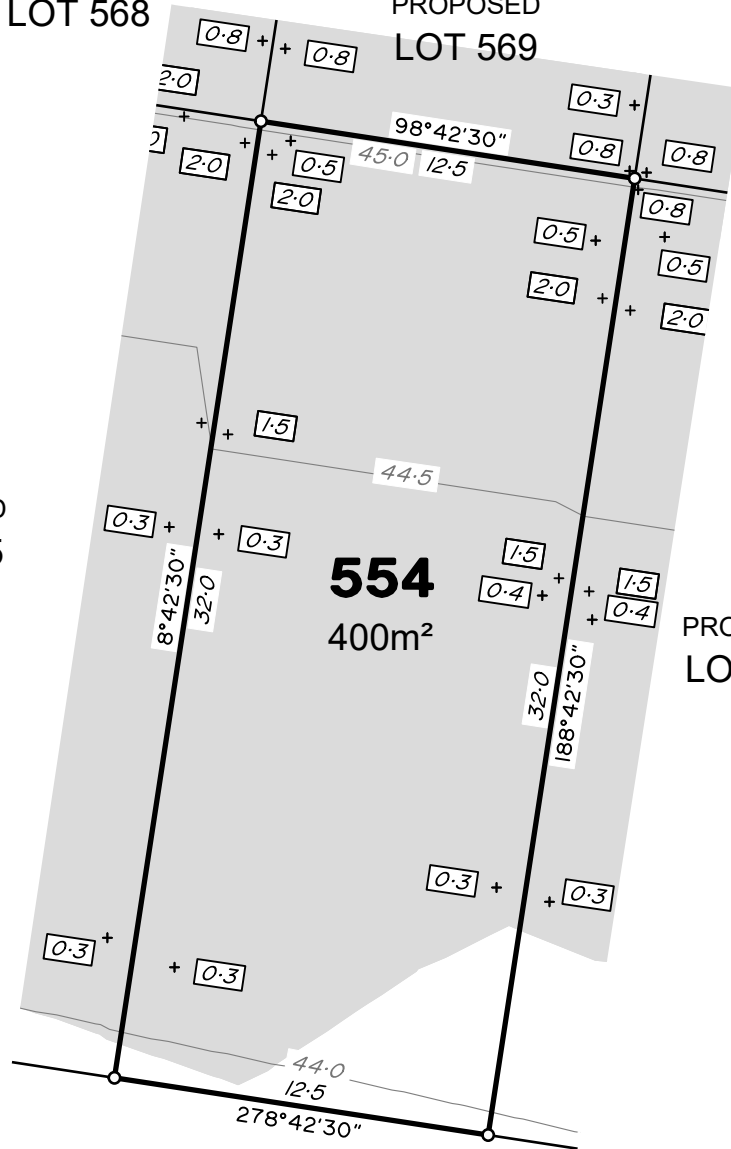
PROPOSED
LOT 568

PROPOSED
LOT 569

PROPOSED
LOT 570

PROPOSED
LOT 555

PROPOSED
LOT 553



ROAD

ADDITIONAL NOTES:

The LOT dimensions and area shown hereon are subject to final field survey and also to the requirements of Council and any other authority which may have requirements under any relevant legislation

Final surface contours, fill areas, depth calcs & retaining walls shown hereon have been supplied by Calibre Engineers.

Compaction of any fill material placed on this site shall be completed to level one inspection and testing services in accordance with AS3798-2007.

Depth of fill values are calculated to the lower of the pre-development surface and the ground surface from Survey.

Easement A on RP96114 that currently impacts the parent lot from which this new lot will be created will be extinguished prior to the creation of the title for the new lot.

Copyright © Veris Australia Pty Ltd 27/05/2022.

Dawn
Walloon - Stage 6C2
For
ID_Land

IMPORTANT NOTES:
(These notes are an integral part of this plan)

This plan has been prepared for ID_LAND for the purposes of A Disclosure Plan Under the Land Sales Act 1984 (as amended).

It is not to be used by any other person or corporation or for any other purposes and is subject to the following limitations:

Please refer to the approved Development Application for conditions relating to the LOT and to approved Operational Works drawings for services location and possible easements.

THESE DESIGNS AND DRAWINGS ARE COPYRIGHT AND ARE NOT TO BE USED OR REPRODUCED WITHOUT THE WRITTEN PERMISSION OF VERIS

Data Sources	
Cadastral Boundaries	401364-LC01-(K).dwg
Engineering Design	2022 X-21-001113.03_6C1C2_BASE.dwg
Final Surface Contours	20220513 Design contours Stg 6C1&C2.dwg
Pre-development Surface	20220513 Design tin Stg 6C1&C2.dwg

Issue	Revisions	Date	Drawn
A	Original	27.05.2022	BK

Locality:	Walloon
Local Authority:	Ipswich City Council
Horizontal Meridian:	MGA Zone 56
Vertical Level Datum:	*
Scale:	1:250 @ A4
Designed:	CALIBRE ENGINEERS
Drawn:	BK 27/05/2022
Checked:	DMC & KJJ 27/05/2022
Plot Date:	27 May, 2022
Computer File Ref: 401905-ST6C2-DP(A).dwg	

DISCLOSURE PLAN
of Proposed LOT 554
being part of
Lot 1
on SP331771



veris

BRISBANE (07) 3686 4700 WHITSUNDAYS (07) 4945 6600

MACKAY (07) 4957 9700 CAIRNS (07) 4252 9400

veris.com.au
ACN 615 735 727
Veris Australia Pty Ltd

Drawing No
401905-DP- 554
Issue
A

LEGEND

Final surface contours based on A.H.D. datum at an interval of 0.5m, shown as: — 15.5 —

Where applicable, areas to be filled are shown as:

Depth of fill, in metres, shown as:- + 0.5

Retaining wall and retaining wall height, shown on the lower side of the wall, have been calculated from digital data supplied by Calbre Engineers and shown as:

(1.2)





PROPOSED
LOT 567

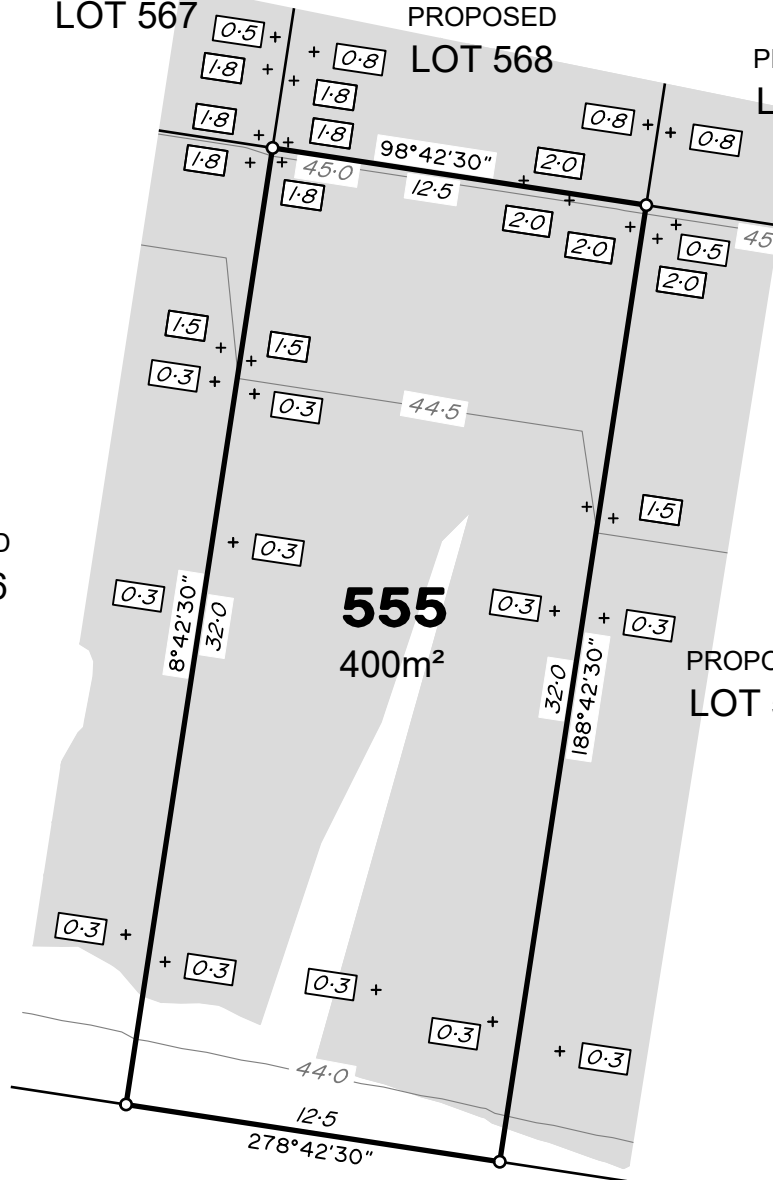
PROPOSED
LOT 568

PROPOSED
LOT 569

PROPOSED
LOT 556

555
400m²

PROPOSED
LOT 554



ROAD

ADDITIONAL NOTES:

The LOT dimensions and area shown hereon are subject to final field survey and also to the requirements of Council and any other authority which may have requirements under any relevant legislation

Final surface contours, fill areas, depth calcs & retaining walls shown hereon have been supplied by Calibre Engineers.

Compaction of any fill material placed on this site shall be completed to level one inspection and testing services in accordance with AS3798-2007.

Depth of fill values are calculated to the lower of the pre-development surface and the ground surface from Survey.

Easement A on RP96114 that currently impacts the parent lot from which this new lot will be created will be extinguished prior to the creation of the title for the new lot.

Copyright © Veris Australia Pty Ltd 27/05/2022.

Dawn
Walloon - Stage 6C2
For
ID_Land

IMPORTANT NOTES:
(These notes are an integral part of this plan)

This plan has been prepared for ID_LAND for the purposes of A Disclosure Plan Under the Land Sales Act 1984 (as amended).

It is not to be used by any other person or corporation or for any other purposes and is subject to the following limitations:

Please refer to the approved Development Application for conditions relating to the LOT and to approved Operational Works drawings for services location and possible easements.

THESE DESIGNS AND DRAWINGS ARE COPYRIGHT AND ARE NOT TO BE USED OR REPRODUCED WITHOUT THE WRITTEN PERMISSION OF VERIS

Data Sources	
Cadastral Boundaries	401364-LC01-(K).dwg
Engineering Design	2022 X-21-001113.03_6C1C2_BASE.dwg
Final Surface Contours	20220513 Design contours Stg 6C1&C2.dwg
Pre-development Surface	20220513 Design tin Stg 6C1&C2.dwg

Issue	Revisions	Date	Drawn
A	Original	27.05.2022	BK

Locality:	Walloon
Local Authority:	Ipswich City Council
Horizontal Meridian:	MGA Zone 56
Vertical Level Datum:	*
Scale:	1:250 @ A4
Designed:	CALIBRE ENGINEERS
Drawn:	BK 27/05/2022
Checked:	DMC & KJJ 27/05/2022
Plot Date:	27 May, 2022
Computer File Ref:	401905-ST6C2-DP(A).dwg

DISCLOSURE PLAN
of Proposed LOT 555
being part of
Lot 1
on SP331771



veris

BRISBANE (07) 3686 4700 WHITSUNDAYS (07) 4945 6600

MACKAY (07) 4957 9700 CAIRNS (07) 4252 9400

veris.com.au
ACN 615 735 727
Veris Australia Pty Ltd

Drawing No
401905-DP- 555
Issue
A

LEGEND

Final surface contours based on A.H.D. datum at an interval of 0.5m, shown as: 15.5

Where applicable, areas to be filled are shown as:

Depth of fill, in metres, shown as:- + 0.5

Retaining wall and retaining wall height, shown on the lower side of the wall, have been calculated from digital data supplied by Calbre Engineers and shown as: (1.2)





PROPOSED
LOT 566

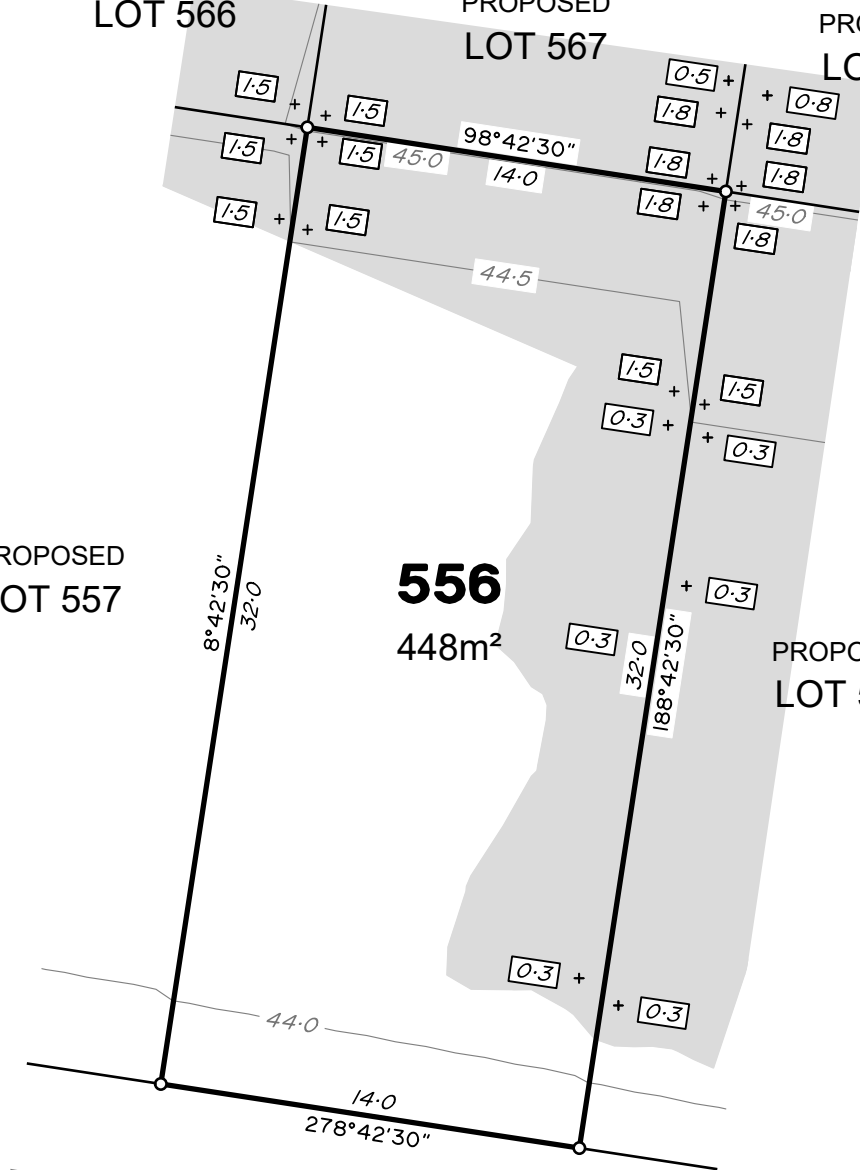
PROPOSED
LOT 567

PROPOSED
LOT 568

PROPOSED
LOT 557

556
448m²

PROPOSED
LOT 555



ROAD

ADDITIONAL NOTES:

The LOT dimensions and area shown hereon are subject to final field survey and also to the requirements of Council and any other authority which may have requirements under any relevant legislation

Final surface contours, fill areas, depth calcs & retaining walls shown hereon have been supplied by Calibre Engineers.

Compaction of any fill material placed on this site shall be completed to level one inspection and testing services in accordance with AS3798-2007.

Depth of fill values are calculated to the lower of the pre-development surface and the ground surface from Survey.

Easement A on RP96114 that currently impacts the parent lot from which this new lot will be created will be extinguished prior to the creation of the title for the new lot.

Copyright © Veris Australia Pty Ltd 27/05/2022.

Dawn
Walloon - Stage 6C2
For
ID_Land

IMPORTANT NOTES:
(These notes are an integral part of this plan)

This plan has been prepared for ID_LAND for the purposes of A Disclosure Plan Under the Land Sales Act 1984 (as amended).

It is not to be used by any other person or corporation or for any other purposes and is subject to the following limitations:

Please refer to the approved Development Application for conditions relating to the LOT and to approved Operational Works drawings for services location and possible easements.

THESE DESIGNS AND DRAWINGS ARE COPYRIGHT AND ARE NOT TO BE USED OR REPRODUCED WITHOUT THE WRITTEN PERMISSION OF VERIS

Data Sources

Cadastral Boundaries	401364-LC01-(K).dwg
Engineering Design	2022 X-21-000113.03_6C1C2_BASE.dwg
Final Surface Contours	20220513 Design contours Stg 6C1&C2.dwg
Pre-development Surface	20220513 Design tin Stg 6C1&C2.dwg

Issue	Revisions	Date	Drawn
A	Original	27.05.2022	BK

Locality: Walloon
 Local Authority: Ipswich City Council
 Horizontal Meridian: MGA Zone 56
 Vertical Level Datum: *
 Scale: 1:250 @ A4
 Designed: CALIBRE ENGINEERS
 Drawn: BK 27/05/2022
 Checked: DMC & KJJ 27/05/2022
 Plot Date: 27 May, 2022
 Computer File Ref: 401905-ST6C2-DP(A).dwg

DISCLOSURE PLAN
of Proposed LOT 556
being part of
Lot 1
on SP331771



veris

BRISBANE (07) 3686 4700 WHITSUNDAYS (07) 4945 6600

MACKAY (07) 4957 9700 CAIRNS (07) 4252 9400

veris.com.au
ACN 615 735 727
Veris Australia Pty Ltd

Drawing No 401905-DP- 556 Issue A

LEGEND

Final surface contours based on A.H.D. datum at an interval of 0.5m, shown as: — 15.5 —

Where applicable, areas to be filled are shown as:

Depth of fill, in metres, shown as:- +0.5

Retaining wall and retaining wall height, shown on the lower side of the wall, have been calculated from digital data supplied by Calbre Engineers and shown as:

(1.2)





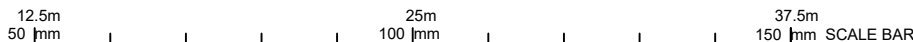
1 (Bal)
SP331771

557
400m²

PROPOSED
LOT 556

PROPOSED
LOT 566

PROPOSED
LOT 567



ADDITIONAL NOTES:

The LOT dimensions and area shown hereon are subject to final field survey and also to the requirements of Council and any other authority which may have requirements under any relevant legislation

Final surface contours, fill areas, depth calcs & retaining walls shown hereon have been supplied by Calibre Engineers.

Compaction of any fill material placed on this site shall be completed to level one inspection and testing services in accordance with AS3798-2007.

Depth of fill values are calculated to the lower of the pre-development surface and the ground surface from Survey.

Easement A on RP96114 that currently impacts the parent lot from which this new lot will be created will be extinguished prior to the creation of the title for the new lot.

Copyright © Veris Australia Pty Ltd 27/05/2022.

Dawn
Walloon - Stage 6C2
For
ID_Land

IMPORTANT NOTES:
(These notes are an integral part of this plan)

This plan has been prepared for ID_LAND for the purposes of A Disclosure Plan Under the Land Sales Act 1984 (as amended).

It is not to be used by any other person or corporation or for any other purposes and is subject to the following limitations:

Please refer to the approved Development Application for conditions relating to the LOT and to approved Operational Works drawings for services location and possible easements.

THESE DESIGNS AND DRAWINGS ARE COPYRIGHT AND ARE NOT TO BE USED OR REPRODUCED WITHOUT THE WRITTEN PERMISSION OF VERIS

Data Sources

Cadastral Boundaries	401364-LC01-(K).dwg
Engineering Design	2022 X-21-001113.03_6C1C2_BASE.dwg
Final Surface Contours	20220513 Design contours Stg 6C1&C2.dwg
Pre-development Surface	20220513 Design tin Stg 6C1&C2.dwg

Issue	Revisions	Date	Drawn
A	Original	27.05.2022	BK

Locality: Walloon
Local Authority: Ipswich City Council
Horizontal Meridian: MGA Zone 56
Vertical Level Datum: *
Scale: 1:250 @ A4
Designed: CALIBRE ENGINEERS
Drawn: BK 27/05/2022
Checked: DMC & KJJ 27/05/2022
Plot Date: 27 May, 2022
Computer File Ref: 401905-ST6C2-DP(A).dwg

DISCLOSURE PLAN
of Proposed LOT 557
being part of
Lot 1
on SP331771



veris

BRISBANE (07) 3686 4700 WHITSUNDAYS (07) 4945 6600

MACKAY (07) 4957 9700 CAIRNS (07) 4252 9400

veris.com.au
ACN 615 735 727
Veris Australia Pty Ltd

Drawing No 401905-DP- 557 Issue A

LEGEND

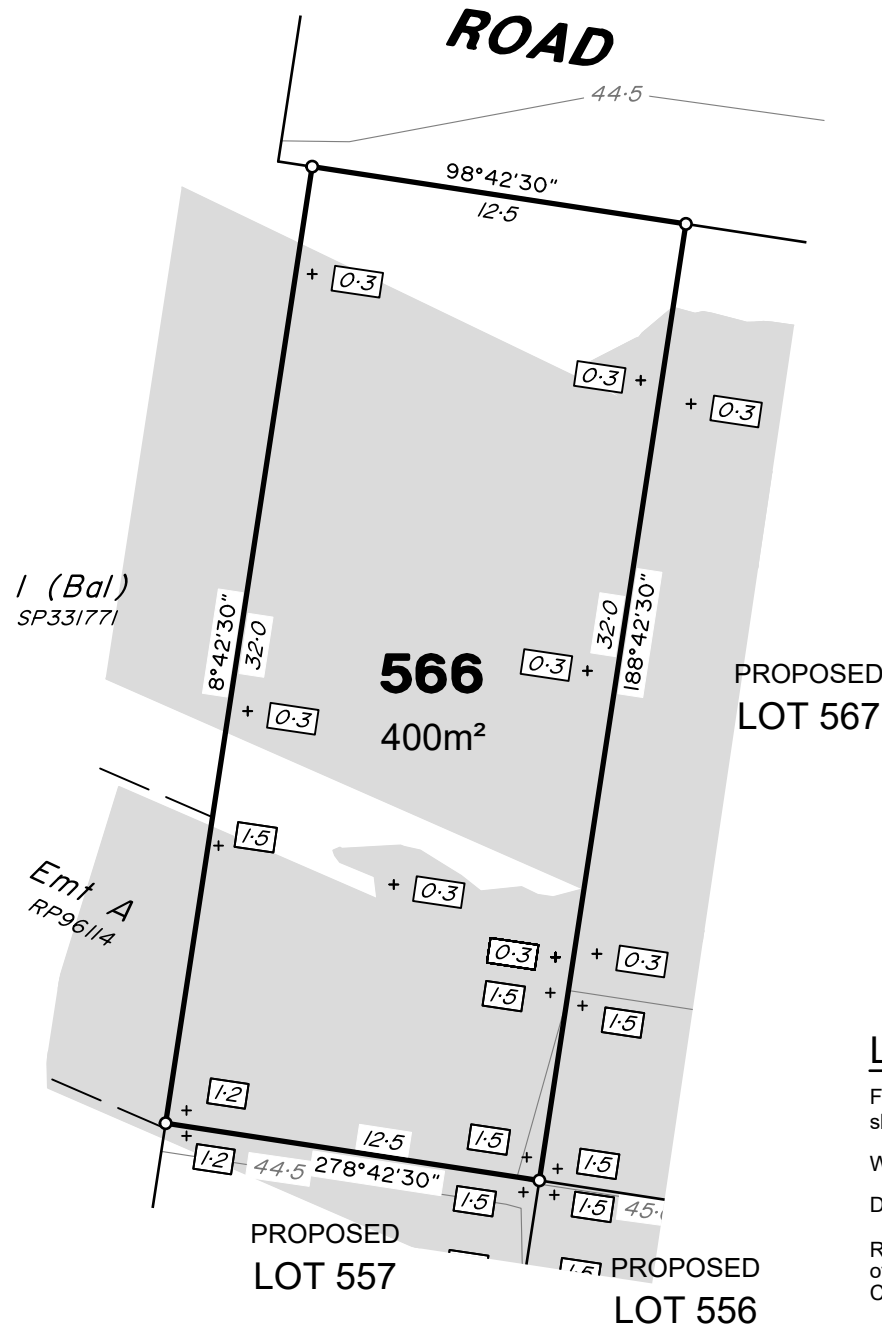
Final surface contours based on A.H.D. datum at an interval of 0.5m, shown as: — 15.5 —

Where applicable, areas to be filled are shown as:

Depth of fill, in metres, shown as:- + 0.5

Retaining wall and retaining wall height, shown on the lower side of the wall, have been calculated from digital data supplied by Calbre Engineers and shown as:

(1.2)

**ADDITIONAL NOTES:**

The LOT dimensions and area shown hereon are subject to final field survey and also to the requirements of Council and any other authority which may have requirements under any relevant legislation

Final surface contours, fill areas, depth calcs & retaining walls shown hereon have been supplied by Calibre Engineers.

Compaction of any fill material placed on this site shall be completed to level one inspection and testing services in accordance with AS3798-2007.

Depth of fill values are calculated to the lower of the pre-development surface and the ground surface from Survey.

Easement A on RP96114 that currently impacts the parent lot from which this new lot will be created will be extinguished prior to the creation of the title for the new lot.

Copyright © Veris Australia Pty Ltd 27/05/2022.

Dawn
Walloon - Stage 6C2
For
ID_Land

IMPORTANT NOTES:
(These notes are an integral part of this plan)

This plan has been prepared for ID_LAND for the purposes of A Disclosure Plan Under the Land Sales Act 1984 (as amended).

It is not to be used by any other person or corporation or for any other purposes and is subject to the following limitations:

Please refer to the approved Development Application for conditions relating to the LOT and to approved Operational Works drawings for services location and possible easements.

THESE DESIGNS AND DRAWINGS ARE COPYRIGHT AND ARE NOT TO BE USED OR REPRODUCED WITHOUT THE WRITTEN PERMISSION OF VERIS

Data Sources

Cadastral Boundaries 401364-LC01-(K).dwg
Engineering Design 2022 X-21-001113.03_6C1C2_BASE.dwg
Final Surface Contours 20220513 Design contours Stg 6C1&C2.dwg
Pre-development Surface 20220513 Design tin Stg 6C1&C2.dwg

Issue	Revisions	Date	Drawn
A	Original	27.05.2022	BK

Locality: Walloon
Local Authority: Ipswich City Council
Horizontal Meridian: MGA Zone 56
Vertical Level Datum: *
Scale: 1:250 @ A4
Designed: CALIBRE ENGINEERS
Drawn: BK 27/05/2022
Checked: DMC & KJJ 27/05/2022
Plot Date: 27 May, 2022
Computer File Ref: 401905-ST6C2-DP(A).dwg

DISCLOSURE PLAN
of Proposed LOT 566
being part of
Lot 1
on SP331771



veris

BRISBANE (07) 3686 4700 WHITSUNDAYS (07) 4945 6600

MACKAY (07) 4957 9700 CAIRNS (07) 4252 9400

veris.com.au
ACN 615 735 727
Veris Australia Pty Ltd

Drawing No 401905-DP- 566 Issue A

LEGEND

Final surface contours based on A.H.D. datum at an interval of 0.5m, shown as: — 15.5 —

Where applicable, areas to be filled are shown as:

Depth of fill, in metres, shown as:- +0.5

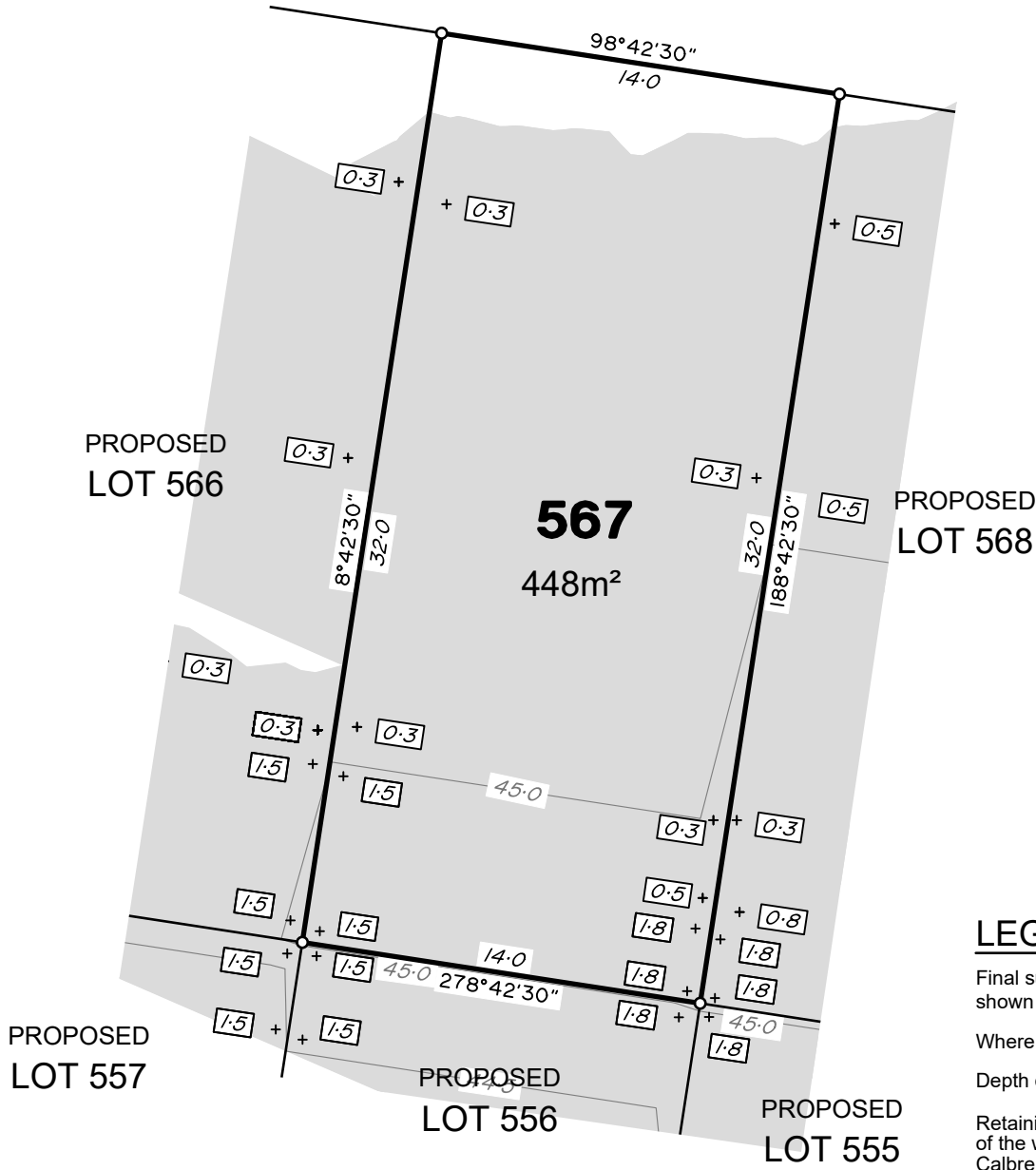
Retaining wall and retaining wall height, shown on the lower side of the wall, have been calculated from digital data supplied by Calbre Engineers and shown as:

(1.2)





ROAD



ADDITIONAL NOTES:

The LOT dimensions and area shown hereon are subject to final field survey and also to the requirements of Council and any other authority which may have requirements under any relevant legislation

Final surface contours, fill areas, depth calcs & retaining walls shown hereon have been supplied by Calibre Engineers.

Compaction of any fill material placed on this site shall be completed to level one inspection and testing services in accordance with AS3798-2007.

Depth of fill values are calculated to the lower of the pre-development surface and the ground surface from Survey.

Easement A on RP96114 that currently impacts the parent lot from which this new lot will be created will be extinguished prior to the creation of the title for the new lot.

Copyright © Veris Australia Pty Ltd 27/05/2022.

Dawn
Walloon - Stage 6C2
For
ID_Land

IMPORTANT NOTES:
(These notes are an integral part of this plan)

This plan has been prepared for ID_LAND for the purposes of A Disclosure Plan Under the Land Sales Act 1984 (as amended).

It is not to be used by any other person or corporation or for any other purposes and is subject to the following limitations:

Please refer to the approved Development Application for conditions relating to the LOT and to approved Operational Works drawings for services location and possible easements.

THESE DESIGNS AND DRAWINGS ARE COPYRIGHT AND ARE NOT TO BE USED OR REPRODUCED WITHOUT THE WRITTEN PERMISSION OF VERIS

Data Sources

Cadastral Boundaries	401364-LC01-(K).dwg
Engineering Design	2022 X-21-000113.03_6C1C2_BASE.dwg
Final Surface Contours	20220513 Design contours Stg 6C1&C2.dwg
Pre-development Surface	20220513 Design tin Stg 6C1&C2.dwg

Issue	Revisions	Date	Drawn
A	Original	27.05.2022	BK

Locality: Walloon
 Local Authority: Ipswich City Council
 Horizontal Meridian: MGA Zone 56
 Vertical Level Datum: *
 Scale: 1:250 @ A4
 Designed: CALIBRE ENGINEERS
 Drawn: BK 27/05/2022
 Checked: DMC & KJJ 27/05/2022
 Plot Date: 27 May, 2022
 Computer File Ref: 401905-ST6C2-DP(A).dwg

DISCLOSURE PLAN
of Proposed LOT 567
being part of
Lot 1
on SP331771



veris

BRISBANE (07) 3686 4700 WHITSUNDAYS (07) 4945 6600

MACKAY (07) 4957 9700 CAIRNS (07) 4252 9400

veris.com.au
ACN 615 735 727
Veris Australia Pty Ltd

Drawing No 401905-DP- 567 Issue A

LEGEND

Final surface contours based on A.H.D. datum at an interval of 0.5m, shown as: — 15.5 —

Where applicable, areas to be filled are shown as:

Depth of fill, in metres, shown as:- +0.5

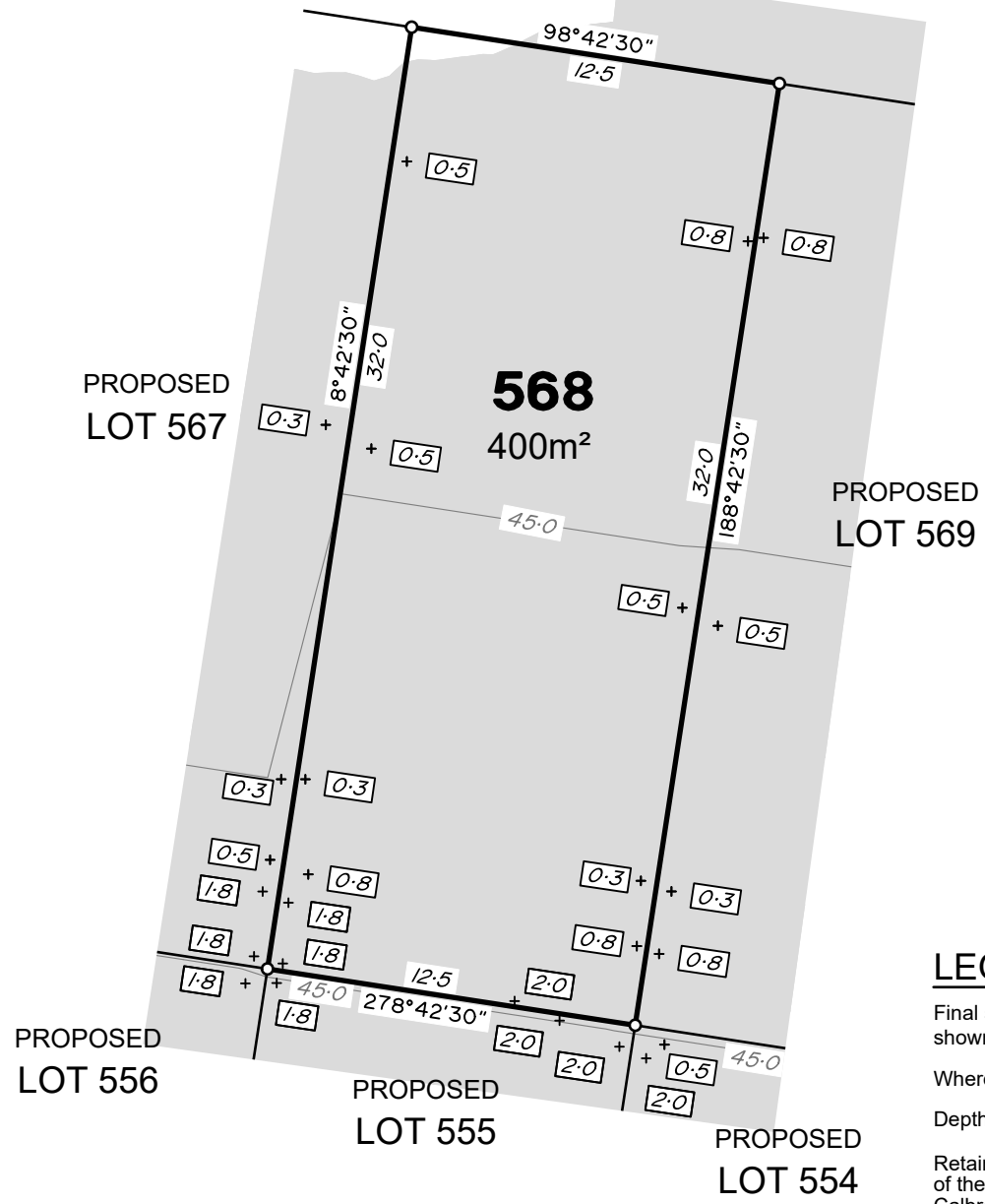
Retaining wall and retaining wall height, shown on the lower side of the wall, have been calculated from digital data supplied by Calbre Engineers and shown as:

(1.2)





ROAD



ADDITIONAL NOTES:

The LOT dimensions and area shown hereon are subject to final field survey and also to the requirements of Council and any other authority which may have requirements under any relevant legislation

Final surface contours, fill areas, depth calcs & retaining walls shown hereon have been supplied by Calibre Engineers.

Compaction of any fill material placed on this site shall be completed to level one inspection and testing services in accordance with AS3798-2007.

Depth of fill values are calculated to the lower of the pre-development surface and the ground surface from Survey.

Easement A on RP96114 that currently impacts the parent lot from which this new lot will be created will be extinguished prior to the creation of the title for the new lot.

Copyright © Veris Australia Pty Ltd 27/05/2022.

Dawn
Walloon - Stage 6C2
For
ID_Land

IMPORTANT NOTES:
(These notes are an integral part of this plan)

This plan has been prepared for ID_LAND for the purposes of A Disclosure Plan Under the Land Sales Act 1984 (as amended).

It is not to be used by any other person or corporation or for any other purposes and is subject to the following limitations:

Please refer to the approved Development Application for conditions relating to the LOT and to approved Operational Works drawings for services location and possible easements.

THESE DESIGNS AND DRAWINGS ARE COPYRIGHT AND ARE NOT TO BE USED OR REPRODUCED WITHOUT THE WRITTEN PERMISSION OF VERIS

Data Sources			
Cadastral Boundaries			
Engineering Design	401364-LC01-(K).dwg		
Final Surface Contours	2022 X-21-000113.03_6C1C2_BASE.dwg		
Pre-development Surface	20220513 Design contours Stg 6C1&C2.dwg		
	20220513 Design tin Stg 6C1&C2.dwg		

Issue	Revisions	Date	Drawn
A	Original	27.05.2022	BK

Locality: Walloon
 Local Authority: Ipswich City Council
 Horizontal Meridian: MGA Zone 56
 Vertical Level Datum: *
 Scale: 1:250 @ A4
 Designed: CALIBRE ENGINEERS
 Drawn: BK 27/05/2022
 Checked: DMC & KJJ 27/05/2022
 Plot Date: 27 May, 2022
 Computer File Ref: 401905-ST6C2-DP(A).dwg

DISCLOSURE PLAN
of Proposed LOT 568
being part of
Lot 1
on SP331771



veris

BRISBANE (07) 3686 4700 WHITSUNDAYS (07) 4945 6600

MACKAY (07) 4957 9700 CAIRNS (07) 4252 9400

veris.com.au
ACN 615 735 727
Veris Australia Pty Ltd

Drawing No 401905-DP- 568 Issue A

LEGEND

Final surface contours based on A.H.D. datum at an interval of 0.5m, shown as: — 15.5 —

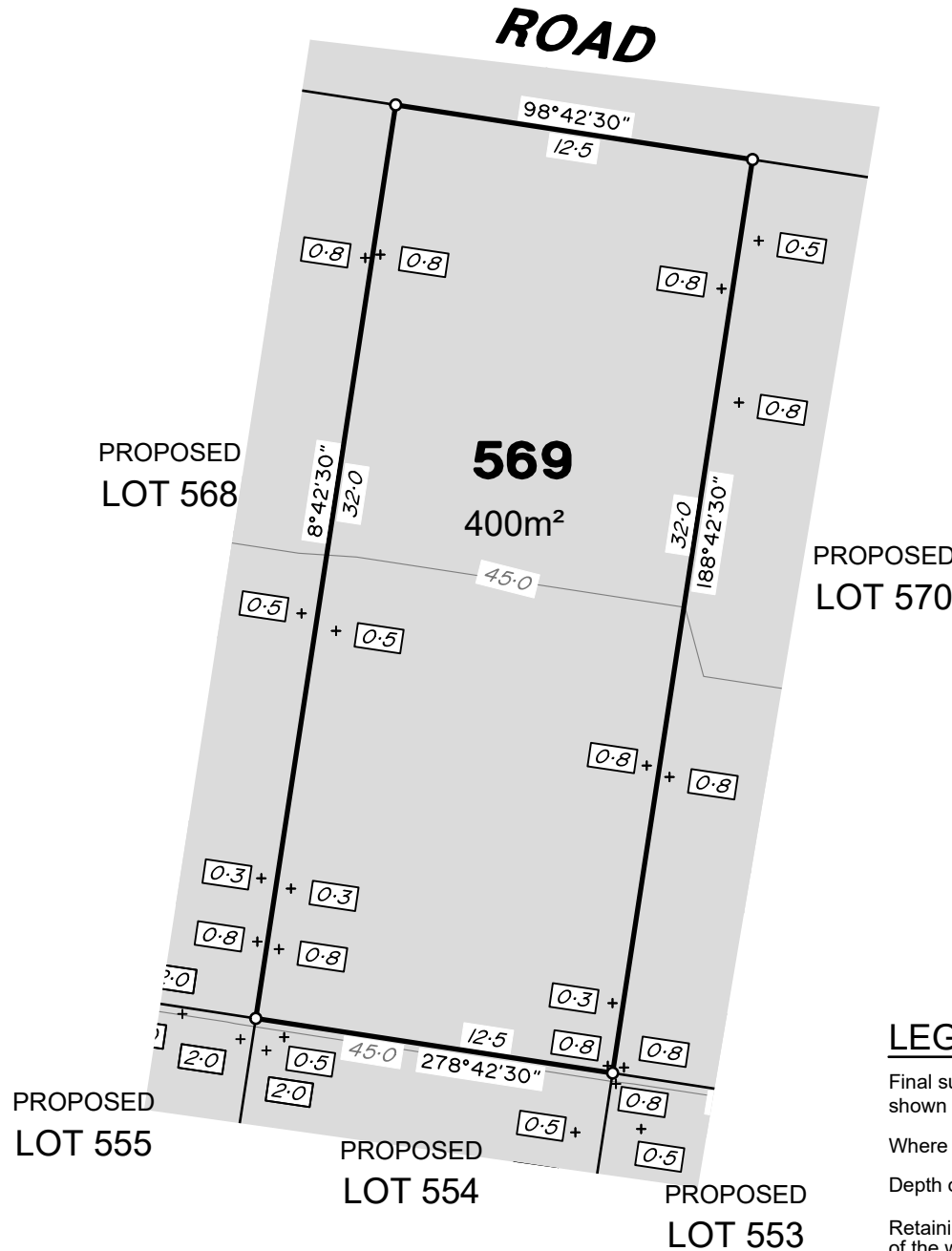
Where applicable, areas to be filled are shown as:

Depth of fill, in metres, shown as:- +0.5

Retaining wall and retaining wall height, shown on the lower side of the wall, have been calculated from digital data supplied by Calbre Engineers and shown as:

(1.2)





ADDITIONAL NOTES:

The LOT dimensions and area shown hereon are subject to final field survey and also to the requirements of Council and any other authority which may have requirements under any relevant legislation

Final surface contours, fill areas, depth calcs & retaining walls shown hereon have been supplied by Calibre Engineers.

Compaction of any fill material placed on this site shall be completed to level one inspection and testing services in accordance with AS3798-2007.

Depth of fill values are calculated to the lower of the pre-development surface and the ground surface from Survey.

Copyright © Veris Australia Pty Ltd 27/05/2022.

Dawn
Walloon - Stage 6C2
For
ID_Land

IMPORTANT NOTES:
(These notes are an integral part of this plan)

This plan has been prepared for ID_LAND for the purposes of A Disclosure Plan Under the Land Sales Act 1984 (as amended).

It is not to be used by any other person or corporation or for any other purposes and is subject to the following limitations:

Please refer to the approved Development Application for conditions relating to the LOT and to approved Operational Works drawings for services location and possible easements.

THESE DESIGNS AND DRAWINGS ARE COPYRIGHT AND ARE NOT TO BE USED OR REPRODUCED WITHOUT THE WRITTEN PERMISSION OF VERIS

Data Sources

Cadastral Boundaries	401364-LC01-(K).dwg
Engineering Design	2022 X-21-001113.03_6C1C2_BASE.dwg
Final Surface Contours	20220513 Design contours Stg 6C1&C2.dwg
Pre-development Surface	20220513 Design tin Stg 6C1&C2.dwg

Issue	Revisions	Date	Drawn
A	Original	27.05.2022	BK

Locality: Walloon
 Local Authority: Ipswich City Council
 Horizontal Meridian: MGA Zone 56
 Vertical Level Datum: *
 Scale: 1:250 @ A4
 Designed: CALIBRE ENGINEERS
 Drawn: BK 27/05/2022
 Checked: DMC & KJJ 27/05/2022
 Plot Date: 27 May, 2022
 Computer File Ref: 401905-ST6C2-DP(A).dwg

DISCLOSURE PLAN
of Proposed LOT 569
being part of
Lot 1
on SP331771



veris

BRISBANE (07) 3686 4700 WHITSUNDAYS (07) 4945 6600

MACKAY (07) 4957 9700 CAIRNS (07) 4252 9400

veris.com.au
ACN 615 735 727
Veris Australia Pty Ltd

Drawing No 401905-DP- 569 Issue A

LEGEND

Final surface contours based on A.H.D. datum at an interval of 0.5m, shown as: — 15.5 —

Where applicable, areas to be filled are shown as:

Depth of fill, in metres, shown as:- +0.5

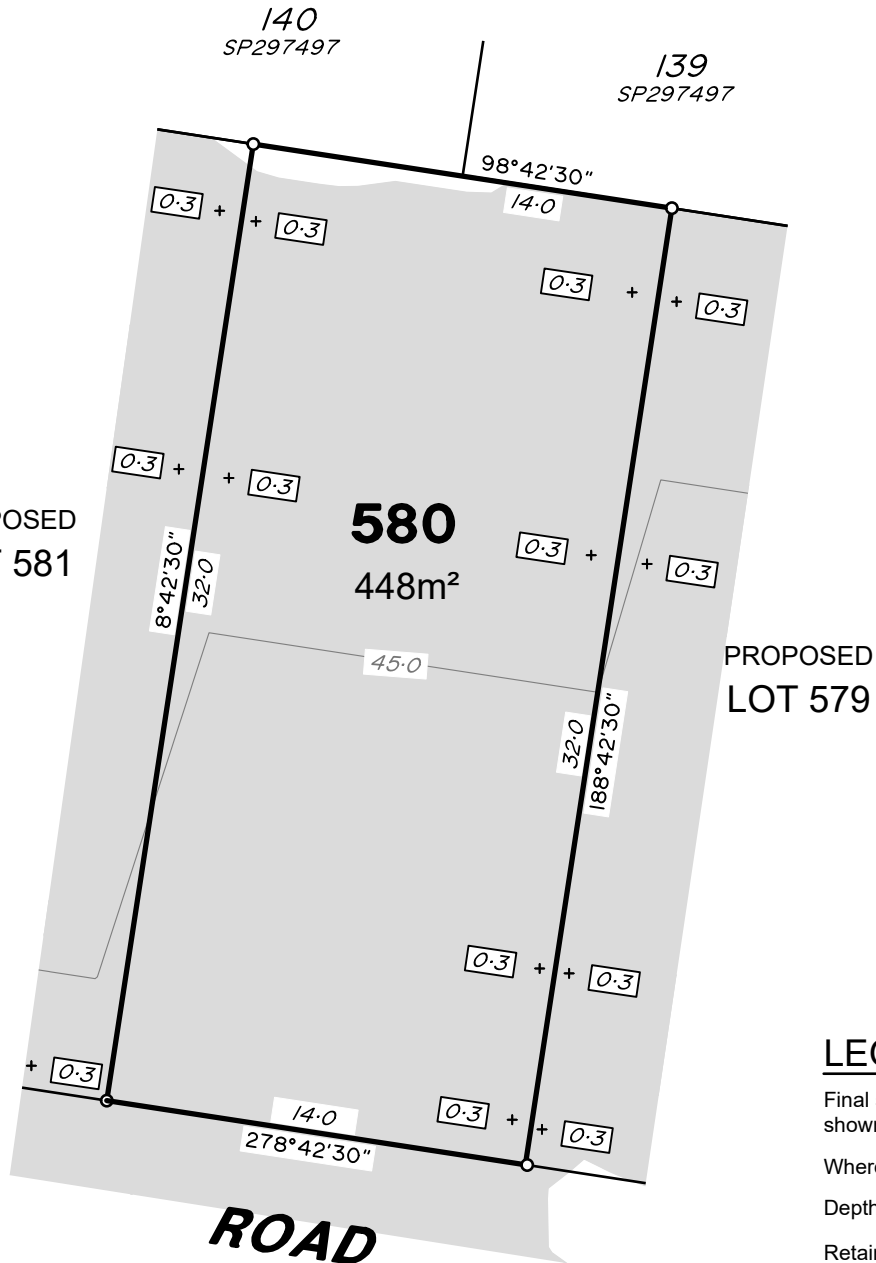
Retaining wall and retaining wall height, shown on the lower side of the wall, have been calculated from digital data supplied by Calbre Engineers and shown as:

(1.2)





PROPOSED
LOT 581



ROAD

LEGEND

Final surface contours based on A.H.D. datum at an interval of 0.5m, shown as: 15.5

Where applicable, areas to be filled are shown as:

Depth of fill, in metres, shown as: - +

Retaining wall and retaining wall height, shown on the lower side of the wall, have been calculated from digital data supplied by Calbre Engineers and shown as:

(1.2)

ADDITIONAL NOTES:

The LOT dimensions and area shown hereon are subject to final field survey and also to the requirements of Council and any other authority which may have requirements under any relevant legislation

Final surface contours, fill areas, depth calcs & retaining walls shown hereon have been supplied by Calibre Engineers.

Compaction of any fill material placed on this site shall be completed to level one inspection and testing services in accordance with AS3798-2007.

Depth of fill values are calculated to the lower of the pre-development surface and the ground surface from Survey.

Copyright © Veris Australia Pty Ltd 27/05/2022.

Dawn
Walloon - Stage 6C2
For
ID_Land

IMPORTANT NOTES:
(These notes are an integral part of this plan)

This plan has been prepared for ID_LAND for the purposes of A Disclosure Plan Under the Land Sales Act 1984 (as amended).

It is not to be used by any other person or corporation or for any other purposes and is subject to the following limitations:

Please refer to the approved Development Application for conditions relating to the LOT and to approved Operational Works drawings for services location and possible easements.

THESE DESIGNS AND DRAWINGS ARE COPYRIGHT AND ARE NOT TO BE USED OR REPRODUCED WITHOUT THE WRITTEN PERMISSION OF VERIS

Data Sources	
Cadastral Boundaries	401364-LC01-(K).dwg
Engineering Design	2022 X-21-001113.03_6C1C2_BASE.dwg
Final Surface Contours	20220513 Design contours Stg 6C1&C2.dwg
Pre-development Surface	20220513 Design tin Stg 6C1&C2.dwg

Issue	Revisions	Date	Drawn
A	Original	27.05.2022	BK

Locality:	Walloon
Local Authority:	Ipswich City Council
Horizontal Meridian:	MGA Zone 56
Vertical Level Datum:	*
Scale:	1:250 @ A4
Designed:	CALIBRE ENGINEERS
Drawn:	BK 27/05/2022
Checked:	DMC & KJJ 27/05/2022
Plot Date:	27 May, 2022
Computer File Ref: 401905-ST6C2-DP(A).dwg	

DISCLOSURE PLAN
of Proposed LOT 580
being part of
Lot 1
on SP331771



veris

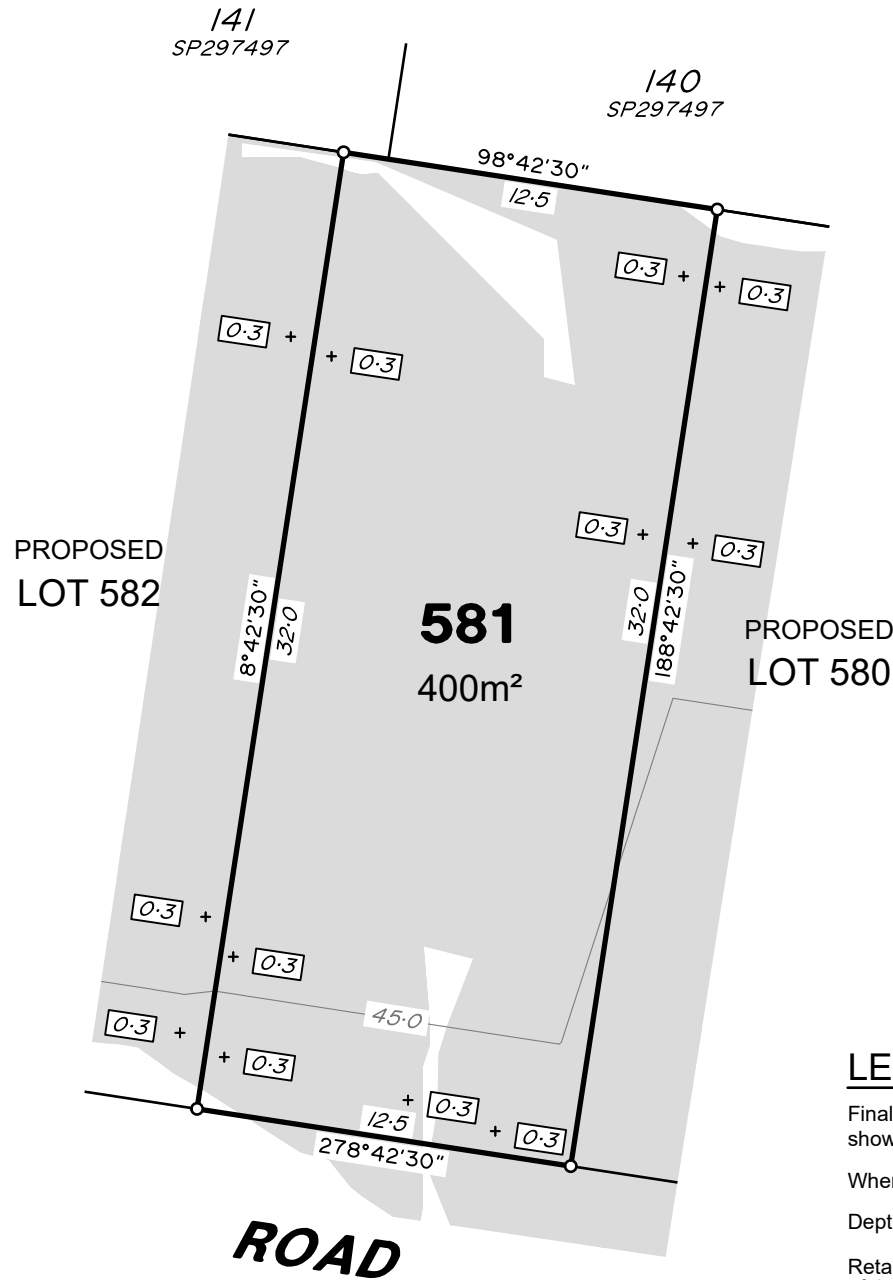
BRISBANE (07) 3686 4700 WHITSUNDAYS (07) 4945 6600

MACKAY (07) 4957 9700 CAIRNS (07) 4252 9400

veris.com.au
ACN 615 735 727
Veris Australia Pty Ltd

Drawing No 401905-DP- 580 Issue A





LEGEND

Final surface contours based on A.H.D. datum at an interval of 0.5m, shown as: 15.5

Where applicable, areas to be filled are shown as:

Depth of fill, in metres, shown as: - + 0.3

Retaining wall and retaining wall height, shown on the lower side of the wall, have been calculated from digital data supplied by Calbre Engineers and shown as:

(1.2)

ADDITIONAL NOTES:

The LOT dimensions and area shown hereon are subject to final field survey and also to the requirements of Council and any other authority which may have requirements under any relevant legislation

Final surface contours, fill areas, depth calcs & retaining walls shown hereon have been supplied by Calibre Engineers.

Compaction of any fill material placed on this site shall be completed to level one inspection and testing services in accordance with AS3798-2007.

Depth of fill values are calculated to the lower of the pre-development surface and the ground surface from Survey.

Copyright © Veris Australia Pty Ltd 27/05/2022.

Dawn
Walloon - Stage 6C2
For
ID_Land

IMPORTANT NOTES:
(These notes are an integral part of this plan)

This plan has been prepared for ID_LAND for the purposes of A Disclosure Plan Under the Land Sales Act 1984 (as amended).

It is not to be used by any other person or corporation or for any other purposes and is subject to the following limitations:

Please refer to the approved Development Application for conditions relating to the LOT and to approved Operational Works drawings for services location and possible easements.

THESE DESIGNS AND DRAWINGS ARE COPYRIGHT AND ARE NOT TO BE USED OR REPRODUCED WITHOUT THE WRITTEN PERMISSION OF VERIS

Data Sources	
Cadastral Boundaries	401364-LC01-(K).dwg
Engineering Design	2022 X-21-001113.03_6C1C2_BASE.dwg
Final Surface Contours	20220513 Design contours Stg 6C1&C2.dwg
Pre-development Surface	20220513 Design tin Stg 6C1&C2.dwg

Issue	Revisions	Date	Drawn
A	Original	27.05.2022	BK

Locality:	Walloon
Local Authority:	Ipswich City Council
Horizontal Meridian:	MGA Zone 56
Vertical Level Datum:	*
Scale:	1:250 @ A4
Designed:	CALIBRE ENGINEERS
Drawn:	BK 27/05/2022
Checked:	DMC & KJJ 27/05/2022
Plot Date:	27 May, 2022
Computer File Ref: 401905-ST6C2-DP(A).dwg	

DISCLOSURE PLAN
of Proposed LOT 581
being part of
Lot 1
on SP331771



veris

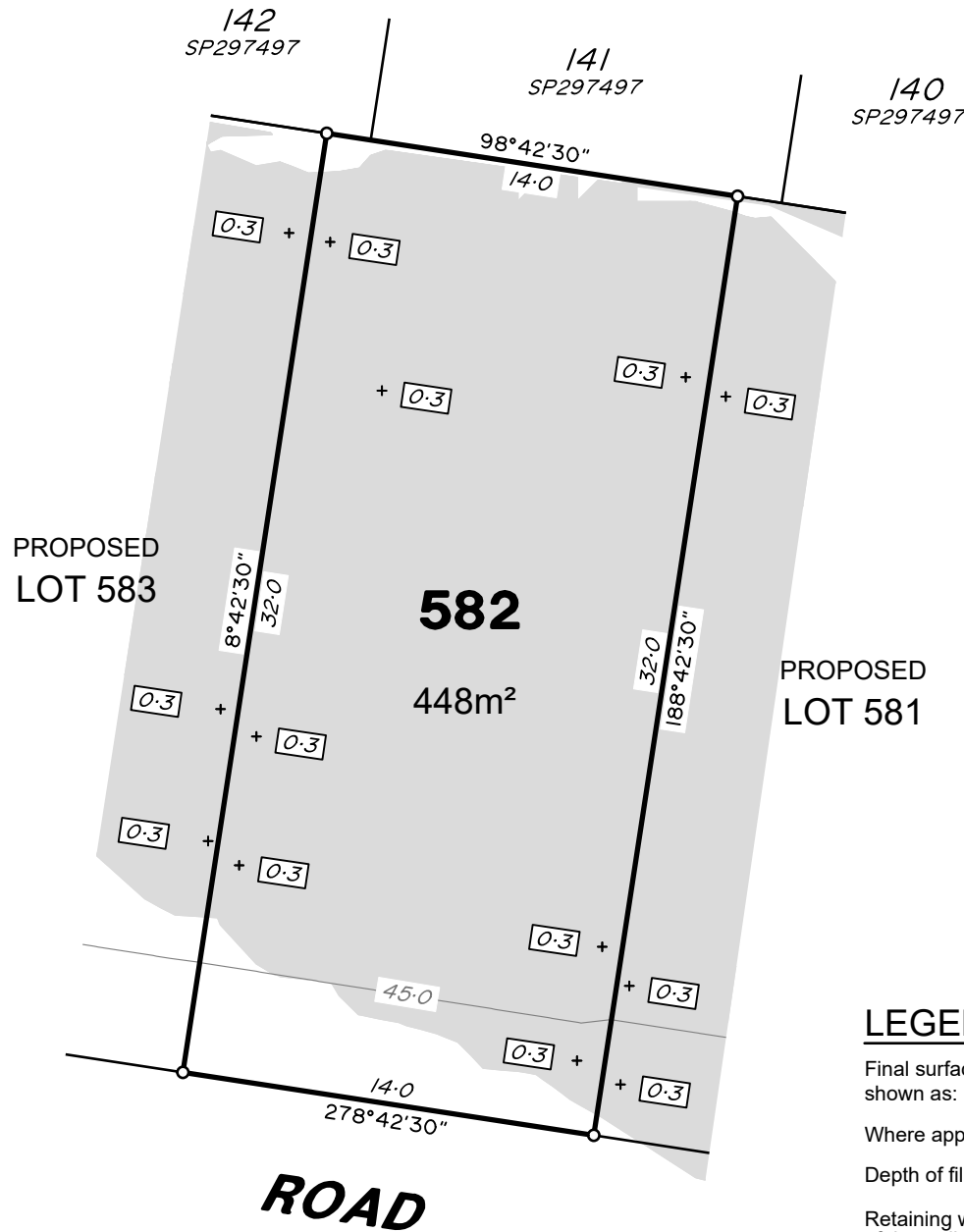
BRISBANE (07) 3686 4700 WHITSUNDAYS (07) 4945 6600

MACKAY (07) 4957 9700 CAIRNS (07) 4252 9400

veris.com.au
ACN 615 735 727
Veris Australia Pty Ltd

Drawing No 401905-DP- 581 Issue A





ROAD

ADDITIONAL NOTES:

The LOT dimensions and area shown hereon are subject to final field survey and also to the requirements of Council and any other authority which may have requirements under any relevant legislation

Final surface contours, fill areas, depth calcs & retaining walls shown hereon have been supplied by Calibre Engineers.

Compaction of any fill material placed on this site shall be completed to level one inspection and testing services in accordance with AS3798-2007.

Depth of fill values are calculated to the lower of the pre-development surface and the ground surface from Survey.

Copyright © Veris Australia Pty Ltd 27/05/2022.

Dawn
Walloon - Stage 6C2
For
ID_Land

IMPORTANT NOTES:
(These notes are an integral part of this plan)

This plan has been prepared for ID_LAND for the purposes of A Disclosure Plan Under the Land Sales Act 1984 (as amended).

It is not to be used by any other person or corporation or for any other purposes and is subject to the following limitations:

Please refer to the approved Development Application for conditions relating to the LOT and to approved Operational Works drawings for services location and possible easements.

THESE DESIGNS AND DRAWINGS ARE COPYRIGHT AND ARE NOT TO BE USED OR REPRODUCED WITHOUT THE WRITTEN PERMISSION OF VERIS

Data Sources

Cadastral Boundaries	401364-LC01-(K).dwg
Engineering Design	2022 X-21-001113.03_6C1C2_BASE.dwg
Final Surface Contours	20220513 Design contours Stg 6C1&C2.dwg
Pre-development Surface	20220513 Design tin Stg 6C1&C2.dwg

Issue	Revisions	Date	Drawn
A	Original	27.05.2022	BK

Locality:	Walloon
Local Authority:	Ipswich City Council
Horizontal Meridian:	MGA Zone 56
Vertical Level Datum:	*
Scale:	1:250 @ A4
Designed:	CALIBRE ENGINEERS
Drawn:	BK 27/05/2022
Checked:	DMC & KJJ 27/05/2022
Plot Date:	27 May, 2022
Computer File Ref:	401905-ST6C2-DP(A).dwg

DISCLOSURE PLAN
of Proposed LOT 582
being part of
Lot 1
on SP331771



veris

BRISBANE (07) 3686 4700 WHITSUNDAYS (07) 4945 6600

MACKAY (07) 4957 9700 CAIRNS (07) 4252 9400

veris.com.au
ACN 615 735 727
Veris Australia Pty Ltd

Drawing No 401905-DP- 582 Issue A

LEGEND

Final surface contours based on A.H.D. datum at an interval of 0.5m, shown as: 15.5

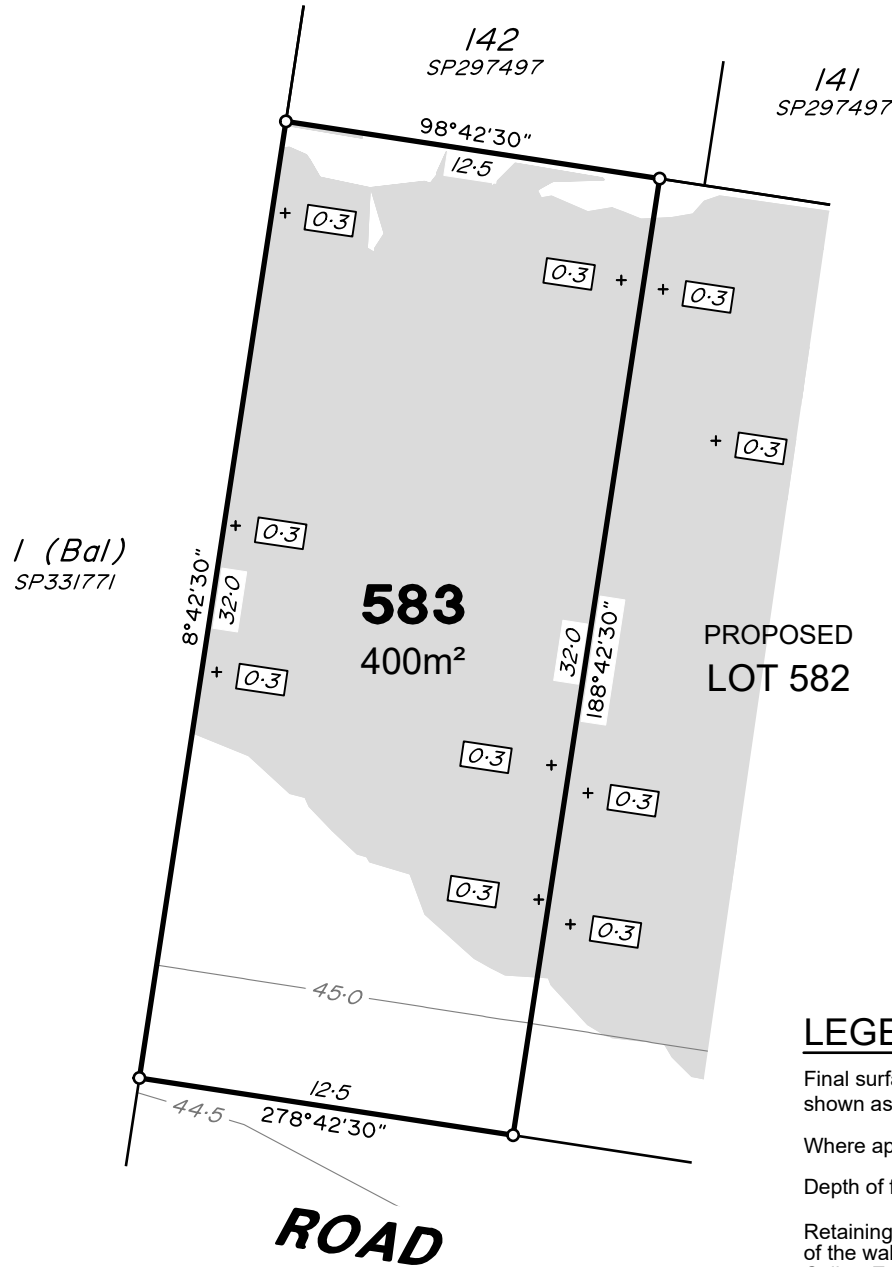
Where applicable, areas to be filled are shown as:

Depth of fill, in metres, shown as:- + 0.3

Retaining wall and retaining wall height, shown on the lower side of the wall, have been calculated from digital data supplied by Calbre Engineers and shown as:

(1.2)





LEGEND

Final surface contours based on A.H.D. datum at an interval of 0.5m, shown as: 15.5

Where applicable, areas to be filled are shown as:

Depth of fill, in metres, shown as: - +

Retaining wall and retaining wall height, shown on the lower side of the wall, have been calculated from digital data supplied by Calbre Engineers and shown as:

(1.2)

ADDITIONAL NOTES:

The LOT dimensions and area shown hereon are subject to final field survey and also to the requirements of Council and any other authority which may have requirements under any relevant legislation

Final surface contours, fill areas, depth calcs & retaining walls shown hereon have been supplied by Calibre Engineers.

Compaction of any fill material placed on this site shall be completed to level one inspection and testing services in accordance with AS3798-2007.

Depth of fill values are calculated to the lower of the pre-development surface and the ground surface from Survey.

Copyright © Veris Australia Pty Ltd 27/05/2022.

Dawn
Walloon - Stage 6C2
For
ID_Land

IMPORTANT NOTES:
(These notes are an integral part of this plan)

This plan has been prepared for ID_LAND for the purposes of A Disclosure Plan Under the Land Sales Act 1984 (as amended).

It is not to be used by any other person or corporation or for any other purposes and is subject to the following limitations:

Please refer to the approved Development Application for conditions relating to the LOT and to approved Operational Works drawings for services location and possible easements.

THESE DESIGNS AND DRAWINGS ARE COPYRIGHT AND ARE NOT TO BE USED OR REPRODUCED WITHOUT THE WRITTEN PERMISSION OF VERIS

Data Sources			
Cadastral Boundaries	401364-LC01-(K).dwg		
Engineering Design	2022 X-21-001113.03_6C1C2_BASE.dwg		
Final Surface Contours	20220513 Design contours Stg 6C1&C2.dwg		
Pre-development Surface	20220513 Design tin Stg 6C1&C2.dwg		

Issue	Revisions	Date	Drawn
A	Original	27.05.2022	BK

Locality:	Walloon
Local Authority:	Ipswich City Council
Horizontal Meridian:	MGA Zone 56
Vertical Level Datum:	*
Scale:	1:250 @ A4
Designed:	CALIBRE ENGINEERS
Drawn:	BK 27/05/2022
Checked:	DMC & KJJ 27/05/2022
Plot Date:	27 May, 2022
Computer File Ref: 401905-ST6C2-DP(A).dwg	

DISCLOSURE PLAN
of Proposed LOT 583
being part of
Lot 1
on SP331771



veris

BRISBANE (07) 3686 4700 WHITSUNDAYS (07) 4945 6600

MACKAY (07) 4957 9700 CAIRNS (07) 4252 9400

veris.com.au
ACN 615 735 727
Veris Australia Pty Ltd

Drawing No 401905-DP- 583 Issue A

