

### DISCLOSURE PLAN FOR PROPOSED LOT 253

This plan shows:  
 Details of Proposed Lot 253 on the Reconfiguration Plan Plan 0715-0430-13 D007, Rev 04 by Tract Consultants.  
 A Minor Change to a Reconfiguration of a lot application, being application number 3105/2016/MAMC/B to reconfigure Lot 805 on SP297497 and Lot 1 on SP179238 at Walloon is currently before Ipswich City Council for approval subject to conditions.

This Disclosure Plan was prepared in accordance with the Land Sales Act 1984 to enable the sale of proposed lots. This plan should not be used for design purposes as the details shown on this plan may vary from final site conditions. Waterlea Nominees Co Pty Ltd recommends using As Constructed information for design purposes.

Existing surface details shown hereon were supplied by Premise on 5th September 2018

Design surface contours based on AHD D datum at an interval on 0.25m, shown as: 63.25

Where applicable, Easements are shown as:

Where applicable areas to be filled are shown as:

Where applicable areas to be cut are shown as:

Maximum Fill Depth: 2.2 m

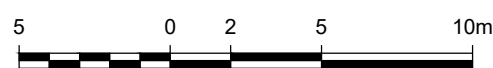
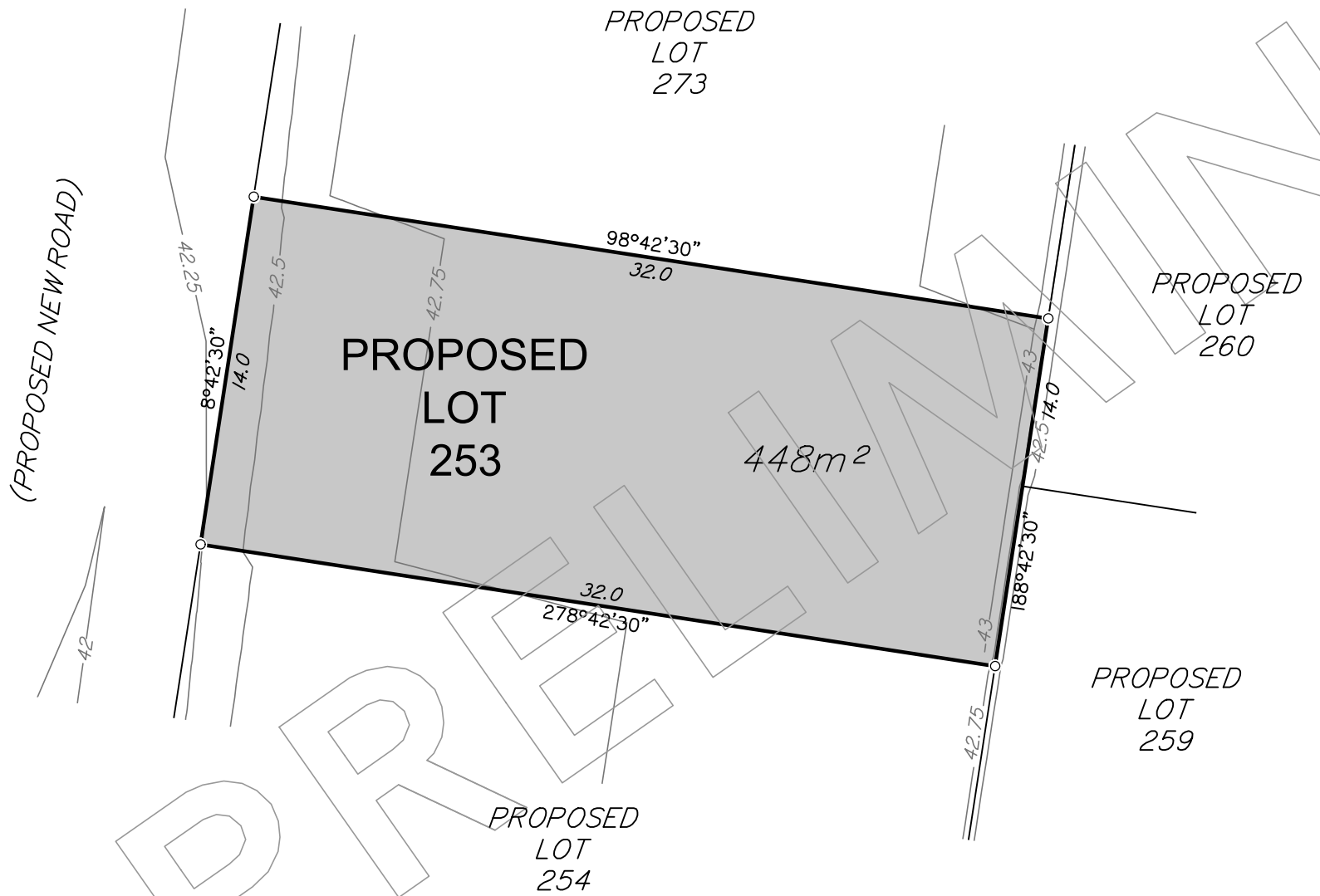
Fill Compaction Rate: 95% Standard Dry Density, carried out in accordance with Australian Standard AS 3798 - 2007 and Ipswich City Council Planning Scheme Policy 3 - General Works, Part 4 - Earthworks.

Project:  
**WATERLEA STAGE 3C**

Client:  
**WATERLEA NOMINEES CO PTY LTD**

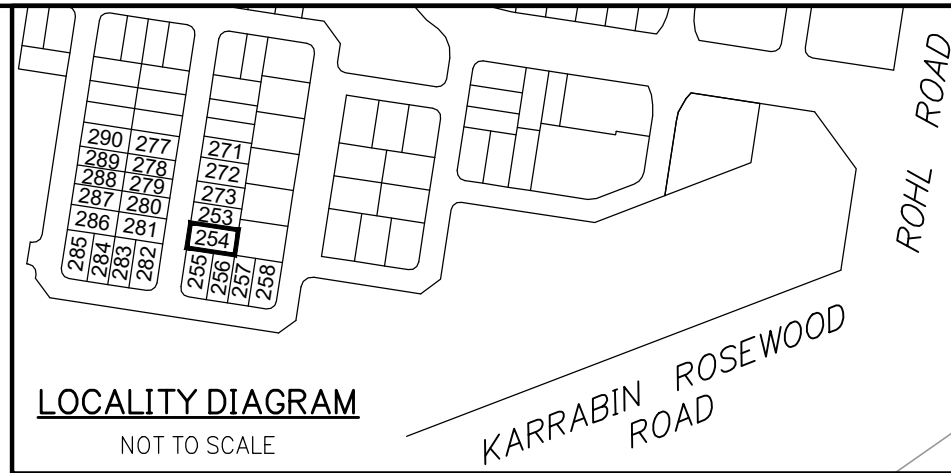


Western Corridor Office  
 Level 6, Springfield Tower  
 145 Sinnathamby Boulevard  
 Springfield Central QLD 4300  
 PO Box 4647  
 Springfield QLD 4300  
 t (07) 3470 8100  
 f (07) 3470 8101  
 e info@landpartners.com.au  
 w www.landpartners.com.au



SCALE 1:250

DRAWN	KT	DATUM	AHD D
DATE	24/09/2018	LEVEL ORIGIN	PSM193875 RL46.405
CHECKED	AW	COMPUTER FILE	WC007157-03C-2-1
DATE	25/09/2018	SCALE (@ A3)	1:250
APPROVED	REM	PLAN NUMBER	WC007157-03C-003-1
DATE	26/09/2018		



### DISCLOSURE PLAN FOR PROPOSED LOT 254

This plan shows:  
 Details of Proposed Lot 254 on the Reconfiguration Plan  
 Plan 0715-0430-13 D007, Rev 04 by Tract Consultants.  
 A Minor Change to a Reconfiguration of a lot application, being  
 application number 3105/2016/MAMC/B to reconfigure Lot 805  
 on SP297497 and Lot 1 on SP179238 at Walloon is currently  
 before Ipswich City Council for approval subject to conditions.

This Disclosure Plan was prepared in accordance with the Land Sales  
 Act 1984 to enable the sale of proposed lots. This plan should not be  
 used for design purposes as the details shown on this plan may vary  
 from final site conditions. Waterlea Nominees Co Pty Ltd recommends  
 using As Constructed information for design purposes.

Existing surface details shown hereon were supplied  
 by Premise on 5th September 2018

Design surface contours based on AHD D  
 datum at an interval on 0.25m, shown as:  63.25

Where applicable, Easements are shown as:

Where applicable areas to be filled are shown as:

Where applicable areas to be cut are shown as: + + +

Maximum Fill Depth: 2.2 m

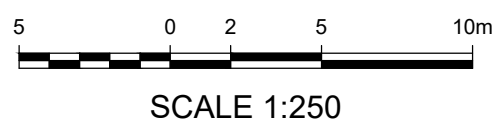
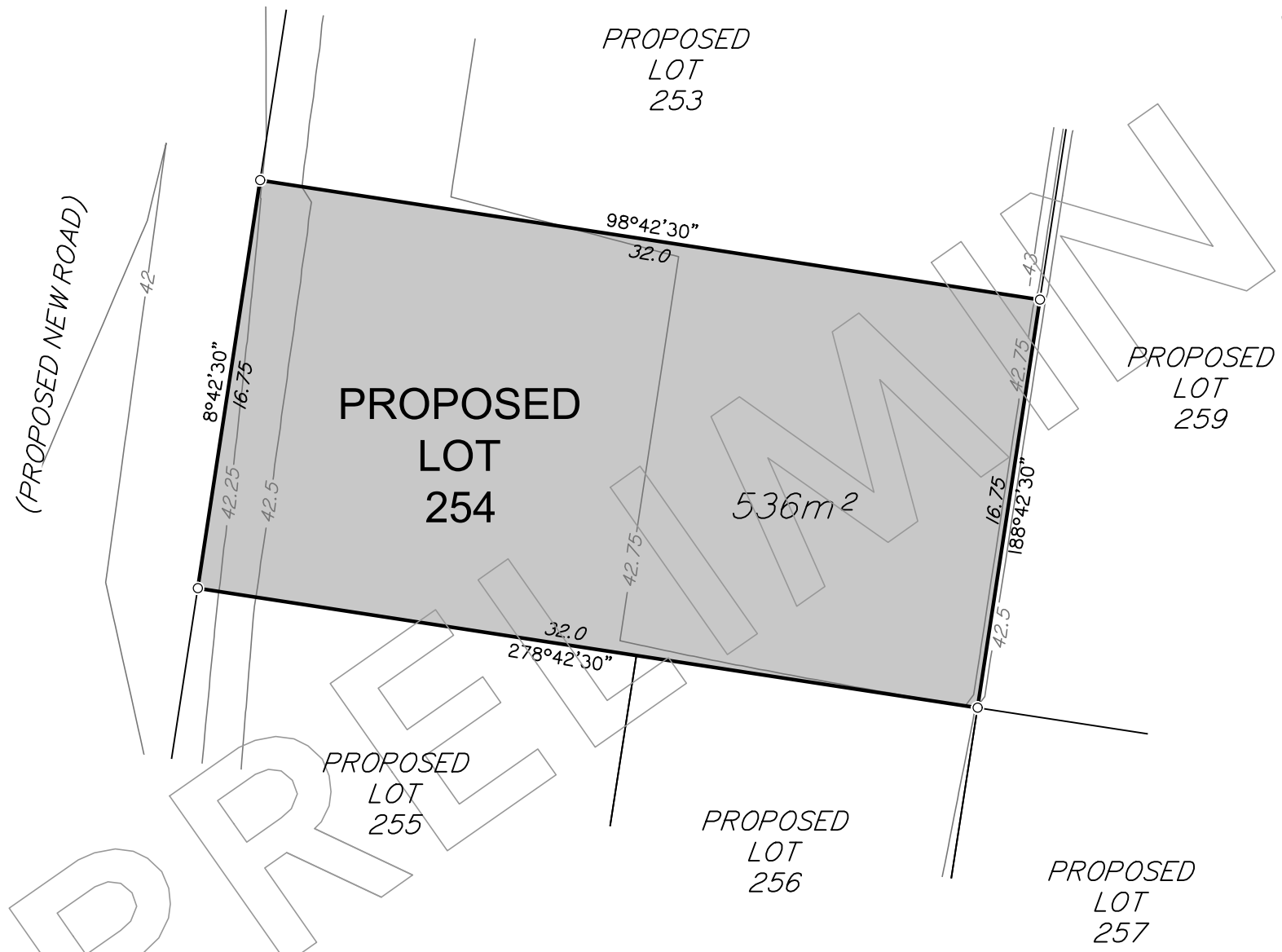
Fill Compaction Rate: 95% Standard Dry Density, carried out in  
 accordance with Australian Standard AS 3798 - 2007 and Ipswich City  
 Council Planning Scheme Policy 3 - General Works, Part 4 - Earthworks.

Project:  
**WATERLEA  
 STAGE 3C**

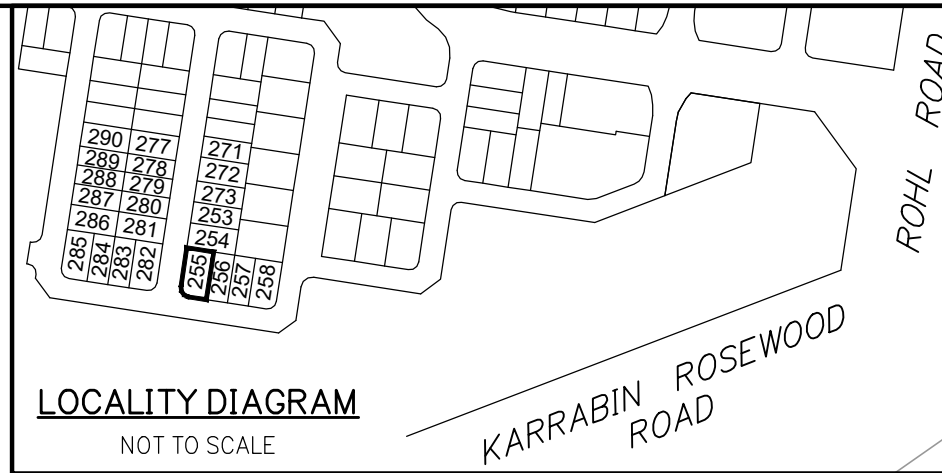
Client:  
**WATERLEA  
 NOMINEES CO  
 PTY LTD**



Western Corridor Office  
 Level 6, Springfield Tower  
 145 Sinnathamby Boulevard  
 Springfield Central QLD 4300  
 PO Box 4647  
 Springfield QLD 4300  
 t (07) 3470 8100  
 f (07) 3470 8101  
 e info@landpartners.com.au  
 w www.landpartners.com.au



DRAWN	KT	DATUM	AHD D
DATE	24/09/2018	LEVEL ORIGIN	PSM193875 RL46.405
CHECKED	AW	COMPUTER FILE	WC007157-03C-2-1
DATE	25/09/2018	SCALE (@ A3)	1:250
APPROVED	REM	PLAN NUMBER	<b>WC007157-03C-004-1</b>
DATE	26/09/2018		



### DISCLOSURE PLAN FOR PROPOSED LOT 255

This plan shows:  
 Details of Proposed Lot 255 on the Reconfiguration Plan  
 Plan 0715-0430-13 D007, Rev 04 by Tract Consultants.  
 A Minor Change to a Reconfiguration of a lot application, being  
 application number 3105/2016/MAMC/B to reconfigure Lot 805  
 on SP297497 and Lot 1 on SP179238 at Walloon is currently  
 before Ipswich City Council for approval subject to conditions.

This Disclosure Plan was prepared in accordance with the Land Sales  
 Act 1984 to enable the sale of proposed lots. This plan should not be  
 used for design purposes as the details shown on this plan may vary  
 from final site conditions. Waterlea Nominees Co Pty Ltd recommends  
 using As Constructed information for design purposes.

Existing surface details shown hereon were supplied  
 by Premise on 5th September 2018

Design surface contours based on AHD D  
 datum at an interval on 0.25m, shown as:  63.25

Where applicable, Easements are shown as:

Where applicable areas to be filled are shown as:

Where applicable areas to be cut are shown as: + + +

Maximum Fill Depth: 2.0 m

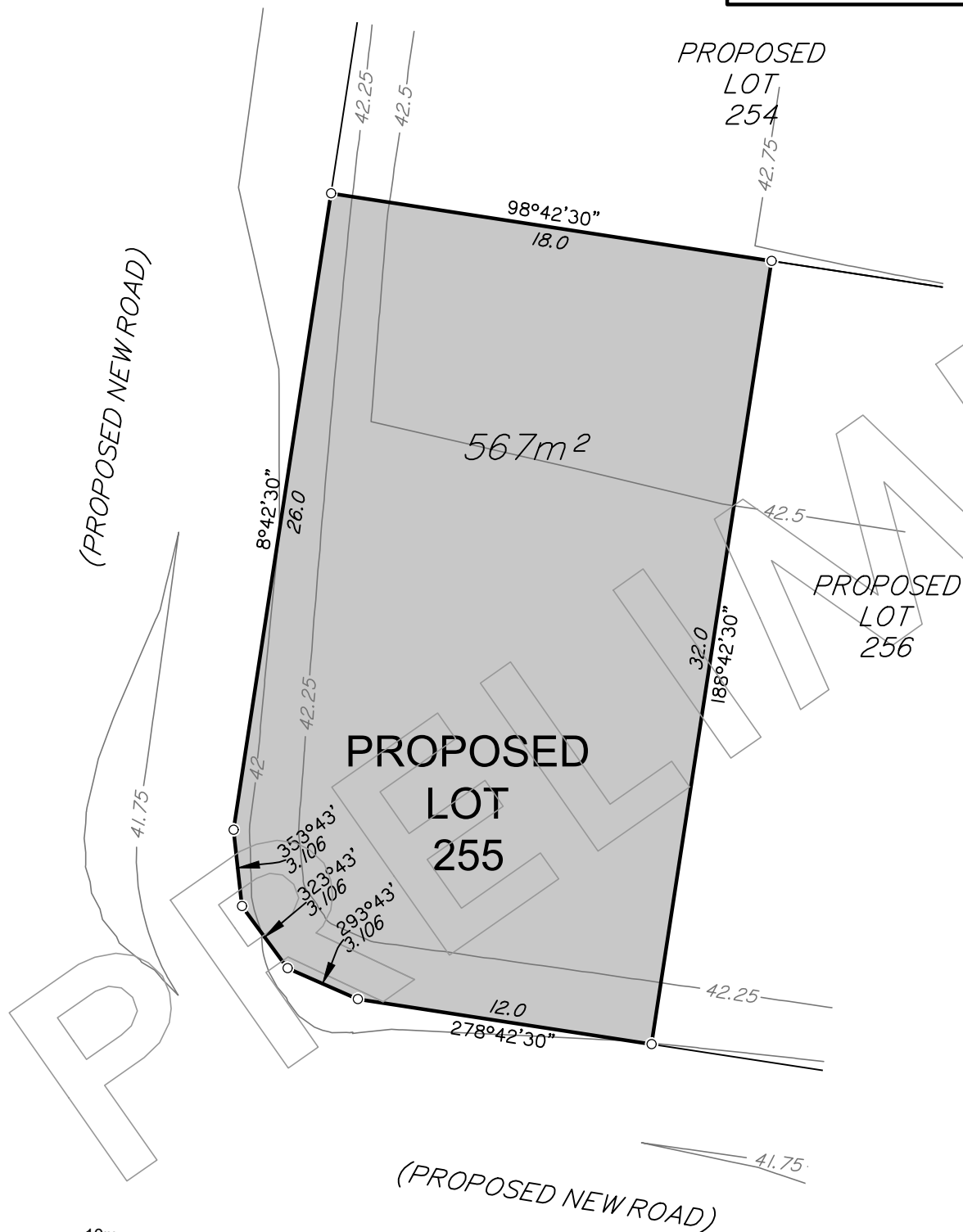
Fill Compaction Rate: 95% Standard Dry Density, carried out in  
 accordance with Australian Standard AS 3798 - 2007 and Ipswich City  
 Council Planning Scheme Policy 3 - General Works, Part 4 - Earthworks.

Project:  
**WATERLEA  
 STAGE 3C**

Client:  
**WATERLEA  
 NOMINEES CO  
 PTY LTD**

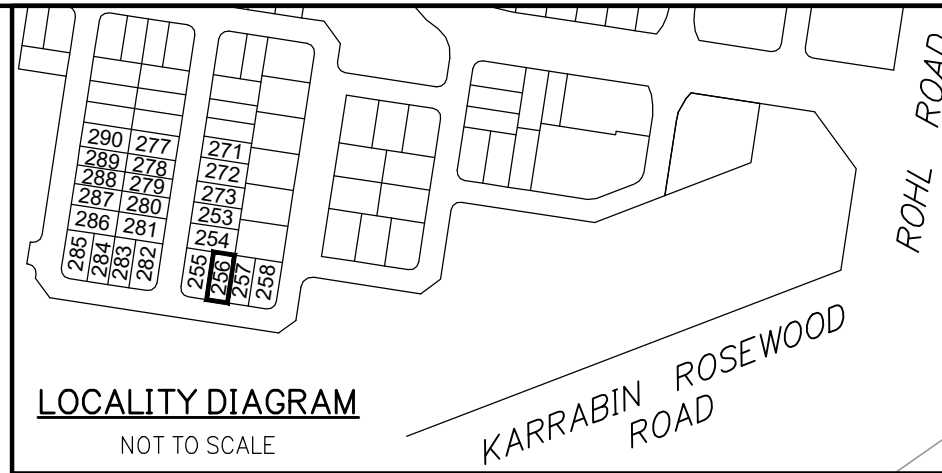


Western Corridor Office  
 Level 6, Springfield Tower  
 145 Sinnathamby Boulevard  
 Springfield Central QLD 4300  
 PO Box 4647  
 Springfield QLD 4300  
 t (07) 3470 8100  
 f (07) 3470 8101  
 e info@landpartners.com.au  
 www.landpartners.com.au



SCALE 1:250

DRAWN	KT	DATUM	AHD D
DATE	24/09/2018	LEVEL ORIGIN	PSM193875 RL46.405
CHECKED	AW	COMPUTER FILE	WC007157-03C-2-1
DATE	25/09/2018	SCALE (@ A3)	1:250
APPROVED	REM	PLAN NUMBER	WC007157-03C-005-1
DATE	26/09/2018		



### DISCLOSURE PLAN FOR PROPOSED LOT 256

This plan shows:  
 Details of Proposed Lot 256 on the Reconfiguration Plan  
 Plan 0715-0430-13 D007, Rev 04 by Tract Consultants.  
 A Minor Change to a Reconfiguration of a lot application, being  
 application number 3105/2016/MAMC/B to reconfigure Lot 805  
 on SP297497 and Lot 1 on SP179238 at Walloon is currently  
 before Ipswich City Council for approval subject to conditions.

This Disclosure Plan was prepared in accordance with the Land Sales  
 Act 1984 to enable the sale of proposed lots. This plan should not be  
 used for design purposes as the details shown on this plan may vary  
 from final site conditions. Waterlea Nominees Co Pty Ltd recommends  
 using As Constructed information for design purposes.

Existing surface details shown hereon were supplied  
 by Premise on 5th September 2018

- Design surface contours based on AHD D  
 datum at an interval on 0.25m, shown as:  63.25
- Where applicable, Easements are shown as:
- Where applicable areas to be filled are shown as:
- Where applicable areas to be cut are shown as: + + +

Maximum Fill Depth: 2.1 m  
 Fill Compaction Rate: 95% Standard Dry Density, carried out in  
 accordance with Australian Standard AS 3798 - 2007 and Ipswich City  
 Council Planning Scheme Policy 3 - General Works, Part 4 - Earthworks.

Project:  
**WATERLEA  
 STAGE 3C**

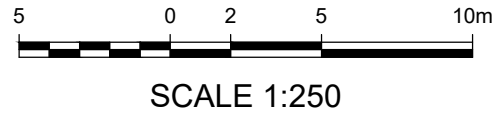
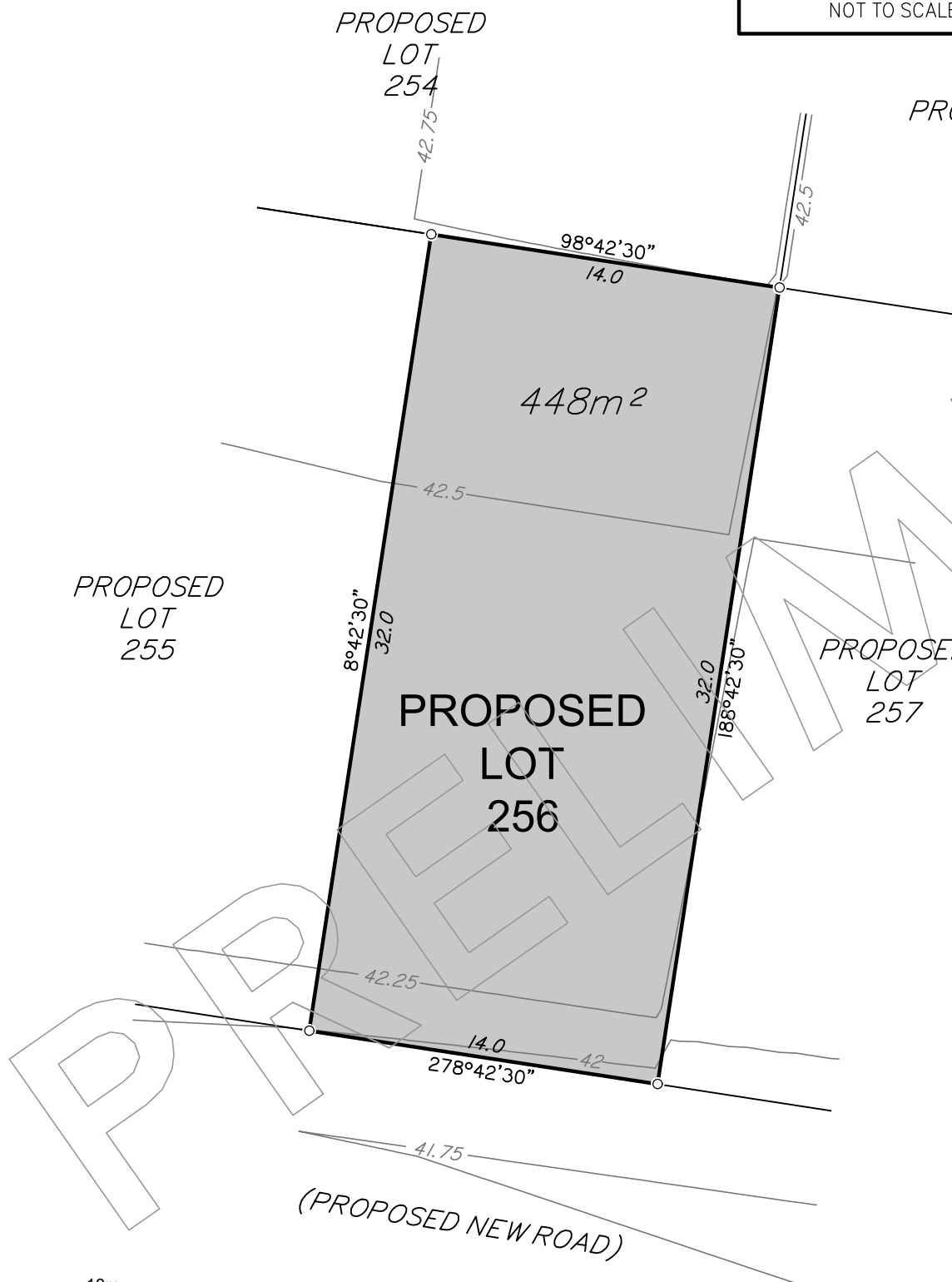
Client:  
**WATERLEA  
 NOMINEES CO  
 PTY LTD**



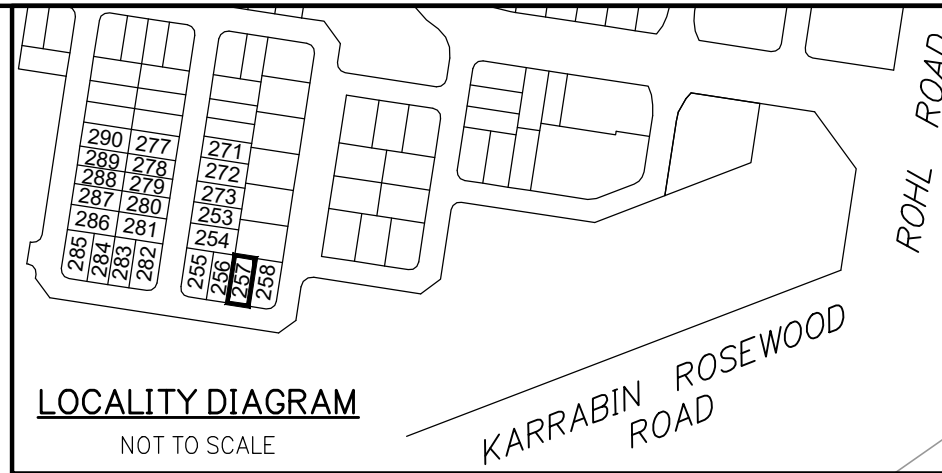
**LANDPARTNERS**  
 built environment consultants

Western Corridor Office  
 Level 6, Springfield Tower  
 145 Sinnathamby Boulevard  
 Springfield Central QLD 4300  
 PO Box 4647  
 Springfield QLD 4300

t (07) 3470 8100  
 f (07) 3470 8101  
 e info@landpartners.com.au  
 www.landpartners.com.au



DRAWN	KT	DATUM	AHD D
DATE	24/09/2018	LEVEL ORIGIN	PSM193875 RL46.405
CHECKED	AW	COMPUTER FILE	WC007157-03C-2-1
DATE	25/09/2018	SCALE (@ A3)	1:250
APPROVED	REM	PLAN NUMBER	WC007157-03C-006-1
DATE	26/09/2018		



### DISCLOSURE PLAN FOR PROPOSED LOT 257

This plan shows:  
 Details of Proposed Lot 257 on the Reconfiguration Plan  
 Plan 0715-0430-13 D007, Rev 04 by Tract Consultants.  
 A Minor Change to a Reconfiguration of a lot application, being  
 application number 3105/2016/MAMC/B to reconfigure Lot 805  
 on SP297497 and Lot 1 on SP179238 at Walloon is currently  
 before Ipswich City Council for approval subject to conditions.

This Disclosure Plan was prepared in accordance with the Land Sales  
 Act 1984 to enable the sale of proposed lots. This plan should not be  
 used for design purposes as the details shown on this plan may vary  
 from final site conditions. Waterlea Nominees Co Pty Ltd recommends  
 using As Constructed information for design purposes.

Existing surface details shown hereon were supplied  
 by Premise on 5th September 2018

Design surface contours based on AHD D  
 datum at an interval on 0.25m, shown as:  63.25

Where applicable, Easements are shown as:

Where applicable areas to be filled are shown as:

Where applicable areas to be cut are shown as: + + +

Maximum Fill Depth: 1.9 m

Fill Compaction Rate: 95% Standard Dry Density, carried out in  
 accordance with Australian Standard AS 3798 - 2007 and Ipswich City  
 Council Planning Scheme Policy 3 - General Works, Part 4 - Earthworks.

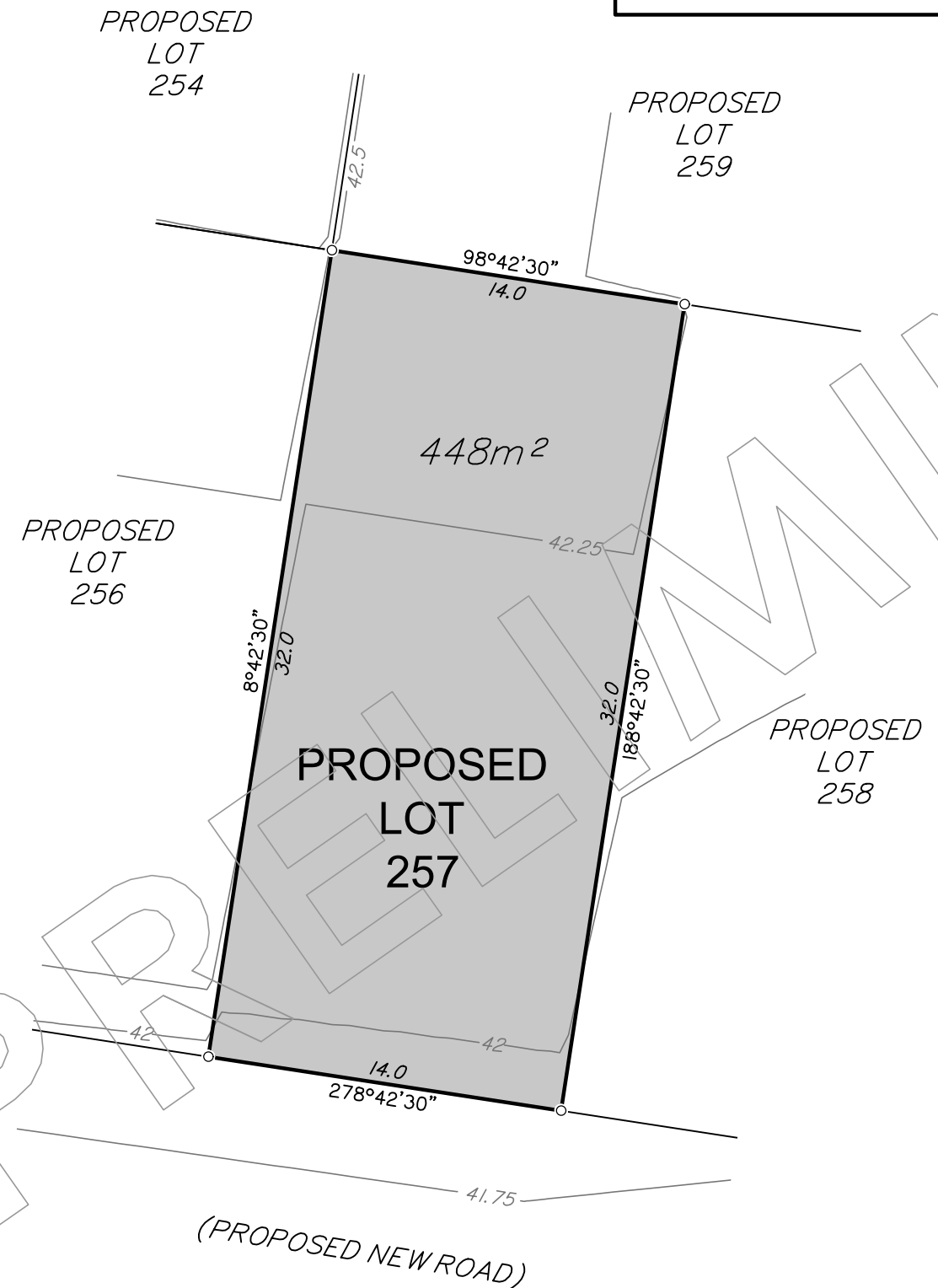
Project:  
**WATERLEA  
 STAGE 3C**

Client:  
**WATERLEA  
 NOMINEES CO  
 PTY LTD**



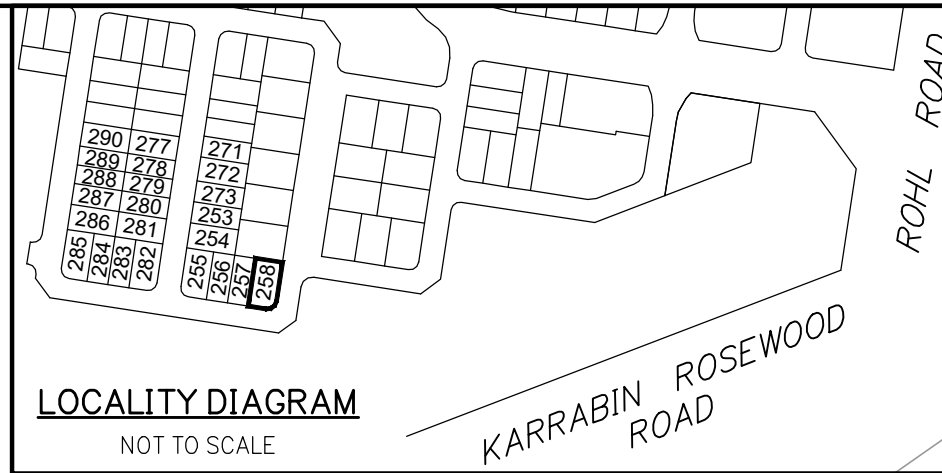
Western Corridor Office  
 Level 6, Springfield Tower  
 145 Sinnathamby Boulevard  
 Springfield Central QLD 4300  
 PO Box 4647  
 Springfield QLD 4300

t (07) 3470 8100  
 f (07) 3470 8101  
 e info@landpartners.com.au  
 w www.landpartners.com.au



SCALE 1:250

DRAWN	KT	DATUM	AHD D
DATE	24/09/2018	LEVEL ORIGIN	PSM193875 RL46.405
CHECKED	AW	COMPUTER FILE	WC007157-03C-2-1
DATE	25/09/2018	SCALE (@ A3)	1:250
APPROVED	REM	PLAN NUMBER	WC007157-03C-007-1
DATE	26/09/2018		



### DISCLOSURE PLAN FOR PROPOSED LOT 258

This plan shows:  
 Details of Proposed Lot 258 on the Reconfiguration Plan Plan 0715-0430-13 D007, Rev 04 by Tract Consultants.  
 A Minor Change to a Reconfiguration of a lot application, being application number 3105/2016/MAMC/B to reconfigure Lot 805 on SP297497 and Lot 1 on SP179238 at Walloon is currently before Ipswich City Council for approval subject to conditions.

This Disclosure Plan was prepared in accordance with the Land Sales Act 1984 to enable the sale of proposed lots. This plan should not be used for design purposes as the details shown on this plan may vary from final site conditions. Waterlea Nominees Co Pty Ltd recommends using As Constructed information for design purposes.

Existing surface details shown hereon were supplied by Premise on 5th September 2018

- Design surface contours based on AHD D datum at an interval on 0.25m, shown as: 63.25
- Where applicable, Easements are shown as:
- Where applicable areas to be filled are shown as:
- Where applicable areas to be cut are shown as:

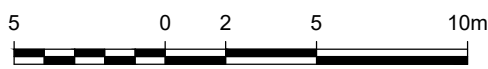
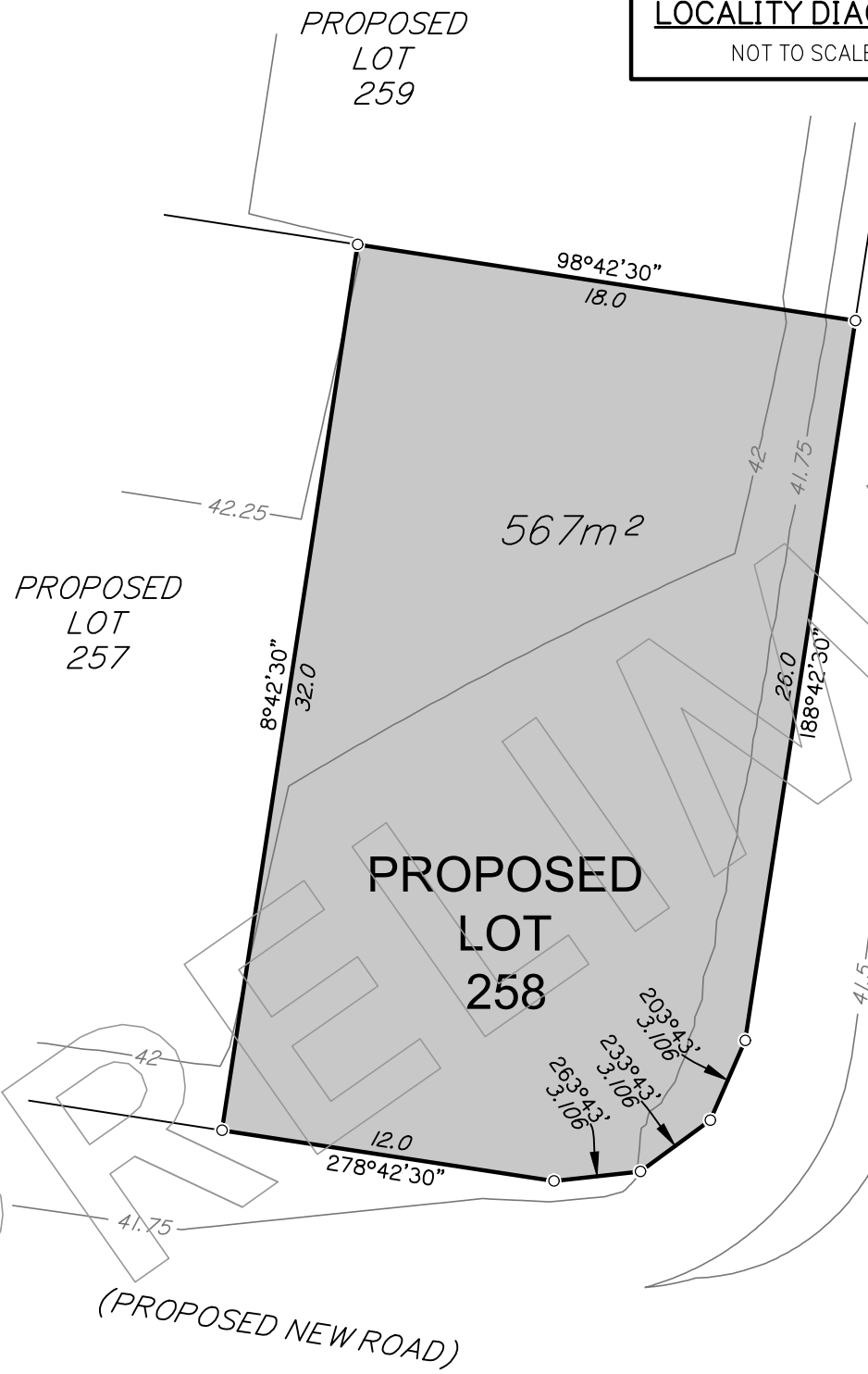
Maximum Fill Depth: 1.7 m  
 Fill Compaction Rate: 95% Standard Dry Density, carried out in accordance with Australian Standard AS 3798 - 2007 and Ipswich City Council Planning Scheme Policy 3 - General Works, Part 4 - Earthworks.

Project:	Client:
<b>WATERLEA STAGE 3C</b>	<b>WATERLEA NOMINEES CO PTY LTD</b>



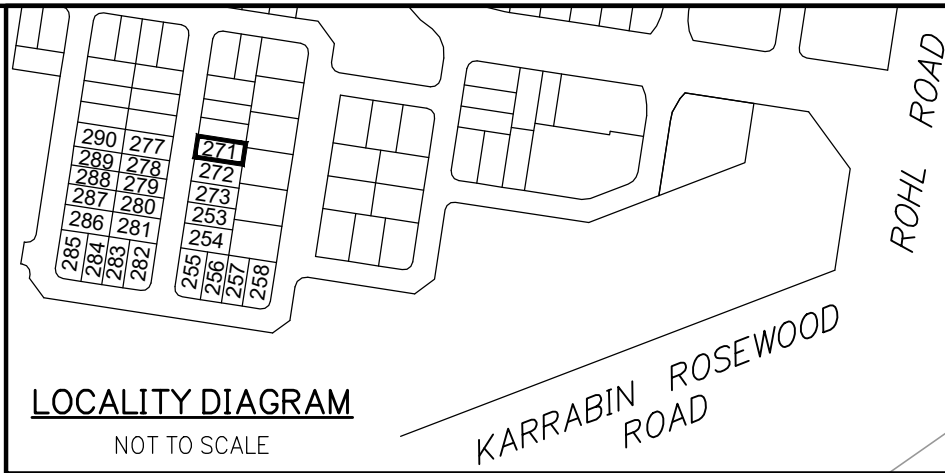
Western Corridor Office  
 Level 6, Springfield Tower  
 145 Sinnathamby Boulevard  
 Springfield Central QLD 4300  
 PO Box 4647  
 Springfield QLD 4300

t (07) 3470 8100  
 f (07) 3470 8101  
 e info@landpartners.com.au  
 w www.landpartners.com.au



SCALE 1:250

DRAWN	KT	DATUM	AHD D
DATE	24/09/2018	LEVEL ORIGIN	PSM193875 RL46.405
CHECKED	AW	COMPUTER FILE	WC007157-03C-2-1
DATE	25/09/2018	SCALE (@ A3)	1:250
APPROVED	REM	PLAN NUMBER	<b>WC007157-03C-008-1</b>
DATE	26/09/2018		



### DISCLOSURE PLAN FOR PROPOSED LOT 271

This plan shows:  
 Details of Proposed Lot 271 on the Reconfiguration Plan  
 Plan 0715-0430-13 D007, Rev 04 by Tract Consultants.  
 A Minor Change to a Reconfiguration of a lot application, being  
 application number 3105/2016/MAMC/B to reconfigure Lot 805  
 on SP297497 and Lot 1 on SP179238 at Walloon is currently  
 before Ipswich City Council for approval subject to conditions.

This Disclosure Plan was prepared in accordance with the Land Sales  
 Act 1984 to enable the sale of proposed lots. This plan should not be  
 used for design purposes as the details shown on this plan may vary  
 from final site conditions. Waterlea Nominees Co Pty Ltd recommends  
 using As Constructed information for design purposes.

Existing surface details shown hereon were supplied  
 by Premise on 5th September 2018

Design surface contours based on AHD D  
 datum at an interval on 0.25m, shown as:  63.25

Where applicable, Easements are shown as:

Where applicable areas to be filled are shown as:

Where applicable areas to be cut are shown as: + + +

Maximum Fill Depth: 2.2 m

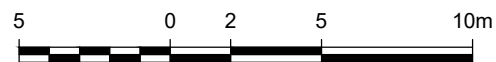
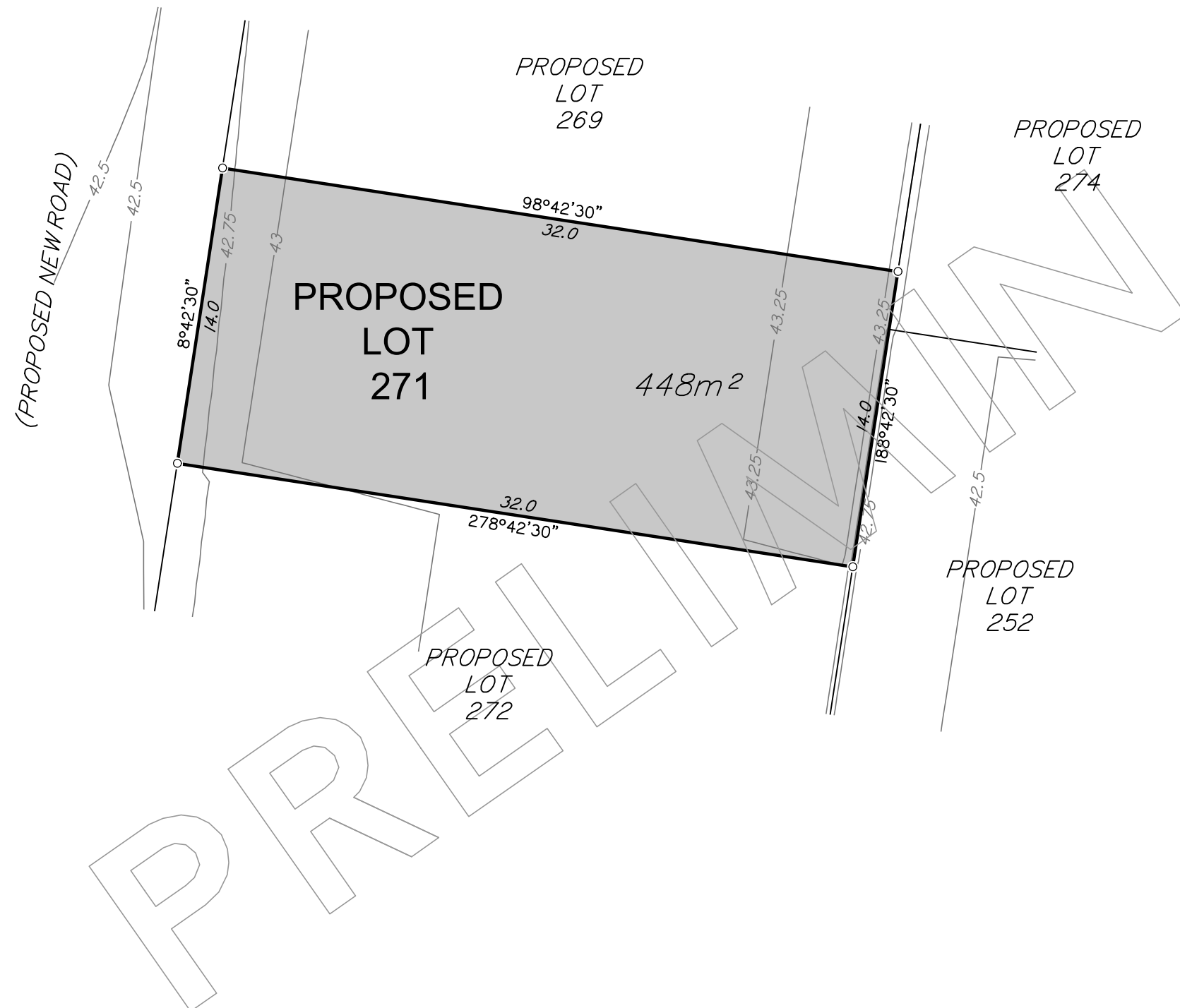
Fill Compaction Rate: 95% Standard Dry Density, carried out in  
 accordance with Australian Standard AS 3798 – 2007 and Ipswich City  
 Council Planning Scheme Policy 3 – General Works, Part 4 – Earthworks.

Project:  
**WATERLEA  
 STAGE 3C**

Client:  
**WATERLEA  
 NOMINEES CO  
 PTY LTD**

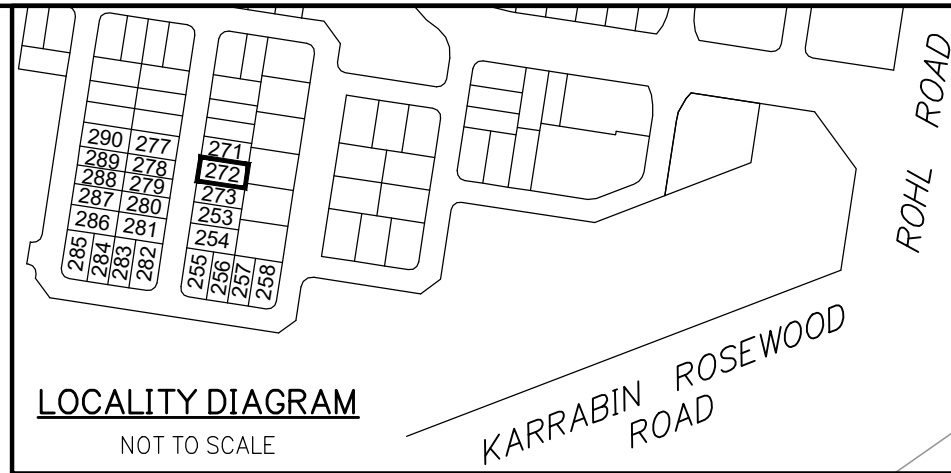


Western Corridor Office  
 Level 6, Springfield Tower  
 145 Sinnathamby Boulevard  
 Springfield Central QLD 4300  
 PO Box 4647  
 Springfield QLD 4300  
 t (07) 3470 8100  
 f (07) 3470 8101  
 e info@landpartners.com.au  
 www.landpartners.com.au



SCALE 1:250

DRAWN	KT	DATUM	AHD D
DATE	24/09/2018	LEVEL ORIGIN	PSM193875 RL46.405
CHECKED	AW	COMPUTER FILE	WC007157-03C-2-1
DATE	25/09/2018	SCALE (@ A3)	1:250
APPROVED	REM	PLAN NUMBER	
DATE	26/09/2018	<b>WC007157-03C-009-1</b>	



### DISCLOSURE PLAN FOR PROPOSED LOT 272

This plan shows:  
 Details of Proposed Lot 272 on the Reconfiguration Plan  
 Plan 0715-0430-13 D007, Rev 04 by Tract Consultants.  
 A Minor Change to a Reconfiguration of a lot application, being  
 application number 3105/2016/MAMC/B to reconfigure Lot 805  
 on SP297497 and Lot 1 on SP179238 at Walloon is currently  
 before Ipswich City Council for approval subject to conditions.

This Disclosure Plan was prepared in accordance with the Land Sales  
 Act 1984 to enable the sale of proposed lots. This plan should not be  
 used for design purposes as the details shown on this plan may vary  
 from final site conditions. Waterlea Nominees Co Pty Ltd recommends  
 using As Constructed information for design purposes.

Existing surface details shown hereon were supplied  
 by Premise on 5th September 2018

Design surface contours based on AHD D  
 datum at an interval on 0.25m, shown as: — 63.25 —

Where applicable, Easements are shown as:

Where applicable areas to be filled are shown as:

Where applicable areas to be cut are shown as:

Maximum Fill Depth: 2.2 m

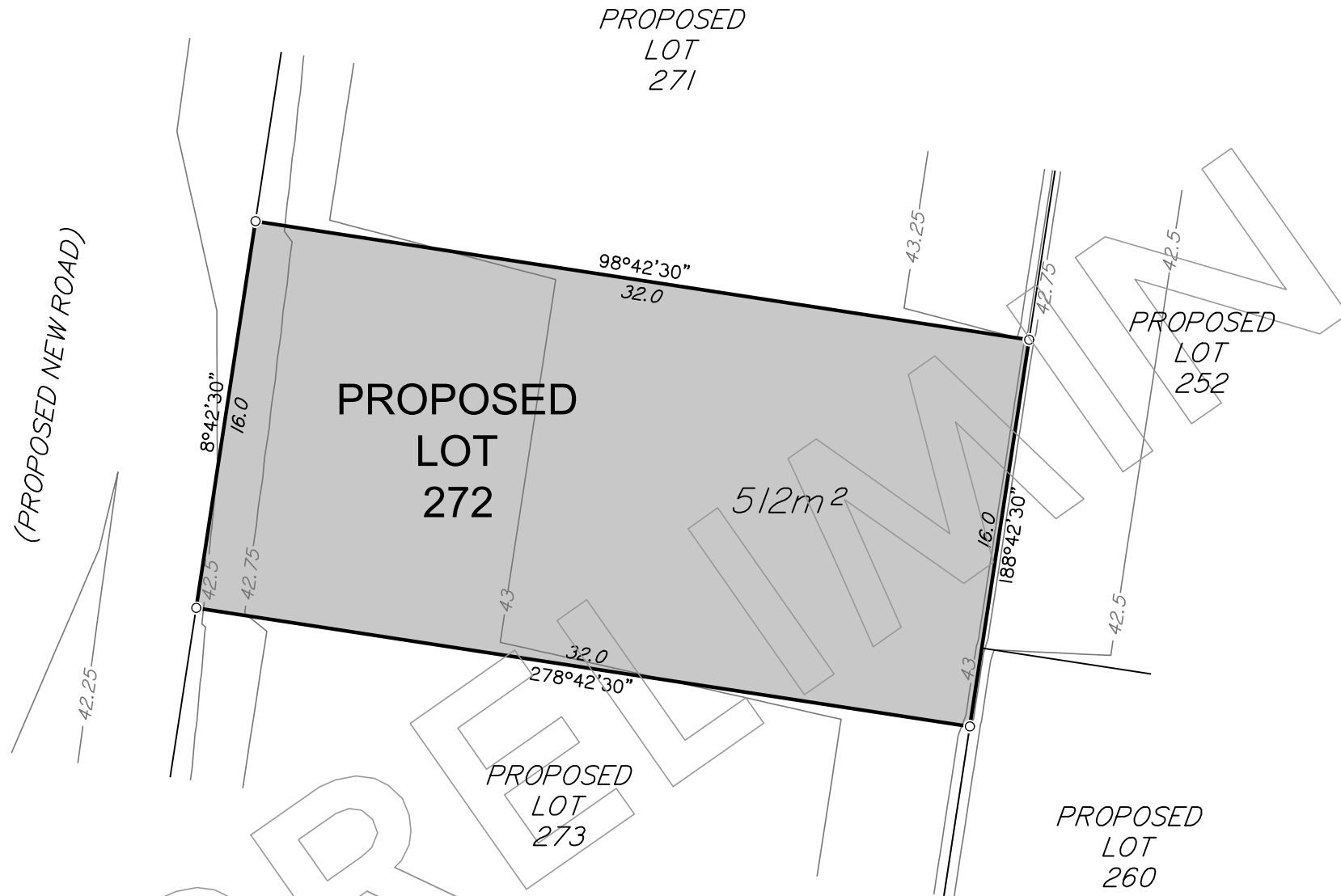
Fill Compaction Rate: 95% Standard Dry Density, carried out in  
 accordance with Australian Standard AS 3798 - 2007 and Ipswich City  
 Council Planning Scheme Policy 3 - General Works, Part 4 - Earthworks.

Project:  
**WATERLEA  
 STAGE 3C**

Client:  
**WATERLEA  
 NOMINEES CO  
 PTY LTD**



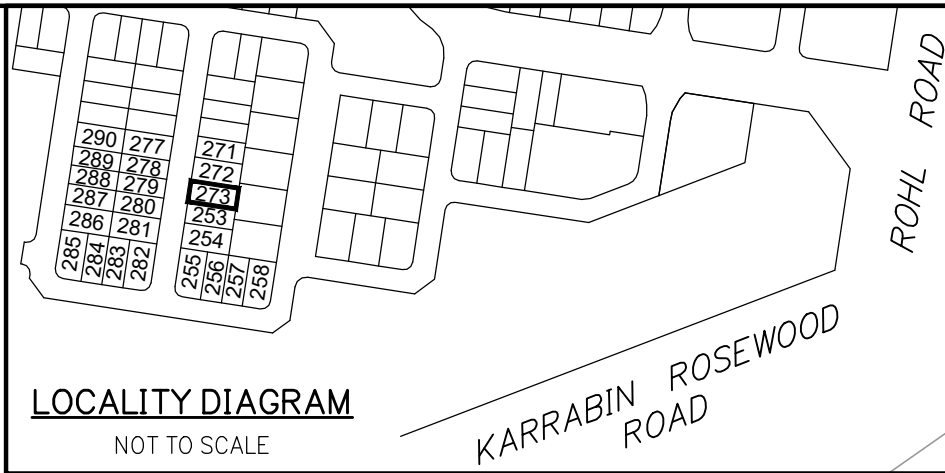
Western Corridor Office  
 Level 6, Springfield Tower  
 145 Sinnathamby Boulevard  
 Springfield Central QLD 4300  
 PO Box 4647  
 Springfield QLD 4300  
 t (07) 3470 8100  
 f (07) 3470 8101  
 e info@landpartners.com.au  
 w www.landpartners.com.au



SCALE 1:250

DRAWN	KT	DATUM	AHD D
DATE	24/09/2018	LEVEL ORIGIN	PSM193875 RL46.405
CHECKED	AW	COMPUTER FILE	WC007157-03C-2-1
DATE	25/09/2018	SCALE (@ A3)	1:250
APPROVED	REM	PLAN NUMBER	WC007157-03C-010-1
DATE	26/09/2018		





### DISCLOSURE PLAN FOR PROPOSED LOT 273

This plan shows:  
 Details of Proposed Lot 273 on the Reconfiguration Plan  
 Plan 0715-0430-13 D007, Rev 04 by Tract Consultants.  
 A Minor Change to a Reconfiguration of a lot application, being  
 application number 3105/2016/MAMC/B to reconfigure Lot 805  
 on SP297497 and Lot 1 on SP179238 at Walloon is currently  
 before Ipswich City Council for approval subject to conditions.

This Disclosure Plan was prepared in accordance with the Land Sales  
 Act 1984 to enable the sale of proposed lots. This plan should not be  
 used for design purposes as the details shown on this plan may vary  
 from final site conditions. Waterlea Nominees Co Pty Ltd recommends  
 using As Constructed information for design purposes.

Existing surface details shown hereon were supplied  
 by Premise on 5th September 2018

- Design surface contours based on AHD D  
 datum at an interval on 0.25m, shown as: 63.25
- Where applicable, Easements are shown as:
- Where applicable areas to be filled are shown as:
- Where applicable areas to be cut are shown as:

Maximum Fill Depth: 2.1 m  
 Fill Compaction Rate: 95% Standard Dry Density, carried out in  
 accordance with Australian Standard AS 3798 - 2007 and Ipswich City  
 Council Planning Scheme Policy 3 - General Works, Part 4 - Earthworks.

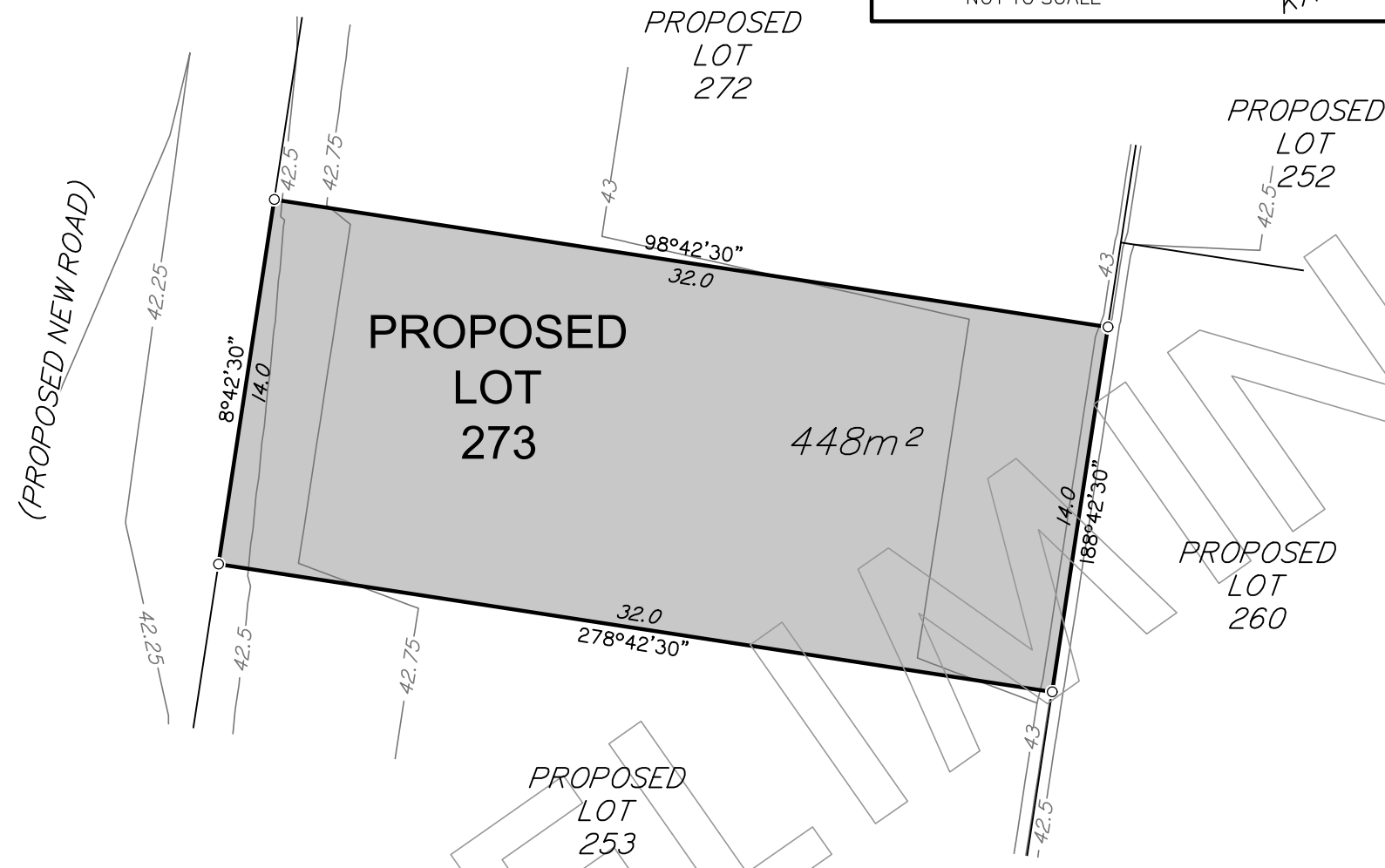
Project:	Client:
<b>WATERLEA STAGE 3C</b>	<b>WATERLEA NOMINEES CO PTY LTD</b>



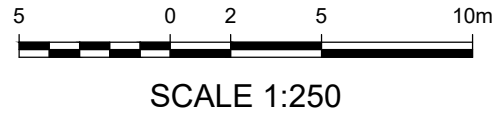
Western Corridor Office  
 Level 6, Springfield Tower  
 145 Sinnathamby Boulevard  
 Springfield Central QLD 4300  
 PO Box 4647  
 Springfield QLD 4300

**LANDPARTNERS**  
 built environment consultants

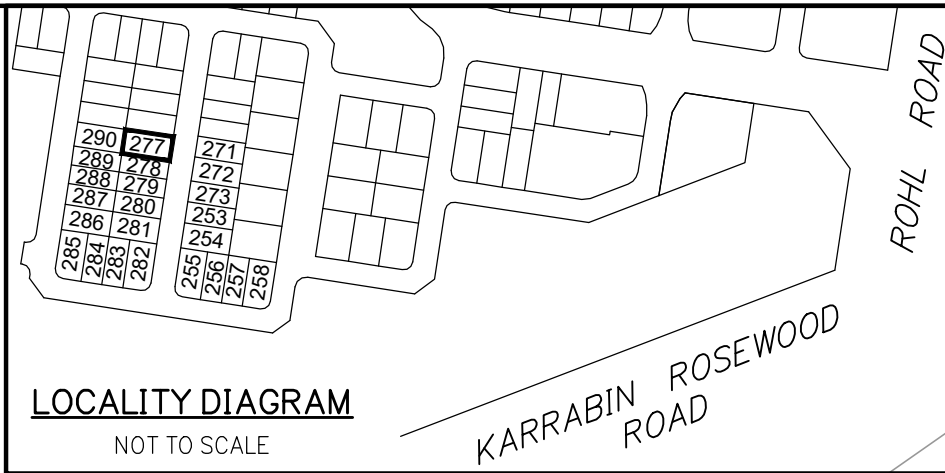
t (07) 3470 8100  
 f (07) 3470 8101  
 e info@landpartners.com.au  
 w www.landpartners.com.au



PRELIMINARY



DRAWN	KT	DATUM	AHD D
DATE	24/09/2018	LEVEL ORIGIN	PSM193875 RL46.405
CHECKED	AW	COMPUTER FILE	WC007157-03C-2-1
DATE	25/09/2018	SCALE (@ A3)	1:250
APPROVED	REM	PLAN NUMBER	<b>WC007157-03C-011-1</b>
DATE	26/09/2018		



**DISCLOSURE PLAN FOR PROPOSED LOT 277**

This plan shows:  
 Details of Proposed Lot 277 on the Reconfiguration Plan  
 Plan 0715-0430-13 D007, Rev 04 by Tract Consultants.  
 A Minor Change to a Reconfiguration of a lot application, being  
 application number 3105/2016/MAMC/B to reconfigure Lot 805  
 on SP297497 and Lot 1 on SP179238 at Walloon is currently  
 before Ipswich City Council for approval subject to conditions.

This Disclosure Plan was prepared in accordance with the Land Sales  
 Act 1984 to enable the sale of proposed lots. This plan should not be  
 used for design purposes as the details shown on this plan may vary  
 from final site conditions. Waterlea Nominees Co Pty Ltd recommends  
 using As Constructed information for design purposes.

Existing surface details shown hereon were supplied  
 by Premise on 5th September 2018

- Design surface contours based on AHD D  
 datum at an interval on 0.25m, shown as: 63.25
- Where applicable, Easements are shown as:
- Where applicable areas to be filled are shown as:
- Where applicable areas to be cut are shown as:

Maximum Fill Depth: 1.7 m  
 Fill Compaction Rate: 95% Standard Dry Density, carried out in  
 accordance with Australian Standard AS 3798 - 2007 and Ipswich City  
 Council Planning Scheme Policy 3 - General Works, Part 4 - Earthworks.

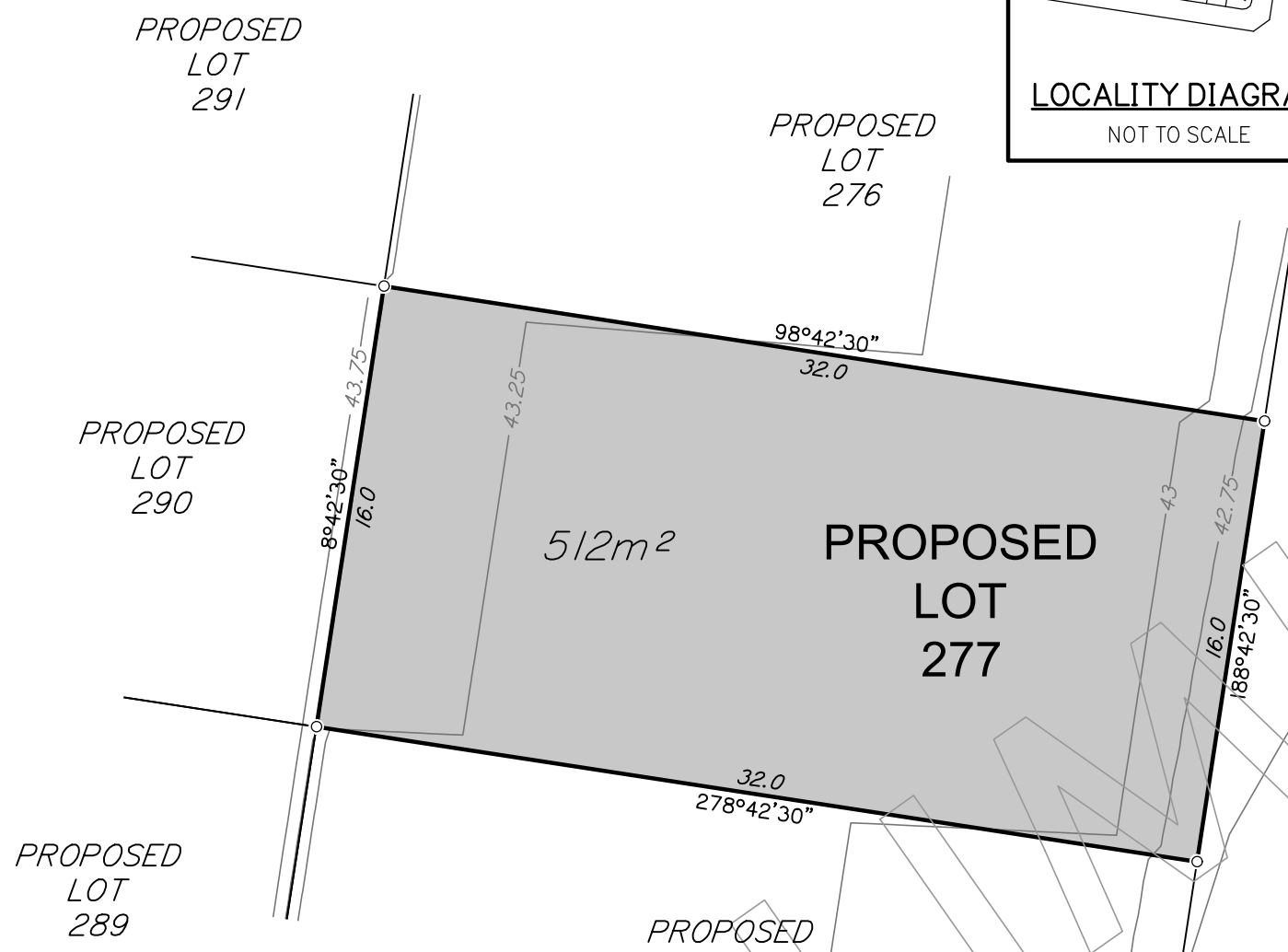
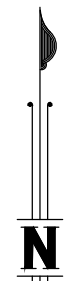
Project:	Client:
<b>WATERLEA STAGE 3C</b>	<b>WATERLEA NOMINEES CO PTY LTD</b>



Western Corridor Office  
 Level 6, Springfield Tower  
 145 Sinnathamby Boulevard  
 Springfield Central QLD 4300  
 PO Box 4647  
 Springfield QLD 4300

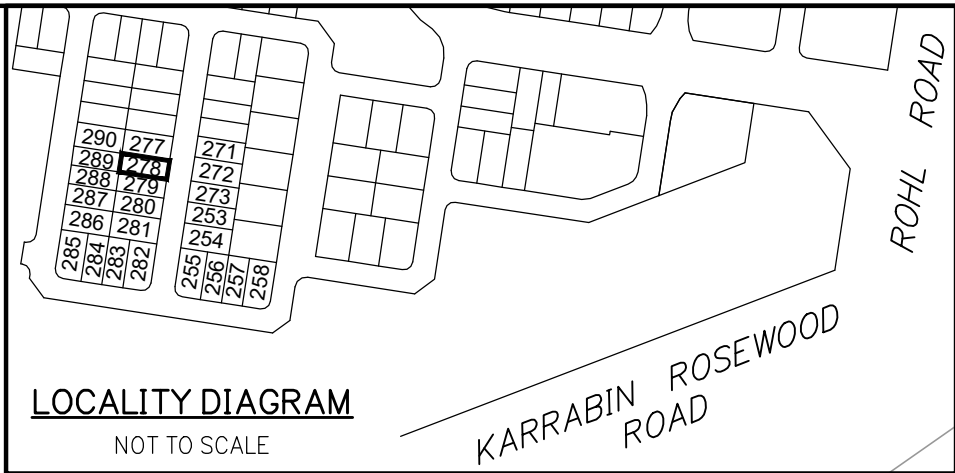
t (07) 3470 8100  
 f (07) 3470 8101  
 e info@landpartners.com.au  
 w www.landpartners.com.au

DRAWN	KT	DATUM	AHD D
DATE	24/09/2018	LEVEL ORIGIN	PSM193875 RL46.405
CHECKED	AW	COMPUTER FILE	WC007157-03C-2-1
DATE	25/09/2018	SCALE (@ A3)	1:250
APPROVED	REM	PLAN NUMBER	<b>WC007157-03C-012-1</b>
DATE	26/09/2018		



SCALE 1:250

PRELIMINARY



**DISCLOSURE PLAN FOR PROPOSED LOT 278**

This plan shows:  
 Details of Proposed Lot 278 on the Reconfiguration Plan Plan 0715-0430-13 D007, Rev 04 by Tract Consultants.  
 A Minor Change to a Reconfiguration of a lot application, being application number 3105/2016/MAMC/B to reconfigure Lot 805 on SP297497 and Lot 1 on SP179238 at Walloon is currently before Ipswich City Council for approval subject to conditions.

This Disclosure Plan was prepared in accordance with the Land Sales Act 1984 to enable the sale of proposed lots. This plan should not be used for design purposes as the details shown on this plan may vary from final site conditions. Waterlea Nominees Co Pty Ltd recommends using As Constructed information for design purposes.

Existing surface details shown hereon were supplied by Premise on 5th September 2018

- Design surface contours based on AHD D datum at an interval on 0.25m, shown as:  63.25
- Where applicable, Easements are shown as:
- Where applicable areas to be filled are shown as:
- Where applicable areas to be cut are shown as: + + +

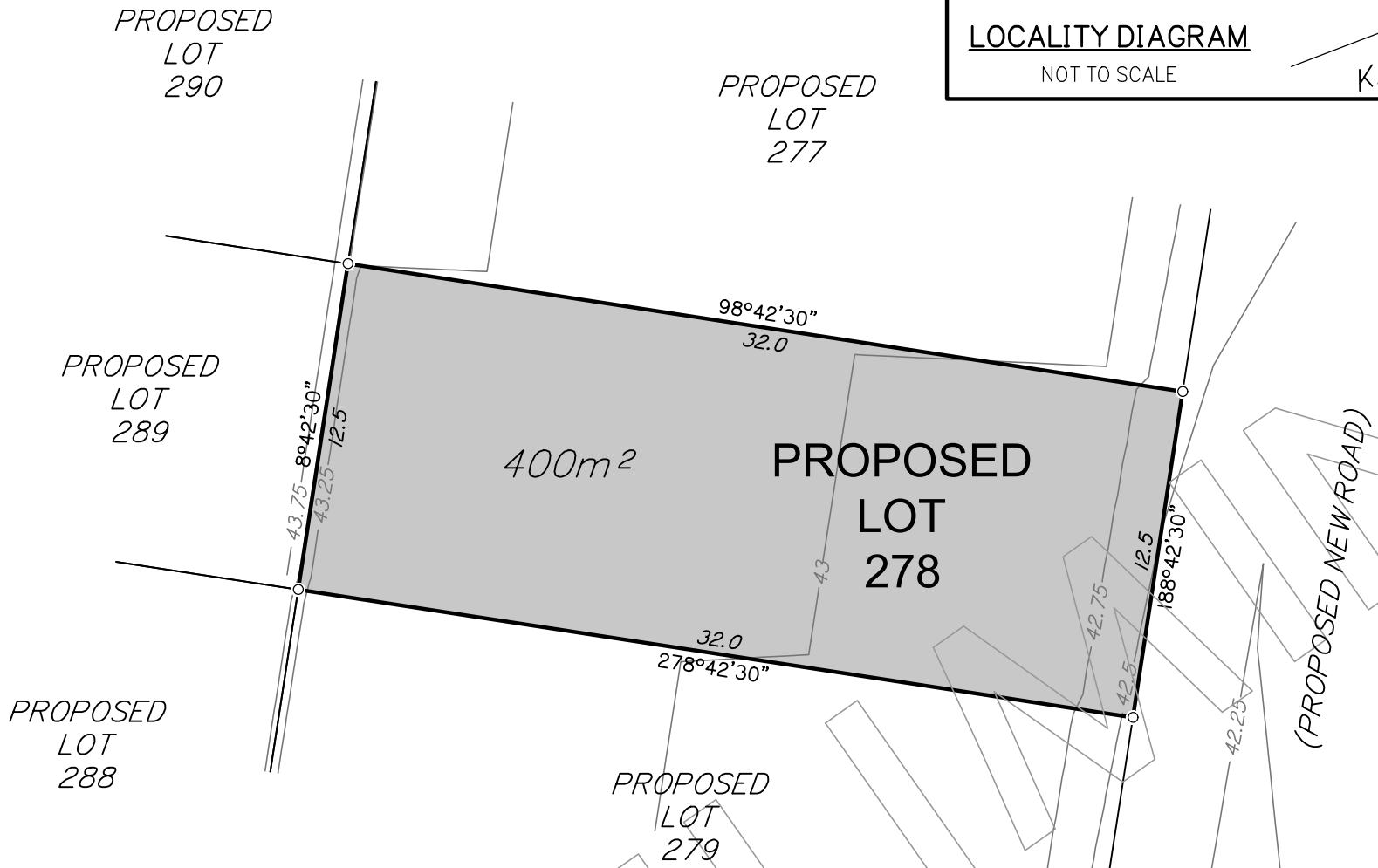
Maximum Fill Depth: 1.7 m  
 Fill Compaction Rate: 95% Standard Dry Density, carried out in accordance with Australian Standard AS 3798 – 2007 and Ipswich City Council Planning Scheme Policy 3 – General Works, Part 4 – Earthworks.

Project: <b>WATERLEA STAGE 3C</b>	Client: <b>WATERLEA NOMINEES CO PTY LTD</b>
--------------------------------------	--

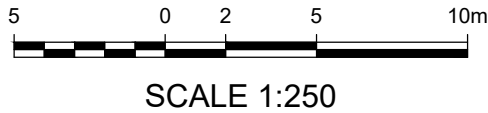


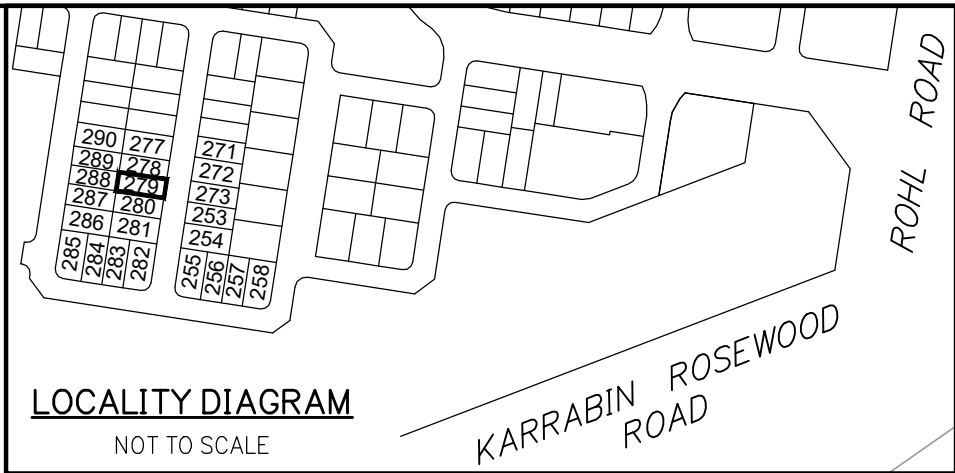
Western Corridor Office  
 Level 6, Springfield Tower  
 145 Sinnathamby Boulevard  
 Springfield Central QLD 4300  
 PO Box 4647  
 Springfield QLD 4300  
 t (07) 3470 8100  
 f (07) 3470 8101  
 e info@landpartners.com.au  
 www.landpartners.com.au

DRAWN	KT	DATUM	AHD D
DATE	24/09/2018	LEVEL ORIGIN	PSM193875 RL46.405
CHECKED	AW	COMPUTER FILE	WC007157-03C-2-1
DATE	25/09/2018	SCALE (@ A3)	1:250
APPROVED	REM	PLAN NUMBER	WC007157-03C-013-1
DATE	26/09/2018		



PRELIMINARY





**DISCLOSURE PLAN FOR PROPOSED LOT 279**

This plan shows:  
 Details of Proposed Lot 279 on the Reconfiguration Plan  
 Plan 0715-0430-13 D007, Rev 04 by Tract Consultants.  
 A Minor Change to a Reconfiguration of a lot application, being  
 application number 3105/2016/MAMC/B to reconfigure Lot 805  
 on SP297497 and Lot 1 on SP179238 at Walloon is currently  
 before Ipswich City Council for approval subject to conditions.

This Disclosure Plan was prepared in accordance with the Land Sales  
 Act 1984 to enable the sale of proposed lots. This plan should not be  
 used for design purposes as the details shown on this plan may vary  
 from final site conditions. Waterlea Nominees Co Pty Ltd recommends  
 using As Constructed information for design purposes.

Existing surface details shown hereon were supplied  
 by Premise on 5th September 2018

- Design surface contours based on AHD D datum at an interval on 0.25m, shown as: 63.25
- Where applicable, Easements are shown as:
- Where applicable areas to be filled are shown as:
- Where applicable areas to be cut are shown as:

Maximum Fill Depth: 1.6 m  
 Fill Compaction Rate: 95% Standard Dry Density, carried out in  
 accordance with Australian Standard AS 3798 – 2007 and Ipswich City  
 Council Planning Scheme Policy 3 – General Works, Part 4 – Earthworks.

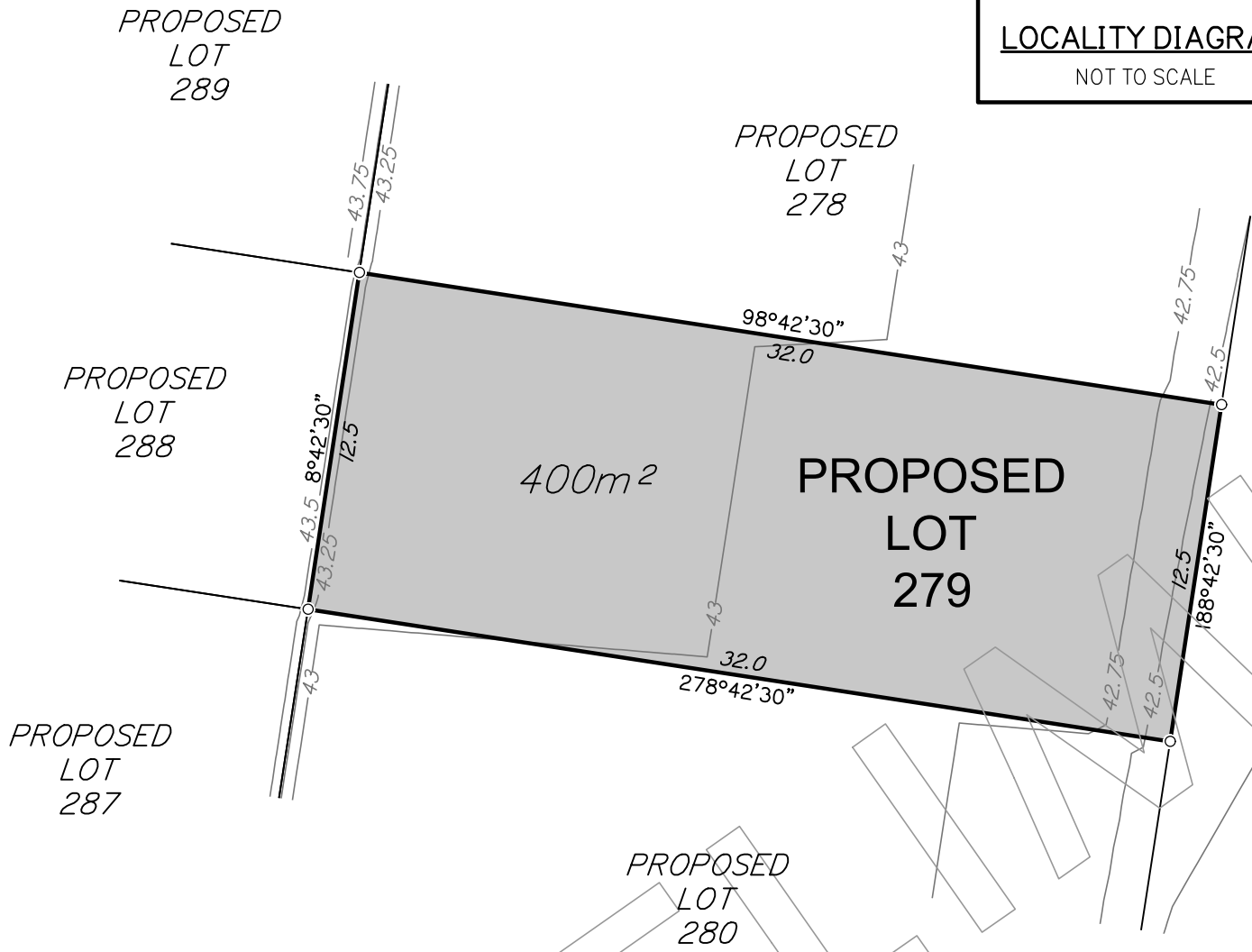
Project:	Client:
<b>WATERLEA STAGE 3C</b>	<b>WATERLEA NOMINEES CO PTY LTD</b>



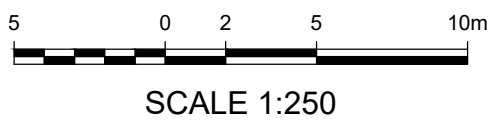
Western Corridor Office  
 Level 6, Springfield Tower  
 145 Sinnathamby Boulevard  
 Springfield Central QLD 4300  
 PO Box 4647  
 Springfield QLD 4300

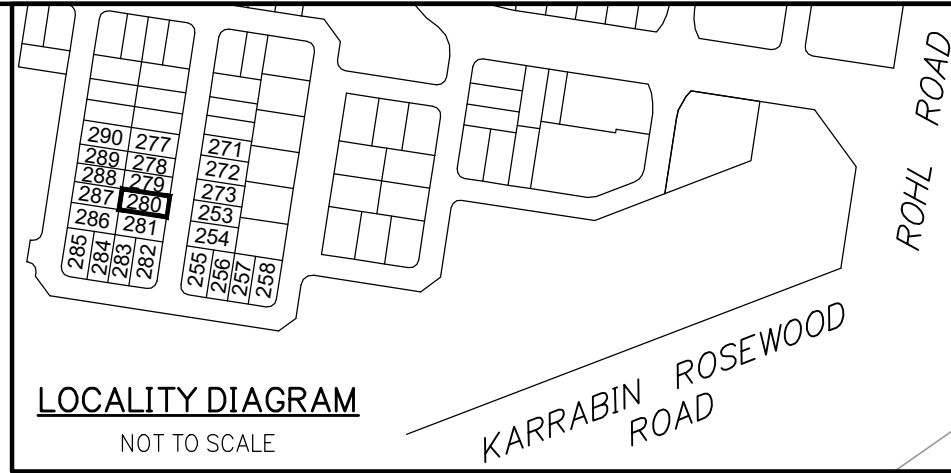
t (07) 3470 8100  
 f (07) 3470 8101  
 e info@landpartners.com.au  
 www.landpartners.com.au

DRAWN	KT	DATUM	AHD D
DATE	24/09/2018	LEVEL ORIGIN	PSM193875 RL46.405
CHECKED	AW	COMPUTER FILE	WC007157-03C-2-1
DATE	25/09/2018	SCALE (@ A3)	1:250
APPROVED	REM	PLAN NUMBER	<b>WC007157-03C-014-1</b>
DATE	26/09/2018		



PRELIMINARY





**DISCLOSURE PLAN FOR PROPOSED LOT 280**

This plan shows:  
Details of Proposed Lot 280 on the Reconfiguration Plan Plan 0715-0430-13 D007, Rev 04 by Tract Consultants.  
A Minor Change to a Reconfiguration of a lot application, being application number 3105/2016/MAMC/B to reconfigure Lot 805 on SP297497 and Lot 1 on SP179238 at Walloon is currently before Ipswich City Council for approval subject to conditions.

This Disclosure Plan was prepared in accordance with the Land Sales Act 1984 to enable the sale of proposed lots. This plan should not be used for design purposes as the details shown on this plan may vary from final site conditions. Waterlea Nominees Co Pty Ltd recommends using As Constructed information for design purposes.

Existing surface details shown hereon were supplied by Premise on 5th September 2018

- Design surface contours based on AHD D datum at an interval on 0.25m, shown as: 63.25
- Where applicable, Easements are shown as:
- Where applicable areas to be filled are shown as:
- Where applicable areas to be cut are shown as:

Maximum Fill Depth: 1.6 m

Fill Compaction Rate: 95% Standard Dry Density, carried out in accordance with Australian Standard AS 3798 - 2007 and Ipswich City Council Planning Scheme Policy 3 - General Works, Part 4 - Earthworks.

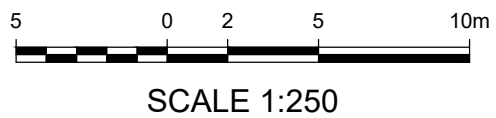
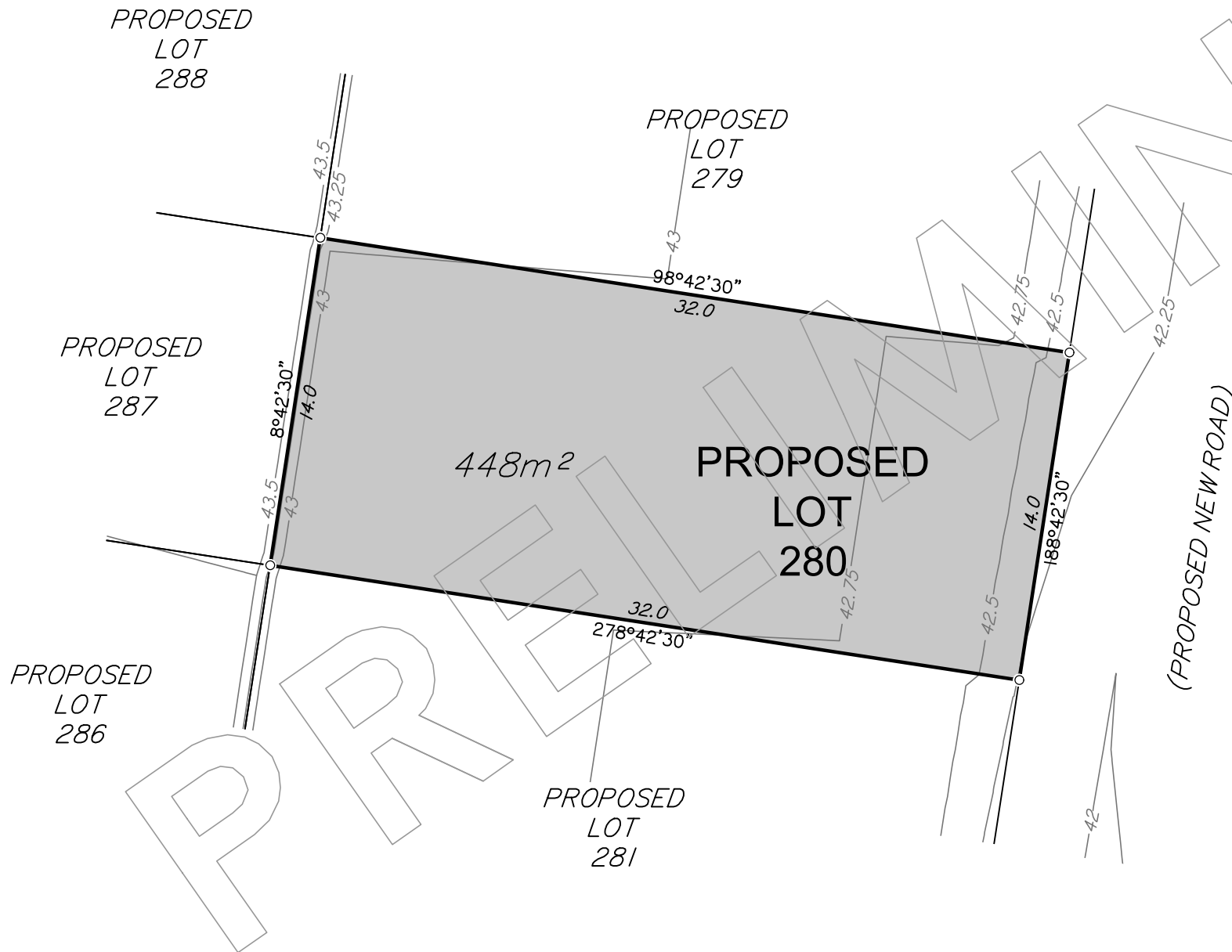
Project:	Client:
<b>WATERLEA STAGE 3C</b>	<b>WATERLEA NOMINEES CO PTY LTD</b>



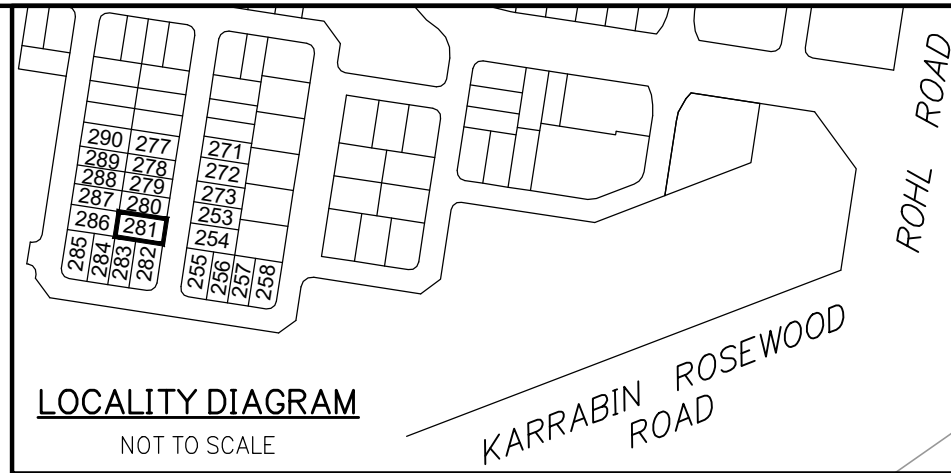
Western Corridor Office  
Level 6, Springfield Tower  
145 Sinnathamby Boulevard  
Springfield Central QLD 4300  
PO Box 4647  
Springfield QLD 4300

**LANDPARTNERS**  
built environment consultants

t (07) 3470 8100  
f (07) 3470 8101  
e info@landpartners.com.au  
w www.landpartners.com.au



DRAWN	KT	DATUM	AHD D
DATE	24/09/2018	LEVEL ORIGIN	PSM193875 RL46.405
CHECKED	AW	COMPUTER FILE	WC007157-03C-2-1
DATE	25/09/2018	SCALE (@ A3)	1:250
APPROVED	REM	PLAN NUMBER	<b>WC007157-03C-015-1</b>
DATE	26/09/2018		



### DISCLOSURE PLAN FOR PROPOSED LOT 281

This plan shows:  
 Details of Proposed Lot 281 on the Reconfiguration Plan  
 Plan 0715-0430-13 D007, Rev 04 by Tract Consultants.

A Minor Change to a Reconfiguration of a lot application, being  
 application number 3105/2016/MAMC/B to reconfigure Lot 805  
 on SP297497 and Lot 1 on SP179238 at Walloon is currently  
 before Ipswich City Council for approval subject to conditions.

This Disclosure Plan was prepared in accordance with the Land Sales  
 Act 1984 to enable the sale of proposed lots. This plan should not be  
 used for design purposes as the details shown on this plan may vary  
 from final site conditions. Waterlea Nominees Co Pty Ltd recommends  
 using As Constructed information for design purposes.

Existing surface details shown hereon were supplied  
 by Premise on 5th September 2018

- Design surface contours based on AHD D  
 datum at an interval on 0.25m, shown as: 63.25
- Where applicable, Easements are shown as:
- Where applicable areas to be filled are shown as:
- Where applicable areas to be cut are shown as:

Maximum Fill Depth: 1.6 m  
 Fill Compaction Rate: 95% Standard Dry Density, carried out in  
 accordance with Australian Standard AS 3798 - 2007 and Ipswich City  
 Council Planning Scheme Policy 3 - General Works, Part 4 - Earthworks.

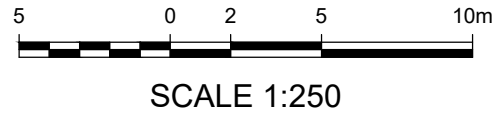
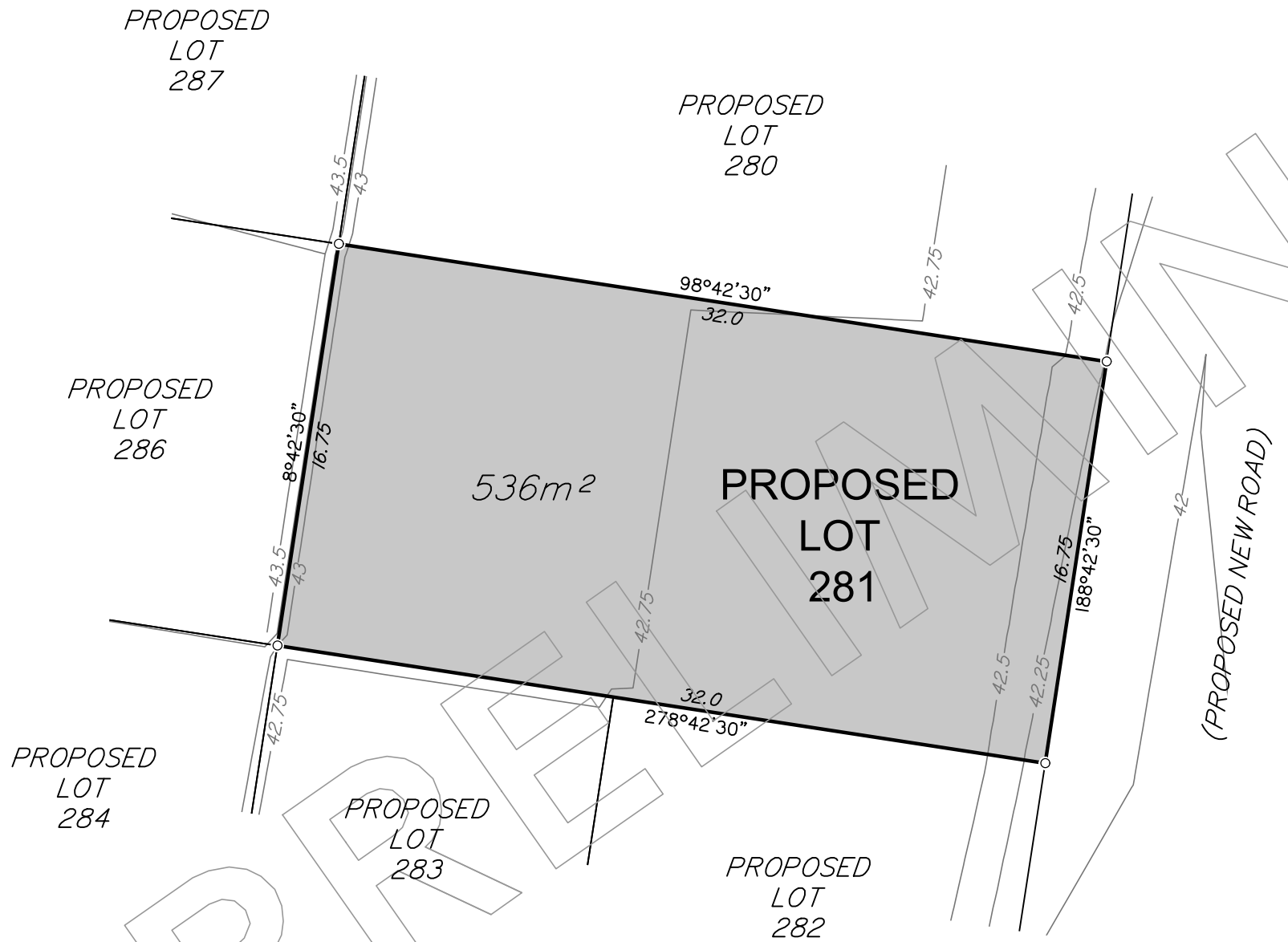
Project:	Client:
<b>WATERLEA STAGE 3C</b>	<b>WATERLEA NOMINEES CO PTY LTD</b>



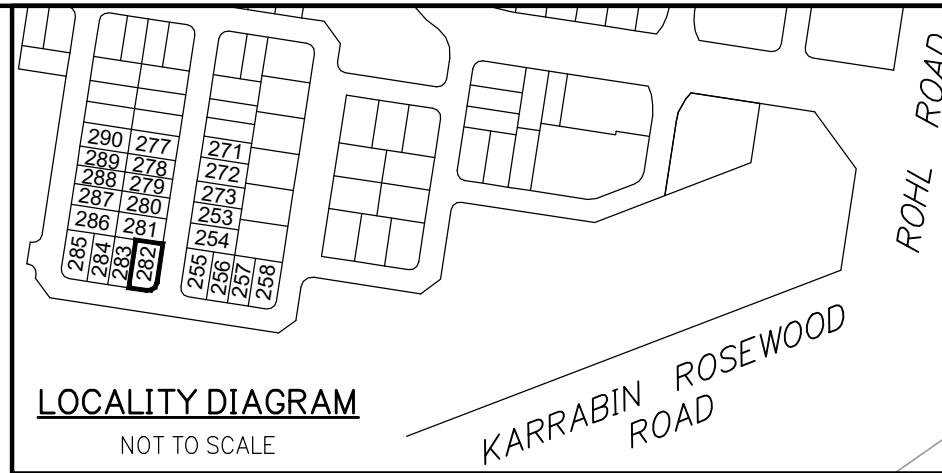
**LANDPARTNERS**  
 built environment consultants

Western Corridor Office  
 Level 6, Springfield Tower  
 145 Sinnathamby Boulevard  
 Springfield Central QLD 4300  
 PO Box 4647  
 Springfield QLD 4300

t (07) 3470 8100  
 f (07) 3470 8101  
 e info@landpartners.com.au  
 www.landpartners.com.au



DRAWN	KT	DATUM	AHD D
DATE	24/09/2018	LEVEL ORIGIN	PSM193875 RL46.405
CHECKED	AW	COMPUTER FILE	WC007157-03C-2-1
DATE	25/09/2018	SCALE (@ A3)	1:250
APPROVED	REM	PLAN NUMBER	<b>WC007157-03C-016-1</b>
DATE	26/09/2018		



## DISCLOSURE PLAN FOR PROPOSED LOT 282

This plan shows:  
 Details of Proposed Lot 282 on the Reconfiguration Plan  
 Plan 0715-0430-13 D007, Rev 04 by Tract Consultants.  
 A Minor Change to a Reconfiguration of a lot application, being  
 application number 3105/2016/MAMC/B to reconfigure Lot 805  
 on SP297497 and Lot 1 on SP179238 at Walloon is currently  
 before Ipswich City Council for approval subject to conditions.

This Disclosure Plan was prepared in accordance with the Land Sales  
 Act 1984 to enable the sale of proposed lots. This plan should not be  
 used for design purposes as the details shown on this plan may vary  
 from final site conditions. Waterlea Nominees Co Pty Ltd recommends  
 using As Constructed information for design purposes.

Existing surface details shown hereon were supplied  
 by Premise on 5th September 2018

Design surface contours based on AHD D  
 datum at an interval on 0.25m, shown as:  63.25

Where applicable, Easements are shown as:

Where applicable areas to be filled are shown as:

Where applicable areas to be cut are shown as: + + +

Maximum Fill Depth: 1.5 m

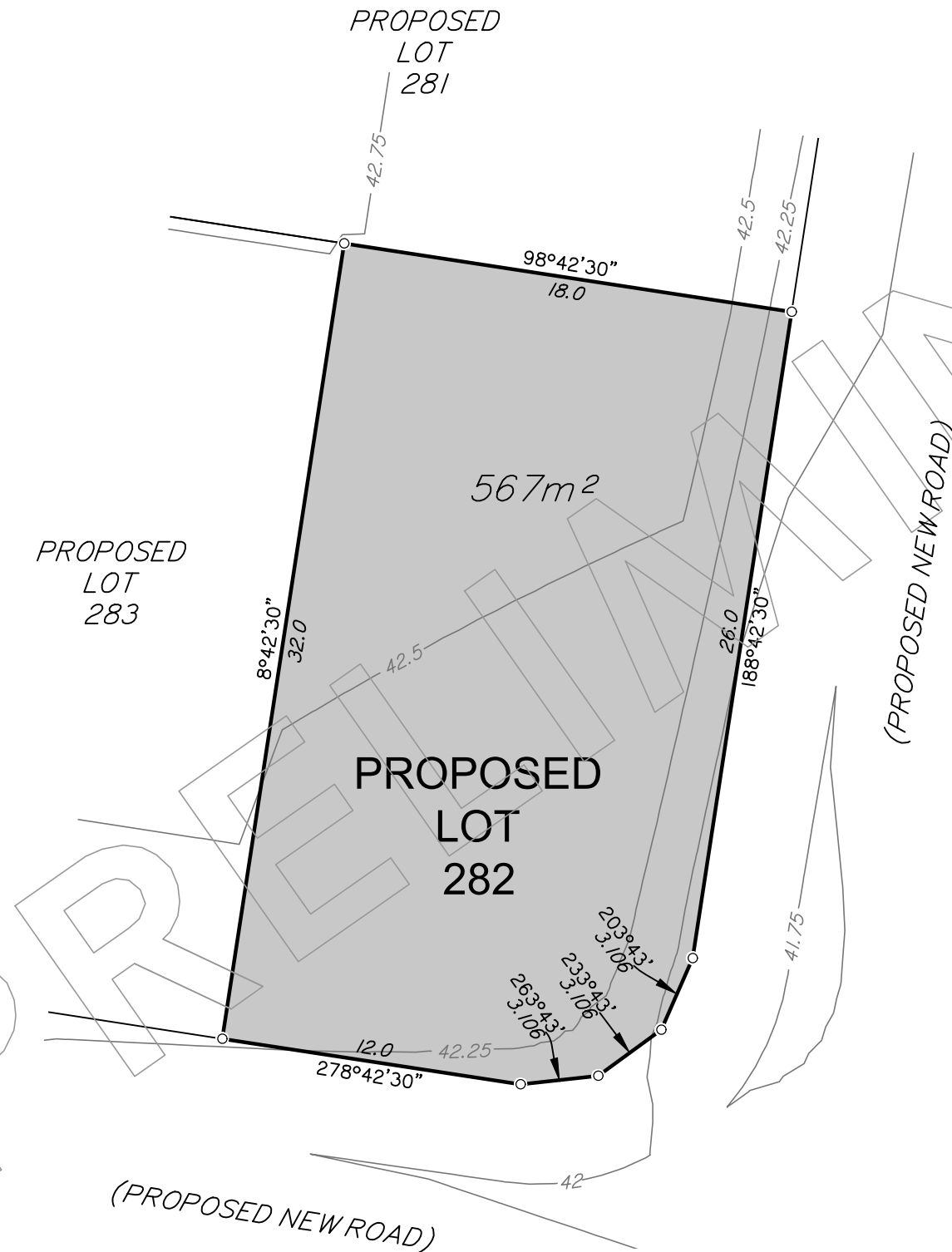
Fill Compaction Rate: 95% Standard Dry Density, carried out in  
 accordance with Australian Standard AS 3798 - 2007 and Ipswich City  
 Council Planning Scheme Policy 3 - General Works, Part 4 - Earthworks.

Project:  
**WATERLEA  
 STAGE 3C**

Client:  
**WATERLEA  
 NOMINEES CO  
 PTY LTD**

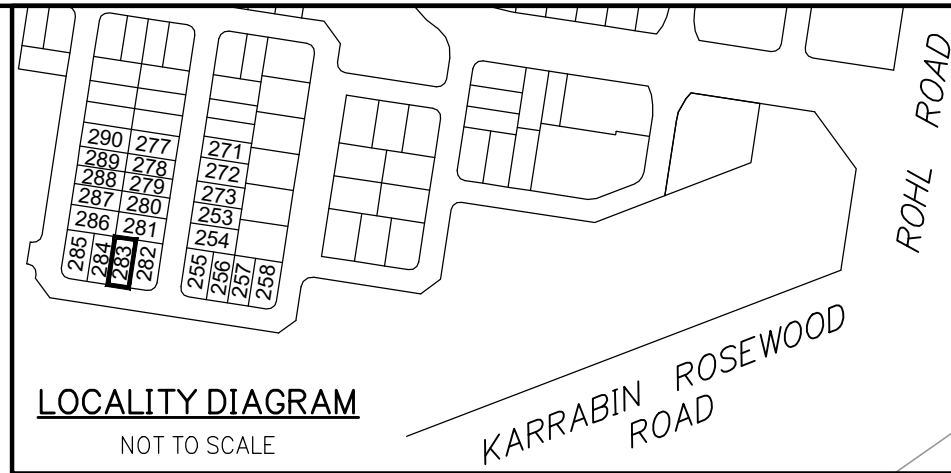


Western Corridor Office  
 Level 6, Springfield Tower  
 145 Sinnathamby Boulevard  
 Springfield Central QLD 4300  
 PO Box 4647  
 Springfield QLD 4300  
 t (07) 3470 8100  
 f (07) 3470 8101  
 e info@landpartners.com.au  
 w www.landpartners.com.au



SCALE 1:250

DRAWN	KT	DATUM	AHD D
DATE	24/09/2018	LEVEL ORIGIN	PSM193875 RL46.405
CHECKED	AW	COMPUTER FILE	WC007157-03C-2-1
DATE	25/09/2018	SCALE (@ A3)	1:250
APPROVED	REM	PLAN NUMBER	WC007157-03C-017-1
DATE	26/09/2018		



**DISCLOSURE PLAN FOR PROPOSED LOT 283**

This plan shows:  
 Details of Proposed Lot 283 on the Reconfiguration Plan  
 Plan 0715-0430-13 D007, Rev 04 by Tract Consultants.  
 A Minor Change to a Reconfiguration of a lot application, being  
 application number 3105/2016/MAMC/B to reconfigure Lot 805  
 on SP297497 and Lot 1 on SP179238 at Walloon is currently  
 before Ipswich City Council for approval subject to conditions.

This Disclosure Plan was prepared in accordance with the Land Sales  
 Act 1984 to enable the sale of proposed lots. This plan should not be  
 used for design purposes as the details shown on this plan may vary  
 from final site conditions. Waterlea Nominees Co Pty Ltd recommends  
 using As Constructed information for design purposes.

Existing surface details shown hereon were supplied  
 by Premise on 5th September 2018

- Design surface contours based on AHD D  
 datum at an interval on 0.25m, shown as: 63.25
- Where applicable, Easements are shown as:
- Where applicable areas to be filled are shown as:
- Where applicable areas to be cut are shown as:

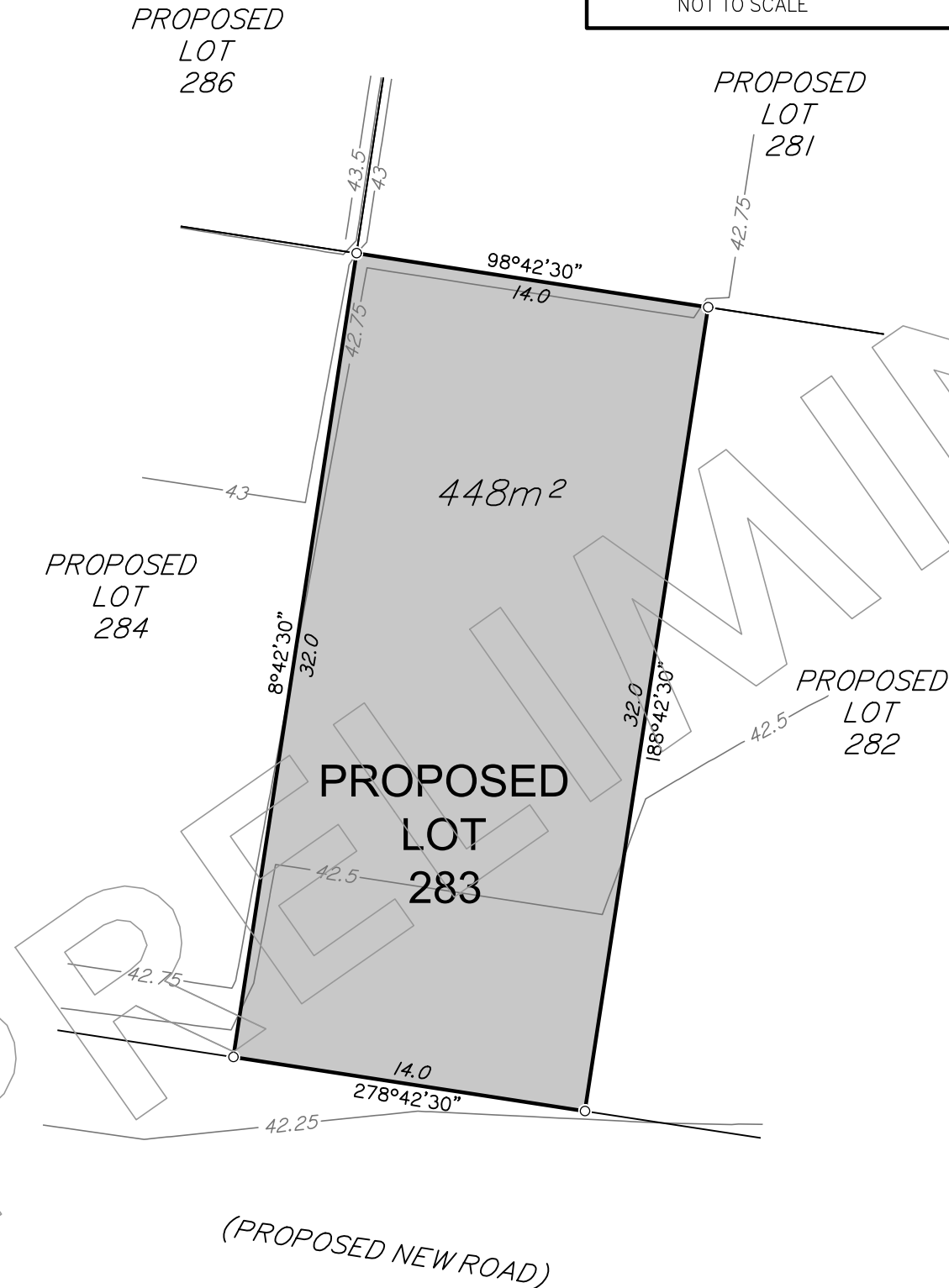
Maximum Fill Depth: 1.4 m  
 Fill Compaction Rate: 95% Standard Dry Density, carried out in  
 accordance with Australian Standard AS 3798 - 2007 and Ipswich City  
 Council Planning Scheme Policy 3 - General Works, Part 4 - Earthworks.

Project:	Client:
<b>WATERLEA STAGE 3C</b>	<b>WATERLEA NOMINEES CO PTY LTD</b>



Western Corridor Office  
 Level 6, Springfield Tower  
 145 Sinnathamby Boulevard  
 Springfield Central QLD 4300  
 PO Box 4647  
 Springfield QLD 4300

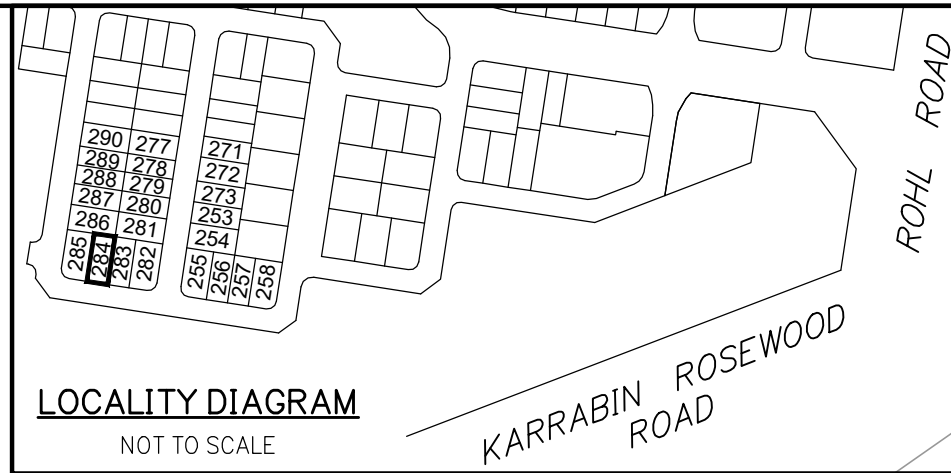
1 (07) 3470 8100  
 1 (07) 3470 8101  
 e info@landpartners.com.au  
 w www.landpartners.com.au



SCALE 1:250

DRAWN	KT	DATUM	AHD D
DATE	24/09/2018	LEVEL ORIGIN	PSM193875 RL46.405
CHECKED	AW	COMPUTER FILE	WC007157-03C-2-1
DATE	25/09/2018	SCALE (@ A3)	1:250
APPROVED	REM	PLAN NUMBER	<b>WC007157-03C-018-1</b>
DATE	26/09/2018		





### DISCLOSURE PLAN FOR PROPOSED LOT 284

This plan shows:  
 Details of Proposed Lot 284 on the Reconfiguration Plan  
 Plan 0715-0430-13 D007, Rev 04 by Tract Consultants.  
 A Minor Change to a Reconfiguration of a lot application, being  
 application number 3105/2016/MAMC/B to reconfigure Lot 805  
 on SP297497 and Lot 1 on SP179238 at Walloon is currently  
 before Ipswich City Council for approval subject to conditions.

This Disclosure Plan was prepared in accordance with the Land Sales  
 Act 1984 to enable the sale of proposed lots. This plan should not be  
 used for design purposes as the details shown on this plan may vary  
 from final site conditions. Waterlea Nominees Co Pty Ltd recommends  
 using As Constructed information for design purposes.

Existing surface details shown hereon were supplied  
 by Premise on 5th September 2018

- Design surface contours based on AHD D  
 datum at an interval on 0.25m, shown as: 63.25
- Where applicable, Easements are shown as:
- Where applicable areas to be filled are shown as:
- Where applicable areas to be cut are shown as:

Maximum Fill Depth: 1.7 m

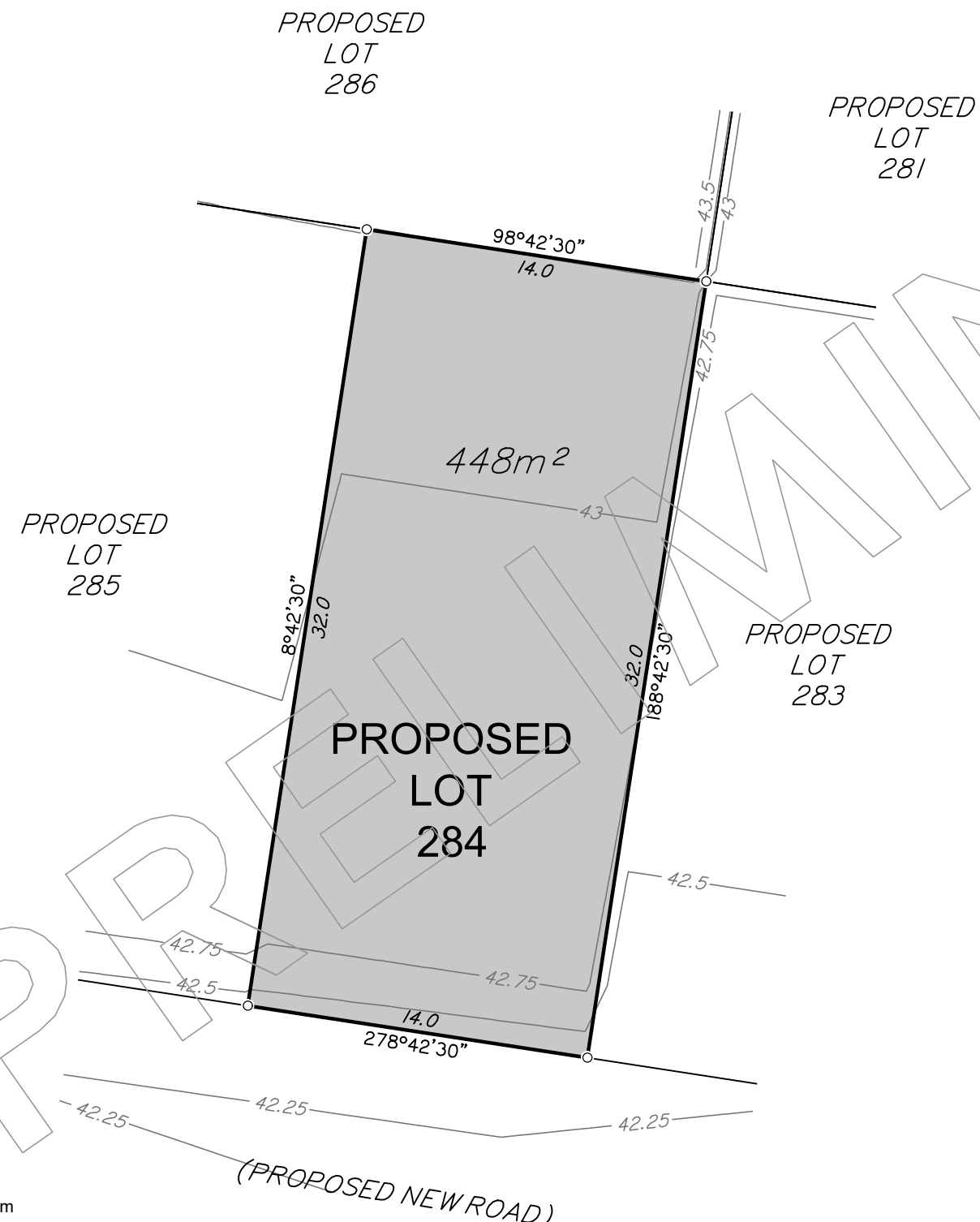
Fill Compaction Rate: 95% Standard Dry Density, carried out in  
 accordance with Australian Standard AS 3798 - 2007 and Ipswich City  
 Council Planning Scheme Policy 3 - General Works, Part 4 - Earthworks.

Project:  
**WATERLEA  
 STAGE 3C**

Client:  
**WATERLEA  
 NOMINEES CO  
 PTY LTD**

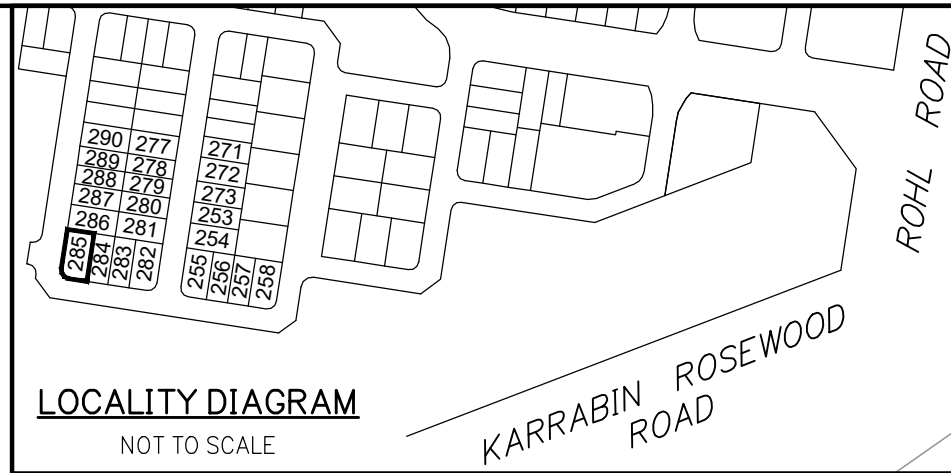


Western Corridor Office  
 Level 6, Springfield Tower  
 145 Sinnathamby Boulevard  
 Springfield Central QLD 4300  
 PO Box 4647  
 Springfield QLD 4300  
 t (07) 3470 8100  
 f (07) 3470 8101  
 e info@landpartners.com.au  
 www.landpartners.com.au



SCALE 1:250

DRAWN	KT	DATUM	AHD D
DATE	24/09/2018	LEVEL ORIGIN	PSM193875 RL46.405
CHECKED	AW	COMPUTER FILE	WC007157-03C-2-1
DATE	25/09/2018	SCALE (@ A3)	1:250
APPROVED	REM	PLAN NUMBER	WC007157-03C-019-1
DATE	26/09/2018		



### DISCLOSURE PLAN FOR PROPOSED LOT 285

This plan shows:  
 Details of Proposed Lot 285 on the Reconfiguration Plan  
 Plan 0715-0430-13 D007, Rev 04 by Tract Consultants.  
 A Minor Change to a Reconfiguration of a lot application, being  
 application number 3105/2016/MAMC/B to reconfigure Lot 805  
 on SP297497 and Lot 1 on SP179238 at Walloon is currently  
 before Ipswich City Council for approval subject to conditions.

This Disclosure Plan was prepared in accordance with the Land Sales  
 Act 1984 to enable the sale of proposed lots. This plan should not be  
 used for design purposes as the details shown on this plan may vary  
 from final site conditions. Waterlea Nominees Co Pty Ltd recommends  
 using As Constructed information for design purposes.

Existing surface details shown hereon were supplied  
 by Premise on 5th September 2018

- Design surface contours based on AHD D  
 datum at an interval on 0.25m, shown as: 63.25
- Where applicable, Easements are shown as:
- Where applicable areas to be filled are shown as:
- Where applicable areas to be cut are shown as:

Maximum Fill Depth: 1.6 m

Fill Compaction Rate: 95% Standard Dry Density, carried out in  
 accordance with Australian Standard AS 3798 - 2007 and Ipswich City  
 Council Planning Scheme Policy 3 - General Works, Part 4 - Earthworks.

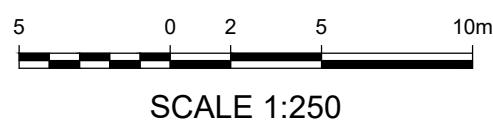
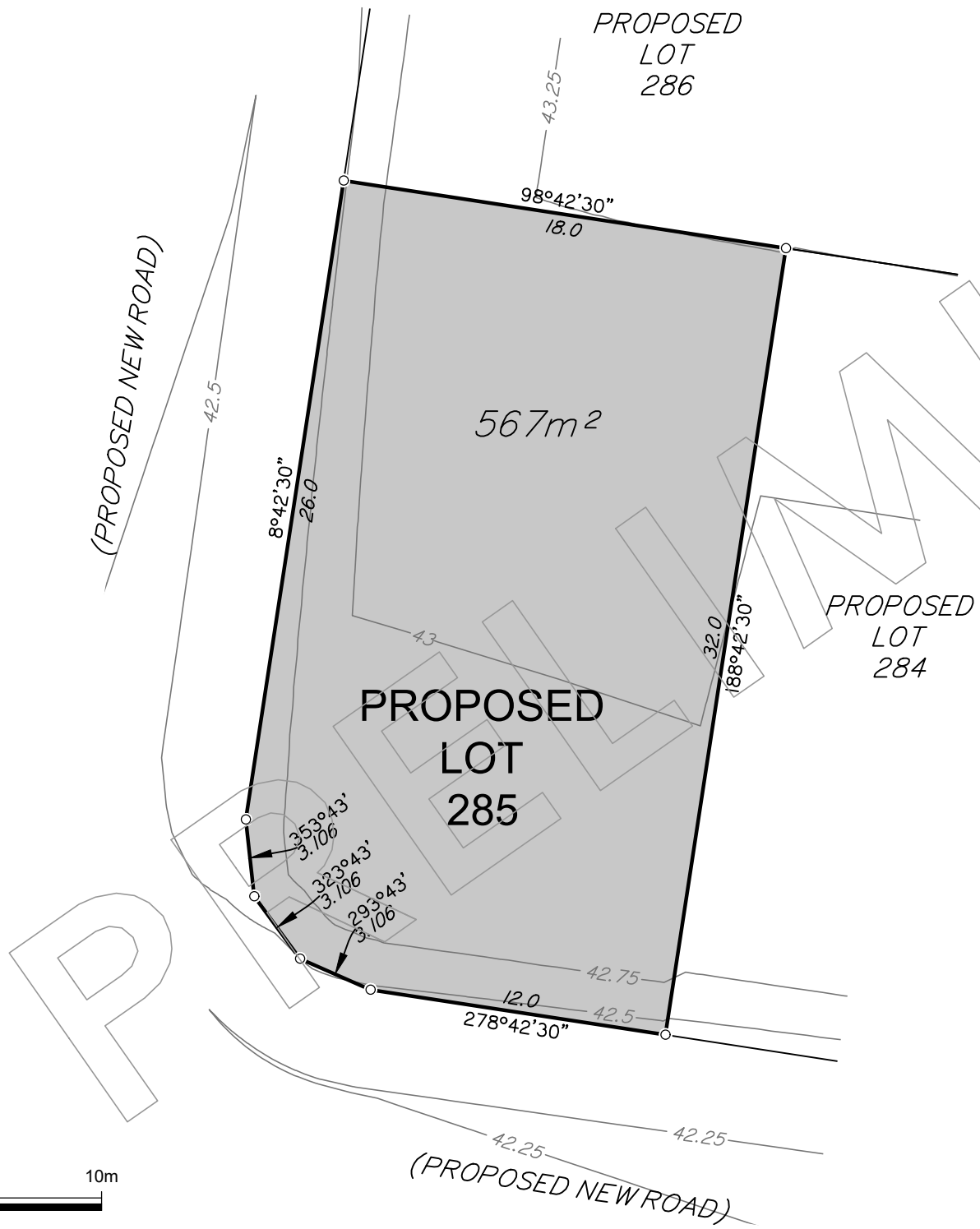
Project:  
**WATERLEA  
 STAGE 3C**

Client:  
**WATERLEA  
 NOMINEES CO  
 PTY LTD**

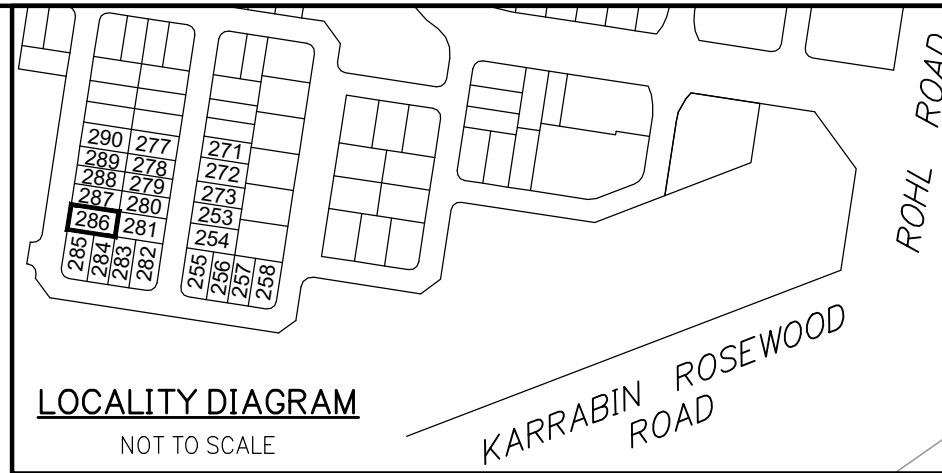
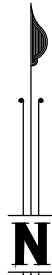


Western Corridor Office  
 Level 6, Springfield Tower  
 145 Sinnathamby Boulevard  
 Springfield Central QLD 4300  
 PO Box 4647  
 Springfield QLD 4300

1 (07) 3470 8100  
 1 (07) 3470 8101  
 e info@landpartners.com.au  
 www.landpartners.com.au



DRAWN	KT	DATUM	AHD D
DATE	24/09/2018	LEVEL ORIGIN	PSM193875 RL46.405
CHECKED	AW	COMPUTER FILE	WC007157-03C-2-1
DATE	25/09/2018	SCALE (@ A3)	1:250
APPROVED	REM	PLAN NUMBER	WC007157-03C-020-1
DATE	26/09/2018		



### DISCLOSURE PLAN FOR PROPOSED LOT 286

This plan shows:  
 Details of Proposed Lot 286 on the Reconfiguration Plan  
 Plan 0715-0430-13 D007, Rev 04 by Tract Consultants.  
 A Minor Change to a Reconfiguration of a lot application, being  
 application number 3105/2016/MAMC/B to reconfigure Lot 805  
 on SP297497 and Lot 1 on SP179238 at Walloon is currently  
 before Ipswich City Council for approval subject to conditions.

This Disclosure Plan was prepared in accordance with the Land Sales  
 Act 1984 to enable the sale of proposed lots. This plan should not be  
 used for design purposes as the details shown on this plan may vary  
 from final site conditions. Waterlea Nominees Co Pty Ltd recommends  
 using As Constructed information for design purposes.

Existing surface details shown hereon were supplied  
 by Premise on 5th September 2018

Design surface contours based on AHD D  
 datum at an interval on 0.25m, shown as:  63.25

Where applicable, Easements are shown as:

Where applicable areas to be filled are shown as:

Where applicable areas to be cut are shown as: + + +

Maximum Fill Depth: 1.9 m

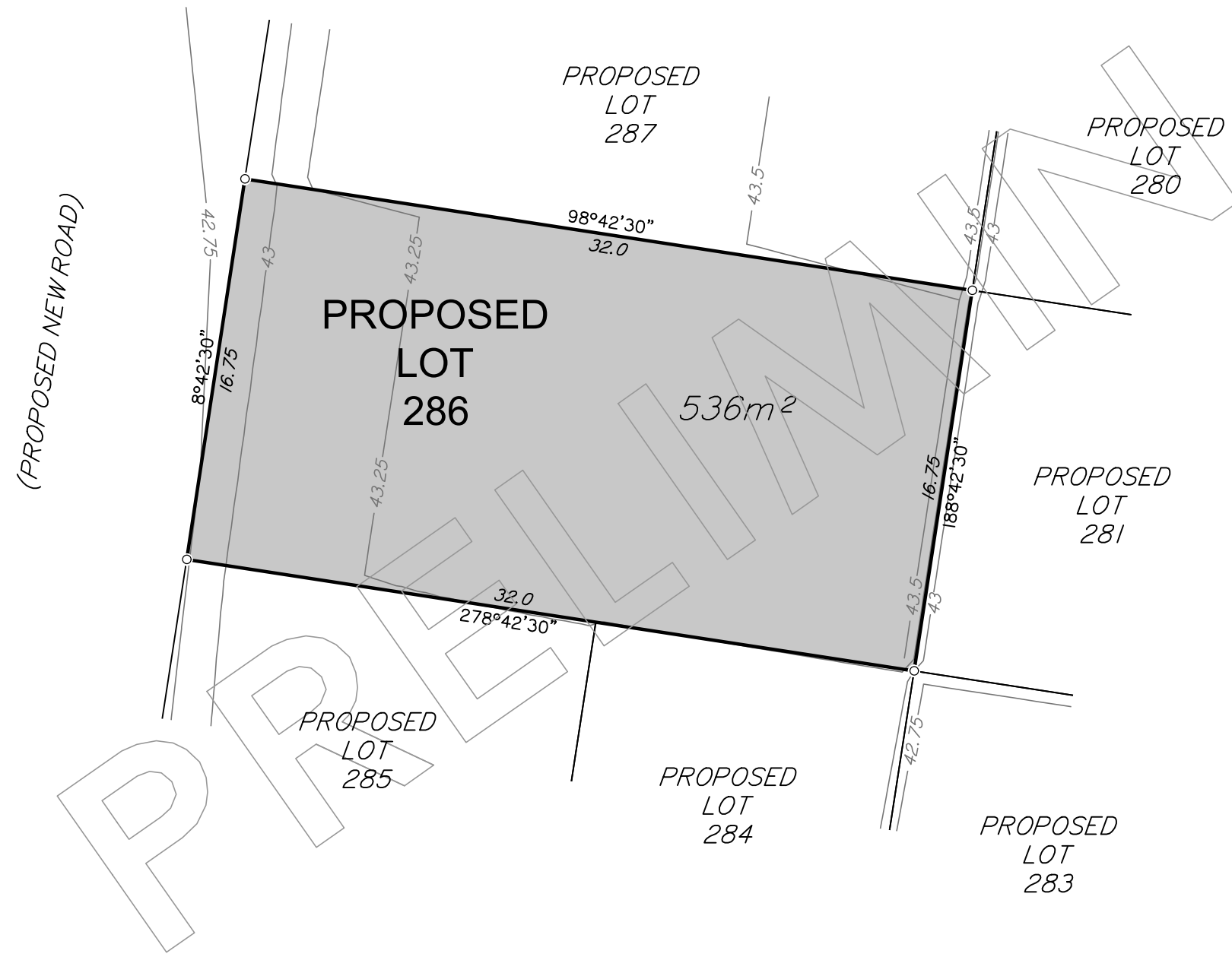
Fill Compaction Rate: 95% Standard Dry Density, carried out in  
 accordance with Australian Standard AS 3798 - 2007 and Ipswich City  
 Council Planning Scheme Policy 3 - General Works, Part 4 - Earthworks.

Project:  
**WATERLEA  
 STAGE 3C**

Client:  
**WATERLEA  
 NOMINEES CO  
 PTY LTD**

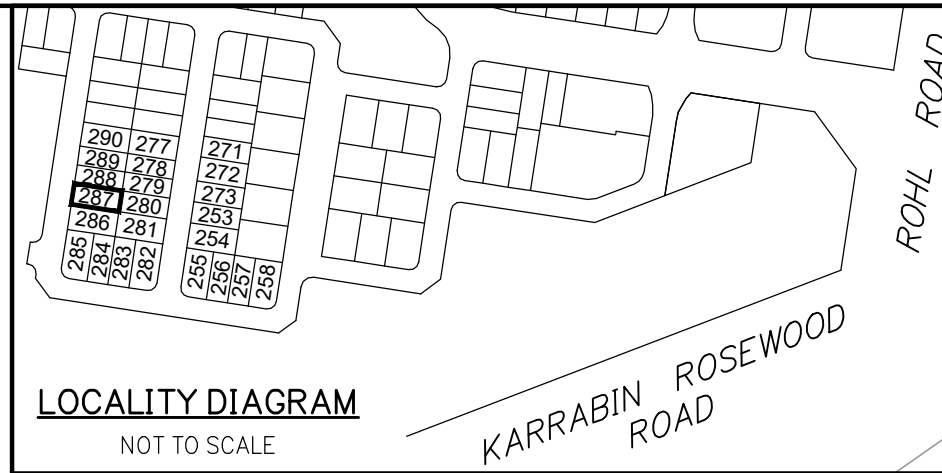


Western Corridor Office  
 Level 6, Springfield Tower  
 145 Sinnathamby Boulevard  
 Springfield Central QLD 4300  
 PO Box 4647  
 Springfield QLD 4300  
 t (07) 3470 8100  
 f (07) 3470 8101  
 e info@landpartners.com.au  
 www.landpartners.com.au



SCALE 1:250

DRAWN	KT	DATUM	AHD D
DATE	24/09/2018	LEVEL ORIGIN	PSM193875 RL46.405
CHECKED	AW	COMPUTER FILE	WC007157-03C-2-1
DATE	25/09/2018	SCALE (@ A3)	1:250
APPROVED	REM	PLAN NUMBER	WC007157-03C-021-1
DATE	26/09/2018		



### DISCLOSURE PLAN FOR PROPOSED LOT 287

This plan shows:  
 Details of Proposed Lot 287 on the Reconfiguration Plan  
 Plan 0715-0430-13 D007, Rev 04 by Tract Consultants.  
 A Minor Change to a Reconfiguration of a lot application, being  
 application number 3105/2016/MAMC/B to reconfigure Lot 805  
 on SP297497 and Lot 1 on SP179238 at Walloon is currently  
 before Ipswich City Council for approval subject to conditions.

This Disclosure Plan was prepared in accordance with the Land Sales  
 Act 1984 to enable the sale of proposed lots. This plan should not be  
 used for design purposes as the details shown on this plan may vary  
 from final site conditions. Waterlea Nominees Co Pty Ltd recommends  
 using As Constructed information for design purposes.

Existing surface details shown hereon were supplied  
 by Premise on 5th September 2018

Design surface contours based on AHD D  
 datum at an interval on 0.25m, shown as:  63.25

Where applicable, Easements are shown as:

Where applicable areas to be filled are shown as:

Where applicable areas to be cut are shown as: + + +

Maximum Fill Depth: 1.9 m

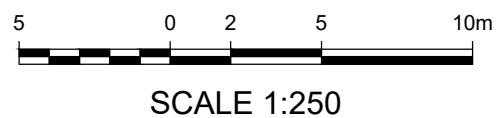
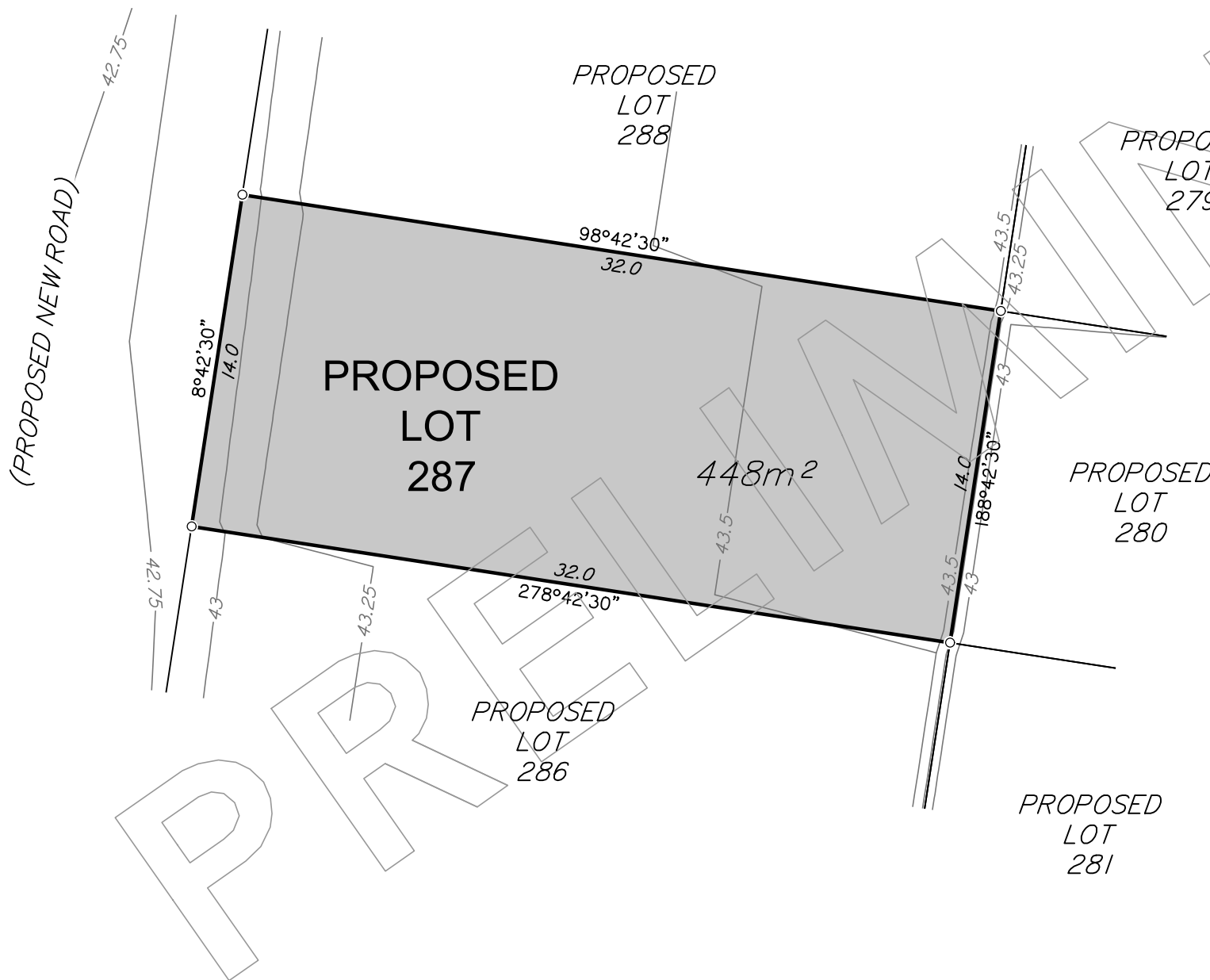
Fill Compaction Rate: 95% Standard Dry Density, carried out in  
 accordance with Australian Standard AS 3798 - 2007 and Ipswich City  
 Council Planning Scheme Policy 3 - General Works, Part 4 - Earthworks.

Project:  
**WATERLEA  
 STAGE 3C**

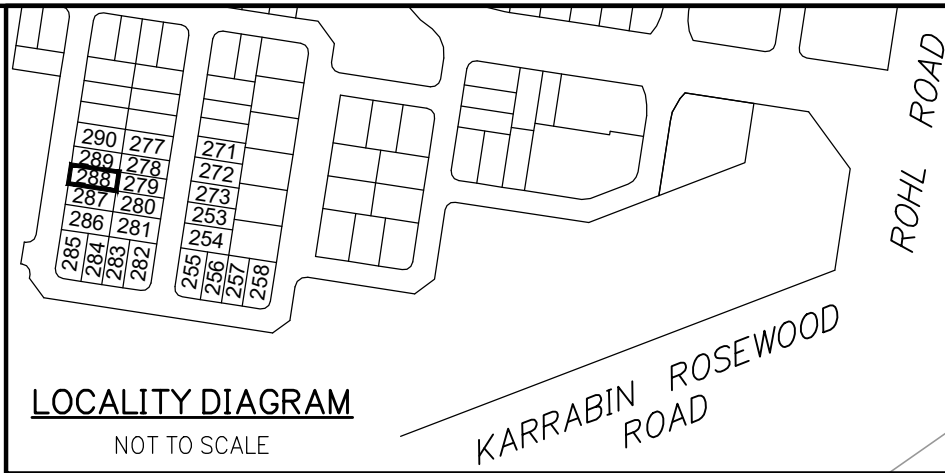
Client:  
**WATERLEA  
 NOMINEES CO  
 PTY LTD**



Western Corridor Office  
 Level 6, Springfield Tower  
 145 Sinnathamby Boulevard  
 Springfield Central QLD 4300  
 PO Box 4647  
 Springfield QLD 4300  
 t (07) 3470 8100  
 f (07) 3470 8101  
 e info@landpartners.com.au  
 www.landpartners.com.au



DRAWN	KT	DATUM	AHD D
DATE	24/09/2018	LEVEL ORIGIN	PSM193875 RL46.405
CHECKED	AW	COMPUTER FILE	WC007157-03C-2-1
DATE	25/09/2018	SCALE (@ A3)	1:250
APPROVED	REM	PLAN NUMBER	WC007157-03C-022-1
DATE	26/09/2018		



**DISCLOSURE PLAN FOR PROPOSED LOT 288**

This plan shows:  
 Details of Proposed Lot 288 on the Reconfiguration Plan  
 Plan 0715-0430-13 D007, Rev 04 by Tract Consultants.  
 A Minor Change to a Reconfiguration of a lot application, being  
 application number 3105/2016/MAMC/B to reconfigure Lot 805  
 on SP297497 and Lot 1 on SP179238 at Walloon is currently  
 before Ipswich City Council for approval subject to conditions.

This Disclosure Plan was prepared in accordance with the Land Sales  
 Act 1984 to enable the sale of proposed lots. This plan should not be  
 used for design purposes as the details shown on this plan may vary  
 from final site conditions. Waterlea Nominees Co Pty Ltd recommends  
 using As Constructed information for design purposes.

Existing surface details shown hereon were supplied  
 by Premise on 5th September 2018

- Design surface contours based on AHD D  
 datum at an interval on 0.25m, shown as: 63.25
- Where applicable, Easements are shown as:
- Where applicable areas to be filled are shown as:
- Where applicable areas to be cut are shown as:

Maximum Fill Depth: 1.8 m  
 Fill Compaction Rate: 95% Standard Dry Density, carried out in  
 accordance with Australian Standard AS 3798 – 2007 and Ipswich City  
 Council Planning Scheme Policy 3 – General Works, Part 4 – Earthworks.

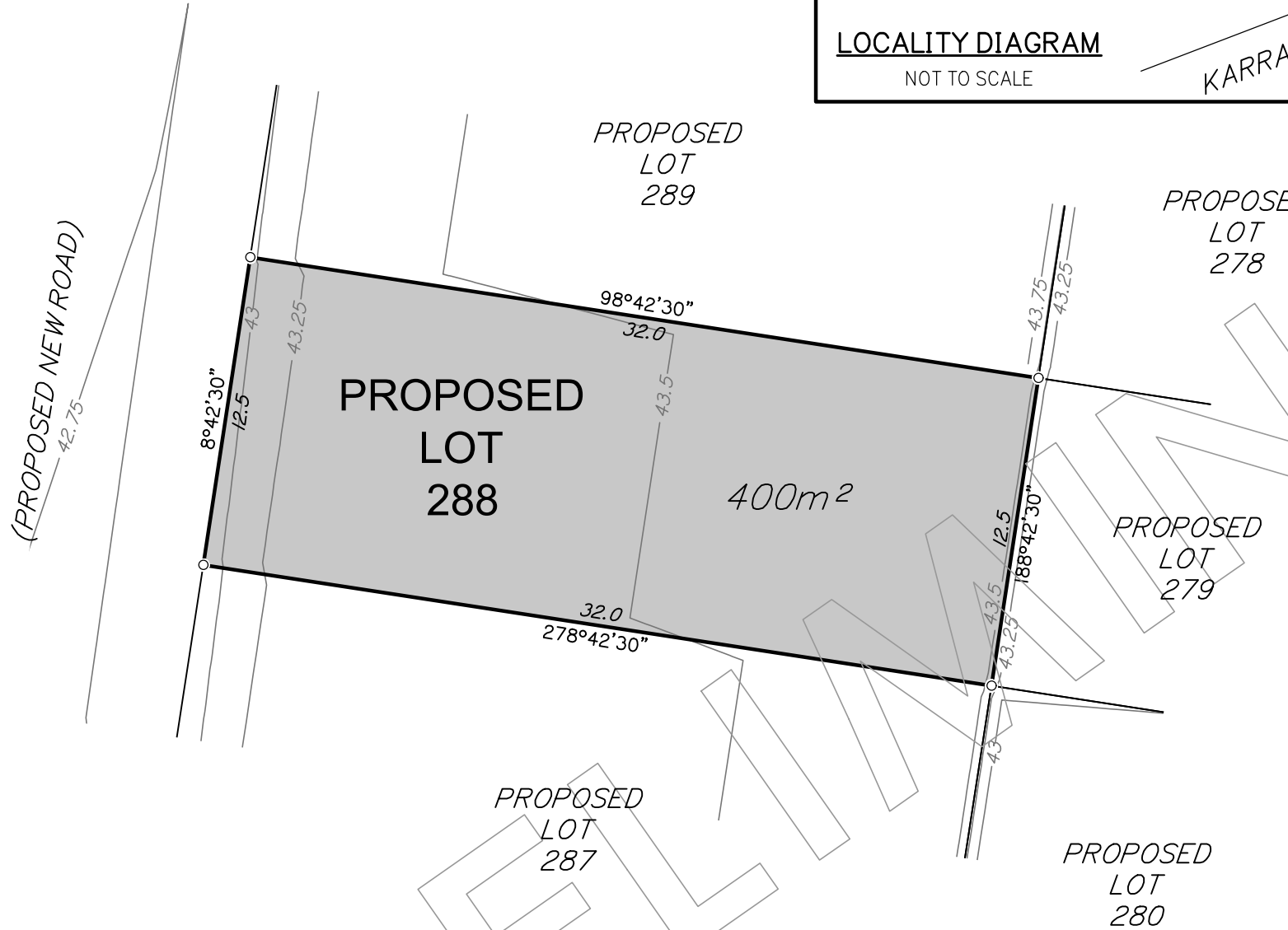
Project:	Client:
<b>WATERLEA STAGE 3C</b>	<b>WATERLEA NOMINEES CO PTY LTD</b>



Western Corridor Office  
 Level 6, Springfield Tower  
 145 Sinnathamby Boulevard  
 Springfield Central QLD 4300  
 PO Box 4647  
 Springfield QLD 4300

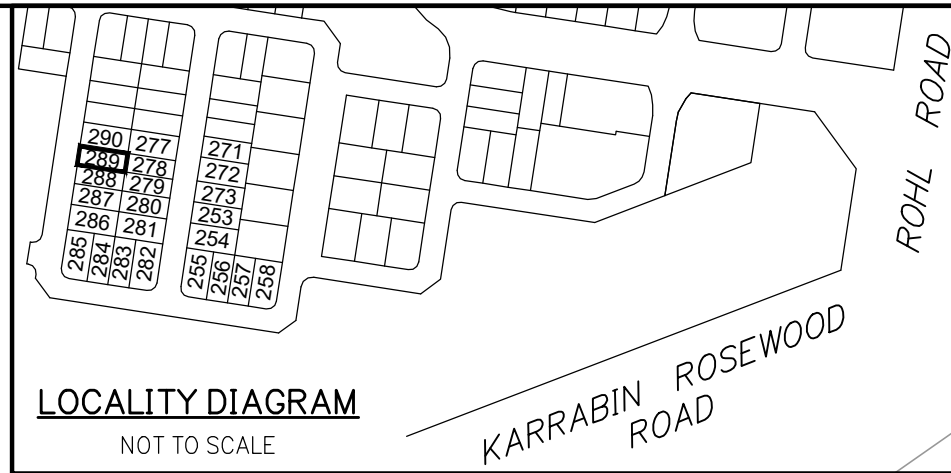
1 (07) 3470 8100  
 f (07) 3470 8101  
 e info@landpartners.com.au  
 w www.landpartners.com.au

DRAWN	KT	DATUM	AHD D
DATE	24/09/2018	LEVEL ORIGIN	PSM193875 RL46.405
CHECKED	AW	COMPUTER FILE	WC007157-03C-2-1
DATE	25/09/2018	SCALE (@ A3)	1:250
APPROVED	REM	PLAN NUMBER	<b>WC007157-03C-023-1</b>
DATE	26/09/2018		



SCALE 1:250

PRELIMINARY



### DISCLOSURE PLAN FOR PROPOSED LOT 289

This plan shows:  
 Details of Proposed Lot 289 on the Reconfiguration Plan  
 Plan 0715-0430-13 D007, Rev 04 by Tract Consultants.  
 A Minor Change to a Reconfiguration of a lot application, being  
 application number 3105/2016/MAMC/B to reconfigure Lot 805  
 on SP297497 and Lot 1 on SP179238 at Walloon is currently  
 before Ipswich City Council for approval subject to conditions.

This Disclosure Plan was prepared in accordance with the Land Sales  
 Act 1984 to enable the sale of proposed lots. This plan should not be  
 used for design purposes as the details shown on this plan may vary  
 from final site conditions. Waterlea Nominees Co Pty Ltd recommends  
 using As Constructed information for design purposes.

Existing surface details shown hereon were supplied  
 by Premise on 5th September 2018

Design surface contours based on AHD D  
 datum at an interval on 0.25m, shown as: 63.25

Where applicable, Easements are shown as:

Where applicable areas to be filled are shown as:

Where applicable areas to be cut are shown as:

Maximum Fill Depth: 1.9 m

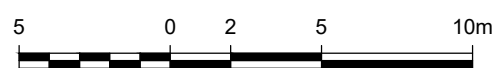
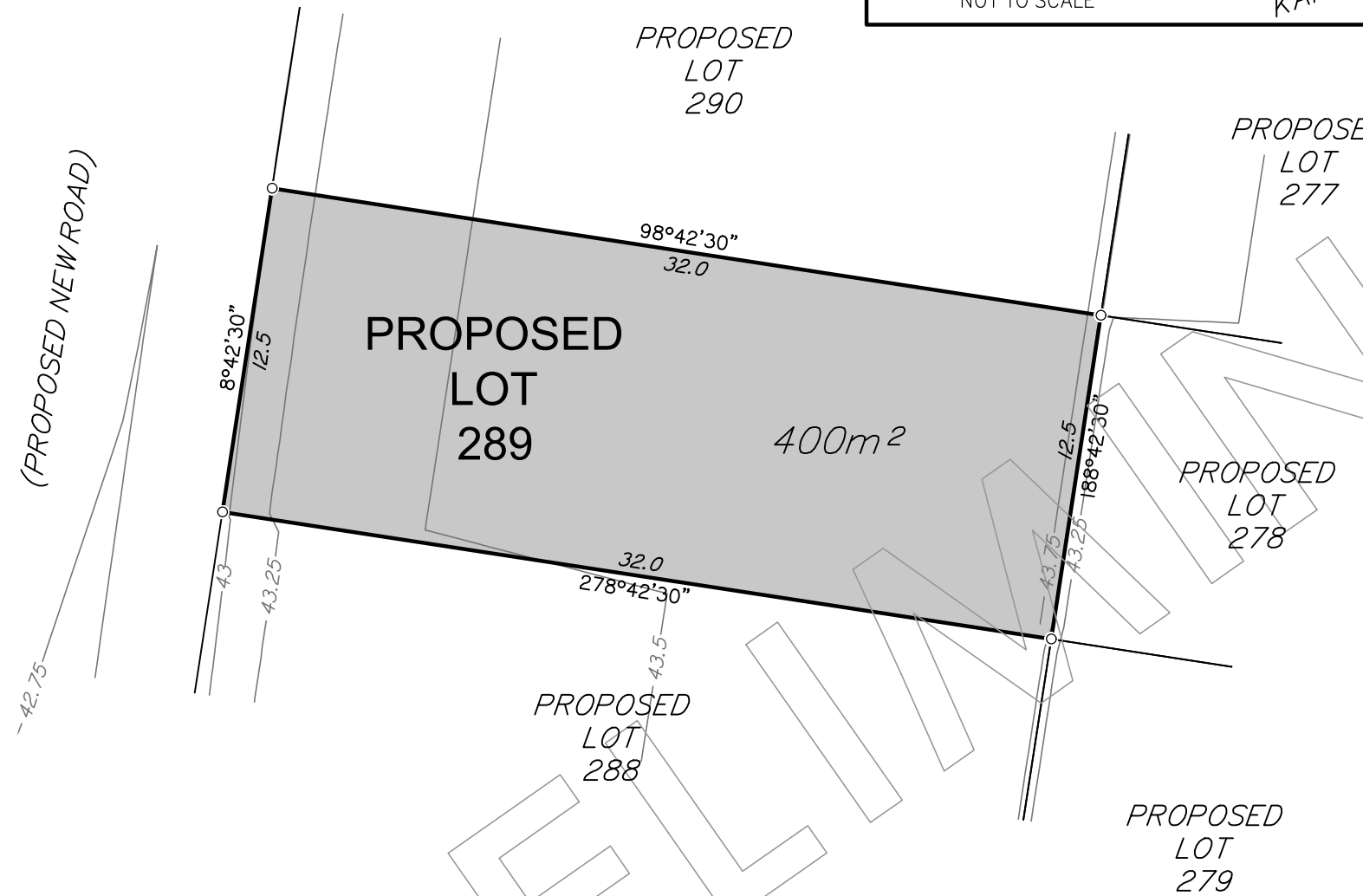
Fill Compaction Rate: 95% Standard Dry Density, carried out in  
 accordance with Australian Standard AS 3798 - 2007 and Ipswich City  
 Council Planning Scheme Policy 3 - General Works, Part 4 - Earthworks.

Project:  
**WATERLEA  
 STAGE 3C**

Client:  
**WATERLEA  
 NOMINEES CO  
 PTY LTD**

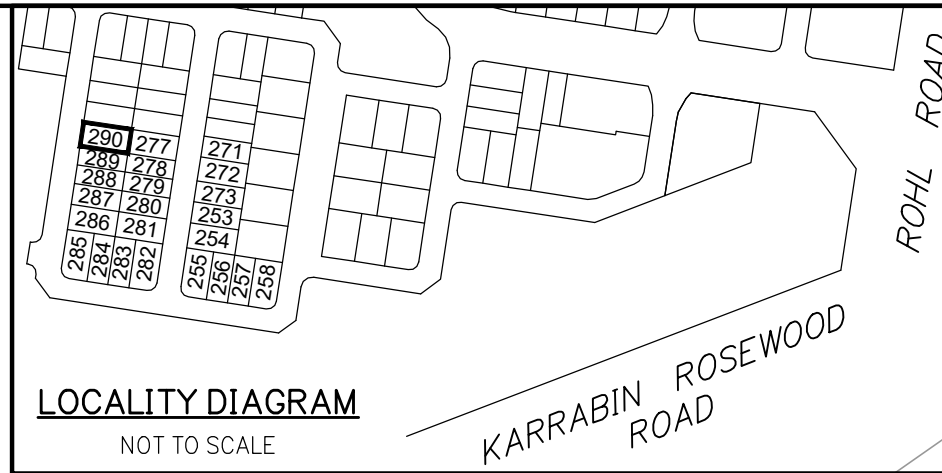
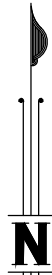


Western Corridor Office  
 Level 6, Springfield Tower  
 145 Sinnathamby Boulevard  
 Springfield Central QLD 4300  
 PO Box 4647  
 Springfield QLD 4300  
 t (07) 3470 8100  
 f (07) 3470 8101  
 e info@landpartners.com.au  
 w www.landpartners.com.au



SCALE 1:250

DRAWN	KT	DATUM	AHD D
DATE	24/09/2018	LEVEL ORIGIN	PSM193875 RL46.405
CHECKED	AW	COMPUTER FILE	WC007157-03C-2-1
DATE	25/09/2018	SCALE (@ A3)	1:250
APPROVED	REM	PLAN NUMBER	WC007157-03C-024-1
DATE	26/09/2018		



### DISCLOSURE PLAN FOR PROPOSED LOT 290

This plan shows:  
 Details of Proposed Lot 290 on the Reconfiguration Plan  
 Plan 0715-0430-13 D007, Rev 04 by Tract Consultants.  
 A Minor Change to a Reconfiguration of a lot application, being  
 application number 3105/2016/MAMC/B to reconfigure Lot 805  
 on SP297497 and Lot 1 on SP179238 at Walloon is currently  
 before Ipswich City Council for approval subject to conditions.

This Disclosure Plan was prepared in accordance with the Land Sales  
 Act 1984 to enable the sale of proposed lots. This plan should not be  
 used for design purposes as the details shown on this plan may vary  
 from final site conditions. Waterlea Nominees Co Pty Ltd recommends  
 using As Constructed information for design purposes.

Existing surface details shown hereon were supplied  
 by Premise on 5th September 2018

Design surface contours based on AHD D  
 datum at an interval on 0.25m, shown as:  63.25

Where applicable, Easements are shown as:

Where applicable areas to be filled are shown as:

Where applicable areas to be cut are shown as: + + +

Maximum Fill Depth: 1.9 m

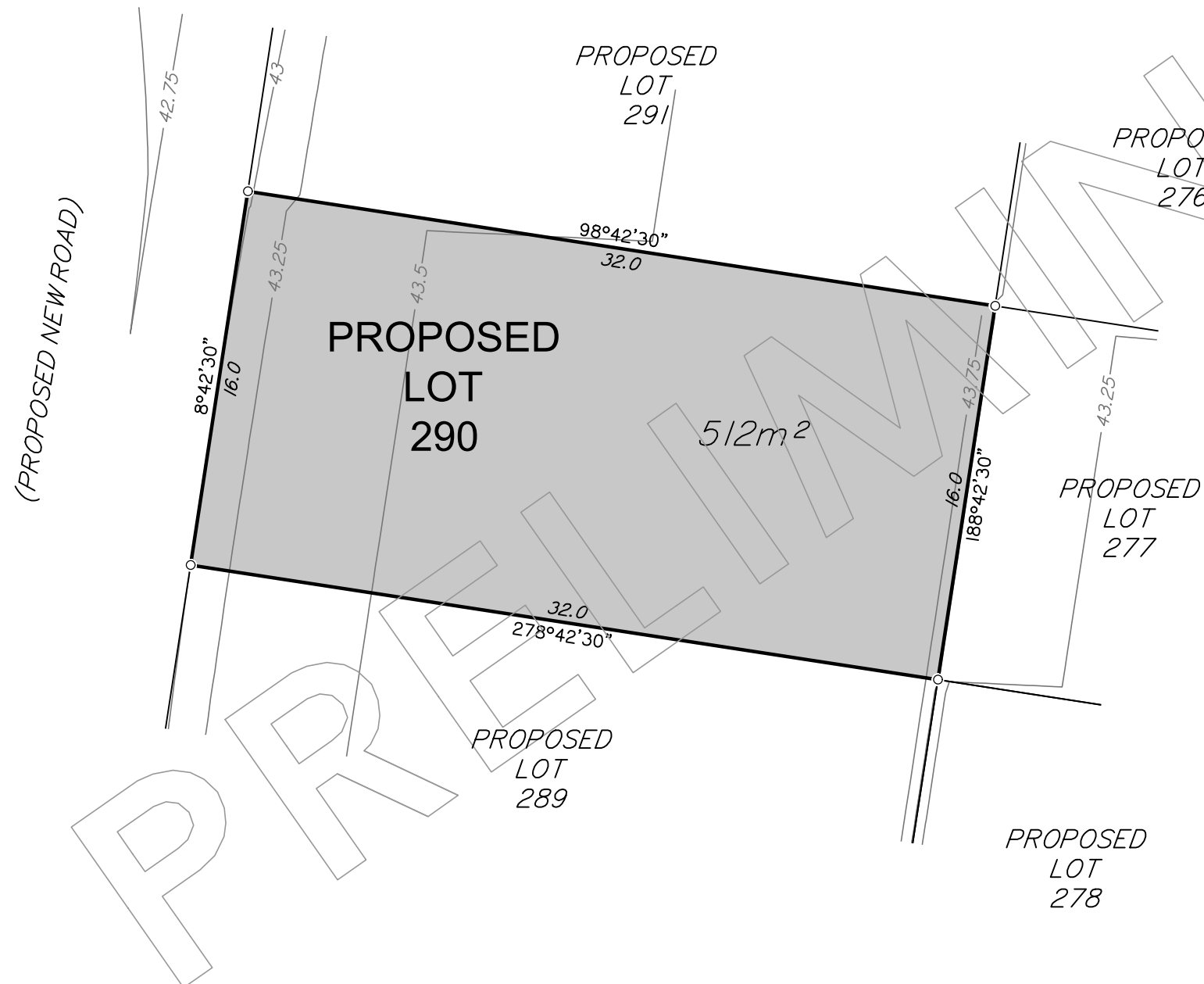
Fill Compaction Rate: 95% Standard Dry Density, carried out in  
 accordance with Australian Standard AS 3798 - 2007 and Ipswich City  
 Council Planning Scheme Policy 3 - General Works, Part 4 - Earthworks.

Project:  
**WATERLEA  
 STAGE 3C**

Client:  
**WATERLEA  
 NOMINEES CO  
 PTY LTD**



Western Corridor Office  
 Level 6, Springfield Tower  
 145 Sinnathamby Boulevard  
 Springfield Central QLD 4300  
 PO Box 4647  
 Springfield QLD 4300  
 t (07) 3470 8100  
 f (07) 3470 8101  
 e info@landpartners.com.au  
 www.landpartners.com.au



SCALE 1:250

DRAWN	KT	DATUM	AHD D
DATE	24/09/2018	LEVEL ORIGIN	PSM193875 RL46.405
CHECKED	AW	COMPUTER FILE	WC007157-03C-2-1
DATE	25/09/2018	SCALE (@ A3)	1:250
APPROVED	REM	PLAN NUMBER	<b>WC007157-03C-025-1</b>
DATE	26/09/2018		